


OPEN SPACES FOR THE  
**OUTDOOR ADVENTURER**

**KID-APPROVED**  
ACTIVITIES

**LOCAL FLAVOR:** A FOOD SCENE  
GARNERING NATIONAL ATTENTION

THE ANNUAL

# TRAVEL ISSUE

  
Wilmington  
and the  
Brandywine  
Valley  
History • Culture • Gardens


AN OFFICIAL PUBLICATION OF THE GREATER WILMINGTON CONVENTION AND VISITORS BUREAU

WANDER.  
WONDER.  
DISCOVER.

“THE **50**  
BEST PLACES  
TO TRAVEL  
IN 2021”

—TRAVEL + LEISURE



 [VISITWilmingtonDE.com](https://www.visitwilmingtonde.com)

2021/22





*“A Combination of Natural Beauty and Ingenuity”*

**COME SEE WHY TRIPADVISOR USERS GIVE HAGLEY 4.5 STARS!**

— TRIPADVISOR REVIEW 11/19



Smithsonian  
Affiliate

**HAGLEY MUSEUM AND LIBRARY**

WILMINGTON, DELAWARE

WWW.HAGLEY.ORG • (302) 658-2400



# Stay with us

when visiting the University of Delaware/Christiana area



TAX FREE SHOPPING



## Recently Renovated, Award-Winning Property

- Relax in a comfortable, spacious suite
- Start each day with a complimentary hot breakfast buffet
- Social evening receptions (Monday-Wednesday)
- Business center, exercise facility & pantry
- Member of IHG Rewards Program
- Christiana Mall, Restaurants & Entertainment nearby



**IHG**  
Rewards  
Club

270 Chapman Road • Newark, DE 19702 • Tel: 302.366.8097 • Fax: 302.366.8098  
I-95 N (Exit 3A); first light make right • I-95 S (Exit 3) towards Dover; first light make right

staybridge.com/wilmington-de



## Lodging, Meetings & Special Events

With 100 newly renovated guestrooms and over 3500 sq ft of meeting and banquet space, and just minutes away from the University of Delaware and the Christiana Mall area, we are the perfect location. Whether its social or corporate, Ramada Newark/Wilmington will make your event memorable with flexible options and an expert staff.

- Microwave & fridge in every guestroom
- Complimentary deluxe hot breakfast
- Business Center
- Fitness Center
- Coin-operated laundry facilities
- Seasonal Pool within our exterior garden area

260 Chapman Road • Newark, DE 19702 • Tel: 302.738.3400 • Fax: 302.738.3414  
I-95 N (Exit 3A); first light make right • I-95 S (Exit 3) towards Dover; first light make right

ramada.com

**WYNDHAM**  
REWARDS



Classic Farm to Table Italian cuisine, rated "best" by News Journal.



## Olive Grill & David's Bar

Newly renovated, the restaurant and bar offer a modern setting unlike anything in the state. Casual spaces with large TVs, friendly staff, and amazing food.

Open for dinner daily at 5pm, and available for takeout or catering.

Tel: 302.260.8650  
olivegrill.online

**DAVID'S**



## Best Value in the Heart of the Brandywine Valley

- Complimentary Continental Breakfast featuring a fresh waffle bar
- Complimentary Wi-Fi, Business Center & credit card operated laundry facility
- Explore some of our nation's most historic sites, including world-class gardens & museums
- Take a stroll through one-of-a-kind shops & boutiques or visit one of our largest malls located just next door

5209 Concord Pike • Wilmington, DE 19803 • Tel: 302.478.0300 • Fax: 302.478.2401  
I-95 North to Exit 8 • I-95 South to Exit 11 to Naamans Road

daysinn-wilmington.com

**WYNDHAM**  
REWARDS



# COURTYARD<sup>®</sup>

BY MARRIOTT

EVERYTHING  
YOU NEED TO  
MOVE FORWARD



UNWIND

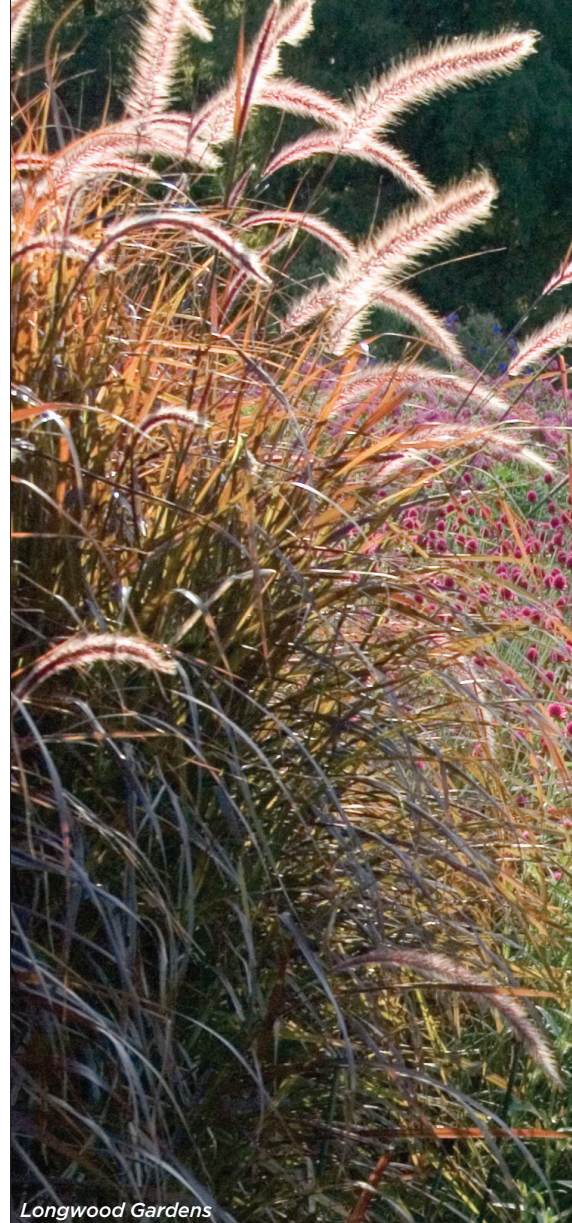
Spaces to relax, recharge, and reset.



UNIVERSITY OF  
DELAWARE

302.737.0900  
marriott.com/ilgud

400 David Hollowell Drive • Newark, DE 19716



Longwood Gardens

  
Greater  
Wilmington  
Convention & Visitors Bureau

Marketing New Castle County & the Brandywine Valley

## BOARD OF DIRECTORS

Bill Sullivan, CHTP ..... Chairman  
Celeste K. Mozeik, Ed.D. .... First Vice Chairman  
Halsey Spruance ..... Second Vice Chairman  
John Sarro ..... Board Secretary  
Brad Wenger ..... Board Treasurer  
Sarah Willoughby, CTP, CTIS ..... Executive Director  
Basil Battaglia, Christopher Bell, The Honorable Gerald Brady,  
Deborah Buckson, Carol B. Cadou, Italo Carrieri-Russo, Steven  
R. Chambliss, India Sarai Colon, Jerry DuPhily, Jennifer Oberle  
Howard, Laura Jury, Liz Keller, Francis A. Kwansa, Ph.D.,  
The Honorable Elizabeth Lockman, Vicky Pettinaro Martelli,  
Megan McGlinchey, Canon Patel, Catherine L. Rossi, Albert  
Shields, Bill Silva, David Sophrin

## STAFF

Jessica Bittmann, CMP ..... Director of Sales  
Jennifer Boes ..... Director of Marketing  
Communications & Media  
Scott B. Ciancio ..... Director of Marketing  
Jessica Horstmann ..... Marketing & Social Media Specialist

COVER: Brandywine Creek, First State National Historic Park.  
Photograph by Leslie Kipp, KippDigital





**“ TOP CITIES  
FOR QUICK SUMMER  
GETAWAYS ”**

—CNBC, AUGUST 2020

# Contents



LESLIE KIPP

Brandywine River



Hagley Museum & Library

- 5** Welcome
- 7** How to Use This Guide
- 8** The Outdoor Adventurer
- 11** Back Roads and Byways
- 14** Family Fun
- 16** Grand Estates,  
Glorious Gardens
- 18** Local Flavor
- 24** See You Soon

*Wilmington and the Brandywine Valley Visitors Guide* is published once a year by Today Media Custom Communications. Annual circulation: 150,000. Information in this publication is as accurate as possible at press time but is subject to change. Please call ahead to verify information before traveling. Advertisements and listings are presented as a service to readers and do not constitute an endorsement of any business by the GWCVB or Today Media, which accept no responsibility for the content of advertisements. Copyright GWCVB, 2021. Please refer any questions regarding advertising to: Today Media Custom Communications, 1014 W. 36th St., Baltimore, MD 21211, 410-828-0120.

The Greater Wilmington Convention and Visitors Bureau is a nonprofit corporation founded in 1978, chartered by the Governor of Delaware, the New Castle County Executive and the Mayor of Wilmington. Its mission is to serve as the community's customer-focused destination marketing organization, generating economic growth through leisure travel and meetings development by aggressively marketing attractions, facilities, amenities and services for visitors.

## Be Social...

**CONNECT WITH US  
#VISITWILM**



@shannonritter\_photography  
Brandywine Park

GreaterWilmingtonCVB

@VisitWilmington

VisitWilmingtonDE

VisitWilmington

VisitWilmingtonDE



# Stay With Us

## When You Visit The Brandywine Valley



Homewood Suites by Hilton Wilmington-Brandywine Valley  
350 Rocky Run Pkwy., Wilmington, DE 19803  
From I-95 (Exit 8) Rt. 202 N 3.5 mi. | 302-479-2000

[www.wilmington.homewoodsuites.com](http://www.wilmington.homewoodsuites.com)

- Fully renovated spacious suites with separate bedroom and full kitchen
- Meeting spaces to accommodate small to mid-size groups
- Daily complimentary hot breakfast buffet and weekday evening social
- Exercise facility, Suite Shop and outdoor salt-water swimming pool
- Close to all Brandywine Valley attractions and many businesses



AN IHG® HOTEL

Holiday Inn Express & Suites Wilmington-Newark  
1201 Christiana Rd., Wilmington-Newark, DE 19713  
I-95 (Exit 3) & Rt. 273 | 302-737-2700

[www.hiexpress.com/newarkde](http://www.hiexpress.com/newarkde)

- Newly renovated
- Award Winning Hotel 5 Consecutive years
- Complimentary expanded continental breakfast including hot selections
- Business center, indoor pool and Jacuzzi
- Exercise facility and Suite Shoppe
- Restaurants & entertainment nearby



Comfort Inn & Suites Newark-Wilmington  
3 Concord Ln., Wilmington-Newark, DE 19713  
I-95 (Exit 3) & Rt. 273 | 302-737-3900

[www.choicehotels.com/de052](http://www.choicehotels.com/de052)

- Newly renovated!
- Express Start Breakfast, Complimentary continental breakfast with hot items
- Close to all Brandywine attractions
- Minutes to the area's largest mall for tax-free shopping
- Restaurants & entertainment nearby



## TWO STONES PUB

**Located just outside of both Holiday Inn Express and the Comfort Inn!**

Enjoy great food and drinks. A bright gastropub featuring chef-driven menus that change daily and amazing craft brews. Lunch-Dinner-Sunday Brunch-Open Late.

1203 Christiana Rd., Newark, DE 19713  
I-95 (Exit 3) & Rt. 273 | 302-294-1890

[www.twostonespub.com/newark](http://www.twostonespub.com/newark)

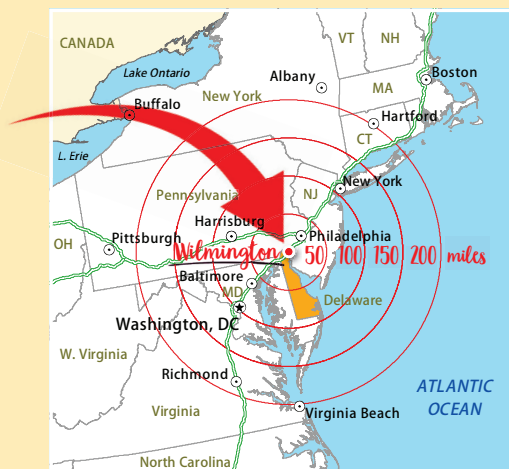






Beaver Valley: Ramsey's Farm

## We invite you to discover Greater Wilmington and the Brandywine Valley.



Located between Washington D.C. and New York City, minutes off Interstate 95, we are close to home yet worlds away. Offering equal parts adventure and relaxation, we are a premier destination for weekend getaways.

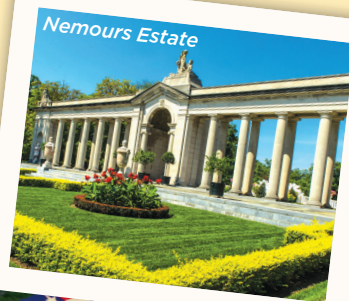
If you are looking to unplug, recharge and connect with the natural world, we've got acres and acres of uncrowded, open green spaces to explore.

Our region is also home to some of the finest gardens and estates in North America, the legacy of one of the country's oldest and most influential families: the du Ponts. Our history reads like a novel that cannot be

put down, with deep influences from early European settlers, the African American freedom movement and the Industrial Revolution.

Wilmington's culture, arts and music scene is unbelievably diverse for a city of just over 69,500 people. For foodies, we offer a thriving food, beer and wine landscape that can hold its own against any major metropolitan area. And did we mention we are the home city of #46, Joe Biden?

Now let's start planning!



LESUE KIPP







## ONE SPECTACULAR EXPERIENCE

world-renowned garden | historic mansion tours  
galleries & exhibitions | 25 miles of paths and trails



800.448.3883 | [winterthur.org](http://winterthur.org)

Winterthur is nestled in Delaware's beautiful Brandywine Valley on Route 52, just minutes from I-95, Exit 7.



# HOW TO USE THIS GUIDE



Mt. Cuba Center

## *The way we travel, and plan for travel, has changed.*

This guide will help you wander, wonder and discover safely.

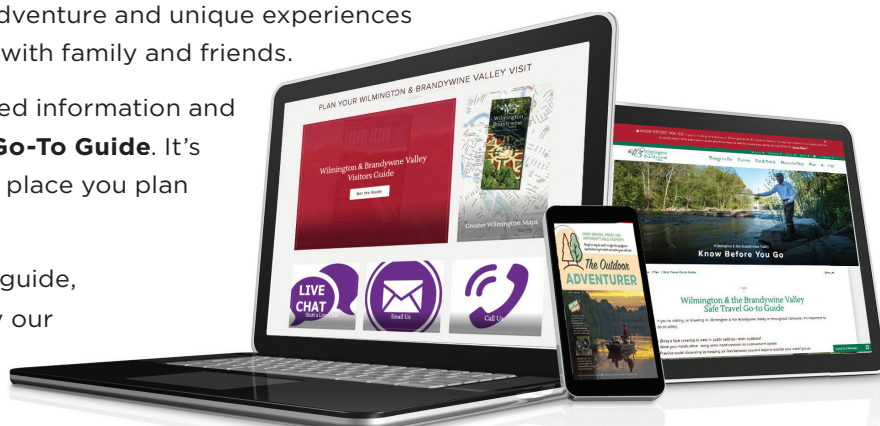
You'll find great options for outdoor adventure and unique experiences where you can focus on reconnecting with family and friends.

For the latest updates on COVID-related information and travel tips, check out our **Safe Travel Go-To Guide**. It's also a good idea to connect with each place you plan to visit in advance.

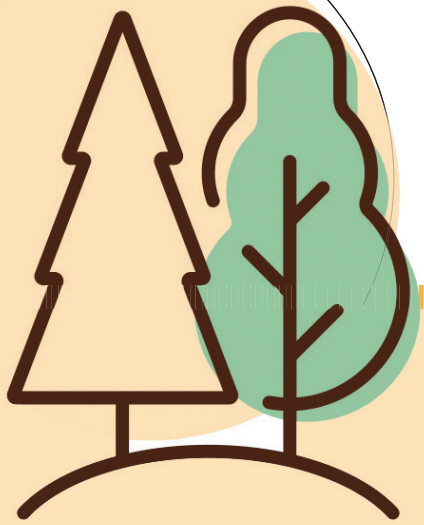
If you can't find what you need in this guide, go to **VisitWilmingtonDE.com** and try our



**LIVE CHAT** for tailored assistance with your planning.







**OPEN SPACES. FRESH AIR.  
UNFORGETTABLE SCENERY.**

*Though we may be small, we offer lots of different opportunities to get outside and explore your wild side.*

# The Outdoor ADVENTURER

Lums Pond State Park

**DID YOU  
KNOW?**

WILMINGTON AND THE  
BRANDYWINE VALLEY  
ARE HOME TO THE  
**TRI-STATE MARKER**, THE  
NORTHERNMOST POINT OF  
THE **MASON-DIXON LINE**.  
FIND IT, AND YOU CAN BE IN  
DELAWARE, PENNSYLVANIA



AND MARYLAND . . . ALL  
AT ONE TIME. (HINT: IT IS  
LOCATED IN ONE OF THE  
PARKS WE MENTION IN THIS  
SECTION OF THE GUIDE.)







Brandywine Park



Beaver Valley, First State National Historic Park



Brandywine Creek State Park

**W**e bet you thought Delaware was flat. Well, you would be correct . . . when it comes to most of the state. Northern Delaware is different. Located where the foothills of the Appalachian Mountains begin, our region is home to lots of varied terrains, from gently rolling hills, steep slopes and rocky plateaus to gorgeous landscapes with primarily flat, level stretches of trail.

So, whether you prefer to casually meander the path less traveled or you seek something that will really get your heart pumping, you will find it here.

And the scenery will not disappoint. Our landscape is defined by age-old stone fences, mature forests, covered bridges and sparkling waterways. There are also lots of opportunities to spot wildlife, no matter what pursuit you choose. So, what are you waiting for? Hold on to your hats! We are going on an adventure. . . .



### Hike . . .

Hike among 190-year-old trees and Chateau Country's signature stone walls at **BRANDYWINE CREEK STATE PARK**. Enjoy stunning water views at **WHITE CLAY CREEK STATE PARK** from the #Instaworthy bridges that crisscross the creek. Be sure to check out the historic ruins and forges found here as well. At **ALAPOCAS RUN STATE PARK**, see one of Delaware's few waterfalls.



### Bike . . .

Cycle from one historic town (Delaware City, Delaware) to another (Chesapeake City, Maryland) along the Chesapeake and Delaware Canal via the **MICHAEL N. CASTLE TRAIL**. Stop to view cargo ships passing by on their way to and from the Atlantic Ocean. Pedal along the **JACK A. MARKELL TRAIL** through

lovely urban wetlands from the vibrant **WILMINGTON RIVERFRONT** to **HISTORIC NEW CASTLE**. Looking for a longer route? The **NORTHERN DELAWARE GREENWAY TRAIL** links two state parks and the City of Wilmington through a series of trails that pass through some of the most beautiful landscapes in our state.



### Paddle . . .

Peacefully paddle (or float) down the meandering Brandywine River . . . with some small rapids to shake things up along the way. **WILDERNESS CANOE TRIPS** offers canoe, kayak and tube trips with transport. Explore Delaware's largest freshwater pond, **LUMS POND STATE PARK**, for kayaking, pedal boating and row boating — all available for rent.



### Cast a Line . . .

#### BRANDYWINE

**PARK**, within the city limits of Wilmington, offers some of the best fly fishing in the state in the shallow rapids of Brandywine Creek. For those just learning, **BELLEVUE STATE PARK** hosts a three-hour "Intro to Fishing" that teaches the basics.



### Get Vertical . . .

#### Have a zipline

adventure at **GO APE!** Navigate through the treetops and cross the water using Double Stirrups, Zigzag Trapeze, Flying Carpet, Canyon Crossing, two Tarzan swings and FIVE zip lines. Learn to rock climb on Delaware's only **NATURAL CLIMBING WALL** in Alapocas Run State Park.

## 70 Years of State Park Fun

2021 marks the 70th anniversary of Delaware State Parks! Celebrate with a visit. Be sure to check out the unique adventures and programs in each of Greater Wilmington's parks, from owl prowls and treasure hunting to hayrides and concerts:

- 📍 Alapocas Run
- 📍 Auburn Valley
- 📍 Brandywine Creek
- 📍 Bellevue
- 📍 First State Heritage Park
- 📍 Fort Delaware
- 📍 Fort DuPont
- 📍 Fox Point
- 📍 Lums Pond
- 📍 White Clay Creek
- 📍 Wilmington State Parks



# Plan Your Visit to Nemours Estate

## OPENING SPRING 2021



- 200 acres of spectacular gardens and grounds
- stunning historic mansion
- vintage cars
- events
- live music
- family friendly
- learning programs
- tours

@nemoursestate



YouTube



Nemours® Estate



*The election of Joe Biden to the U.S. presidency... seems like a good time to bring this jewel to the nation's attention.*

*"Bringing the Brandywine Valley Into the Spotlight" —AAA, November 2020*

Red Clay Valley Scenic Byway

# Back Roads and Byways

*There is nothing more liberating than taking to the highway for a spur-of-the-moment driving adventure in northern Delaware. With miles and miles of winding country roads to explore, you'll take in spectacular views all along the way.*

**T**ake a coastal route to see some of the most pristine shoreline in the Mid-Atlantic while passing through working waterfront towns. Or, drive past stately mansions surrounded by acres of farmland deep in the heart of the Brandywine Valley. If you are a fan of American history, use your car as a time machine connecting you to historically significant sites, small towns and museums.

**So, let's go!** The open road beckons. Chart your own course or choose to explore one of these scenic byways that have already been mapped out for you:



## **BRANDYWINE VALLEY NATIONAL SCENIC BYWAY**

Start at the historic **HOTEL DU PONT** and head west on Route 52. Soon, you will find yourself in the rolling hills of **Chateau Country**. There are many lovely sights to take in along the way, including the villages of **Greenville**, **Centreville** and **Montchanin**; the du Pont estates and gardens; and local favorite restaurants.



## **RED CLAY VALLEY SCENIC BYWAY**

Twenty-eight different back roads will lead you through the gorgeous and largely undiscovered **Red Clay Valley Creek** and its watershed. Your journey begins on Route 82 in the tiny town of Yorklyn. Along the route are **Coverdale Farm Preserve**; the **Auburn Valley State Park and estate**; two covered bridges; and the **Ashland Nature Center**. Make plans to take a detour to **Woodside Farm Creamery** for some farm-fresh, handcrafted ice cream.





# Delaware

HISTORICAL SOCIETY



When It's Peach Picking Time  
(I'll Be There, I'll Be There)

Words by  
ALFRED T. KENT

Moderato.  
Piano



[dehistory.org](http://dehistory.org) | 505 N. Market Street, Wilmington, DE 19801 | 302-655-7161

Delaware History Museum | Mitchell Center For African American Heritage

Old Town Hall | Research Library | Willingtown Square

Natural Historic Landmark Read House & Gardens | 42 The Strand, New Castle





Tubman-Garrett Statue: "Unwavering Courage in the Pursuit of Freedom"



Wooddale Covered Bridge

NEW CASTLE COUNTY, DELAWARE IS HOME TO **THREE COVERED BRIDGES**, ALL WITHIN A 20-MINUTE DRIVE OF ONE ANOTHER. TAKE A TOUR OF THE BRIDGES WHILE TAKING IN OUR PICTURESQUE COUNTRYSIDE.



### HARRIET TUBMAN UNDERGROUND RAILROAD BYWAY

Delaware was the last slave state on the way to freedom for those using the **Underground Railroad**. This route follows the path that Harriet Tubman took through Delaware to rescue approximately 70 enslaved people. The northern Delaware portion of the byway passes through Middletown, Odessa and Wilmington. Points of interest include **Tubman-Garrett Riverfront Park**, the **Delaware History Museum**, the **New Castle Courthouse Museum**, and the **1772 Corbit-Sharp House**.



### DELAWARE BAYSHORE NATIONAL SCENIC BYWAY

Fifty miles of Delaware's Route 9 make up this route that parallels the Delaware River. You'll drive through and past the largest preserved coastal marshland on the East Coast, while also seeing some impressive **bird migration** in the spring and fall. Route 9 also traverses the charming colonial town of historic **New Castle**.



Historic New Castle: William Penn Statue

## Step Back in Time

*Time travel is possible! Just pay a visit to these authentic small towns:*



New Castle Courthouse Museum



Historic New Castle

### HISTORIC NEW CASTLE

Stroll the cobble streets of this riverfront town where William Penn first set foot in the New World. Take a walking tour to learn more about its storied past and enjoy a hearty meal at **Jessop's Tavern**.

### ODESSA AND MIDDLETOWN

Known as Cantwell Bridge until 1855, Odessa was one of the most important stops on the Underground Railroad. Take a guided tour of the **Historic Houses of Odessa** and enjoy a meal by the fire at **Cantwell's Tavern**.

**MIDDLETOWN'S HISTORIC DISTRICT** features an appealing mix of stately Victorian and Federal-style homes. It is also one of the fastest-growing communities in the state, with lots of individually owned shops, major brand stores and restaurants to check out.





“EXPLORE THESE  
8 DESTINATIONS  
WITH YOUR FAMILY”

(#7: WILMINGTON,  
DELAWARE)

—ESSENCE, JUNE 2020



MOONLOOP PHOTOGRAPHY



NEED MORE TIPS  
ON KID-APPROVED  
ACTIVITIES? USE



THE LIVE CHAT AT  
[VisitWilmingtonDE.com](https://www.visitwilmingtonde.com)  
TO GET ADVICE FROM  
ONE OF OUR HELPFUL  
STAFF MEMBERS.

Whether you have kids or are just a kid at heart, you'll have a blast in Wilmington and the Brandywine Valley! Get out and get active with a hike or bike ride on one of our flat, family-friendly trails. Enjoy kid-focused entertainment, hands-on outdoor adventures as well as museums and other attractions just for the wee ones. Most of our gardens, estates and exhibits also feature kid-centric offerings, activities and special events.



BRAD GLAZIER

Head to the **WILMINGTON RIVERFRONT** for a round of **MINI-GOLF** (open late spring to early fall) or a **BLUE ROCKS** game in Frawley Stadium.

Carolina League champions in 2020, the Blue Rocks became a feeder team for the Washington Nationals in 2021. Kids 14 years and older can channel their inner warrior and try their hand at axe throwing at **CONSTITUTION YARDS**. Adult supervision is required for those 17 years and younger. Also not to be missed is the **DELAWARE CHILDREN'S MUSEUM**. Tots to teens will have fun honing their math, science and technology skills through its hands-on exhibits.



JOHN CASPAR

Tour (or set sail on) the **KALMAR NYCKEL**, a full-scale replica of the Swedish flagship from the 1638 expedition that founded the first permanent European settlement in the Delaware Valley. The kids will love

hauling lines, setting sails, and hearing tales from the crew. Check the ship's calendar for dates/locations and sailing dates.

**THE DUPONT ENVIRONMENTAL EDUCATION CENTER** overlooks the Russell W. Peterson Urban Wildlife Refuge. Inside are interactive exhibits and viewing tanks showcasing local wildlife. Outside are three stories of observation decks offering sweeping views of the Christina River. A boardwalk loop runs through the marsh. There's also a roster of year-round hands-on educational experiences.



**NOTE:** Be sure to check the most current COVID-related information of each attraction before you go, as access may be limited due to safety precautions.





Wilmington & Western Railroad

LESLIE KIPP

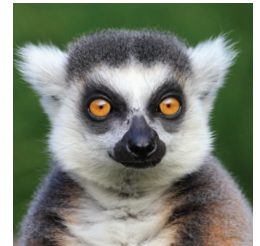


Riverwalk Mini Golf

MOONLOOP PHOTOGRAPHY



IN 2020, **THE BRANDYWINE ZOO** INTRODUCED A NEW MADAGASCAR EXHIBIT. ITS RESIDENTS INCLUDE A DELIGHTFULLY BODACIOUS



COMMUNITY OF ENDANGERED LEMURS. THEY'D LOVE IT IF YOU CAME BY TO SAY HI!



Constitution Yards Beer Garden

MOONLOOP PHOTOGRAPHY

It's "All Aboard!" on the **WILMINGTON AND WESTERN RAILROAD**. Take the kids for a ride on a vintage train through the scenic Red Clay Valley. Double the fun with a themed excursion, held on special days throughout the year. Fan favorites include the Easter Bunny Express, the Fireworks Express, Civil War Skirmish Weekend, the Princess Express, the Superhero Express, the Halloween Express, and the Santa Claus Express. Check the railroad's calendar for event dates.



MOONLOOP PHOTOGRAPHY

Travel by ferry to **FORT DELAWARE STATE PARK** and transport the family back to the days of the Civil War. Costumed interpreters will show you what a day in the life was like at this authentic Union fortress, including true

stories of great escapes. A fan favorite: the firing of the very impressive Columbiad cannon. Get ready for a big boom! Note: the fort is open to visitors April 24 through October 1.

At **ASHLAND NATURE CENTER**, kids can investigate along the wood and meadow trails that line the Red Clay Creek, where they can look for fish zipping around the shallow water and crayfish hiding under rocks. One trail leads to an old mill dam and railroad bridge. A seasonal butterfly house lets kids get up close and personal with caterpillars and butterflies.



## FAMILY-FRIENDLY DINING

*Make dining with the kids a breeze at these eateries that cater to families with children:*

**BIG FISH GRILL ON THE RIVERFRONT** — Adults will delight in the fresh seafood. The kids' menu (pasta, fried shrimp, chicken tenders) ensures everyone will be happy. And drawing on the table is welcomed! Crayons supplied...

**2 FAT GUYS** — Who doesn't love a great burger? Kids' meals come with a drink, choice of a side, and ice cream or an Oreo cookie for dessert.

**PIZZERIA BARDEA** — If the fam loves wood-fired pizza, this is the way to go. Picky eaters can choose their own toppings. And try the upside-down pizza. Kids looove it!!



**ROSENFELD'S DELICATESSEN** — Treat your kids — and your belly — to a traditional Jewish deli experience. They'll love the chicken soup. Pro tip: half a sandwich is more than enough for the little ones (and most big ones too).





# GRAND ESTATES, GLORIOUS GARDENS

The name du Pont is virtually synonymous with Delaware. In 1802, E.I. du Pont de Nemours, the son of a wealthy French immigrant, founded a gunpowder factory on the banks of the Brandywine River. The family became wealthier and more successful with every succeeding generation, with the DuPont company ultimately becoming a worldwide leader in science and technology.

But the legacy of the du Pont family goes far beyond industry. Thanks to the du Ponts' contributions to the arts, culture and horticulture over the past two centuries, the Greater Wilmington and Brandywine Valley region is world-renowned for its gardens and mansions. All of these treasures are former du Pont estates or have a direct connection to this illustrious family whose impact on Delaware and the world is still felt today.





**HENRY FRANCIS DU PONT, OF WINTERTHUR FAME, WAS CHARGED BY FIRST LADY JACKIE KENNEDY TO CHAIR HER COMMITTEE TO REFURNISH THE WHITE HOUSE. ON MAY 8, 1961, SHE CAME TO THE MUSEUM FOR LUNCH, A TOUR AND TO FORMALLY EXTEND AN INVITATION TO DU PONT TO CONCEIVE "CAMELOT."**



**Hagley Museum and Library** is where the du Pont story begins. Located on 235 acres along Delaware's most scenic river, it includes the ancestral home, workers' quarters, gardens, and the restored gunpowder mills. In fall 2021, Hagley will unveil "Nation of Inventors," a permanent exhibition showcasing the second-largest collection of patent models in the world behind the Smithsonian.



**Winterthur Museum, Garden and Library** is home to one of the most important collections of Americana in the U.S. It is the former home of renowned antiques collector and horticulturist Henry Francis du Pont (1880-

1969). Among the many highlights of this 1,000-acre property are its stunning Azalea Woods, the reflecting pool (formerly the family swimming pool), and its Campbell Collection of soup tureens. Kids will love the Enchanted Garden.



**Nemours Estate** is the former home of industrialist and philanthropist Alfred I. du Pont (1864-1935). This 222-acre estate, modeled after Versailles, is replete with magnificent fountains, gilded sculptures and fabulous art. Visitor favorites include the basement bowling alley, vintage car collection and impressive Carillon tower. The English and Russian gates, both with an illustrious past, are also must-sees.

**Longwood Gardens**, one of the country's most extraordinary botanical gardens, is home to more than 1,000 acres of indoor and outdoor gardens. The vision of Pierre S. du Pont, it opened to the public in

1921. From 2021 to 2024, Longwood is going to embark on the largest makeover in its history, including the addition of a 32,000-square-foot conservatory that will seem to float on a shimmering pool of water.



**Mt. Cuba Center**, more than 500 acres, features rolling hills, stream valleys, rock outcrops, deciduous forests, and a manicured estate garden. The former estate of Lamont du Pont Cope and his wife, Pamela, it is home to some of the most spectacular displays of wildflowers in the Mid-Atlantic.



*Want more? Add these attractions to your checklist:*

**THE DELAWARE ART MUSEUM** houses the largest collection of pre-Raphaelite art outside of the United Kingdom.

**THE BRANDYWINE RIVER MUSEUM OF ART**, with its spectacular setting on the banks of the river, showcases the works of the Wyeths, America's first family of art.

**THE DELAWARE CONTEMPORARY** features rotating exhibits by established and up-and-coming artists. Admission is free. Art is available for purchase.

**THE DELAWARE MUSEUM OF NATURAL HISTORY** is undergoing a transformation and will reopen in early 2022 as the Delaware Museum of Nature and Science. For details on programs and events that will be held at partner attractions while renovations at the museum are under way, visit [www.delmnh.org](http://www.delmnh.org).





# LOCAL FLAVOR



WILMINGTON,  
DELAWARE'S  
RESTAURANT  
SCENE  
DESERVES  
YOUR ATTENTION"

—FOOD & WINE, FALL 2020

Va La Vineyards



**T**HOUGH OUR CORNER OF THE MID-ATLANTIC MAY BE SMALL, WE ARE BIG ON PERSONALITY. THERE ARE SO MANY COOL, OFF-THE-BEATEN-PATH THINGS TO DISCOVER HERE . . . IF YOU KNOW WHERE TO LOOK. OUR NEIGHBORHOODS ARE RICH IN ETHNIC DIVERSITY, INTERESTING ARCHITECTURE, CULTURAL CHARM, GOOD EATS OF ALL KINDS, AND MANY OPPORTUNITIES TO MAKE MERRY.

WHETHER YOU ENJOY ONE OF THE REGION'S MANY OUTDOOR DINING VENUES OR WATERING HOLES, TAKE A STROLL THROUGH ONE OF OUR CITY PARKS, OR GO EXPLORING THROUGH ONE OF OUR CITY DISTRICTS TO SEE WHAT FINDS YOU CAN DISCOVER, YOU ARE IN FOR AN ADVENTURE. **DON'T KNOW WHERE TO START? WE'VE DONE THE GROUNDWORK FOR YOU.**



## FOOD!

IN THE PAST YEAR, OUR FOOD SCENE HAS DRAWN THE ATTENTION OF NATIONAL MEDIA, INCLUDING *FOOD & WINE*, *TRAVEL + LEISURE*, *DAILY BEAST*, *CNN* AND MORE.

INTO FINE DINING? WANT SOMETHING MORE CASUAL? WE'VE GOT IT ALL HERE. ↓

Topping the list of must-experience dining spots are *Bardea Food + Drink*, a James Beard semifinalist serving up truly innovative (and delish) Italian dishes, and *Le Cav*. *Le Cav* (short for *Le Cavalier at the Green Room*) is a modern French brasserie located in the luxe *HOTEL DU PONT*.

*The House of William & Merry* should also be on every foodie's bucket list. Located in a 1922 farmhouse, the restaurant has racked up an impressive number of culinary awards and recognitions.

Newcomer *Goober's Diner* serves breakfast all day. A few other downtown standouts include the *DE.CO* food hall, *Chelsea Tavern*, *Farmer and the Cow*, and *Mikimotos Asian Grill & Sushi Bar*.

Want even more dining options? In Trolley Square, grab tacos and tequila at *BarRoja* or saddle up to the raw bar at *Trolley Square Oyster House*.

In a town with many excellent Italian restaurants, *Piccolina Toscana* is one of the best. If you are in the neighborhood around brunch time, *Kid Shelleen's* is an excellent choice. For chef-driven, locally sourced casual fare, head to *Metro Pub & Grill* in Middletown.

*A complete list of our many dining options, including four seasons of outdoor dining, can be found by [clicking here](#).*

**T**hen there are the local favorites: iconic foods of our region, some of which you'll be hard pressed to find anywhere else:

★ The Bobbie, a.k.a. Thanksgiving on a roll, has been spotlighted in *Esquire* magazine and on the Food Network. AOL.com named it "The Greatest Sandwich in America." Try it where it originated at *Capriotti's* (the original location on Union Street).

★ Another regional fav — perfect for Sunday dinner — is roast chicken and slippery dumplings. Want to give it a try? Go to *Lettie's Kitchen*.

★ Wilmington is home to a large Italian-American community. One popular Italian-inspired dish is tomato pie. It's nothing like the Southern version, by the way. Pick some up at *Serpe's*.

★ Crab sauce. What is crab sauce? We are not entirely sure, but we know it is good. Sit down to a table of hard shells and dip the crabmeat in this vinegary concoction. *Lestardo's* is one of a handful of places that serves it.



MOONLOOP PHOTOGRAPHY

*Farmer and the Cow*



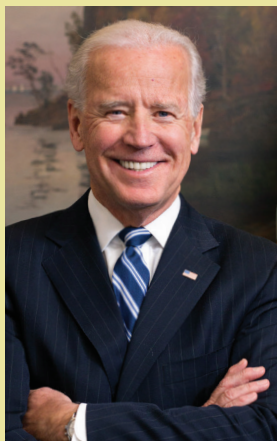
JOEL PLOTKIN

*Goober's Diner*



MOONLOOP PHOTOGRAPHY

*Kid Shelleen's*



## LIVE LIKE THE FIRST FAMILY

Since age 10, President Joe Biden has called Greater Wilmington and the Brandywine Valley home. Here are some Biden-related local spots that you can visit.

(For the full Biden itinerary, [click here](#).)

★ **THE JOSEPH R. BIDEN RAILROAD STATION.** Biden has been a regular at this Amtrak station for years, commuting between the First State and Washington, D.C. during his tenure in the U.S. Senate.

★ A short walk from the Amtrak Station is **THE QUEEN**. This historic live music venue became the temporary office of the Biden-Harris team as they planned to transition to the White House.

★ The romantic **INN AT MONTCHANIN** is where VP Harris's family stayed and dined during the election. It features a spa and a gourmet restaurant, **KRAZY KAT'S**.

★ Biden is a longtime fan of the burgers and shakes at **THE CHARCOAL PIT**. When President Barack Obama came to Wilmington in 2014, the two made a stop here.





## WHY NOT TREAT YOURSELF?

At SpringHill Suites, we offer an array of amenities like spacious suites, a complimentary hot and healthy breakfast, a refreshing pool, and an inviting lounge with a full-service bar to help you indulge, unwind and escape your routine.

### SEE OUR OFFERS PAGE FOR SPECIAL RATES

Book at [springhillsuites.com](https://springhillsuites.com)

**SPRINGHILL SUITES BY MARRIOTT®**  
**SpringHill Suites By Marriott Newark Downtown**  
402 Ogletown Road / Newark, DE USA 19711  
P 302.273.1000 [Marriott.com/ILGSS](https://Marriott.com/ILGSS)

Special discounted rates and perks for groups of 10 or more rooms. Speak to a Sales Manager today!





## BEER AND WINE!

WITH MORE THAN 20 BREWERIES, WINERIES AND DISTILLERIES IN NORTHERN DELAWARE AND JUST ACROSS THE BORDER IN PENNSYLVANIA, A TRIP ALONG OUR BEER-CENTRIC OR WINE-CENTRIC TRAILS IS A FABULOUS WAY TO SPEND A FEW DAYS.

DOWNLOAD THE “**DELAWARE ON TAP**” APP TO CHART YOUR COURSE (IT ENCOMPASSES THE ENTIRE STATE). TO GIVE YOU A HEAD START, HERE ARE A NUMBER OF OUR LOCAL FAVORITES: ↓



Stitch House Brewery



MOONLOOP PHOTOGRAPHY



THE CITY'S CRAFT COCKTAIL SCENE IS ON FIRE! EXPERIENCE IT AT **MERCHANT BAR, TORBERT STREET SOCIAL AND THE CROW BAR.** HAVE YOU EVER BEEN TO A SPEAKEASY? JUST STOP



INTO CATHERINE ROONEY'S, AND ASK FOR THE SECRET PASSWORD TO THE ELEGANTLY CLANDESTINE HUMMINGBIRD TO MARS.

## BEER, MEAD, CIDER

- ★ **Iron Hill Brewery** has one location in Newark and another on the Wilmington Riverfront (with more than 20 nationally). Grab a house-brewed pint on a sunny day, and enjoy it al fresco.
- ★ **Dew Point Brewing Company**, located in a historic mill, is the place to go if you are a fan of Belgian beers.
- ★ **Bellefonte Brewing Company**, squirrelled away inside a former storage space, is brewing up some seriously flavorful beers, from stouts and cream ales to IPAs and IPLs.
- ★ **Liquid Alchemy** is Delaware's only meadery (they also make cider). It offers an ever-rotating mix of food trucks and outdoor live entertainment.
- ★ **Stitch House Brewery** has a great lineup of brews (if you like sours, try the Pineapple Jawn) in addition to an excellent menu of yummy pub fare to complement the suds.
- ★ **Volunteer Brewing Co.** is a small-batch brewery with a constantly changing tap list, so grab your favorite brew quick before it is gone!
- ★ **Wilmington Brew Works**, housed in a 100-year-old former lab in the 9th Ward, brews in a wide range of styles. Its IPAs, fermented with a cultivated wild yeast strain, have become a signature style.

## WINE

- ★ **Auburn Road Vineyard & Winery:** Go for the wine, and stay for the Ravello wood-fired pizza or gourmet Buddha basket at Enoteca, its European-style wine bar. Outdoor dining is available.
- ★ **Harvest Ridge Winery** is a family farm winery established in 2010. Pay a visit to one of their two tasting rooms, and you'll feel like you have stepped back in time as you sample their vino.
- ★ **Pewees Woods Winery** produces internationally recognized, award-winning wines from all Pennsylvania-grown grapes.
- ★ **Va La Vineyards** is a small-batch winery growing grapes on only six acres... but the results are absolutely astounding, particularly if you like Italian varietals.



*Experience the beauty...*



**Newly Renovated Suites, State-of-the-Art Legal Centers,  
Beautiful Ballroom and Meeting Space!**



**SHERATON**  
Suites Wilmington Downtown

**Sheraton Suites Wilmington Downtown**

422 Delaware Avenue, Wilmington DE 19801

302.654.8300

[Marriott.com/ILGSI](http://Marriott.com/ILGSI)

[cperry@sheratonwilmington.com](mailto:cperry@sheratonwilmington.com)





## FUN!

FOR SOME RETAIL THERAPY, TOPPED OFF WITH MORE GOOD EATS, CHECK OUT: ↓



Grain Craft Bar & Kitchen



Christiana Mall



Wilmington Riverfront

MOONLOOP PHOTOGRAPHY

★ Centreville is an excellent place to wander around. Have lunch first at [Centreville Café](#) or [Buckley's Tavern](#). Then, stroll down the town's main street to hunt for (retail) treasures. [Adorn Goods](#) features fashion, home goods, as well as gifts for your kids and fur babies. [The Beehive](#) specializes in refurbished antique furniture. [Crystal's Vintage and Costume Jewelry](#) is the ideal place to pick up the perfect gift for the hippie chick in your life.

★ If boutique shopping (and more eating) is your game, head to Greenville. This neighborhood is home to an impressive mix of upscale shops and restaurants. Pick up a gourmet gift basket at [Janssen's Fine Foods](#). Get your fashion fix at the [Wilmington Country](#)

[Store](#) and [Ellie](#). Shop for home goods and ephemera at [Whimsy](#). Wrap up with a leisurely meal at [Pizza by Elizabeths](#) or [BBC Tavern & Grill](#).

★ The college town of Newark has a great variety of independently owned stores on Main Street, including [Bloom Newark](#), [Aunt Margaret's Antique Mall](#), and [Rainbow Records](#)... a mainstay since 1979. Just off I-95, you'll find [Christiana Mall](#), Delaware's largest shopping mall. Newark is also home to the [University of Delaware](#) as well as more than a dozen restaurants, including [Taverna](#), [Caffè Gelato](#), [Grain Craft Bar & Kitchen](#), and the [Stone Balloon Ale House](#).

★ In downtown Wilmington, stop by [Town & Shore Handcrafted](#). Designer

Liv McClintock crafts expertly made and stylish handbags, apparel, and jewelry. [A.R. Morris Jewelers](#) has been Wilmington's go-to place for fine jewelry since 1960. [Morgan's of Delaware](#) has all the styles to get you red carpet ready, from cocktail attire to everyday wear. Also check out Wilmington's Restaurant Row on Market Street.

★ [The Wilmington Riverfront](#) is the city's newest dining and entertainment district. There is so much to do here, you should consider spending the night. Each of the Riverfront's three new hotels offers views of the Christina River. [The Riverwalk](#) provides an easy connection to the restaurants, shops, recreational pursuits, live music, and performing arts venues in the area.





# WE LOOK FORWARD TO SEEING YOU SOON!

## When to Make Your Trip

**THERE IS ALWAYS PLENTY TO DO HERE.** Spring begins early, with the first blooms appearing as soon as late winter. Summer brings a flurry of outdoor fun, from water activities to late evening strolls through our many parks to sporting events. When the leaves begin to change, think back-road adventures, pumpkin picking, and fun autumn-themed events at our gardens, estates and museums. In winter, you can enjoy holiday lights and sights, seasonal sales (all shopping in Delaware is sales tax free), and great hotel rates.



Winterthur Museum

JEANETTE LINDVIG



Brandywine Creek State Park

LESLIE KIPP



HOTEL DU PONT

## Getting Here

### GETTING AROUND IS A BREEZE.

The easiest and most flexible way is to bring your own car. Amtrak is also an excellent option, particularly if you plan to stick within the city limits. Flying in? Philadelphia Airport is less than 30 minutes away, and Frontier Airlines offers steeply discounted flights between Orlando, Florida and the Wilmington Airport (ILG) located just five miles outside of Wilmington in New Castle, Delaware. Once you arrive, the bus is a convenient, inexpensive option. It's also easy to grab an Uber, Lyft or taxi. [Click here for more details on transportation options.](#)

Joseph R. Biden, Jr.  
Railroad Station

## More Information

For more travel ideas and to access our live chat manned by local residents who know all the ins and outs of our area, visit [www.VisitWilmingtonDE.com](http://www.VisitWilmingtonDE.com).

For statewide travel information, including the latest COVID precautions and guidelines, go to [www.VisitDelaware.com](http://www.VisitDelaware.com).

Check out our [blog](#) for details on the very latest happenings in our area and even more opportunities for adventure.

## Follow us

GreaterWilmingtonCVB

@VisitWilmington

VisitWilmingtonDE



@cyn.and.ccrew  
Longwood Gardens





## Excitement Awaits!

- Slot Machines on two spacious levels
- Live Table Games
- Public Golf Course
- Sportsbook for all Professional & College Sports
- Live Racing May 26 — Oct 16 and Year Round Simulcast Racing
- Dining choices for everyone

*Smoke-free environment!*

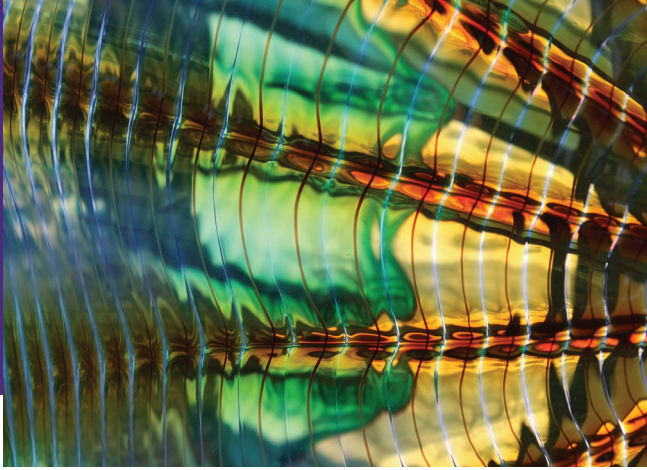
**CASINO**  
**at**  
**DELAWARE PARK**

COVID-19 PROCEDURES IN-PLACE FOR YOUR SAFETY.



Video Lottery Agent for the Delaware Lottery. All games are Lottery games controlled by the Delaware Lottery. You must be 21 to play. Play responsibly. If you or someone you know has a gambling problem, call the Delaware Council on Gambling Problems Helpline at 888-850-8888, [www.dgpp.org](http://www.dgpp.org)





## Need Art?

The Delaware Art Museum is alive with experiences, discoveries, and activities to connect people with art and with each other. The Museum features American Illustration, the British Pre-Raphaelites, and a fast-growing collection of significant contemporary art, which includes strong holdings of works by artists of color and female artists. Visit [delart.org](https://delart.org) for the latest programs, exhibitions, and performances or connect with us via social media.



**ART IS OUR CENTER,  
COMMUNITY IS OUR HEART.**

*COVID-19 Health and Safety measures  
are in place at the Museum.*

This organization is supported, in part, by a grant from the Delaware Division of the Arts, a state agency, in partnership with the National Endowment for the Arts. The Division promotes Delaware arts events on [www.DelawareScene.com](https://www.DelawareScene.com). Images, clockwise from top-right: **The Buccaneer Was a Picturesque Fellow**, 1905, for "The Fate of a Treasure Town," by Howard Pyle, in *Harper's Monthly Magazine*, December 1905. Howard Pyle (1853-1911). Oil on canvas, 30 1/2 x 19 1/2 inches. Delaware Art Museum, Museum Purchase, 1912. | **Lady Lilith**, 1866-1868 (altered 1872-1873). Dante Gabriel Rossetti (1828-1882). Oil on canvas, 39 x 34 inches. Delaware Art Museum, Samuel and Mary R. Bancroft Memorial, 1935. | **Persian Window** (detail), 2004. Dale Chihuly (born 1941). Blown glass, installation. Delaware Art Museum, F. V. du Pont Acquisition Fund and contributions, 2005. © Dale Chihuly/ Chihuly, Inc.

**2301 Kentmere Pkwy | Wilmington, DE  
302.571.9590 | [delart.org](https://delart.org)**