



PART OF THE TRIANGLE PARADE OF HOMES EVENT

FREE SELF-GUIDED NEW HOME TOUR

SEPTEMBER 28-29; OCTOBER 4-6, 11-13; Noon-5pm



919.493.8899 • TriangleParadeofHomes.com

SPONSOR





Years in business • 40+

of new homes built • 3800

Communities developed • 42

N.C. Counties we've built in • 7

Price range for a Cimarron Home • \$200-400k

NGBS & Energy Star Certified Homes • 100%

Neighborhoods now under construction • 4

Regional jobs created over the last 4 decades • 1000's

Number of clients we are focused on when
building your Cimarron Home! • Only 1



CIMARRONHOMES.COM | 1.877.500.9939

GATED ESTATE HOME SITES *Coming Soon!*



PLEASE CALL US TO DISCUSS YOUR
UNIQUE ESTATE HOME
CRAFTED BY ONE OF OUR AWARD-WINNING BUILDERS

JULIE WRIGHT REALTY GROUP

DONNA MAGNUSSON

919.218.3724



located on NC HIGHWAY 751 just south of I-40 (EXIT 274)

Entrance to Colvard Farms is 1.7 miles on the right.

Information Center located at 7415 NC HWY 751, Durham, NC 27713

COLVARDFARMS.COM



SAVE THE DATE!

HIGH PERFORMANCE HOME TOUR

formerly known as

spring
greenHOMEtour

APRIL 25-26 AND MAY 2-3, NOON-5PM

SPRINGGREENHOMETOUR.COM

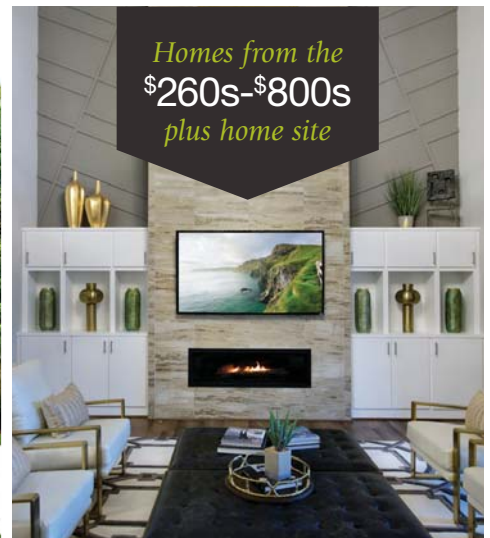


Beautiful new homes and remodel projects that have been Green Certified will be open and available for touring throughout the Triangle. A knowledgeable sales team — often the actual builder — will be available to answer questions. Come, tour and learn how a certified green home can save you money and improve your quality of life!



Built around you.

BUILD ON YOUR LAND OR OURS.



*Homes from the
\$260s-\$800s
plus home site*

- We can buy the lot for you or assist you in finding one
- Save thousands with no construction loan
- Accurate closing date

- One-step selection process at our award-winning Design Center
- Firm contract pricing

For a *FREE* lot evaluation or to learn more: (919) 263-0689 | dreeshomes.com





Fall Parade Home at Colvard Farms | Available For Purchase



Country Club Hills Model



Country Club Hills Model

LET US **WOW** YOU.


Colvard Farms | 104 Edwards Booth Lane

NOW AVAILABLE: This farmhouse design offers a unique combination of a master down, guest suite down, a fully outfitted prep kitchen adjacent to the main kitchen in the open concept area, and an expansive outdoor living area with outdoor kitchen and exposed timber truss architectural detail. The second floor includes several additional spacious bedrooms, two unfinished storage areas and a game room with bar area.

Blue Heron is a premier builder at Colvard Farms, uniquely located 2 miles from Southpoint Mall and I-40 yet surrounded by the unspoiled beauty of Jordan Lake's protected lands.



INSPIRING HOMES. BEYOND EXPECTATIONS.

Visit BlueHeronHomesNC.com | 919.297.2667 | Raleigh, North Carolina 



GOVERNORS
CLUB

JOIN US FOR AN EXCLUSIVE OPEN HOUSE

SUNDAY, OCTOBER 6TH • 1:00 p.m. – 4:00 p.m.

Experience Life at Its Best in Chapel Hill, NC

Come explore the Triangle's only premier, private, gated community in Chapel Hill, NC. Governors Club features 12 unique neighborhood settings, built around an award-winning 27-hole Jack Nicklaus Signature golf course.

Open House will feature more than 30 homes with prices ranging from \$400,000 - \$3M+.
Our newly-renovated Clubhouse will be open for tours.

Register at either gatehouse between 1:00 p.m. and 4:00 p.m. to start your self-guided tour.

Mount Carmel Church Road Gatehouse: 10120 Governors Drive, Chapel Hill, NC 27517

Lystra Road Gatehouse: 12000 Governors Drive, Chapel Hill, NC 27517





ASHLEY APPLEWHITE
(THE JIM ALLEN GROUP)
PARADE COMMITTEE CHAIR



ERIC CHUPP
(CAPKOV VENTURES, INC.)
HBADOC PRESIDENT

2019 PARADE COMMITTEE

Ashley Applewhite
The Jim Allen Group

Desiree Commodore
Drees Homes

Sarah Davis
New Homes and Ideas

Mason Hinkle
Adams Products

Stephanie Miller
Drees Homes

Debbi Nichols
Synergy In Print

Darrell Patterson
Lighthouse Garage Doors

Brandon Pendry
Southern Energy Management

Florica Shepherd
Sierra Pacific Mortgage

Lisa Skumpija
Absolute Construction & Development, LLC

Kathy Stasser
CalAtlantic Homes

Renee Strahler
Prime Lending

Melissa Szikszai
David Weekley Homes

Janice Ward
JW Distributors, Inc.

Anne Watson
SunTrust Mortgage

Your Dream Home Awaits You

The 36th annual Parade of Homes is the perfect opportunity to see the best home offerings from the top builders of the Triangle. Parade homes will be open for touring September 28-29, October 4-6, and October 11-13 from noon until 5 p.m. each day. With 52 homes on the tour (27 in Chatham County, 21 in Durham County and 4 in Orange County) and a variety of price ranges, there is something for everyone! You do not need a ticket and may visit any or all homes. And it's FREE!

We welcome you to use the Parade of Homes to learn more about the builders and neighborhoods that make this region one of the best places to live in America. These homes are specifically selected to represent the latest in design, trends, and styles. With prices ranging from modest to exquisitely elaborate, there is something for everyone.

Our Parade of Homes is part of the Triangle Parade of Homes, a joint event of the HBA of Durham, Orange & Chatham Counties and HBA of Raleigh/Wake County. To learn more about touring Parade homes, visit www.TriangleParadeofHomes.com and search the homes based on criteria that meet your needs.

INCLEMENT WEATHER POLICY: In the event of inclement weather, please call the sales number for the homes you are interested in visiting to verify they are open.

PARADE VENDORS

Synergy in Print
Debbi Nichols, Parade Guidebook Publisher

Hart Palmer Design
Parade Guidebook Design and Production

Tar Heel Trophy
Plaques

AJ Young Illustrations
Renderings, Floorplans

Chris Moody
Camelot Illustrations
Renderings, Floorplans

Sign-A-Rama
Signage



Home Builders Association of Durham, Orange, and Chatham Counties
1821 Hillandale Road, Suite 1B-138
Durham, NC 27705 • 919.493.8899
www.TriangleParadeofHomes.com • www.hbadoc.com

HBA STAFF

Holly Fraccaro
Chief Executive Officer

Julie Carrow
Director of Special Events

Kristina Ellis
Director of Operations

Selina Day
Director of Membership & Councils



BOST CUSTOM HOMES, PHOTO COURTESY DUSTIN PECK PHOTOGRAPHY, WWW.DUSTINPECKPHOTO.COM

COVER PHOTO CREDITS

Main Exterior and Chandelier: **Best Custom Homes**
Dustin Peck Photography: www.dustinpeckphoto.com

Kitchen: **Blue Heron Signature Homes**

Small Exterior: **Poythress Construction Company**

10 beautiful homes on this years' Parade are being independently verified by an accredited third party and will receive National Green Building Standard (NGBS) certification.

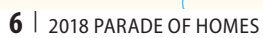


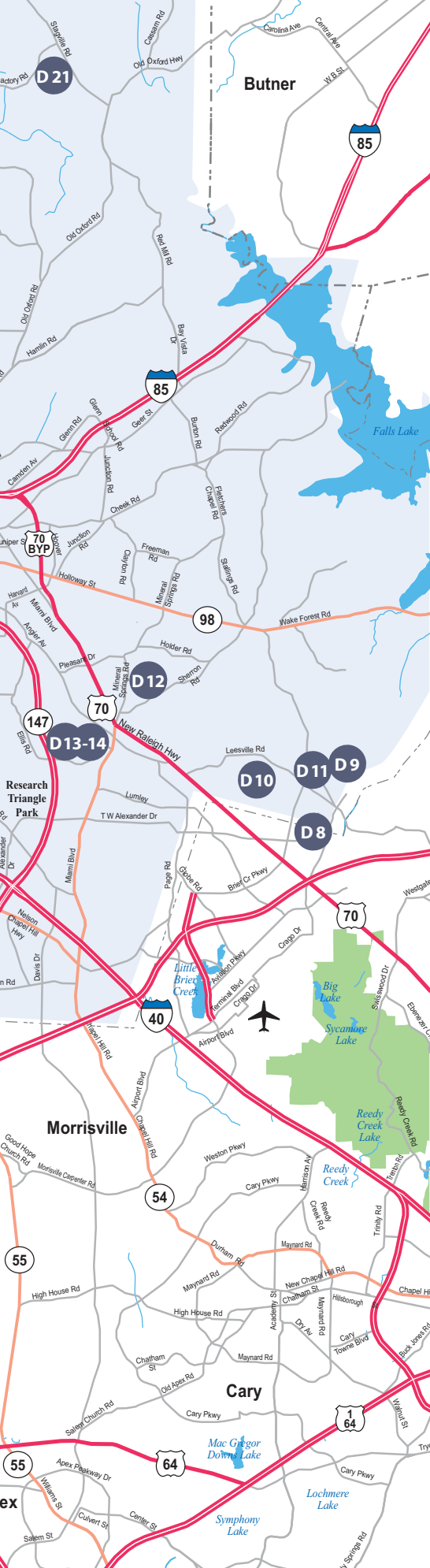
This certification focuses on six key areas: Site Design, Preparation & Development, Resource Efficiency, Energy Efficiency, Water Efficiency, Indoor Environmental Quality & Operation, Maintenance & Homeowner Education. The logo above appears on their entry pages.

Our special thank you to **Scott Talbert and Talbert Building Supply** for their assistance with tour book delivery and storage — every year!



All information pertaining to the homes in the Parade has been provided by the Home Builders Association. Publisher is not responsible for the accuracy of this information. The HBADOC is not serving as a broker or soliciting offers to purchase houses identified in the book. Nothing in this publication should be taken as an offer to sell any house, and no price listed herein should be relied upon for decisions regarding the purchase of any home.





HOMES BY COUNTY

GREEN TYPE DESIGNATES NGBS CERTIFIED GREEN HOMES

CHATHAM COUNTY

C1	Lennar	Cary
C2	Caruso Homes	Cary
C3	Upright Builders, Inc.	Cary
C4	Upton and Co	Cary
C5	Poythress Homes... (SOLD & UNAVAILABLE FOR VIEWING)	Cary
C6	Wagoner Homes, Inc	Cary
C7	Bost Custom Homes	Apex
C8	Sage Built LLC	Apex
C9	Hearthstone Luxury Homes - Arthur Rutenberg	Apex
C10	Hearthstone Luxury Homes - Arthur Rutenberg	Apex
C11	Poythress Constuction Company	Pittsboro
C12	Capitol City Homes	Pittsboro
C13	Halcyon Homes, LLC	Pittsboro
C14	Triple A Homes	Pittsboro
C15	Capitol City Homes	Pittsboro
C16	Sage Built	Pittsboro
C17	ICG Homes	Pittsboro
C18	ICG Homes	Chapel Hill
C19	Capitol City Homes	Pittsboro
C20	David Weekley Homes	Chapel Hill
C21	Homes By Dickerson	Chapel Hill
C22	David Weekley Homes	Chapel Hill
C23	Garman Homes, LLC	Chapel Hill
C24	Saussy Burbank	Chapel Hill
C25	Horizon Custom Builders	Pittsboro
C26	Robuck Homes Triangle, LLC	Chapel Hill
C27	Upright Builders, Inc.	Durham

DURHAM COUNTY

D1	Blue Heron Signature Homes	Durham
D2	Thomas Brent Custom Homes	Durham
D3	Homes By Dickerson	Durham
D4	Ryan Homes	Durham
D5	Saussy Burbank	Durham
D6	Drees Homes	Durham
D7	Taylor Morrison	Durham
D8	M/I Homes	Durham
D9	Taylor Morrison	Durham
D10	Epcon Communities	Durham
D11	Lennar	Durham
D12	Drees Homes	Durham
D13	Meritage Homes	Durham
D14	Ashton Woods	Durham
D15	Stanley Martin Homes	Durham
D16	Eastwood Homes	Durham
D17	Eastwood Homes	Durham
D18	Drees Homes	Durham
D19	Homes By Dickerson	Durham
D20	Homes By Dickerson	Durham
D21	Cimarron Homes	Durham

ORANGE COUNTY

O1	Winslow Homes, LLC,	Hillsborough
O2	Peloquin Construction	Hillsborough
O3	Lennar	Hillsborough
O4	Capitol City Homes	Mebane



MODERN PRINCIPLES. MARVIN INNOVATION.

MARVIN® 

Introducing Modern.

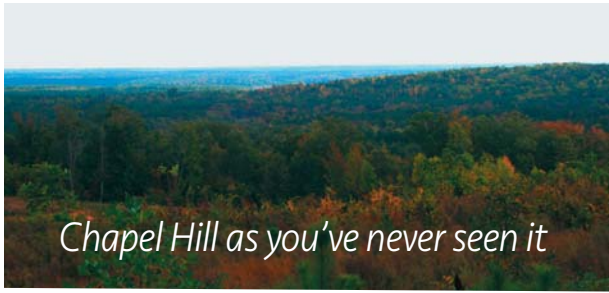
Part of the Marvin Signature Collection, our Modern line considers every detail. The result is a line of windows and doors that pairs pure modern design with category-leading energy performance.

Discover it at marvin.com/modern.

FIND YOUR INSPIRATION AT YOUR LOCAL, INDEPENDENT MARVIN DEALER TODAY.



Durham: 919-286-5561
Roxboro: 336-599-1135
Asheboro: 336-625-2195
Clarksville: 434-374-7355
www.talbertbuildingsupply.com



WESTFALL WOW!



There's a lot of "wow factor" at Westfall in Chapel Hill. First there's the unbelievable location, just 9 miles from Franklin Street and only 3 miles from Jordan Lake. Then there are the spectacular panoramic views of the whole Triangle. The setting itself is beautiful with rolling topography, preserved open space, and greenways and trails throughout.



There are neighborhood amenities for every lifestyle including a resort-style pool and cabana, turf sports field, and kids' playground.

Then there are the homes—exquisite custom residences situated on homesites large enough for your family to enjoy.

Visit today and discover your "Westfall wow" now!

ICG Homes



Introducing The Overlook, quite literally the high point of Westfall. The largest homesites, the most beautiful vistas. The possibilities are as unlimited as the views. Priced \$800s+.

The Overlook
AT WESTFALL



UNC PHOTO: JUSTIN WATT



Arthur Rutenberg Homes

Chapel Hill address | Chatham County taxes

WESTFALL

Custom homes from the \$500s. For information visit Westfall-ChapelHill.com or call 919-525-3889. Furnished model open daily. From I-40/NC-54/US-64 take US 15-501 to Lystra Road, then right on Westfall Way. Sales by Coldwell Banker Howard Perry and Walston New Homes and Land.





PIAZZA AT STONEWATER

933 Mountain Vista Lane, Cary

3,494 s/f\$649,990

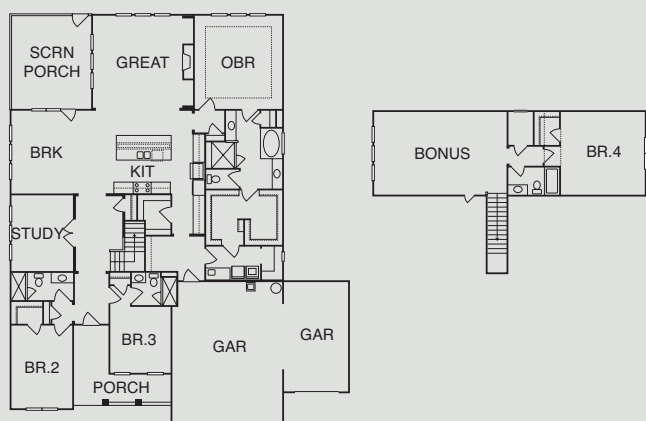
Lennar www.lennar.com

Sales: Lennar 919-465-9420

Plan by: Lennar

FEATURES

- Luxury ranch plan with one-story living
- Open floorplan design
- 10' ceilings and tall windows light up the space
- Full oak stairs with open railing
- Three bedroom suites on the first floor
- Luxurious owner's suite connected to laundry
- Second floor includes bed, bath and bonus room
- Formal study with French doors
- Three-car garage
- Screened porch, including ceiling fan and light



DIRECTIONS: From Raleigh, take I-40 W. Exit I – 540 W. Exit 66B towards NC 55/Durham. Turn left at light onto O'Kelly Chapel Rd, continue for 1.5 miles. Turn right onto Del Webb into Piazza at Stonewater. Right onto Mountain Vista Lane. Home is on your right.



SEQUOIA CREEK

1512 Betasso Drive, Cary

2,808 s/f\$633,431

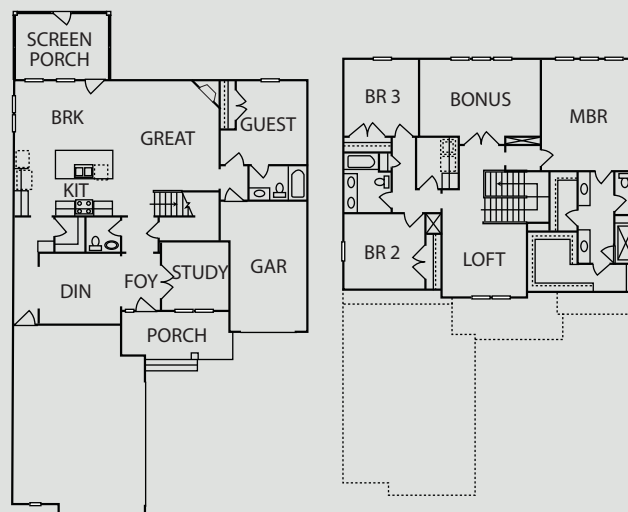
Caruso Homes www.CarusoHomes.com

Sales: Caruso Homes 919-678-5263

Plan by: GMD Design Group

FEATURES

- Guest suite on main level
- Three-car garage
- Home office main floor
- 8' doors and 10' ceilings throughout
- Separate vanities in master bath
- Low-maintenance surfaces throughout
- Private outdoor space
- Great home for entertaining
- Accessible storage areas
- Features rich and detailed trim



DIRECTIONS: I-540 to HWY 55 exit and take a right on Hwy 55 and left onto O'Kelly Chapel Rd. Drive 2 miles to left on Pittard Sears Rd. Drive 1/4 mile to right on Sequoia Creek Ln. Follow Sequoia Creek Ln to left on Bettaso Dr. Parade home on right in cul-de-sac.



MONTVALE

1617 Montvale Grant Way, Cary

4,145 s/f\$959,900

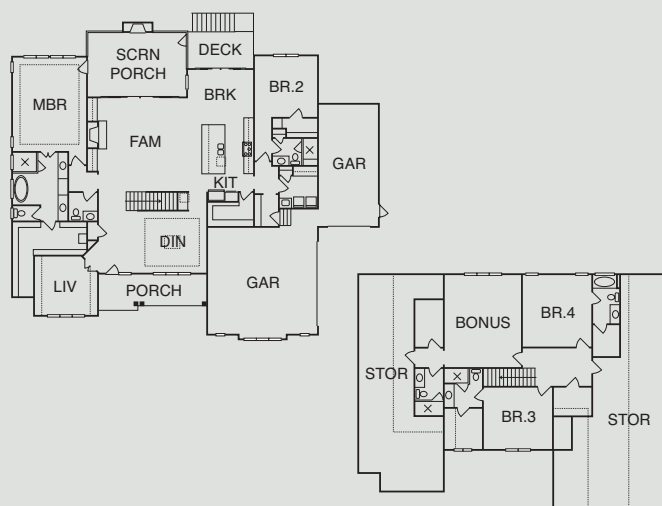
Upright Builders, Inc. www.uprightbuilders.com

Sales: Coldwell Banker HPW New Homes 919-656-1888

Plan by: Upright Builders, Inc.

FEATURES

- Award-winning custom home builder
- First-floor master suite
- First-floor guest suite
- Beautiful gourmet kitchen
- Open floor plan
- Study with built-in cabinets
- Rear porch with stone fireplace
- Large homesite
- Secondary bedrooms with en suites
- Stunning finishes in all rooms



DIRECTIONS: From I-540, take NC-55 North. Turn left on O'Kelly Chapel Road. Turn left on Yates Store Road. Turn right on Montvale Ridge Drive. Turn right on Montvale Grant Way. House is on the right.



MONTVALE

1621 Montvale Grant Way, Cary

3,636 s/f\$814,700

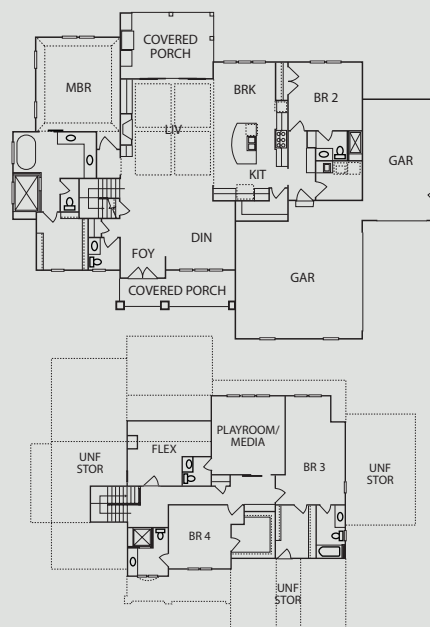
Upton & Co., Inc. www.uptonandco.com

Sales: Coldwell Banker HPW New Homes 919-656-1888

Plan by: Midtown Designs

FEATURES

- Duke Energy Star® certified
- Expansive open floor concept living area
- Sliding door to porch with fireplace
- Custom trim features throughout
- First-floor master and in-law suite
- Bar area located in kitchen
- Contemporary linear fireplace in family room
- First-floor laundry room
- Large walk in closets
- Rec half-bath upstairs
- Finished flex space upstairs



DIRECTIONS: Turn left on Carpenter Fire State Road off 55 in Cary. Left on Yates Store Road, continue straight, turn right into subdivision. House is on the right.



**THIS HOME IS SOLD AND UNAVAILABLE FOR VIEWING.
PLEASE CONTACT BUILDER FOR MORE INFORMATION**

MONTVALE AT COPPERLEAF

1713 Montvale Grant Way, Cary

3,672 s/f\$849,900

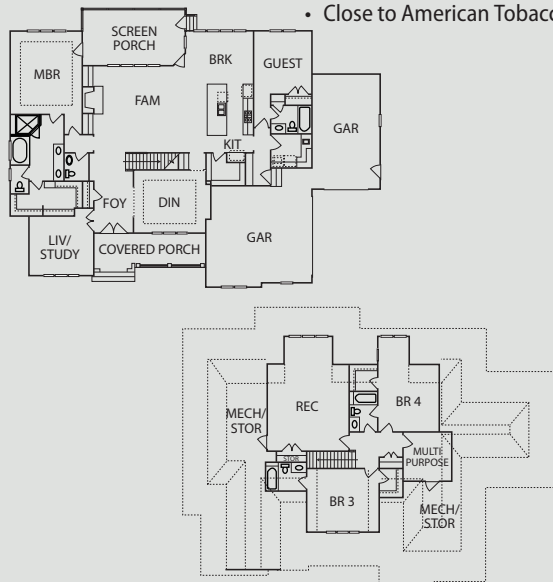
Poythress Homes..... www.poythreshhomes.com

Sales: Poythress Homes 919-388-3884

Plan by: Southern Home Designs

FEATURES

- Live Green certified
- First floor master bedroom and guest suite
- Large kitchen; open to family room and butler's pantry
- Living room/study
- Upstairs bonus room and multi-purpose craft/room
- Three-car garage and laundry room, mudroom with bench
- Covered porch and screened in rear porch
- Quartz and granite countertops throughout
- Lots of cabinets in kitchen; hardwood floors
- Tankless hot water heater
- Close to American Tobacco Trail



DIRECTIONS: Take Morrisville Parkway to right onto Hwy 55 to left onto Carpenter Fire Station Road. Turn left onto Yates Store Road 1.9 miles. Take a right onto Montvale Ridge Drive. Left on Montvale Grant Drive. Home is on the left.



MONTVALE AT COPPERLEAF

1625 Montvale Grant Way, Cary

3,582 s/f\$859,900

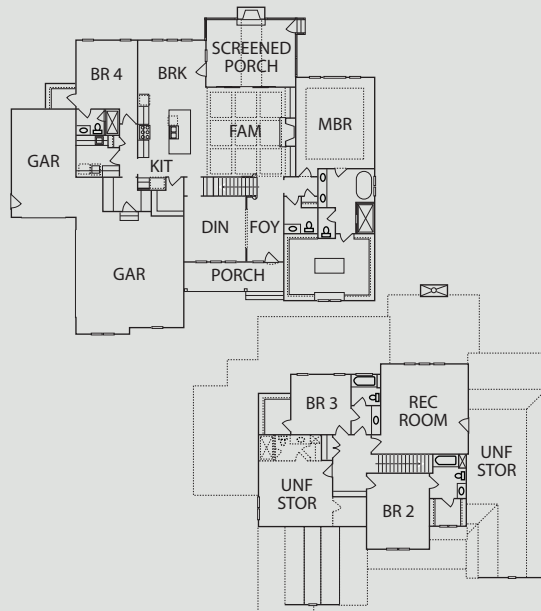
Wagoner Homes, Inc..... www.wagonerhomes.com

Sales: Coldwell Banker HPW New Homes 919-656-1888

Plan by: Frazier Design, LLC

FEATURES

- HERS certified
- Spacious downstairs master suite with sitting area
- Downstairs guest suite
- Custom trim work throughout
- Grand master closet with custom-built island
- Gourmet kitchen with large island and breakfast nook
- Open floor plan with spacious covered porch and exterior fireplace
- Site-finished hardwoods
- Designer tile
- Three-car garage
- Tons of storage



DIRECTIONS: From Hwy 55, left on Carpenter Fire Station Rd. Left on Yates Store Rd. Right on Montvale Ridge Dr. Right on Montvale Grant Way.



For “Move Down” Buyers These Nests Are Anything But Empty.

Phase II of Montvale is tailored to West Cary buyers who want to downsize and simplify—but don’t want homes that are “less than” in anything but square footage. Come see for yourself. Move up or move down, at Montvale Phase II you’ll want to move in!

MONTVALE ON PARADE • PARADE OF HOMES 2019



1617 Montvale Grant Way
Upright Builders \$959,900



1621 Montvale Grant Way
Upton & Co. \$814,700



1625 Montvale Grant Way
Wagoner Homes \$839,900


MONTVALE
AT COPPERLEAF



Ange Signature Homes · Hurst Home Company · ICG Homes · Poythress Homes
Poythress Construction Co. · Scott Daves Construction Co.
Upright Builders · Upton & Co. · Wagoner Homes

Phase I homes priced \$1,000,000-\$1,800,000+
Phase II homes priced \$700,000s-\$1,300,000+

Sales office open daily at 1072 Montvale Ridge Drive · 919-650-6414
montvalecary.com



Sales by Coldwell Banker Howard Perry and Walston New Homes and Land
© 2019 Montvale Partners, LLC



C7

DESTIN

809 Journeys Rest Lane, Apex

3,725 s/f \$1,355,000

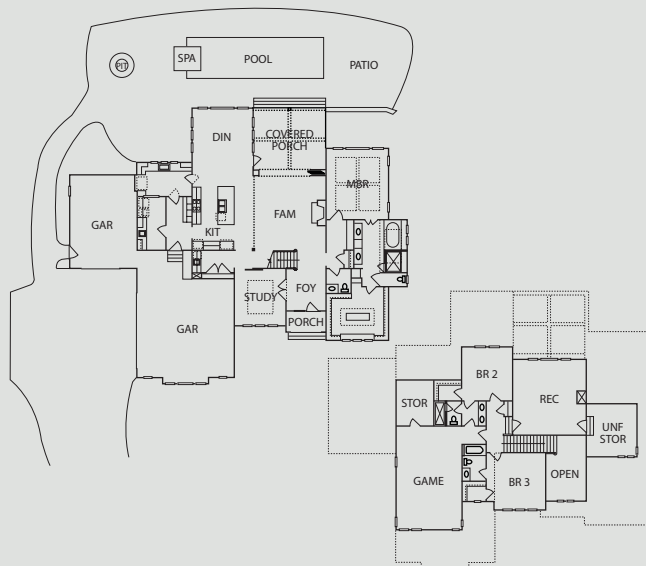
Bost Custom Homes www.bosthomes.com

Sales: Coldwell Banker HPW New Homes 919-789-5250

Plan by: Frazier Home Design

FEATURES

- ecoSelect certified
- Prairie-style exterior with modern shiplap
- 12' sliding patio pocket door
- Pool area and Phantom screen porch
- Chef's grade Wolf/Sub-Zero appliances
- Appointed scullery with sink and refrigerator
- Glass enclosed wine display and butler's pantry
- Modern floating stair with open risers
- Luxurious owner's retreat and spa bath
- Open kitchen, dining, family rooms



DIRECTIONS: From I-540, take the Green Level West exit and turn West. Right on Lewter Shop Rd. Left on Barbee Rd. Left into Destin community on Destination Drive. Right on Journeys Rest Lane. House is 2nd lot on the left.



C8

DESTIN

829 Journey's Rest Lane, Apex

4,835 s/f \$1,398,000

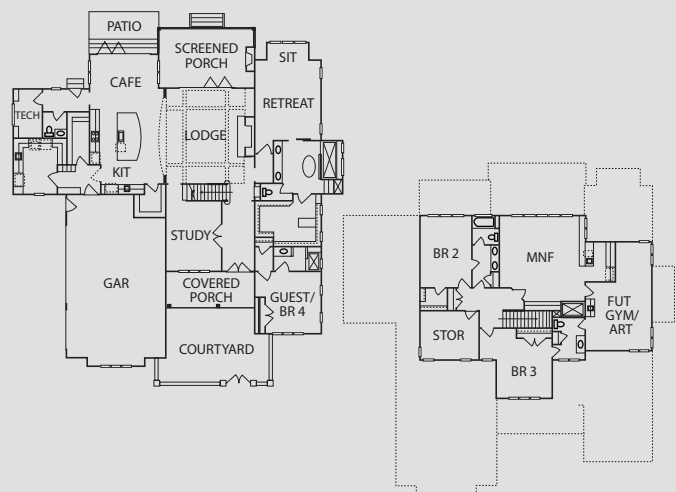
Sage Built LLC www.sagebuiltnc.com

Sales: Coldwell Banker HPW New Homes 919-789-5250

Plan by: Murphy Garnow Design Group Inc

FEATURES

- ecoSelect certified
- Mr. Wilson floorplan
- Area's only concierge-maintained living
- Gourmet SubZero-Wolf kitchen and bars
- All Kohler WaterSense home
- Ideally located between SouthPoint and Jordan Lake
- Gated European courtyard with fountain
- Exclusive Artisan V-Groove siding
- Programmable heated tile flooring
- 1/2 acre irrigated wooded homesite
- Retractable motorized Phantom screens



DIRECTIONS: From 751, turn on to Lewter Shop Rd, go 1 mile to Barbee Rd and turn left. Take your first left into Destin and then the immediate right on to Journey's Rest Lane. This home is up on the left.

An aerial photograph of a resort-style pool and clubhouse at dusk. The pool is rectangular with a curved edge, surrounded by a white deck with lounge chairs and orange umbrellas. The clubhouse is a large, light-colored building with a dark roof and large windows, some of which are illuminated from within. The background shows a dark, wooded area under a twilight sky.

360° have it all living.

Legacy
JORDAN LAKE™

Inside. Outside. EverySide Living.

Conveniently Located to Research Triangle Park | Adjacent to Picturesque Jordan Lake | Gated Entry | Large Fitness Center
Short-Iron Golf Course | Resort-Style Pool | Clubhouse | Miles of Walking Trails | Spacious Homesites

NEW HOMES IN CHAPEL HILL BY NATIONAL BUILDER M/I HOMES

FROM THE UPPER \$300,000'S TO \$500,000'S

FURNISHED MODEL OPEN DAILY

919-337-9710

66 LEGACY CLUB DR., CHAPEL HILL, NC 27517

LegacyJordanLake.com





C9

LEXINGTON

156 Lexington Drive, Apex

4,468 s/f \$1,189,900

Hearthstone Luxury Homes — Arthur Rutenberg

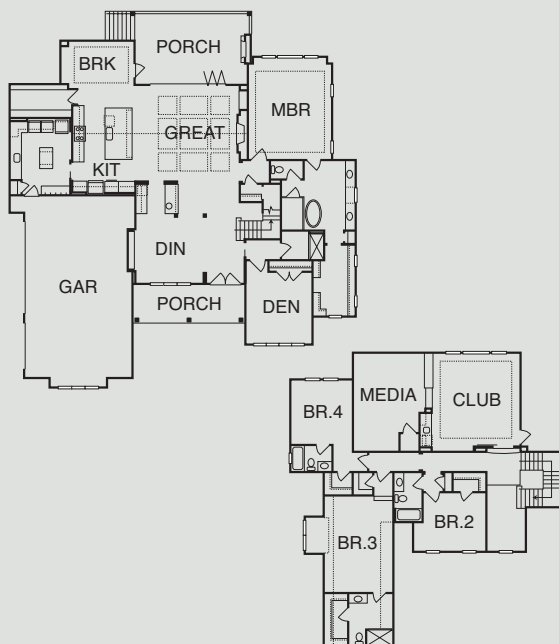
www.arthurrutenberghomes.com/builders/hearthstoneluxuryhomes

Sales: Hearthstone Luxury Homes 919-914-6244

Plan by: Arthur Rutenberg Homes

FEATURES

- Open design
- Main floor master suite
- Three bedrooms suites with private bath
- Club room with wet bar
- Media room
- Laundry suite with island
- Covered rear porch with fireplace
- Formal and casual dining
- Hidden pantry
- Three-car garage



DIRECTIONS: HWY 64 West to right onto HWY 751. Right onto Lexington Drive. Home on the right.



C10

LEXINGTON

185 Lexington Drive, Apex

4,025 s/f \$1,147,434

Hearthstone Luxury Homes — Arthur Rutenberg

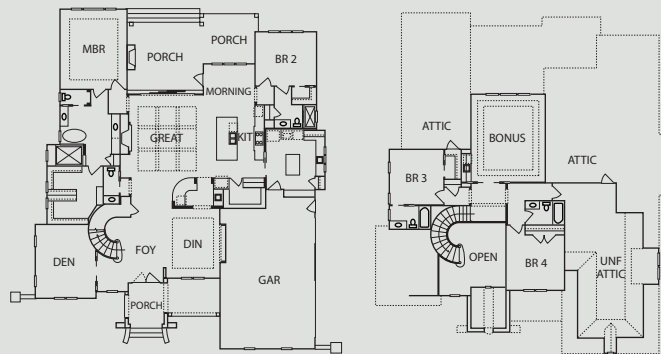
www.arthurrutenberghomes.com/builders/hearthstoneluxuryhomes

Sales: Hearthstone Luxury Homes 919-914-6244


Plan by: Arthur Rutenberg Homes

FEATURES

- Master and guest suites
- Laundry suite with center island
- Expansive rear porch with fireplace leading to fire pit
- Hidden pantry in kitchen
- Butler's pantry with wet bar and wine chiller
- Open foyer with curved staircase on main level
- Bonus room with wet bar and beverage center
- Den with 13' ceilings
- Three-car side load garage
- Phantom screens



DIRECTIONS: US 64 West to right on HWY 751. Proceed approximately 4 miles to right onto Lexington Drive. Home is first on left.



Discover a Place where convenience,
luxury and nature live in perfect harmony



Located right around the corner to
Vista Point at Jordan Lake with access to
boating ramp, camping, picnic area, playground,
beach and walking/hiking trails.



Visit Our Parade Home



181 Seaforth Landing Drive
5 BD | 4.5 BA | 4037 SF
Poythress Construction Co. | \$835,000



SEAFORTH LANDING

CUSTOM HOMES FROM THE UPPER \$600S

1.5 - 5+ Acre Homesites ~ Private and Wooded Views ~ Local Custom Builder Team
Minutes from Shopping, Dining and Many Recreation Facilities at Jordan Lake

SeaforthLandingNC.com | 39 Lakes Edge Lane, Pittsboro, NC 27312

FMB|FONVILLE MORISEY BAREFOOT 



SEAFORTH LANDING

181 Seaforth Landing Drive, Pittsboro

4,037 s/f\$835,000

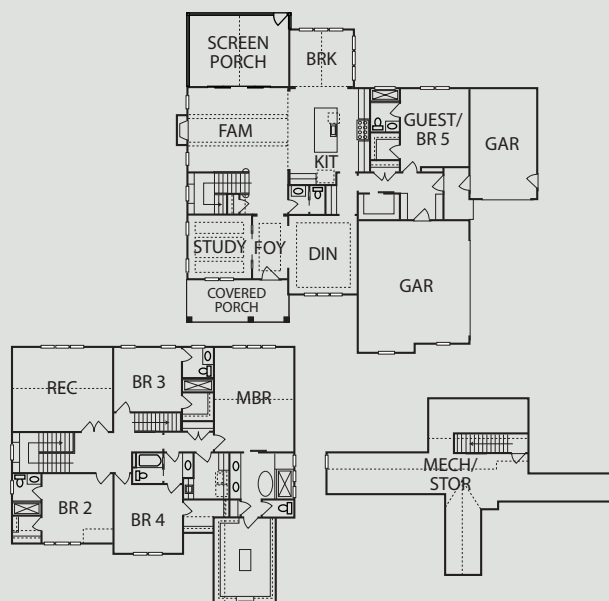
Poythress Constuction Company www.pccbuilder.com

Sales: Fonville Morisey Barefoot 919-926-5504

Plan by: Murphy Garnow Designs

FEATURES

- 1.8 acre large wooded lot
- Gourmet kitchen with custom range hood
- Luxury master bathroom
- Zero entry master shower
- 5 bedrooms with direct bath access
- Covered porch with fireplace
- Downstairs guest suite
- Three-car garage
- Brick veneer accents



DIRECTIONS: Raleigh/Cary/Apex: From I-540 and 64W go approximately 9 miles on 64W and cross over Jordan Lake and turn left on Seaforth Road.

Chapel Hill/Pittsboro: From US15/501 S take 64E approximately 6 miles and turn right on North Pea Ridge Road. Follow 2 miles and make a right on Seaforth Road. Seaforth Landing sales office located .5 mile on the left.



PENNINGTON AT JORDAN LAKE

75 Cotillion Way, Pittsboro

3,535 s/f\$700,000

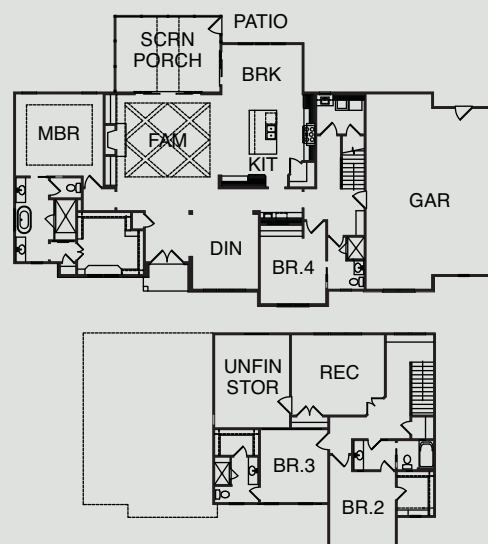
Capitol City Homes www.capitolcity-homes.com

Sales: The Jim Allen Group 919-845-9909

Plan by: Dynamic Design Group

FEATURES

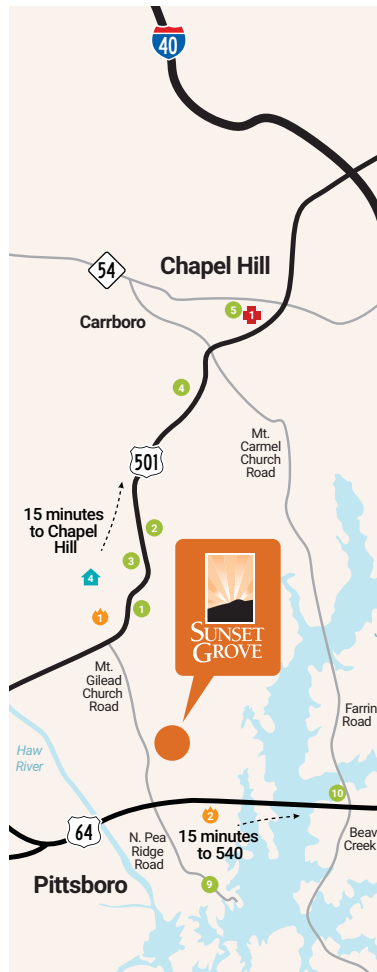
- Screen porch
- Concrete patio off of screen porch
- 10' ceilings on first floor
- Stone fireplace with built-Ins
- Coffered ceiling with stained beams in family room
- Gourmet kitchen with glass stacked cabinet doors
- White farmhouse sink in kitchen
- Accent trim wall in master bedroom
- Seven foot long walk-in shower in master bathroom
- Freestanding tub in master bathroom



DIRECTIONS: Head east on US-64 E toward Crosswinds Estates Dr. Turn right on Gentry Dr. Turn left onto Cotillion Way. Parade home is the one on the left.



Tranquil.



Convenient.



Sophisticated.



**SUNSET
GROVE**

Homes from the \$500s

- Wooded homesites ranging from 0.9 acres to over 2 acres
- Local, custom builder team
- Minutes to outdoor activities, shops & services
- Phase II opening late 2019
- **Visit our parade house at 235 Starwood Drive, Pittsboro**

Driving Directions:

From Raleigh/Cary/Apex: 64 West into Chatham County. Right on Mt. Gilead Church Road. Follow for one mile. Turn right on Sunset Grove Drive into the neighborhood. From Chapel Hill: 15-501 South to left on Mt. Gilead Church Road. Follow for three miles. Turn left on Sunset Grove Drive into the neighborhood.



SUNSET GROVE

235 Starwood Drive, Pittsboro

2,977 s/f\$639,000

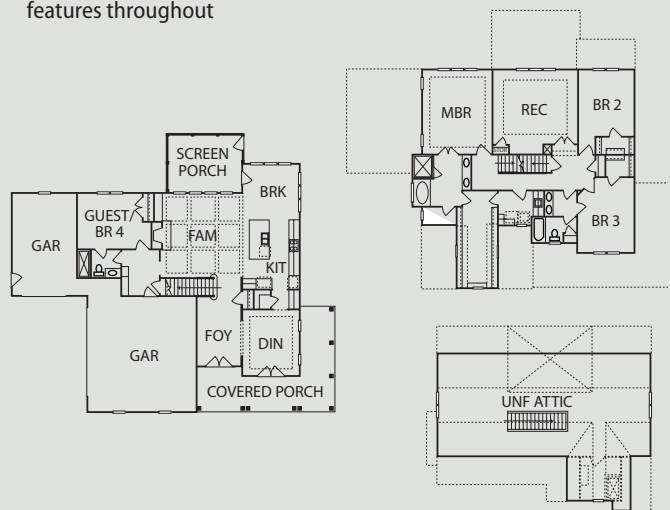
Halcyon Homes, LLC www.halcyonhomesnc.com

Sales: Bryan Properties 919-933-4422

Plan by: Murphy Garnow Design

FEATURES

- Southern living at its finest
- Gracious semi wrap-around front porch with natural stone surface floor and stained bead board porch ceiling
- Raised ceiling in living room with wood beams
- Custom interior millwork details throughout
- Exquisite upgrades and designer features throughout
- Quartz countertops
- Free-standing tub in master bath
- Many energy-efficient upgrades and features
- Unfinished walk-up third floor with future bath rough-in
- Large front and back yard with beautiful hardwood trees



DIRECTIONS: From 64 West, turn right on to Mt. Gilead Church Road and go about 2 miles and then T/R on to Sunset Grove Drive which goes in to Sunset Grove Subdivision. Go to the first road on the right; turn right on to Starwood and the house will be down on the left at the corner.



THE HAMPTONS

203 Rolling Woods, Pittsboro

4,237 s/f\$899,900

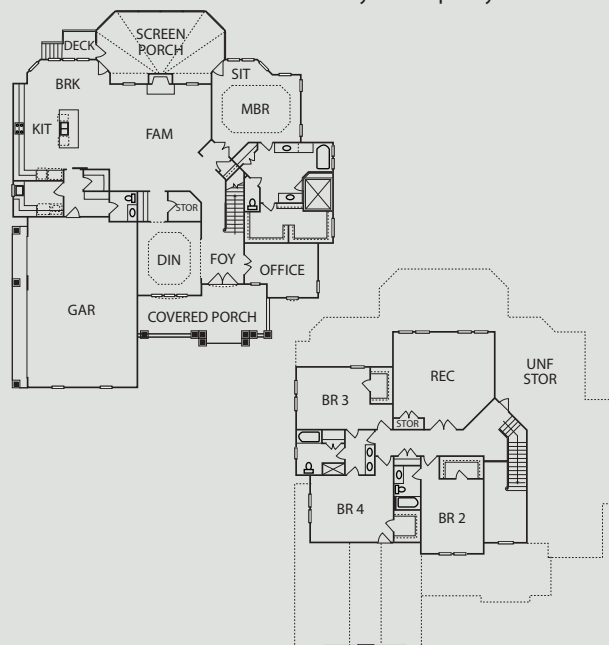
Triple A Homes www.tripleahomes.net

Sales: Windjam Properties 919-880-7516

Plan by: Homes Unique

FEATURES

- Elegant modern farmhouse
- Situated on 3+ acres
- Entertainers dream kitchen
- Screen porch with tranquil views
- Spa bath rivals the Umstead
- WIC for shopping aficionados
- Shiplap and barn doors galore
- More is more when it comes to space
- Wood ceiling details
- Style and quality abound!



DIRECTIONS: From US 64W, cross Jordan Lake, at the first light turn right on Mt. Gilead Church Rd. go 3 miles, Left on Laurel Knoll, left on Rolling Woods. House is in cul-de-sac.



C15

THE HAMPTONS

95 Rolling Woods Court, Pittsboro

3,937 s/f.\$875,000

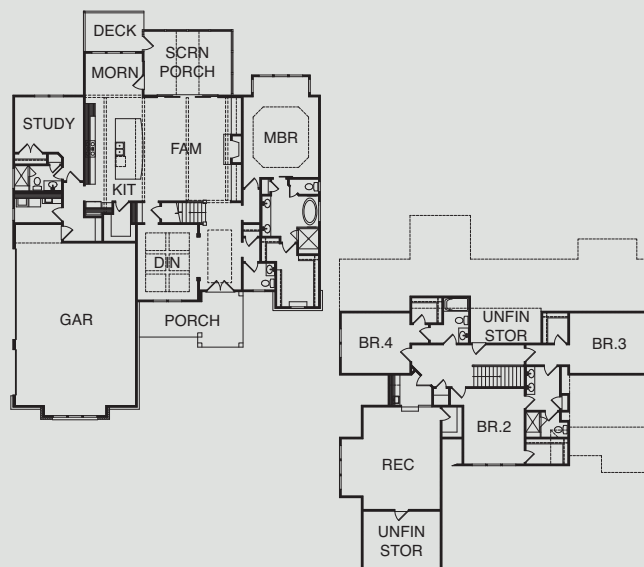
Capitol City Homes www.capitolcity-homes.com

Sales: Windjam Properties. 919-880-7516

Plan by: Dynamic Design Group

FEATURES

- Screen porch
- Morning room
- Brick fireplace with built-ins
- Ceiling beams throughout kitchen and family room
- Coffered ceiling in dining room
- 10' ceilings on first floor
- Gourmet kitchen with 12' long island
- White farmhouse sink in kitchen
- Quartz countertops in kitchen
- Freestanding tub in master bathroom



DIRECTIONS: Head southwest on US-1 S/US-64 W. Take exit 98B for US 64 W toward Pittsboro/Asheboro. Continue onto US-64 W. Turn right onto Mt Gilead Church Rd. Turn left onto Laurel Knoll Dr. Turn left onto Rolling Woods Ct. Parade home is on the left.



C16

THE HAMPTONS

35 Harvest Lane, Pittsboro

4,613 s/f.\$1,296,000

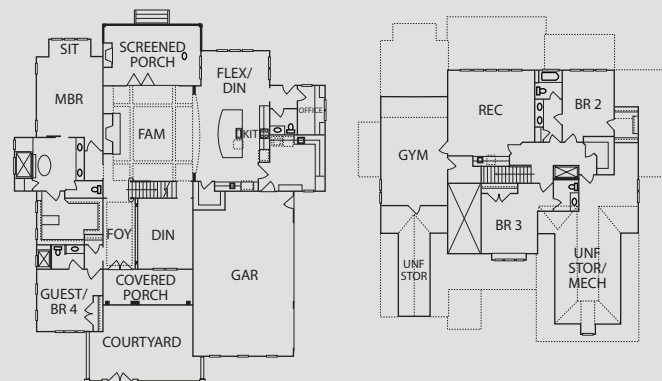
Sage Built. www.sagebuiltnc.com

Sales: Windjam Properties. 919-883-8528

Plan by: Murphy Garnow Design Group

FEATURES

- ecoSelect certified
- Master landscaping irrigated Tuff turf, courtyard, fountain and automated uplighting
- Veranda with retractable Phantom remote screening and folding glass doors
- Oversized three car garage and 10-car circular driveway
- Lifetime warranted Duration exterior paint by Sherwin Williams
- TechShield radiant barrier roof sheathing
- Flagstone porches
- Free-form paved patio with Australian Beefeater grill
- Authentic interior brick wall accents with archway
- Massively oversized quartz center island
- High-energy HVAC with fresh air supply



DIRECTIONS: From Chapel Hill, 15/501 South towards Pittsboro. Just past Fearington Village, turn left on Mt. Gilead Church Rd. Turn right on Laurel Knoll. The home is on the left.



CHAPEL RIDGE

794 Chapel Ridge Drive, Pittsboro

2,877 s/f\$495,000

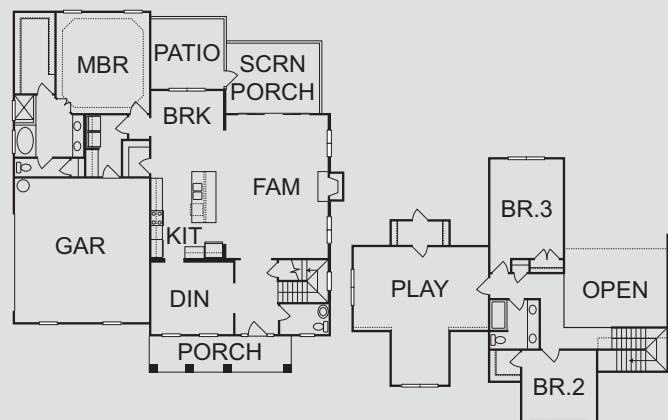
ICG Homes www.icghomes.com

Sales: Realty World Carolina Properties 919-946-3486

Plan by: JDS Consulting & Design

FEATURES

- Custom trim details throughout
- Gorgeous tile and lighting details
- First floor master suite
- Large playroom
- Quartz and granite countertops throughout
- Hardwoods throughout main living, and up and down halls
- Large slider in family room to screened porch
- Gourmet kitchen with walk in pantry
- Open floor plan
- Welcoming front porch



DIRECTIONS: From I-40, take exit 273A to merge onto NC-54 W toward Chapel Hill. Make a slight right to merge onto NC-54 W/US-15 S/US-501 S/Fordham Blvd, and keep left to continue to follow NC-54 W. Take the Jones Ferry Road exit toward Carrboro and use the left lanes to turn left onto Jones Ferry Road. Turn right onto Crawford Dairy Road, then turn left onto Chicken Bridge Road, and then left onto Old Graham Road/Old North Carolina 87 S. Turn right onto Chapel Ridge Drive, and then turn left to stay on Chapel Ridge Drive.



CHAPEL RIDGE

640 Cabin Creek Drive, Pittsboro

3,009 s/f\$550,000

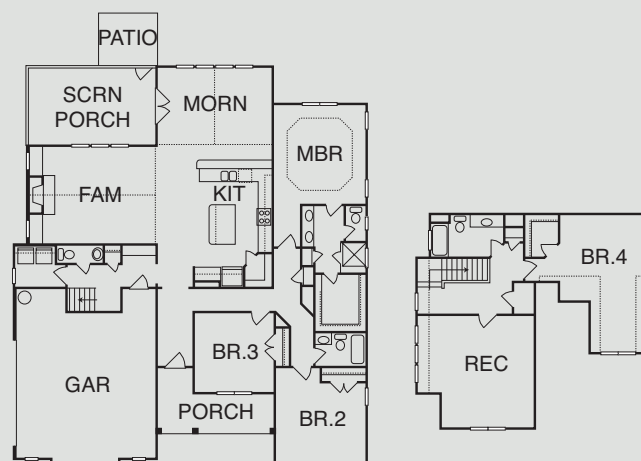
Capitol City Homes www.capitolcity-homes.com

Sales: Windjam Properties 919-880-7516

Plan by: Dynamic Design Group

FEATURES

- Screen porch
- Concrete patio off screen porch
- Morning room with ceiling beams
- Brick fireplace with custom built-ins
- Tray ceiling master bedroom
- Gourmet kitchen
- Quartz countertops in kitchen
- Glass upper cabinets in kitchen
- Stainless steel farmhouse sink in kitchen
- 6' wainscoting in foyer



DIRECTIONS: Head west on I-40 W. Take exit 293 toward US-1/US-64 W. Keep left at the fork onto exit 293A. Keep left and take exit 98B for US 64 W toward Pittsboro/Asheboro. Continue onto US-64 W. Take exit 381 toward NC-87 N. Turn right onto NC-87 N. Turn right onto Parks Meadow Dr. At the traffic circle, take the 3rd exit onto Golfers View. Slight left toward Cabin Creek. Parade home is on the right.



For us, it's never just another mortgage.

It's a young couple's first home. Or that dream home you're building from scratch. Or a larger home to fit a growing family. Each mortgage is special, just like each one of our Members. We hope you'll become one.

- **Construction to Perm**
- **Fixed-Rate**
- **Adjustable-Rate**
- **First Time Home Buyer**
- **Jumbo Mortgages**
- **Lot Loans**
- **HomeReady Mortgage**
- **Investment Property Loans**

Learn more at COASTAL24.com or visit a branch near you.

All loans subject to approval. Federally insured by NCUA





WESTFALL

77 Beech Slope Court, Chapel Hill

3,245 s/f\$614,900

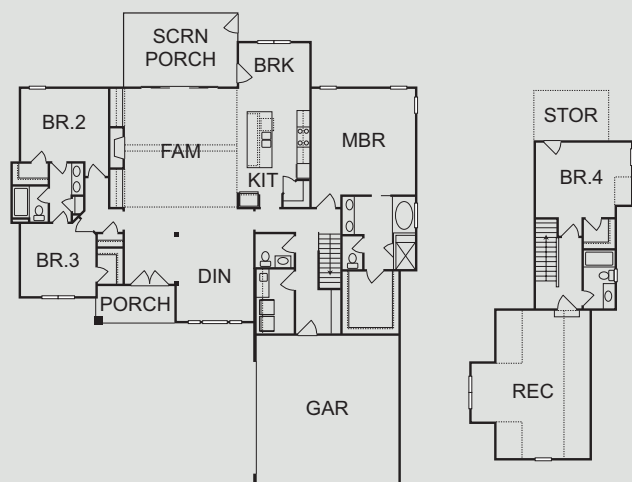
ICG Homes www.icghomes.com

Sales: Coldwell Banker HPW New Homes 919-525-3889

Plan by: Dynamic Design Group

FEATURES

- Custom carpentry throughout home
- Gorgeous tile and lighting details
- First floor master suite
- Free standing tub in the master bath
- Quartz and marble countertops throughout
- Custom wood shelving in all closets
- Large slider in family room to screened porch
- Gourmet kitchen with custom cabinets
- Open floor plan
- Large laundry room and drop zone



DIRECTIONS: From I-40, take Highway 54 west toward Chapel Hill. Take the 54/15-501 West exit toward Pittsboro. Turn left on Lystra Road, then right onto Westfall Way.



BRIAR CHAPEL

127 Birch Hollow Road, Chapel Hill

2,753 s/f\$440,750

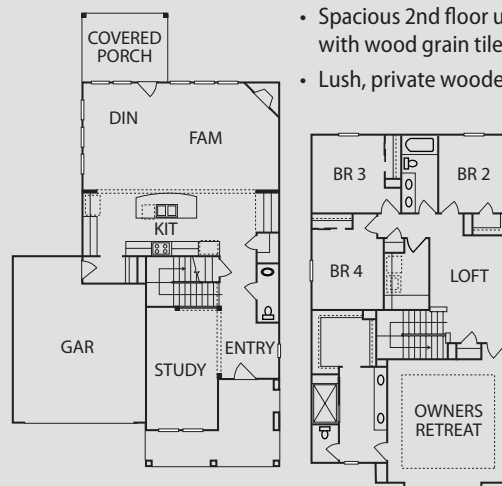
David Weekley Homes . . . www.DavidWeekleyHomes.com

Sales: David Weekley Homes 919-659-1563

Plan by: David Weekley Homes

FEATURES

- Environments for Living, NGBS Bronze, and ENERGY STAR® certified
- Award-winning open concept two-story home with airy 10' ceilings
- First-floor home office or den
- Chef's gourmet kitchen with an over-sized center island, stainless steel 5-burner cooktop and wall oven
- Chic contrasting maple cabinets with exclusive quartz countertops
- Private owner's retreat with spacious walk-in closet
- Frameless glass oversized shower featuring designer tile and rain shower head
- Family room boasts an elegant corner fireplace with impressive picture frame windows
- Spacious 2nd floor utility room with wood grain tiles
- Lush, private wooded homesite



DIRECTIONS: From Chapel Hill, take 15-501 South towards Pittsboro approx. 7 miles. Turn right onto Briar Chapel Parkway into the community. Follow Briar Chapel Parkway past the roundabout to the end and make a right on Boulder Point Dr. Turn left on Chapel Lawn Ave and then left on Birch Hollow Rd. Home will be on the left.



BRIAR CHAPEL

164 Logbridge Road, Chapel Hill

2,716 s/f.\$560,000

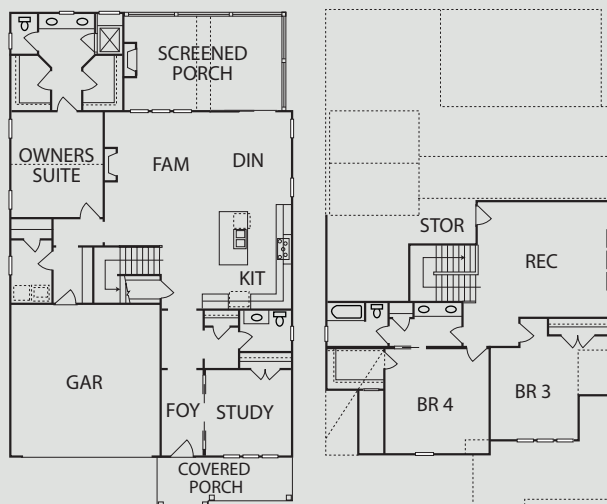
Homes By Dickerson www.HomesByDickerson.com

Sales: Homes By Dickerson Real Estate LLC 919-296-3820

Plan by: Homes By Dickerson

FEATURES

- NGBS and ENERGY STAR® certified
- First-floor master suite with vaulted ceilings
- Open living area with kitchen, dining and living room
- Owner's entry with custom lockers
- Rec room
- Ample storage
- Screen porch with fireplace
- Custom trim and tile details throughout
- Two car garage
- Triangle Builders Guild member



DIRECTIONS: From Chapel Hill, take 15-501 South towards Pittsboro approx 7 miles. Turn right onto Briar Chapel Parkway into the community. Cross bridge and at traffic circle continue on Briar Chapel Parkway until it dead ends. Make a right onto Boulder Point Drive, a left onto Chapel Lawn Avenue, and a right onto Logbridge Road. House will be on your right.



ENCORE AT BRIAR CHAPEL

192 Abercorn Circle, Chapel Hill

1,771 s/f.\$437,700

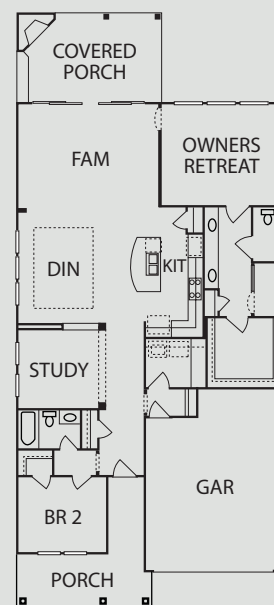
David Weekley Homes ... www.DavidWeekleyHomes.com

Sales: David Weekley Homes 919-659-1562

Plan by: David Weekley Homes

FEATURES

- Environments for Living, NGBS Bronze, and ENERGY STAR® certified
- Award winning 55+ Active Adult Lifestyle Community with exclusive clubhouse and pool
- Stunning outdoor corner fireplace on spacious covered porch
- Huge sliding doors from family room to porch to extend outdoor living
- Gorgeous kitchen with gas cooktop, wall oven and island with quartz countertops
- Soothing owner's retreat with owner's bath featuring granite countertops, luxury walk-in fully tiled shower with rain shower head
- Crown molding throughout
- Tray ceiling in dining room
- Ranch-style living at its best with two bedrooms, two baths, study and utility room all on one level
- Wonderful open concept perfect for entertaining and easy living



DIRECTIONS: From Chapel Hill, take 15-501 South towards Pittsboro approx 7 miles. Turn right onto Briar Chapel Parkway into the community. Follow Briar Chapel Parkway past the round-about and make a right on Whispering Wind. Next make a left on Boone Street. At the stop sign take a left onto Middleton Place. Take the first right onto Abercorn Circle and the home is on the right hand side as you enter the curve in the road.



BRIAR CHAPEL

843 Great Ridge Parkway, Chapel Hill

1,820 s/f\$334,900

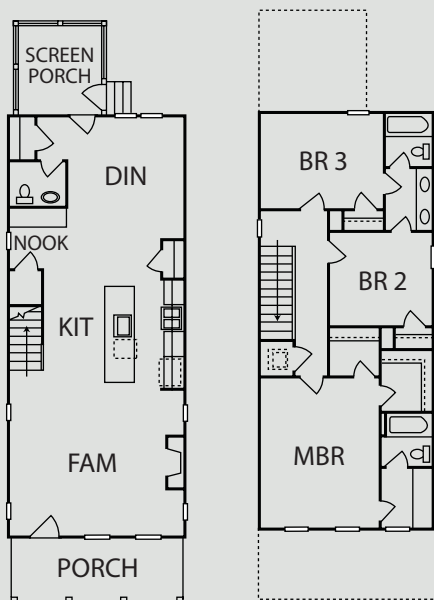
Garman Homes, LLC..... www.freshpaintbygarman.com

Sales: Garman Homes..... 800-560-1160

Plan by: Garman Homes, LLC.

FEATURES

- NGBS and ecoSelect certified
- Open and airy, great for entertaining
- Oversized quartz island
- Family room with gas fireplace
- Built-in desk in office nook
- Black and white cabinets in the kitchen
- Spacious master retreat
- Charming front porch
- Brushed brass accents
- Craftsman farmhouse mix
- Beautiful corner homesite



DIRECTIONS: Take I-40 to Exit 273A—Merge onto NC-54 W/US-15 S/US-501 S/Fordham Blvd. Follow 15-501 for over 5 miles then turn right onto Briar Chapel Pkwy. Follow Briar Chapel Pkwy until you get to the roundabout. Take your first right onto Great Ridge Pkwy off the roundabout — Parade Home will be on your right.



BRIAR CHAPEL

583 Great Ridge Parkway, Chapel Hill

2,199 s/f.....\$377,275

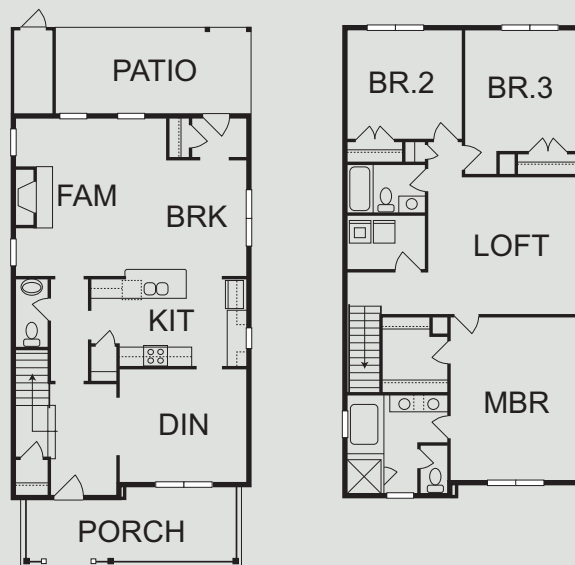
Saussy Burbank.....www.saussyburbank.com

Sales: Saussy Burbank..... 919-609-7608

Plan by: KDK Design & Saussy Burbank

FEATURES

- NGBS and ecoSelect certified
- Gorgeous site-finished real hardwoods
- Timeless architectural design
- Designer tile featured in kitchen and baths
- Two covered outdoor living spaces
- Chef-inspired galley kitchen
- Stainless steel appliances
- Functional open floorplan
- Expansive flex loft space
- Luxury quartz countertops
- High-end light fixtures



DIRECTIONS: From Chapel Hill, take 15-501 South towards Pittsboro approximately 7 miles. Turn right onto Briar Chapel Parkway into the community. Follow Briar Chapel Parkway to the traffic circle and take the first right onto Great Ridge Parkway. Continue along Great Ridge Parkway.



MAPLEWOOD BUILDING COMPANY



Celebrating our Remodelers!

The Remodelers Outstanding Construction Awards program was established in 2013 as a way to promote and celebrate the amazing remodeling projects our members completed in Durham, Orange and Chatham counties.

The competition is open to all projects completed within the past year in the categories of Kitchen, Bath, Addition, Outdoor Living, and Whole House. Projects are judged by industry professionals, such as contractors and designers, outside of our market area. Featuring the Triangle's premier remodelers including:

- ACTUAL SIZE BUILDERS
- GRAU BUILDING COMPANY
- MAPLEWOOD BUILDING CO.
- NEW VISTA HOMES
- PETER THORN BUILDERS
- RED LADDER RESIDENTIAL
- TRINITY DESIGN BUILD



MAPLEWOOD BUILDING COMPANY



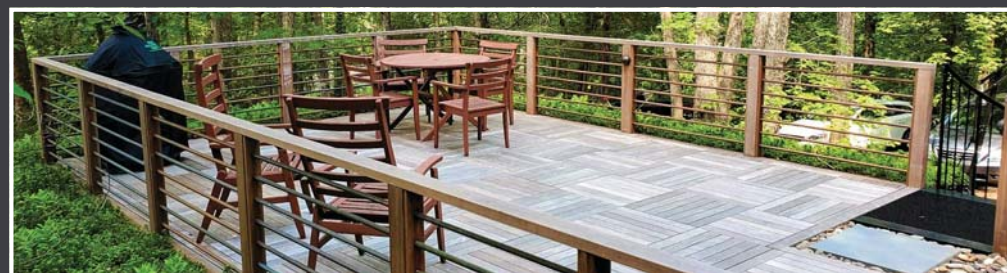
TRINITY DESIGN BUILD



ACTUAL SIZE BUILDERS



NEW VISTA HOMES



ACTUAL SIZE BUILDERS

PLEASE JOIN US FOR THE REMODELERS OUTSTANDING AWARDS

October 29, 5:30–7:00 pm; Top of the Hill, Chapel Hill. Open to members and non-members.
\$30/pp until October 10; \$35/pp thereafter. Contact Selina Day for details: 919-493-8899.

THANKS TO THESE SPONSORS

EVENT SPONSOR



AWARDS SPONSOR



FIND A REMODELER!

www.hbadoc.com/pages/ROCAwards
www.facebook.com/ROCAwards



www.hbadoc.com
919.493.8899



STONECREST AT NORWOOD

197 Stonecrest Way, Pittsboro

3,456 s/f\$719,900

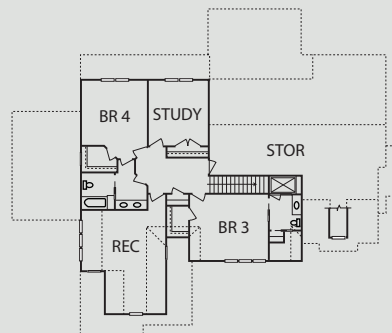
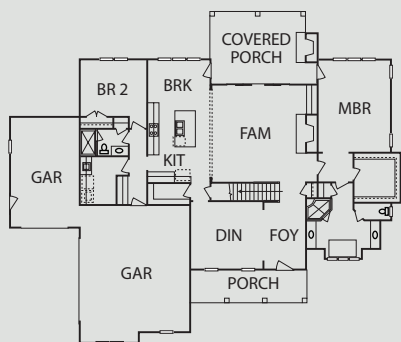
Horizon Custom Builders . . . www.horizoncustombuilders.com

Sales: Coldwell Banker HPW New Homes & Land . . . 919-329-8577

Plan by: Frank Betz Associates

FEATURES

- ENERGY STAR® certified
- 1.97 acres with private backyard
- Four bedrooms and four baths
- First-floor owner's suite
- First-floor guest suite
- Gourmet kitchen with large island
- Screened porch with wood-burning fireplace
- Bonus room



DIRECTIONS: From Chapel Hill, take 15/501 South towards Pittsboro. Turn right onto Manns Chapel Road. Turn right onto Stonecrest Way. This home is the first house on the left.



LEGEND OAKS

1442 Legend Oaks Drive, Chapel Hill

2,740 s/f\$570,000

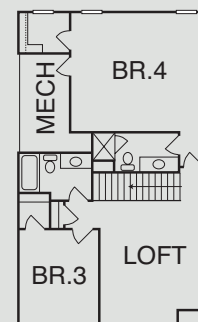
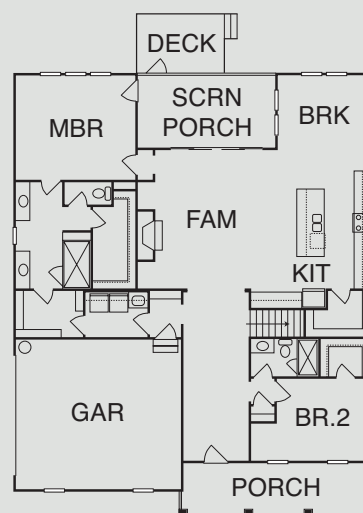
Robuck Homes Triangle, LLC www.robuckhomes.com

Sales: Fonville Morisey Barefoot 919-926-5537

Plan by: GMD Design Group

FEATURES

- Custom crafted architecture
- Gourmet kitchen with gas cooktop
- Large kitchen island
- Coffered ceiling in master bedroom
- Ceramic tile in all baths and laundry
- Modern farmhouse trim details
- Sliding glass door to screened-in porch
- 6 miles to downtown Chapel Hill
- 3.5 miles to Southern Community Park, playground, sports field and trails
- Triangle Builders Guild member



DIRECTIONS: From Downtown Chapel Hill, follow U.S. Hwy 15/501 South for 7 miles. Make a U-turn at Lystra Rd, and turn right into Legend Oaks community onto Legend Oaks Drive. Continue on Legend Oaks Drive; home will be on the right.



COLVARD FARMS

41 Crimson Oak Drive, Durham

4,694 s/f\$900,000

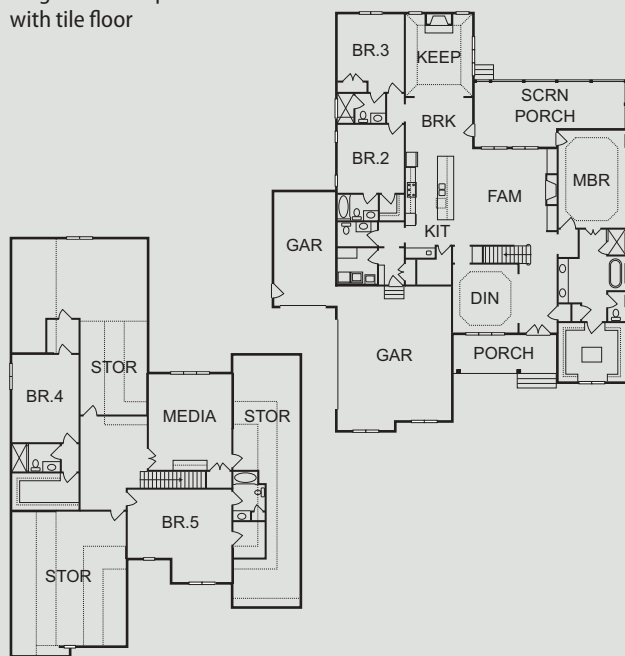
Upright Builders, Inc. www.uprightbuilders.com

Sales: Julie Wright Realty Company919-306-4662

Plan by: Upright Builders, Inc.

FEATURES

- Award-winning builder
- First floor master suite
- First floor guest suite
- Stunning finishes
- Keeping room with fireplace
- Large screened porch with tile floor
- Beautiful custom cabinetry
- Bonus room with wet bar
- Secondary bedrooms with en suites
- Gourmet kitchen



DIRECTIONS: Hwy 751 to Colvard Farms Road. Left on Crimson Oak. Home on left.



COLVARD FARMS

104 Edward Booth Lane, Durham

4,430 s/f\$1,174,900

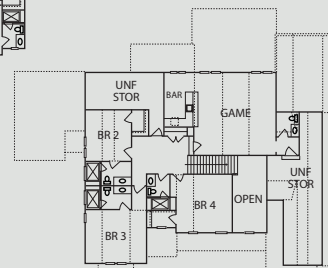
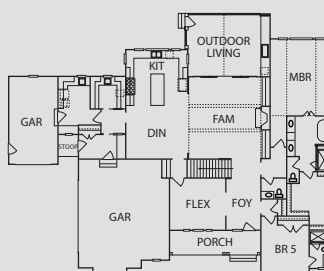
Blue Heron Signature Homes... www.blueheronhomesnc.com

Sales: Christina Valkanoff Realty Group919-345-4538

Plan by: Frazier Home Design

FEATURES

- NGBS certified green high performance home
- Ensuite guest quarters on main level
- Open show kitchen plus adjacent prep kitchen
- Covered outdoor living area
- Large level homesite ideal for a pool
- Outdoor kitchen with built-in stainless steel appliances
- Large media room with fully outfitted bar and dedicated powder room
- 8' high doors on both first and second floors
- Multi-panel stacking sliding glass door link the great room to the outdoor living area
- Master on main level
- Vaulted ceilings in all secondary bedrooms
- 5 bedrooms, 4 full baths, 2 powder rooms



DIRECTIONS: From I-40, take 751 South to Colvard Farms Road, then right on Edward Booth Lane.



COLVARD FARMS

106 Turner Ridge Circle, Durham

5,224 s/f \$1,375,000

Thomas Brent Custom Homes

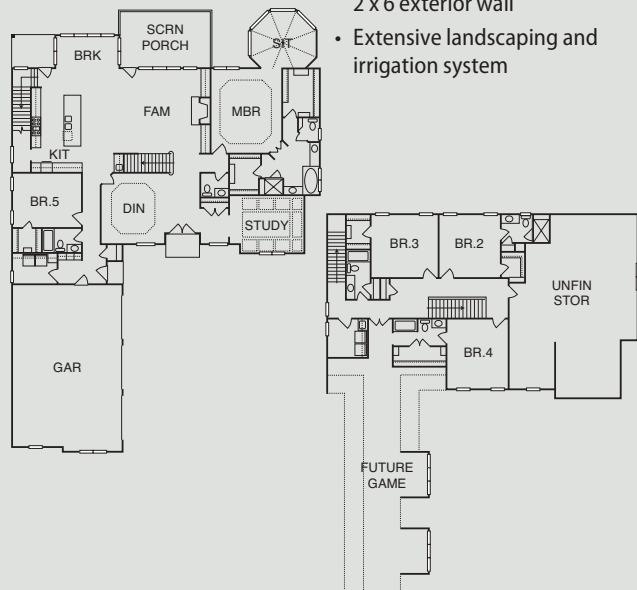
www.thomasbrentcustomhomes.com

Sales: Christina Valkanoff Realty Group 919-345-4538

Plan by: Gene Harrelson

FEATURES

- Two tankless water heaters
- LED lighting throughout house
- Wolf appliances
- Future space above garage (950 square feet)
- Phantom screens on screen porch
- Reclaimed oak used for open shelving and various cabinets and countertops
- Coffin ceiling in study and tray ceiling in master bedroom and dining room
- Spray foam thru entire house
- Sealed crawlspace; 2 x 6 exterior wall
- Extensive landscaping and irrigation system



DIRECTIONS: 751 South past Stagecoach and then take second right into Colvard Farms. Take the first right on Turner Ridge Circle and house is second on the right.



751 SOUTH

1324 Bradburn Drive, Durham

2,913 s/f \$612,000

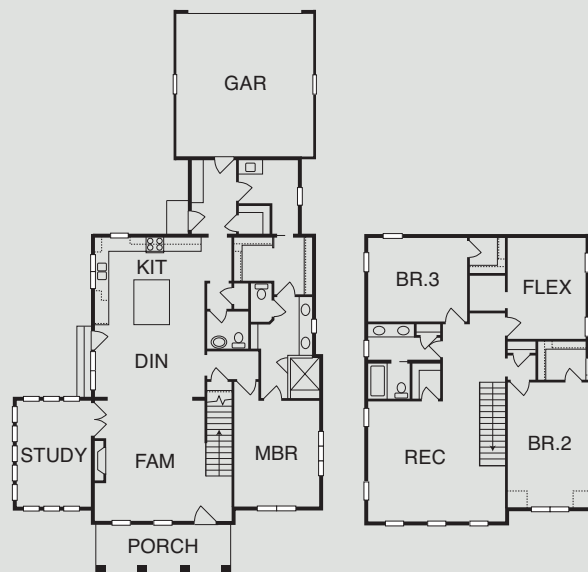
Homes By Dickerson www.HomesByDickerson.com

Sales: Homes By Dickerson Real Estate LLC 919-296-3820

Plan by: Homes By Dickerson

FEATURES

- NGBS and ENERGY STAR® certified
- Second floor lounge with wet bar
- First-floor master suite with laundry room access
- 10' ceilings on first floor
- Site-finished hardwoods on first floor
- Outdoor living
- Custom trim details throughout
- Flex space
- Gorgeous tile and lighting details
- Triangle Builders Guild member



DIRECTIONS: From I-40W towards Durham, take exit 276 and turn left onto Hwy 751. Continue on 751 and turn right onto Excelsior Grand Avenue into the 751 South community. Turn right onto Bradburn Drive and the home will be on your left.



MARVIN 



IF YOU CAN DREAM IT, WE'LL MAKE IT HAPPEN

With BMC, you get the personalized service and local market expertise that only your hometown building supply company can provide. You can count on us to be your professional source for all your new home and remodeling projects, big or small.

BUILD EASIER | BuildWithBMC.com

**WINDOWS & DOORS | DECKING & RAILING | MILLWORK & MOULDING
CABINETS & FINISH HARDWARE | FRAMING & FASTENERS**



RALEIGH SHOWROOM

3000 Yonkers Road
Raleigh, NC 27604
919.828.7471

APEX

1701 N. Salem Street
Apex, NC 27523
919.362.8377

GARNER

12290 Cleveland Road
Garner, NC 27529
919.772.1388

YOUNGVILLE

45 Mosswood Boulevard
Youngville, NC 27596
919.562.6601



751 SOUTH

812 Watercolor Way, Durham

2,237 s/f\$375,200

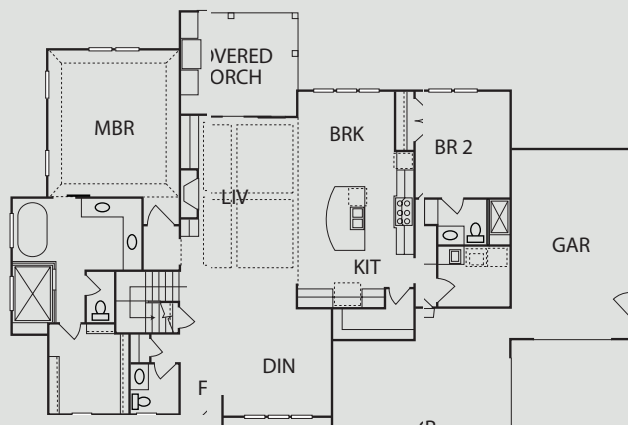
Ryan Homes www.ryanhomes.com

Sales: Ryan Homes 984-329-7850

Plan by: Ryan Homes

FEATURES

- Chef's kitchen island
- Quartz countertop
- Upgraded appliances
- Rear deck
- Upgraded designer features
- Hardwood floors
- 9' ceiling



DIRECTIONS: South on 751 from I-40, right on Excelsior Grand Ave. Turn right onto Watercolor Way.



751 SOUTH

1318 Bradburn Drive, Durham

3,150 s/f\$690,000

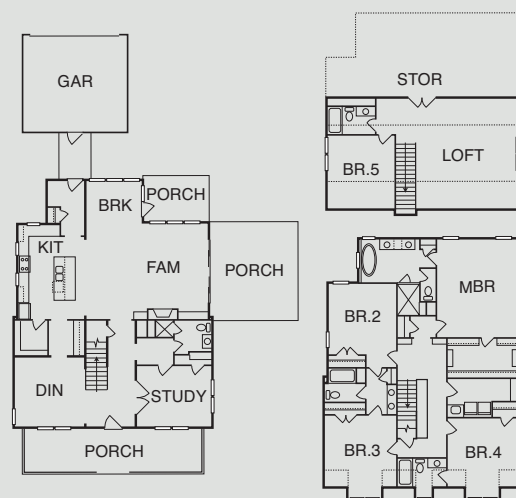
Saussy Burbank www.saussyburbank.com

Sales: Saussy Burbank 919-641-2093

Plan by: KDK Design & Saussy Burbank

FEATURES

- ecoSelect certified
- Custom builder trim detail
- Floor to ceiling built-ins throughout
- Site-finished white oak hardwood floors
- Double sliding glass doorway to oversized screened porch
- Chef-inspired kitchen with commercial grade appliances
- Spa-inspired baths with custom tile, fixtures and shower/tub
- High-end designer light fixtures throughout
- Custom breezeway to detached garage
- Expansive front porch with custom flagstone
- Desirable quartz counters throughout



DIRECTIONS: From RTP, take I-40 to NC-751 S in Durham. Take exit 274 from I-40. Turn left onto NC-751 S. Travel 5 miles on NC-751 S and 751 South community will be on your right. Stay on Excelsior Grand Ave and turn right on Bradburn Drive. Home will be on the left.



D6

HERNDON TRACE

904 Adeline Court, Durham

3,277 s/f\$550,000

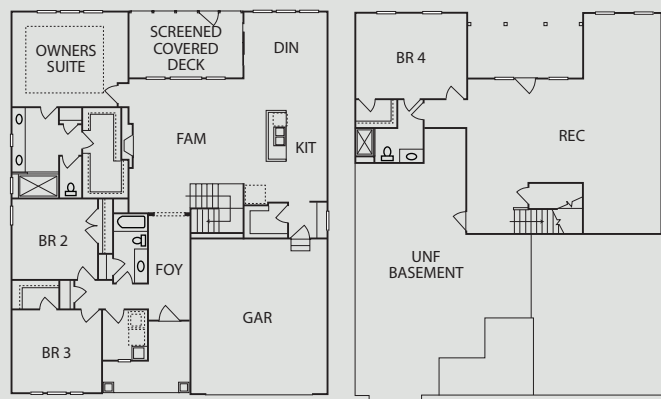
Drees Homes www.dreeshomes.com

Sales: Drees Homes 919-908-9333

Plan by: Drees Homes

FEATURES

- Environments for Living certified
- Conveniently located near Southpoint Mall
- Finished basement with bedroom and rec room
- Open living spaces
- First-floor owner's suite
- Unfinished walk-in storage
- Main level secondary bedrooms
- DreeSmart Energy Conservation



DIRECTIONS: Take I-40 to Exit 276 for Fayetteville Rd. Head South to left on Herndon Rd. Stay straight at Barbee Rd. Community on the right.



D7

GRANDIN TRACE

1023 Pondfield Way, Durham

2,831 s/f\$509,832

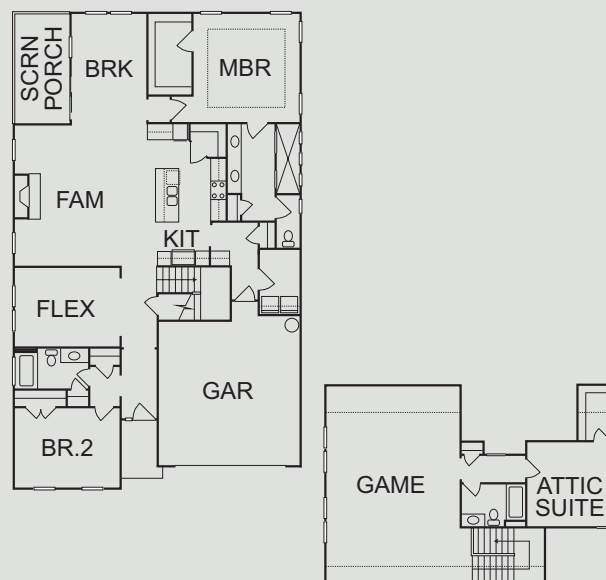
Taylor Morrison www.taylormorrison.com

Sales: Taylor Morrison 919-551-3515

Plan by: Taylor Morrison

FEATURES

- Spacious, recessed first-floor owner's suite
- Two-car garage
- Luxurious walk-in owner's shower
- Second-floor guest retreat
- Relaxing screened porch
- Expansive game room
- Open gourmet kitchen
- Walk-in attic storage
- HOA maintained lawn
- Guest bedroom on main floor



DIRECTIONS: I-40 West to Fayetteville Road, (Exit 276) Turn Left onto Fayetteville Road. Take left at first stoplight onto Herndon Rd. Take Herndon to roundabout at Barbee Rd. At roundabout, go left onto Barbee Rd. Right onto Grandale Drive. Grandin Trace is on your right at the intersection of Huntsman Drive and Grandale Drive in Durham, NC.



ANDREWS CHAPEL

1302 Farm Pond Trail, Durham

1,752 s/f.....\$336,000

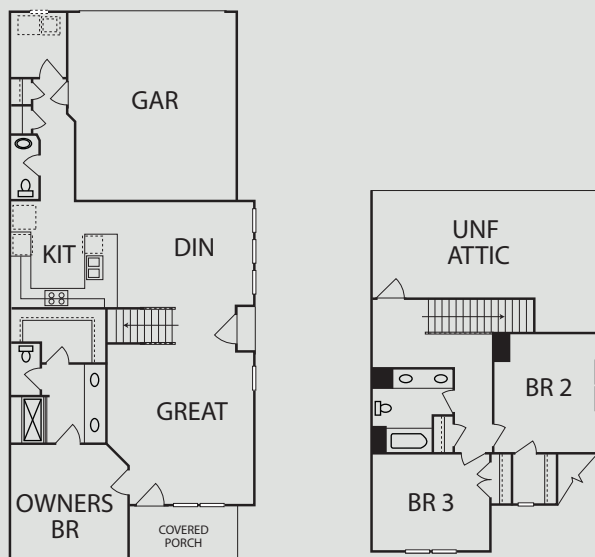
M/I Homes www.mihomes.com

Sales: M/I Homes 877-464-8188

Plan by: M/I Homes

FEATURES

- ENERGY STAR® certified
- Innovative townhome design
- Rare first-floor owner's suite
- Kitchen with large island
- Spacious secondary bedrooms
- Expandable bonus room
- Convenient downstairs laundry
- Two-car alley entry garage
- Maintenance-free living
- 15-year transferable structural warranty



DIRECTIONS: From I-540 E, take exit 4B onto US79 W/Glenwood Ave. Right onto Brier Creek Parkway, right onto Farm Pond. Model is on the right across from the pool.



HUNTLEY

12441 Angel Vale Place, Durham

2,239 s/f\$408,354

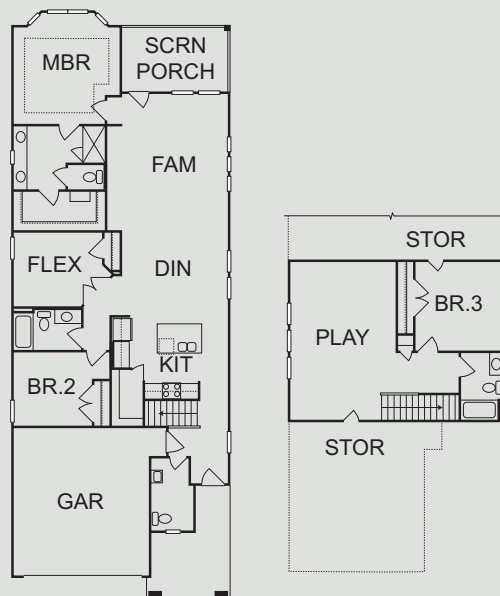
Taylor Morrison www.taylormorrison.com

Sales: Taylor Morrison..... 919-551-3515

Plan by: Taylor Morrison

FEATURES

- Large upstairs loft with storage
- Kitchen with island and farm sink open to dining and living room
- Master suite on first floor with bay window
- Flex room/office on first floor with French doors
- Built-in entertainment center in family room
- Screen porch with additional patio
- Large rear yard
- Second guest bedroom on first floor
- Three full baths
- 8' doors throughout



DIRECTIONS: From I-540 East, take I-540E to US70W/Glenwood Avenue. Turn right on Brier Creek Parkway. Turn right on ACC Blvd. Turn left on Mt. Herman Road. Keep straight through the 4-way stop, and Huntley will be on your right.

TAYLOR MORRISON'S

Available Ranch Plans

Three incredible neighborhoods and the opportunity to find the home that's inspired by you®



Make an appointment today and begin building the home of your dreams! **Call or Text 919-551-3515**

CREEKSIDE AT BETHPAGE

6511 Crown Parkway | Durham, NC 27703
55+ Community*
From the mid \$250s

- 1,294 to 2,425 Sq. Ft.
- 2-3 Bedrooms | 2-3.5 Bathrooms
- 2 to 3-Car Garage
- First floor living with second floor option
- Ranch homes and villa-style townhomes
- AMAZING AMENITIES
- Hemingway Hall, our 13,000 Sq. Ft. Clubhouse | Community Garden | Pool
- Tennis Courts | Fitness Center | Pickle Ball Courts | Bocce Ball | Generous trail system perfectly integrated within natural surroundings

GRANDIN TRACE

1023 Pondfield Way | Durham, NC 27713
From the mid \$300s

- 1,800 – 2,700 Sq. Ft.
- 2-4 Bedrooms | 2-3 Bathrooms
- 2 Car Garage
- 1st floor living with options for second floor
- Lawn and landscape maintenance included in HOA dues

HUNTLEY

12441 Angel Vale Place | Durham, NC 27703
From the mid \$320s

- 1,600 – 2,500+ Sq. Ft.
- 3-4 Bedrooms | 2-3 Bathrooms
- 2-Car Garage
- Lawn and landscape maintenance
- Single story with options for second floor

taylormorrison.com



*For our Age Qualified Communities only: At least one resident of household must be 55 or older, and additional restrictions apply. Some residents may be younger than 55 in limited circumstances. Complete details available. All information (including, but not limited to prices, views, availability, school assignments and ratings, incentives, floor plans, site plans, features, standards and options, assessments and fees, planned amenities, programs, conceptual artists' renderings and community development plans) deemed reliable as of publication date but not guaranteed and remains subject to change daily or delay without notice. Prices may not include lot premiums, options and upgrades. Not an offer in any state where prohibited or otherwise restricted by law. Please see a Community Sales Manager and visit www.taylormorrison.com for details. © August 2019, Taylor Morrison of Carolinas, Inc., NCGCL #76596, AV Homes of Raleigh, LLC, NCGCL #79166. All rights reserved.

**taylor
morrison**

Homes Inspired by You





D10

THE COURTYARDS AT ANDREWS CHAPEL

1007 Havenwood Lane, Durham

2,158 s/f\$551,996

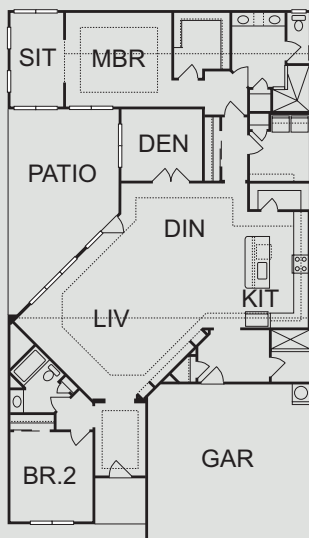
Epcon Communities www.EpconRaleigh.com

Sales: Epcon Communities 919-480-9479

Plan by: James Wentling Architects

FEATURES

- Luxury, ranch home
- Open, light-filled, single-level living
- First-floor owner's suite
- Private, outdoor courtyard
- Deluxe kitchen with island and pantry
- Den (optional bedroom in lieu of den)
- Generous storage space
- Optional sitting room, screened porch or covered porch off owner's suite
- Optional second floor bonus suite addition
- Spacious mud room with optional half bath or dog wash station



DIRECTIONS: From I-40 W, take I-540 E to US-70 W/Glenwood Ave. in Raleigh. Take exit 4B from I-540 E. Take Brier Creek Pkwy to Andrews Chapel Rd.



D11

FENDOL FARMS

1004 White Bark Lane, Durham

2,082 s/f\$385,000

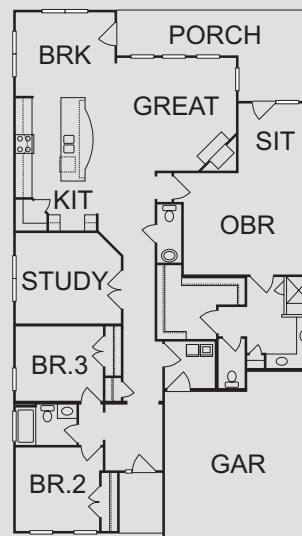
Lennar www.lennar.com

Sales: Lennar 919-465-9420

Plan by: Lennar

FEATURES

- Open ranch style living
- 55+ Active Adult community
- Amenity Center with Clubhouse
- Tennis, pickle ball, hot tub and fire pit
- Fitness center and aerobics room
- Oversized owner's suite
- Flex room for office or study
- Large kitchen
- Two-car garage
- Included lawn maintenance and landscaping
- Large screened porch



DIRECTIONS: Hwy 70 towards Durham, turn right on Leesville Rd, 2 mi to left on Fendol Farms Pkwy, Right on Tamarisk Ln., right on White Bark Lane. Home is on the left in cul-de-sac.



D12

BRIGHTLEAF AT THE PARK

1846 Sandoval Drive, Durham

3,287 s/f\$525,000

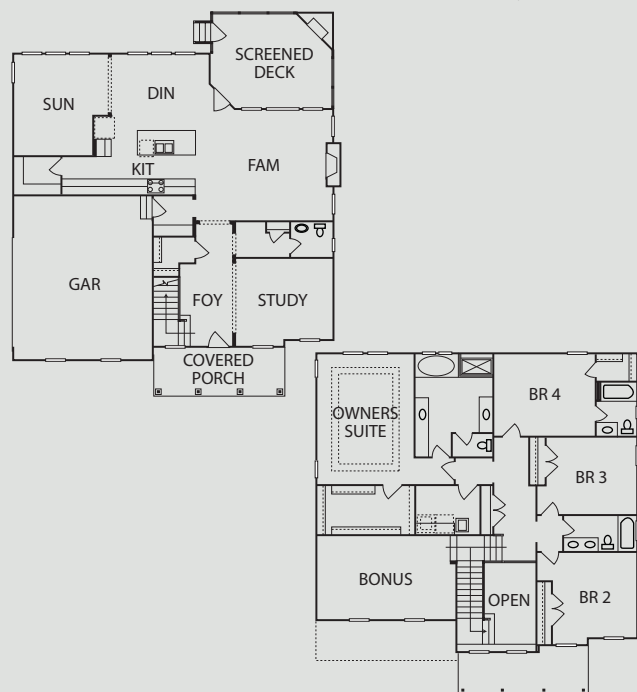
Drees Homes.....www.dreeshomes.com

Sales: Drees Homes 919-596-9513

Plan by: Drees Homes

FEATURES

- Environments for Living certified
- 10' ceilings
- Sunroom
- Outdoor living area
- Abundance of kitchen cabinets
- Custom trim and paint throughout
- Game room
- Private owner's suite
- Guest suite
- DreeSmart Energy Conservation



DIRECTIONS: From Hwy 70, turn on Sherron Road/Miami Blvd. Pass the first Brightleaf entrance. At the next light, turn right onto Northern Durham Parkway. Go to end of road and make a left on to Flat River. New section is on the right.



D13

ELLIS CROSSING

1043 Lippincott Road, Durham

2,529 s/f\$437,809

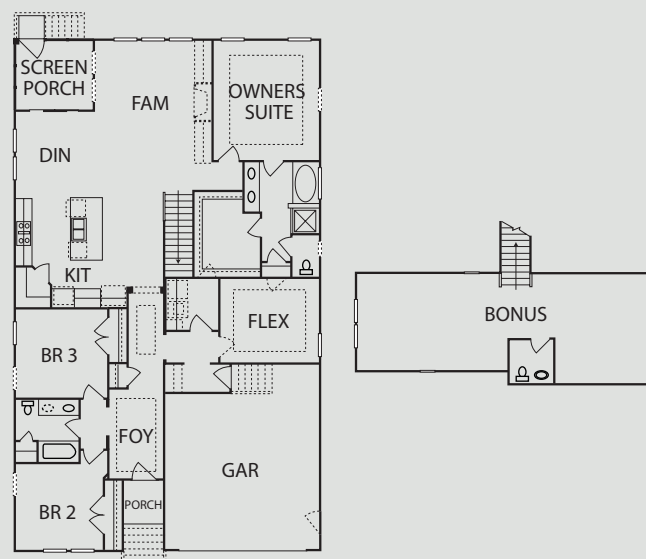
Meritage Homes www.MeritageHomes.com/poh19

Sales: Meritage Homes.....877-203-4644

Plan by: BSB

FEATURES

- Energy Star® certified
- Spray foam insulation
- Home automation suite
- Advanced thermostat
- Spacious owner's suite
- Huge loft
- Flex space on first floor
- Granite countertops
- Luxurious owner's shower with tile surround
- Open kitchen
- Tankless water heater



DIRECTIONS: 1-40 to Hwy 147 North. Take Exit 8 onto Ellis Road. Turn right on Ellis Road. Turn left on Watchorn Dr. Turn right on to Tarsnet Lane. Turn left onto Lippincott Road. Parade home is the second home on the right.



D14

ELLIS CROSSING

1004 Beyer Place, Durham

2,177 s/f.\$449,585

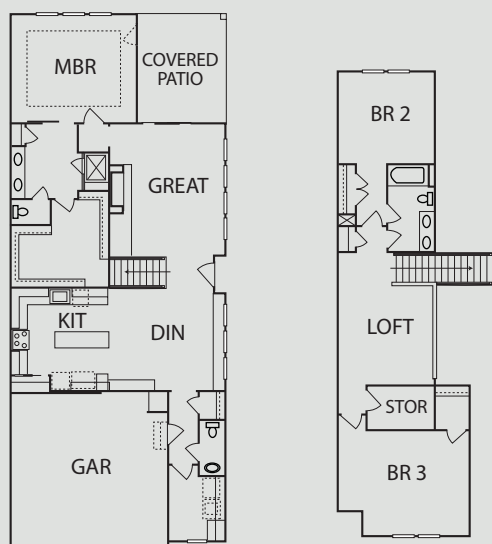
Ashton Woods www.ashtonwoods.com

Sales: Ashton Woods 919-232-0039

Plan by: Ashton Woods

FEATURES

- Kitchen layout with walk-in pantry and breakfast bar
- Dramatic entryway
- Attractive painted brick exterior
- Large covered patio — perfect for entertaining
- First-floor master suite
- Oversized secondary bedrooms
- Tall, vaulted ceilings in dining and family rooms
- End-unit townhome with lots of windows and natural light
- Explore a wide array of neighborhood amenities



DIRECTIONS: From Raleigh I-40 W, travel west on I-40 toward Durham. Use the right two lanes to take exit 279B to NC147N toward Durham/Downtown. Take Exit 8 to Ellis Rd. Turn right on Ellis Rd. Left on Watchorn St. Travel past pool and clubhouse. Left on Beyer Pl.



D15

CRESSET OVERLOOK

3601 Cedarbird Way, Durham

3,619 s/f.\$583,454

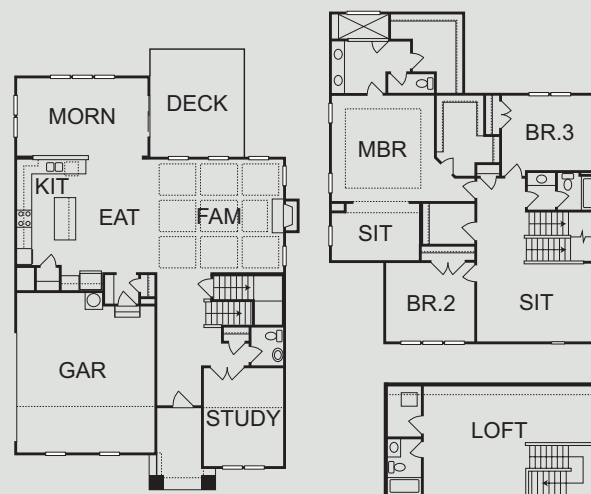
Stanley Martin Homes www.stanleymartin.com

Sales: Stanley Martin Homes 919-842-7136

Plan by: Stanley Martin Homes

FEATURES

- Green Living certified
- 10' ceilings
- Morning room
- Open floorplan
- Office downstairs
- Sitting room in owner's suite
- Second-floor bonus room
- Third-floor finished loft and bathroom
- Sealed and conditioned crawl space
- Large walk-in shower in owner's suite bathroom



DIRECTIONS: From I-40: take exit 270 for US 15-501 N, Drive 1.4 miles, Turn left onto Garrett Road, Drive .9 miles, Turn left onto Hornbill Lane. Model is directly in front of you on Cedarbird Way.



D16

LONGVIEW

7 Galway Glenn Lane, Durham

1,817 s/f.....\$302,885

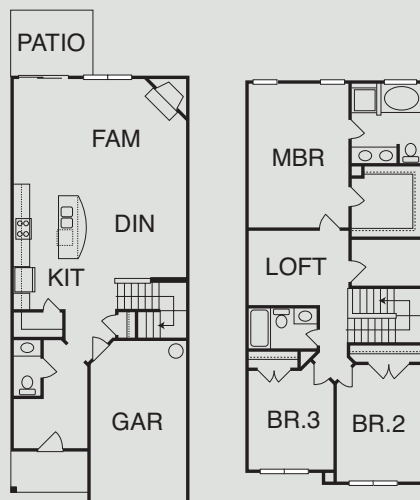
Eastwood Homes..... www.EastwoodHomes.com

Sales: Eastwood Homes 919-539-0917

Plan by: Eastwood Homes

FEATURES

- Loft
- One-car garage
- Large kitchen island
- Walk-in pantry
- Granite countertops
- Gas fireplace
- Oversized walk-in closet in master bedroom
- Garden tub in master bath



DIRECTIONS: From I-540 West, take exit 1A-1B toward Durham. Merge onto I-40 West. Take exit 279B to merge onto NC-147N toward Downtown Durham. Take exit 16B for US 15S/US-501S toward Chapel Hill. Take Exit 108A and turn right onto Morreene Road. Turn left onto Whitfield Road. Turn right onto Galway Glenn Lane. This home is on the left.



D17

LONGVIEW

5 Galway Glenn Lane, Durham

1,732 s/f.....\$292,560

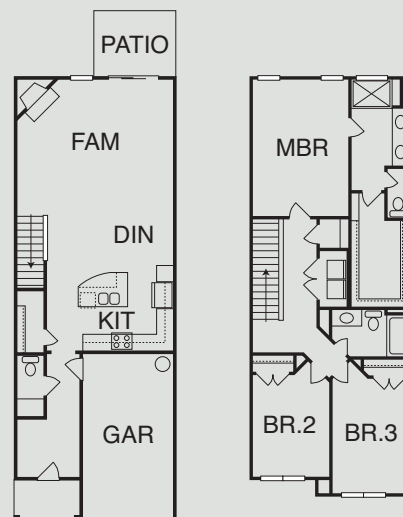
Eastwood Homes..... www.EastwoodHomes.com

Sales: Eastwood Homes 919-539-0917

Plan by: Eastwood Homes

FEATURES

- One-car garage
- Granite countertops
- Lazy Susan in kitchen
- Oversized kitchen island
- Gas fireplace
- Tray ceiling in master bedroom
- Master bath walk-in shower
- Master bath walk-in closet



DIRECTIONS: From I-540 West, take exit 1A-1B toward Durham. Merge onto I-40 West. Take exit 279B to merge onto NC-147N toward Downtown Durham. Take exit 16B for US 15S/US-501S toward Chapel Hill. Take Exit 108A and turn right onto Morreene Road. Turn left onto Whitfield Road. Turn right onto Galway Glenn Lane. This home is on the left.



VALLEY SPRINGS

1104 Valley Rose Way, Durham

2,981 s/f\$635,000

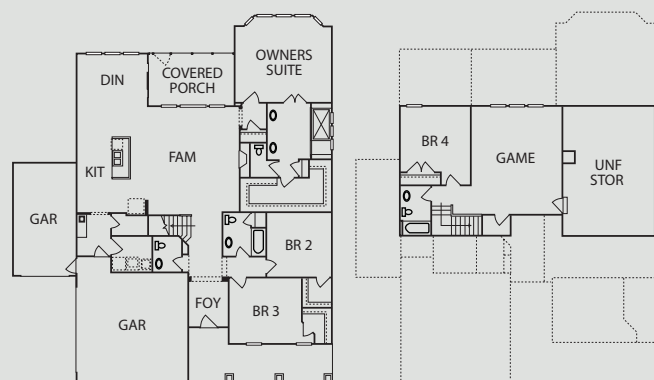
Drees Homes.....www.dreeshomes.com

Sales: Drees Homes 919-309-1125

Plan by: Drees Homes

FEATURES

- Environments for Living certified
- First-floor owner's suite
- Brick wall in kitchen
- Outdoor living area
- Game room
- Custom trim throughout
- 10' ceilings
- Open and spacious plan
- DreeSmart Energy Conservation



DIRECTIONS: US-15 N/US-501 N toward I-85. Take exit Hillsborough Rd exit. Turn left onto Hillsborough Rd. Turn right on Cole Mill Rd. Turn right on Rose of Sharon Rd. Turn left on Valley Springs Rd. Valley Springs will be on the right.



CRYSTAL LAKE AT CROASDAILE FARM

1003 Laurelwood Drive, Durham

3,072 s/f\$625,000

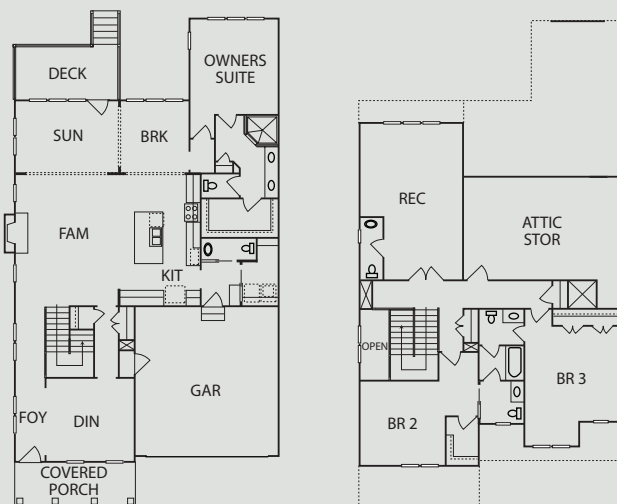
Homes By Dickerson.....www.HomesByDickerson.com

Sales: Homes By Dickerson Real Estate LLC 919-296-3820

Plan by: Homes By Dickerson

FEATURES

- NGBS and ENERGY STAR® certified
- End unit townhome; low-maintenance living
- Covered porch
- First-floor master suite
- Custom trim and details throughout
- Rec room upstairs
- Screen porch and grilling deck
- Two-car garage
- Unfinished storage
- Triangle Builders Guild member



DIRECTIONS: I-85 S/US-15 S to Hillandale Rd in Durham. Take exit 174B from I-85 S/US-15 S/US-70 W and merge on Hillandale Road towards Duke. Make a left onto Croasdaile Farm Parkway, a right onto Trail Wood Drive, and a right onto Laurelwood Drive. The townhome will be on your left.



CRYSTAL LAKE AT CROASDALE FARM

2217 Meadowcreek Drive, Durham

2,142 s/f\$580,000

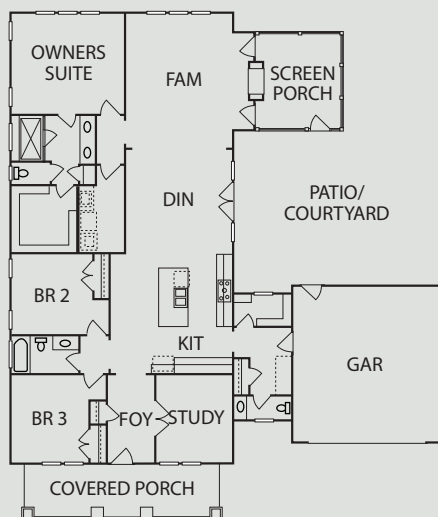
Homes By Dickerson www.HomesByDickerson.com

Sales: Homes By Dickerson Real Estate LLC 919-296-3820

Plan by: Homes By Dickerson

FEATURES

- NGBS and ENERGY STAR® certified
- Ranch floorplan
- Formal study
- Owner's entry with custom lockers
- Covered front porch
- Screen porch with twilight fireplace
- Courtyard patio
- Two-car garage
- Unfinished storage
- Triangle Builders Guild member



DIRECTIONS: I-85 S/US-15 S to Hillandale Rd in Durham. Take exit 174B from I-85 S/US-15 S/US-70 W and merge on Hillandale Road towards Duke. Make a left into the community on Meadowcreek Drive. House will be on your left.



STAGVILLE AT TREYBURN

115 Loblolly Drive, Durham

2,309 s/f\$339,950

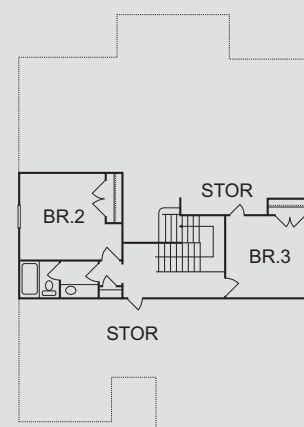
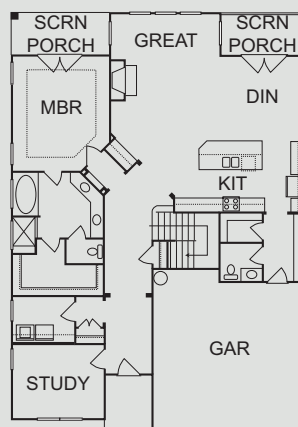
Cimarron Homes www.cimarronhomes.com

Sales: Cimarron Homes 919-943-9445

Plan by: TK Design & Associates

FEATURES

- NGBS and ENERGY STAR® certified
- Hardwood floors throughout first floor
- Two screened porches, each with French doors
- White shaker cabinets with a desert gray backsplash
- Venatino quartz countertops
- 9' drop zone in mudroom, adjacent to pantry and kitchen
- Great room features built-ins, fireplace and lots of light
- Master bedroom, dining room and great room overlooking wooded back yard
- Sealed crawl space and 10-year structural warranty
- Triangle Builders Guild Member



DIRECTIONS: From Durham, take I-85 N to Red Mill Rd. Take left off exit. When you reach Old Oxford Hwy, take a right. At Stagville Rd take a left. Go 1 mile and take left on Loblolly Drive. House will be 100 yards on left.



PLEASANT GREEN FARMS

302 Southernwood Drive, Hillsborough

4,197 s/f. \$1,155,000

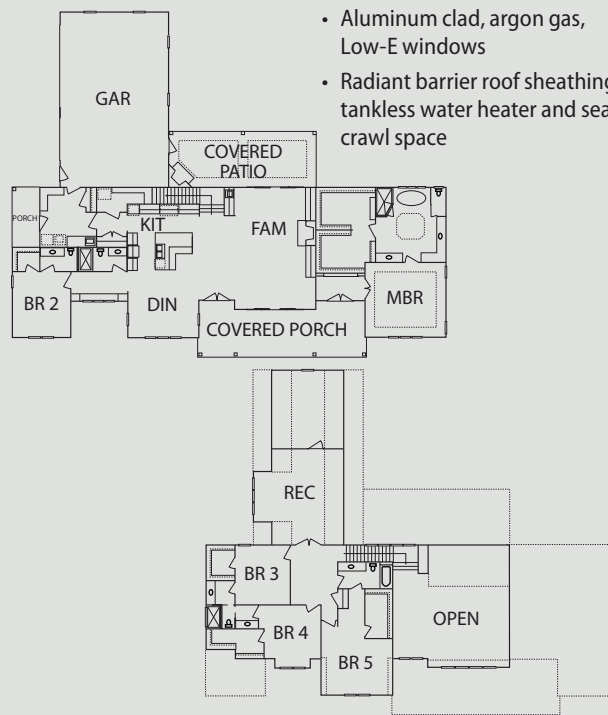
Winslow Homes, LLC. www.WinslowHomes.com

Sales: Peak, Swirles & Cavallito Properties 919-612-3221

Plan by: Winslow Homes

FEATURES

- ENERGY STAR® certified
- Amazing panoramic views
- Master and guest suite first floor
- Reclaimed heart pine floors and custom made heart pine stair treads
- His and Her master custom closets
- Outdoor fireplace and Phantom screens
- Quartz kitchen countertops and backsplash
- Wet bar with beverage cooler
- Aluminum clad, argon gas, Low-E windows
- Radiant barrier roof sheathing, tankless water heater and sealed crawl space



DIRECTIONS: From Historic Hillsborough, take right on King St to St Marys, cross Hwy 70 past Churton Grove, left on New Sharon Church past Fox Hill Farms. Take a left on Schley at Underwoods, Pleasant Green Farm is 1 mile on right.



FIORI HILL

706 Lorentello Circle, Hillsborough

1,607 s/f \$313,300

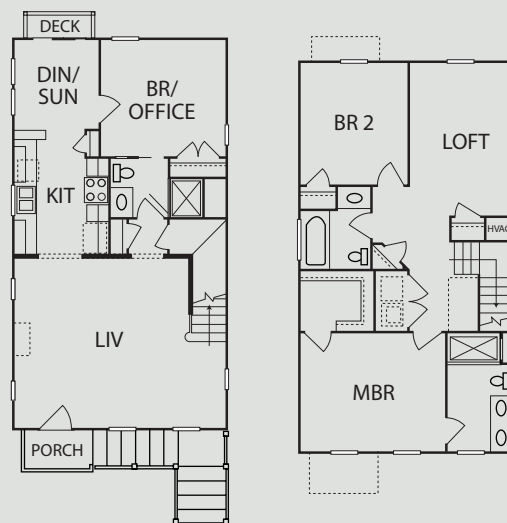
Peloquin Construction ... www.peloquinconstruction.com

Sales: Weaver Street Realty 919-929-5658

Plan by: Peloquin Construction

FEATURES

- ENERGY STAR® certified
- CoHo inspired intentional living
- Pocket neighborhood
- Green custom-built homes
- Multi-use common house
- Green spaces and gathering places
- Nature trails to river walk
- Superior energy efficiency
- Community garden and shed
- Solar panel ready metal roofs
- Local builder and vendors



DIRECTIONS: From Hwy 70 Bus East, turn left on Quincy Road, then left on Maple Glen Dr. to Fiori Hill entrance. Turn right on Fiori Hill Dr. Take the first left onto Lorentello Circle and 706 will be the second house on your right.



HARMONY AT WATERSTONE

524 Great Eno Path, Hillsborough

2,104 s/f\$284,560

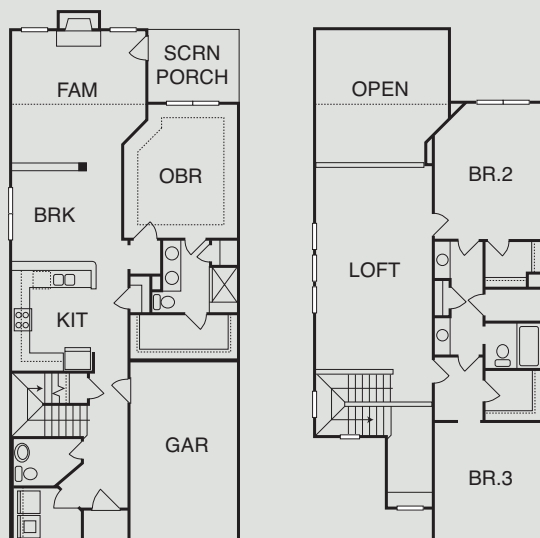
Lennar www.lennar.com

Sales: Lennar 919-465-9420

Plan by: Lennar

FEATURES

- Beautiful entry with two-story foyer
- Owner's suite on the first floor
- Hardwood stairs with open railing
- Gourmet kitchen with quartz countertops
- Upgraded features including maple cabinetry
- Spacious two-story family room with fireplace
- Second floor has large loft with multiple windows
- Jack and Jill bathroom
- Large 12 x 24 tile in laundry, bath and owner's suite
- End unit with additional window overlooking beautiful common space



DIRECTIONS: Take I-40 W to Old Chapel Hill Hillsborough Rd/Old NC 86 in Hillsborough. Take exit 261 from I-40 W. Merge onto Old Chapel Hill Hillsborough Rd. Turn right onto Waterstone Dr. Across from UNC Hospital, enter community by taking a left on Great Eno Path.



THE MEADOWS

313 Anaconda Trail, Mebane

2,253 s/f\$270,000

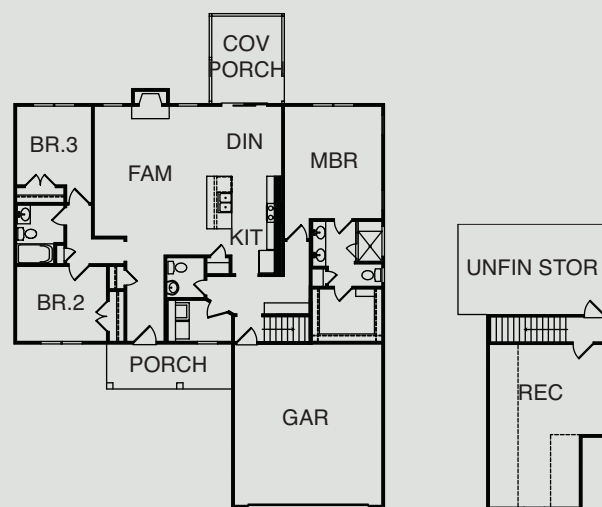
Capitol City Homes www.capitolcity-homes.com

Sales: The Jim Allen Group 919-880-9882

Plan by: Dynamic Design Group

FEATURES

- Covered porch
- Finished rec room on second floor
- Spacious floor plan
- Fireplace with custom trim above
- Granite countertops in kitchen
- Designer pendants above island in kitchen
- Stainless steel farmhouse sink in kitchen
- Accent shower wall in master bathroom
- 5' high wainscoting in foyer
- Accent trim wall in master bedroom
- Designer trim wall in master bedroom

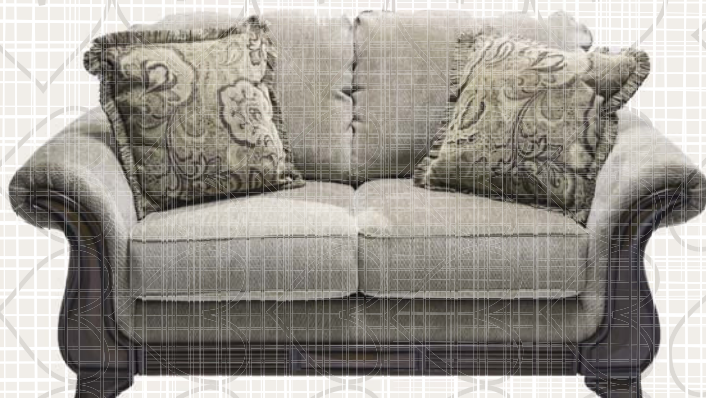


DIRECTIONS: Head northwest on I-40 W/I-85 S. Take exit 157 for Buckhorn Rd. Turn left onto Buckhorn Rd. Turn right onto W Ten Rd. Turn left onto Bowman Rd. Turn right onto Campaign Drive. Turn right onto Anaconda Trail. Parade home is on the left.



ReStore

share the *Love* (seat)



Schedule a Free Pick-up for Your Tax-deductible Donations

919.354.0892 (Durham)

919.548.6910 (Chatham)

The Habitat for Humanity ReStore is a nonprofit home improvement store that accepts donations of new or gently-used furniture, home decor, building supplies and more. Items are sold at a great price and 100% of the proceeds go directly to build more hope and homes—locally, and around the world.

THE THRIFT STORE WITH A MISSION: DONATE, SHOP, VOLUNTEER

5501 Durham-Chapel Hill Blvd, Durham
www.orangehabitat.org

467 West St, Pittsboro
www.chathamhabitat.org



Brian Sawyer, inc.

CUSTOM HOMES ■ RENOVATIONS ■ ADDITIONS ■ STEEL BUILDINGS

919.422.5656

RALEIGH
DURHAM
CHAPEL HILL
HOLLY SPRINGS

Thoughtfully designed
homes with timeless detail
and craftsmanship.



SAUSSY BURBANK

SAUSSYBURBANK.COM

FIVE TO FALL FOR

The Parade of Homes at Briar Chapel

WEEKENDS 12-5PM
SEPTEMBER 28-OCTOBER 13

Five homes in one award-winning community. Named "Best Neighborhood in Chapel Hill" for the fourth year in a row. *Homes from the \$240,000s-\$700,000s+.*


BRIAR CHAPEL
— BY —
NEWLAND®

919.951.0700
BRIARCHAPELNC.COM



Newland is the largest private developer of mixed-use communities in the United States. With our partner, North America Sekisui House, LLC, we believe it is our responsibility to create enduring, healthier communities for people to live life in ways that matter most to them. newlandco.com | nashcommunities.com



EQUAL HOUSING OPPORTUNITY. NNP-Briar Chapel, LLC ("Fee Owner") is the owner and developer of the Briar Chapel Community ("Community"). Certain homebuilders unaffiliated with the Fee Owner or its related entities are building homes in the Community ("Builder(s)"). Fee Owner has retained Newland Communities solely as the property manager for the Community. North America Sekisui House has an interest in one of the members in Fee Owner. See www.briarchapelnc.com for full terms of use. Actual development may vary from developer's vision. No guarantee can be made that development will progress as described. 2019 © Briar Chapel. All Rights Reserved.