



2019

Missouri State University
Foundation

Annual Report



At Missouri State, we discovered
what it meant to be invested in
something bigger than ourselves.

Here, we learned how to make a promise
and then live that commitment fully.

We learned to lead, not with
self-importance, but with
humility and intention.

Here, we found our voice
and we will make it heard.

**TO FOSTER PURPOSE, TO BUILD INTEGRITY,
TO INSPIRE OUR CURRENT AND FUTURE ALUMS,
WE MAKE OUR **MISSOURI STATEMENT.****



Missouri State University Foundation 2019 annual report

Publisher: Missouri State University office of editorial and design services

Director of editorial and design services: Stacey Funderburk

Annual report managing editor: Juliana Goodwin

Annual report art director and designer: Abby Isackson

Content manager and approver: Stephanie Smith

Staff photographers: Bob Linder, Jesse Scheve, Kevin White

Contributing writers: Kevin Agee, Abigail Blaes, Nicki Donnelson, Michelle S. Rose, Lauren Stockam, Emily Yeap, Tori York

Office of Development and Alumni Relations

W. Brent Dunn, *Vice President for University Advancement*

Lori Winters Fan, *Executive Director of Alumni Relations*

Wendy Ferguson, *Executive Director of Development*

Denise Kettering, *Director of Advancement Services*

Alison Harper, *Director of Annual Funds*

Jacqui Coones, *Director of Prospect Management and Research*

Stephanie Smith, *Senior Director of Donor Relations and Special Events*

Kelsey M. Menefee, *Assistant Director, Donor Relations and Special Events*

Debbie Branson, *Associate Director of Alumni Relations*

Shellie L. Jones, *Assistant Director of Alumni Engagement*

Candice Wolf, *Assistant Director of Alumni Activities*

Angela Pinegar, *Assistant Director of Advancement Services*

Stephanie Matthews, *Director of Corporate and Foundation Relations*

Patty Ingle, *Director of Development*

Matt McDonough, *Director of Development*

Keri McKee, *Director of Development*

Sophie Pierpoint, *Director of Development*

Karl Schmidt, *Director of Development*

Lisa Clark, *Director of Planned Giving*

Kerry Dickerson, *Senior Director of Athletics Development*

Callie Carroll, *Director of Athletics Development*

Jordan E. Taylor, *Assistant Director of Athletics Development*

Phone: 417-836-4143

Fax: 417-836-6886

Email: Foundation@MissouriState.edu

Email: Alumni@MissouriState.edu

Heather Kamps, *Director of Development,
Missouri State-West Plains*

Amber Carr, *Assistant Director of Development,
Missouri State-West Plains*

Phone: 417-255-7240

Fax: 417-255-7241

Email: Development@wp.MissouriState.edu

Missouri State University Foundation Board of Trustees executive committee

Gordon Kinne, *chair, Springfield*

L. Joseph Carmichael, *vice chair, Springfield*

Bonnie O. Campbell, *Houston, Texas*

John D. Foster, *Springfield*

Robert A. (Tony) Foster, *Springfield*

Karen L. Horny, *Springfield*

Mark L. McQueary, *Springfield*

Mary H. Schrag, *West Plains, Missouri*

James H. Wilson, *Springfield*

Michael H. Ingram, *immediate past chair, ex-officio, Springfield*

Clifton M. Smart III, *president, Missouri State University, ex-officio, Springfield*

Beverly S. Miller, *Board of Governors, Missouri State University,
ex-officio, Lebanon, Missouri*

Stephen C. Foucart, *treasurer, ex-officio, Springfield*

W. Brent Dunn, *executive director of the Missouri State University Foundation,
ex-officio, Springfield*

Cindy R. Busby, *secretary, Springfield*

Phone: 417-836-4143

Fax: 417-836-6886

Email: Foundation@MissouriState.edu

The Missouri State University Foundation annual report is published once a year by Missouri State University, 901 S. National Ave., Springfield, MO 65897

Postmaster: Send address changes to Missouri State University Foundation 901 S. National Ave., Springfield, MO 65897

Table of contents

Fiscal Year 2019.....	4
McQueary family “transformational” gift	8
Volunteer engagement	12
Bears in the know.....	14
Greenwood into the future	18
MarooNation Ball tradition continues	22
Any given child program	28
Leaving a legacy.....	30
West Plains — Shaw family invests in the community	34
Foundation Board of Trustees members list.....	36
Alumni Association Board of Directors members list	37
The Founders Club members list.....	38
The Founders Club Medallion honorees.....	48
The Bears Fund members list.....	52
Missouri State University Foundation information.....	56



Supporters donated

\$20,083,060

to Missouri State in
fiscal year 2019

Gifts were received from

20,369

supporters

≈ \$346 MILLION

has been raised since the
foundation began operation
on January 13, 1987





Foundation gifts surpass \$20 million for second consecutive year

2019 donations provide crucial support for MSU.

What would you do with more than \$20 million?

Missouri State University can answer that question, thanks to the generosity of alumni and friends.

They donated \$20,083,060 to the MSU Foundation in fiscal year 2019.

Donations to the foundation support student scholarships and programs, faculty research and facilities enhancements.

This is the second year in a row gifts surpassed \$20 million.

Another \$4.2 million in deferred gift commitments were established in FY19.

“ Missouri State University would not be the university we are today without our donors. Private support has helped us improve our campus and provide more opportunities for students. Thank you for believing in us.”



Clif Smart

President of Missouri State University





HOW YOUR GIFTS WILL AFFECT STUDENTS AND CAMPUS

More than 20,000 donors like you contributed to reach more than \$20 million.

These gifts support student scholarships, academic programs, faculty research, student life and facilities enhancements.

You have allowed Missouri State to build some absolutely amazing new structures, upgrade current buildings, and, most importantly, make sure we meet the needs of our students and the community. The impact of your support is everywhere.

When you give, you:

- Change lives, removing financial barriers to education and allowing the best, brightest, and most deserving students to attend college.

- Create more leaders, from teachers to scientists, health care providers to small business owners, politicians to not-for-profit CEOs.
- Contribute to the next generation of good citizens.
- Strengthen our community and build the future of our state and nation.

WE CAN'T THANK YOU ENOUGH!

Private support has never been more important to the success and growth of the university.

These gifts speak volumes about the loyalty and commitment of Missouri State University supporters.

Every gift, no matter the size, transforms Missouri State University.

We cannot thank you enough for your investment in the next generation of Bears.

“The money we received this year is crucial to the continuing development of the university. We are grateful for the continued support and look forward to bettering the MSU experience for everyone who comes through our campus.”



Brent Dunn

Executive Director of the Missouri State University Foundation and Vice President of University Advancement

“Serving with the wonderful staff, alumni and friends of MSU while working on foundation board issues, has been eye-opening. So many lives are touched by the work we all do together. These students will make a difference in the world.”



Gordon Kinne

1975 alumnus, chair of the Missouri State University Foundation Board of Trustees

17

undergraduate
programs

21

graduate
programs

6

graduate certificate
programs





McQueary family makes “transformational” gift

The College of Health and Human Services has been renamed in honor of the family’s support, which will go toward classrooms, scholarships and support for faculty.

Health care is one of the fastest growing industries in the United States. And it’s one of the industries in Missouri with the biggest gap between demand and qualified workers.

A significant gift from the McQueary family will help close this gap.

Missouri State University announced in October that the College of Health and Human Services has been renamed in honor of the McQueary Family.

“This transformational gift will allow the McQueary College of Health and Human Services to grow to better meet the demand for skilled health care employees in southwest Missouri,” said former Dean Helen Reid.



How this gift will help

The McQueary College of Health and Human Services offers 17 undergraduate programs, 21 graduate and six graduate certificate programs.

The McQueary gift will fund:

- Addition of a large lecture room/classroom to the McQueary Family Health Sciences Hall.
- Additional student scholarships for the college.
- Support for faculty within the college.

“We all know that the health care needs of our community and our state are growing exponentially,” said Dr. Fred McQueary. “Everywhere you look, the demand far outstrips the supply. The aging of us baby boomers means we are looking at more, older, sicker Americans in the very near future.”

McQueary noted more than 20 percent of the nation’s job growth in the past two years was in the health care field. Additionally, 34 percent of registered nurses in Missouri are over the age of 55.

“We have to fill these positions and expand our health care workforce to meet the projected increasing needs.”

Over the years, the McQueary family has made multiple gifts to different areas of the university, including scholarships, athletics, Juanita K. Hammons Hall for the Performing Arts, Greenwood Laboratory School, the Child Development Center, Tent Theatre and the Pride Band. They have also made previous gifts to the colleges of Arts and Letters, Business, and Health and Human Services.

“Members of the McQueary family have been friends of Missouri State University for many years,” said

President Clif Smart. “Many members of the family have also been members and leaders of university boards and committees.

“This family has touched many, many lives. We’re grateful for their long-term support of Missouri State.”

About the McQueary family

William M. McQueary started a family business in the early 1900s when he opened a drugstore on the corner of Madison and John Q. Hammons Parkway. William McQueary’s sons, William Les and Frederick Gordon McQueary, then founded McQueary Brothers Drug Company in 1924.

The McQueary family’s legacy of giving was inspired by Les and Jennie McQueary, who enjoyed Missouri State



“In a very few years, the students here today will be taking care of us. We want and need them to become great providers of care. As a family, I know we all appreciate the opportunity to help them be the very best they can be.”

Dr. Fred McQueary

athletics. The couple’s children, Fred M. McQueary and the late William T. “Bill” McQueary, served as the first co-chairs of the Bears Fund in 1982.

Fred and Ramona McQueary and Bill and Shirley McQueary, and their families, have continued the long tradition of support of Missouri State University.

In 2007, the McQuearys were recognized for their multigenerational involvement with MSU when they were awarded the Bronze Bear award.

McQueary College of Health and Human Services academic units

- Biomedical sciences.
- Communication sciences and disorders.
- Kinesiology.
- Nursing.
- Nurse anesthesia.
- Occupational therapy.
- Physical therapy.
- Physician assistant studies.
- Psychology.
- Public health.
- Social work.
- Sports medicine and athletic training.

The college also houses the:

- Learning Diagnostic Clinic.
- Speech, Language and Hearing Clinic.
- Physical Therapy Clinic.
- MSU Care Clinic.
- Center for Research and Service.

Network with leaders, doers and influencers. Connect with new Bears.

MarooNation Volunteer Engagement Forum set for April 4, 2020

Missouri State University relies on the talents and energy of volunteers who believe in the power higher education has to make our world a better place. Our MarooNation volunteers are a powerful network of leaders, doers and influencers.

On April 4, 2020, Missouri State will host the next MarooNation Volunteer Engagement Forum for alumni and friends to:

- Connect with Missouri State leaders.
- Lead the way for fellow Bears.
- Engage with the next generation of citizen scholars.

As a part of the forum, volunteers will experience campus life through the lens of Missouri State's newest Bears during Admitted Student Day. The campus community will be teeming with new Bears and their family members. The spirit and excitement of new college students touring academic facilities and interacting with faculty is truly inspiring.



Join us at the forum
April 4, 2020



MarooNation.MissouriState.edu/Forum2020



417-836-6666






On the campus of Missouri State University





Celebrate Bears of Distinction April 3, 2020

The forum also includes an opportunity to honor alumni and friends of Missouri State during the Bears of Distinction reception, dinner and awards ceremony.

-  Alumni.MissouriState.edu
-  417-836-5654
-  On the campus of Missouri State University

Become a Bear mentor

- Engage with current Missouri State students through our volunteer opportunities.
Alumni.MissouriState.edu/Volunteer
- Dinner with Eight Bears – Host a meal with students. Share your expertise and inspire students for life after college.
MissouriState.edu/DinnerWithEightBears
- BearTalks – Volunteer to be a speaker. Share your talents and serve as a resource for student groups in your area of expertise.
MissouriState.edu/BearTalks
- International Friends – Help an international student adjust to a new culture and country while creating life-long memories.
MissouriState.edu/InternationalFriends

Want to attend Bears in the Know?

WHEN: See program dates in story text. Lunch will be served at approximately 11:30 a.m., followed by the program at noon.

WHERE: Turner Family Hospitality Room, first floor of the Kenneth E. Meyer Alumni Center, 300 S. Jefferson Ave.

COST: Complimentary for members of The Founders Club. Otherwise, tickets are \$10 per person per luncheon or \$50 for the series.

PURCHASE TICKETS:



MissouriState.edu/
BearsInTheKnow



Stephanie Smith,
417-836-4143

Who is Gen Z?

WHAT IS IMPORTANT TO THEM- RELATIONSHIPS

- Make friends with those who share their values and hobbies
- Playing connect across distances
- Dating sites/apps are the norm
- Flirting
- How to ask someone out
- classes



Missouri State
UNIVERSITY

13



Enhance your MSU connections.
Join the discussion.

Be a Bear in the Know

Bears in the Know is a luncheon series hosted by the Missouri State University Foundation in partnership with Arvest Bank.

At each lunch, you'll learn from expert Bears about topics in their fields. The discussions connect supporters and friends like you to the university.

Thank you to Bears in the Know sponsor Arvest Bank!

“Bears in the Know provides vital education and connections among MSU students and faculty, alumni and the community at large. We feel this event holds one of our own values true, being centered on community, and we are proud to be a sponsor.”

Brad Crain
Arvest Bank President





UPCOMING EVENTS

NOV. 6, 2019

MSU's Partnership in Regional Planning

MSU's Center for Resource Planning and Management has served as the administrative agent for the Southwest Missouri Council of Governments, or SMCOG, for more than 30 years. Learn how MSU staff, students and faculty work with SMCOG to oversee long-range planning and development for southwest Missouri.

Presenter: Jason Ray, director of the Center for Resource Planning and Management/ executive director of the Southwest Missouri Council of Governments

JAN. 22, 2020

"The timber supply is simply inexhaustible:" The Historical Archaeology of Lime Production and Deforestation in Southwest Missouri

The lime industry has had an effect on deforestation in the Ozark region of Southwest Missouri. Learn about a research project conducted in Greene County. Hear the goals, methods and results of the ongoing study, and consider the implications for broader understanding of environmental and social changes in the Missouri Ozarks.

Presenter: Dr. Elizabeth Sobel, professor of anthropology and anthropology program coordinator; Dr. F. Scott Worman, assistant professor of sociology and anthropology

MARCH 25, 2020

Transforming Drones From Flying Cameras to Scientific Tools for Managing the Natural Resources of the Ozarks

Student and faculty researchers at MSU are employing drones to tackle questions and develop new methodologies in a variety of disciplines. Find out how agriculture, the geosciences, ecology, mass communication and other fields are being revolutionized by drone technologies.

Presenter: Dr. Toby Dogwiler, department head and professor of geography, geology and planning



Connect with Missouri State

We'd love for you to join us at any of the events we schedule throughout the year. Here are a few you may consider. More items are added to our calendars each month.

- Nov. 3:** Beijing, China, alumni gathering
- Nov. 8:** Veterans Day Breakfast
- Nov. 21:** Kansas City pre-holiday party
- Nov. 21:** St. Louis MaroonNation Thanks4giving
- Nov. 23:** MaroonNation South Carolina reception
- Dec. 7:** Washington, D.C., alumni gathering at the Embassy of Kazakhstan
- Feb. 15:** St. Pete, Florida, alumni gathering
- Feb. 16:** Naples, Florida, alumni gathering
- Feb. 29:** Kansas City, Missouri, alumni gathering at the Mavericks Ice Hockey Game
- March 24:** Giving Day/Missouri State Birthday Celebration
- Aug. 8:** Sneaker Soiree
- Oct. 16-17:** Homecoming

MAY 6, 2020

Ozarks Public Broadcasting

Ozarks Public Television and KSMU Radio deliver PBS and NPR programming to the Ozarks. They serve the public with local news, entertainment and educational content. Learn about the mission and work of Ozarks Public Broadcasting.

Presenter: Tammy Wiley, general manager, KSMU Radio Network and OPT; Rachel Knight, assistant general manager, KSMU and OPT

JULY 8, 2020

Journagan Ranch Cattle Operations

Journagan Ranch, part of MSU's William H. Darr College of Agriculture, is home to the largest herd of purebred Herefords owned by a university in the nation. Learn about the day-to-day operations of raising cattle, from breeding to marketing, and how the ranch blends education, research and conservation.

Presenter: Dr. Ronald Del Vecchio, dean of the Darr College of Agriculture; Marty Lueck, Journagan Ranch manager; Justin Sissel, farm operations manager

-  Alumni.MissouriState.edu
-  Alumni@MissouriState.edu
-  417-836-4143



Committee steers Greenwood into the future

The laboratory school's growth signifies a dedication to improving student experiences.

Greenwood Laboratory School will be seeing a lot of positive change in the next few years. A multimillion-dollar expansion is scheduled for completion in fall 2020.

"There is definitely a need for facility improvement as the school offers more opportunities for students," said Darla Rosen, member of the Greenwood expansion steering committee.

The expansion will include a 21,000 square-foot multipurpose center housing a new gymnasium and a performance stage.

"The current Greenwood building is just over 50 years old," Rosen said.

This expansion project signals a new era for the K-12 laboratory school.

The steering committee has been one of the biggest influences in getting the expansion project moving forward.

"I felt strongly that committing to the steering committee was a way to give back to my children, MSU and the community," Rosen said. "Greenwood has served so many families in Springfield for more than 110 years. Supporting this cause has been rewarding and gratifying to me and my family."

The steering committee – nicknamed the "proud Greenwood parents" – was established in 2014.

"We all firmly believed in the opportunity and necessity to improve facilities in order to ensure Greenwood would be around for the next generations," Rosen said.

The multipurpose building construction is now underway.

Rosen has three children at Greenwood. The fourth, 10th and 12th grade students are third-generation Greenwood students. Their father and grandfather are former Greenwood students.

"It has been a great learning environment for each of them," Rosen said.

Keeping generations of Corrys in the Greenwood family

The Corry family has a long history with Greenwood Laboratory schools. Chris (Corry) Litherland and her four siblings are all former students of Greenwood. When asked to describe Greenwood, Dave Litherland, Chris' husband, responded with one word: Family.

Dave and Chris have continued to keep Greenwood in the family.

"We discussed all the possible areas of the country where we might move to raise our family," Dave said.

They chose the familiarity of Springfield and the education Greenwood could offer their kids. "Having our children educated at Greenwood played a significant role in drawing our family back to my wife's roots in Springfield," Dave said.

At Greenwood, their children are able to have the same enriching experience their mother, aunts and uncles had.

"Greenwood may appear small in size, but it is precisely that which allows for it to accomplish so much with its students," Dave said.

Because of the small size, it's typical for Greenwood students to be involved in multiple sports, student government, bands, clubs and community volunteerism. There is a never-ending stream of activities to keep students engaged and challenging academics to help students grow.

Growth feeds potential

The Corry family wanted to give back to the school that had given so much to them. They're invested in getting the expansion project off the ground.

"To me, this project offers a wealth of growth opportunities in our programs and Missouri State," Dave said. "The experiences visiting students have while on campus will put in full view the facilities and opportunities that are available to them close to home at Missouri State. That's a triple win for Greenwood, MSU and Springfield."

Throughout the expansion project, the Corry family plans to support Greenwood through every stage.

"Our family will continue to be involved and supportive of Greenwood even after our last child graduates in four years," Dave said. "We believe it is a very special place that performs an important role in Springfield."

They have big dreams for the future of Greenwood and hope the doors stay open for generations to come.

"We want Greenwood to continue to offer a unique educational opportunity that helps to draw to Springfield the new families who are searching for a great place to raise and educate their children," Dave said.



Cook and Daugherty families team up to benefit Greenwood expansion

The Cook Family Foundation and the Daugherty family recently contributed to the new Greenwood Laboratory School multipurpose center.

“Our children attend Greenwood and because of their love of the school, we felt compelled to give back to the school that is giving them so much,” said Paula Cook Daugherty, vice president of Loren Cook.

About their support

The Cook Family Foundation and the Daugherty family helped fund the stage and the Hall of Fame Wall features of the expansion project.



“The expansion is something our family feels is going to allow for many new amazing things to take place within the walls of Greenwood,” Cook Daugherty said.

One of those amazing things includes students taking pride in their school.

“Students, parents, teachers and administration are going to experience a new level of excitement and pride once the project is complete,” Cook Daugherty said.

Into the future

Once this project is complete, the Cook Family Foundation and the Daugherty family want to see Greenwood grow.

“In the next few years, we would love to see an investment and commitment in updating and improving the existing building, including classrooms, offices, cafeteria, the exterior and more,” Cook Daugherty said. “The school excels

academically, and it would be nice to see this level of excellence within the building itself.”

Cook Daugherty also hopes that more business classes could be offered in the future.

“Business knowledge not only benefits those that want to pursue it as a career, but it also provides skills and knowledge in managing life outside the workplace,” Cook Daugherty said.

**Join us in the
roaring '20s!**

We'll be puttin' on
the Ritz for our next
maroon spirit in black tie.

**ST. LOUIS
JAN. 18, 2020**

Palladium Saint Louis

**KANSAS CITY
FEB. 1, 2020**

Hilton President

**SPRINGFIELD
MAY 29, 2020**

The Old Glass Place





We are

Having a Ball!

MarooNation Ball, Missouri State's signature gala in St. Louis, Kansas City and Springfield are going strong and supporting Missouri State Bears from across the state.

The goal of each ball is to raise scholarship support for Missouri State University students while also strengthening the university's profile and advancing the university's mission in public affairs.

The MarooNation Ball has proven to be a successful social and networking event for organizations, companies and individuals who attend. It's a fun-filled night of celebration in the name of Missouri State, cocktails, dining and dancing.

THANK YOU TO OUR 2019 SPONSORS!

MarooNation Ball would not have been possible without the support of these businesses and individuals.

St. Louis

Jan. 19, 2019

PRESENTING SPONSOR

McBride and Son Homes



MAROON AND WHITE SPONSOR

BKD CPAs and Advisors

Great Southern Bank

The Cypress

Groundwork

Midwest BankCentre

Metro Lighting

Moneta

Missouri State University Baker Bookstore

Missouri State University
College of Arts and Letters

Missouri State University
College of Business

Missouri State University
College of Education

Missouri State University
Office of the President

Missouri State University Foundation

Kansas City

Feb. 2, 2019

PRESENTING SPONSOR

Sigma Pi at Missouri State Chapter and Alumni/Institute for Development of Ethics and Leadership

Wells Fargo Advisors



MAROON AND WHITE SPONSOR

McCown Gordon Construction

Mr. Panrob Kamla

Rich and Cindy Miller

Morgan Jones and Corrie Sifers

Missouri State University
Baker Bookstore

Missouri State University
College of Arts and Letters

Missouri State University
College of Business

Missouri State University
College of Education

Missouri State University
Office of the President

Missouri State University Foundation

Springfield

May 31, 2019

PRESENTING SPONSOR

BKD Wealth Advisors



COCKTAIL RECEPTION SPONSOR

Mercy



MAROON AND WHITE SPONSOR

DeWitt and Associates, Inc.

Garnett Wood Products Co., Inc.

Juanita K. Hammons Hall for the
Performing Arts

Med-Pay Inc.

Wendy's - Sam, June and Mike Hamra

Missouri State University
Baker Bookstore

Missouri State University Athletics

Missouri State University
College of Arts and Letters

Missouri State University
College of Business

Missouri State University
College of Education

.....
...Springfield continued

Missouri State University Choral Studies

Missouri State University
Division for Administrative Services

Missouri State University
School of Accountancy

Missouri State University
Office of the President

Missouri State University Foundation

IN-KIND SPONSORS:

Pineapple Whip

Hiland Dairy Foods

Rail Haven Motel

Johnny Morris' Wonders of Wildlife
National Museum and Aquarium

Chartwells



Scholarship recipient determined to break the cycle

“ONE DAY YOU’LL GET OUT OF THIS.”

Drew Hilgendorf used to repeat this mantra in his head when he was growing up.

He was taken from his abusive father at 8 years old, and bounced around in the foster care system for 13 years.

“My motivation was my ability to look to the future. I focused on that.”



From homeless shelters to a graduate program

Hilgendorf, a 2019 MaroonNation Kansas City scholarship recipient, always dreamed of “more” throughout his troubled childhood.

He grew up in Kansas City with an abusive father and a mentally ill mother. He spent nights in homeless shelters and on the streets when his mom tried to leave his dad.

“That was kind of the beginning of the ‘I want more’ mindset I’ve developed ever since,” he said.

With the help of his final foster parents, whom he calls his grandparents, Hilgendorf became the first person in his family to attend college.

“When I was living with my dad, I would get Cs and Ds and fail classes. When I lived with my foster parents, I got As and Bs. They set me straight. They basically pushed me in gear.”

He received his bachelor’s degree in parks and recreation from the University of Missouri in 2015. After graduation, he decided it wasn’t the field for him.

Again chasing “more,” Hilgendorf applied to Missouri State to study business administration at the graduate level.

“I wanted to try something new,” he said. “I made it clear to myself that wherever I went next, I wanted to reinvent myself.”

Grateful to those who helped him study at MSU

Hilgendorf began his master’s program in January 2018.

Four days before the start of school, his father passed away.

“I dealt with everything, from dealing with personal items to paying for his funeral, in four days,” he said. “I was told to leave it to the state, but I didn’t agree with that. He was still my dad. He did awful things to me, but he’s still a person.”

His caring attitude toward other people flourished at MSU. He immediately became involved with the MBA Association, which feeds his “fix it” approach to life.

“I don’t like to have things where they are for very long,” he said. “We’re in fertile ground with organizations and companies in Springfield. I want to utilize every resource I have to not only help myself with the future job search, but also help somebody else.”

Hilgendorf is also a graduate assistant, which helps him have less financial stress. He has high hopes for his future.

“I want to have a spouse and be a good role model to my children,” he said. “I want to help people, starting with the family I hope to have. I think I was put here to break the cycle I was born into. I won’t let it happen again.”

Only one to three percent of children who grow up in foster homes graduate with a four-year degree. Even fewer go on to graduate education.

“It irks me that the statistics are so low.”

Hilgendorf knows that all these children need is a chance. He hopes to be an example for people like himself in the future.

“I am grateful for the people who have helped me and invested in me,” he said. “Because of you, a former foster kid overcame and is reaching his dreams.”





Missouri State partners with U.S. Bank Foundation for Any Given Child

Experiencing a live theater performance.

Feeling the beat as a dance team glides effortlessly in sync.

Visiting museums and examining masterpieces up close.

Listening as a musician commands attention from center stage.

These opportunities can inspire and change a life. But not every family can afford to provide these enrichment activities for their children.

Any Given Child, an initiative by the John F. Kennedy Center for the Performing Arts, began to ensure equity and access to these types of experiences. And Missouri State University joined the local efforts of Any Given Child in 2013, supported by the College of Arts and Letters.

Through this initiative, local leaders in the arts community design, implement and sustain arts education programs for students. In the Springfield area, more than \$100,000 is invested in the initiative annually.

These funds allow more than 17,000 kindergarten through 8th grade students in Springfield Public Schools (SPS) to have access to arts enrichment programming at Missouri State and the other Springfield community partners.

For the last three years, the U.S. Bank Foundation has provided funding to the Missouri State University Foundation to support this program.

“The Missouri State Foundation seeks partnerships which extend our reach and allow the university to continue providing unique educational opportunities,” said Stephanie Matthews, director of corporate and foundation relations.

Prime seating to backstage

The funds cover the travel expenses for all 8th grade students from SPS to attend two performances at the university. For many, this may be their first live production – and it may also be their first visit to a college campus.

After the theater and dance performances, students meet and discuss the performances with the performers. Middle school teachers also receive age-appropriate curriculum to help students reflect on what they have seen and heard.

“Artistic and cultural enrichment and learning through play are focuses of the U.S. Bank Foundation,” Matthews said. “With age-appropriate arts experiences, Any Given Child fosters creativity and provides an outlet for youth to create and play, making this program ideal for this partnership.”

Recognizing a life well-lived, establishing opportunities for others

Leaving a legacy touches the lives of countless Missouri State University students, faculty and staff.

Alumna continues the legacy of education

For Judy Irwin, giving back to her alma mater, Missouri State University, was a given. Born and raised in Springfield, Irwin received her education – from grade school until graduate school – on the MSU campus.

She completed grades 1-12 at Greenwood Laboratory School, then went on to obtain both a teaching undergraduate degree, and guidance and counseling master's degree from Missouri State. She also finished course work in the specialist program.

DEVOTED TO EDUCATION

Irwin's family always prioritized education. She recalls them talking about "when" she would graduate from college, not "if."

It's no surprise then that she chose a career as an educator and put the degrees she earned at MSU to good use. Irwin spent 35 years working for the Springfield Public School District – 10 years as a teacher and 25 years as a counselor and psychological examiner. Since she began teaching in 1959,

her education career has included everything from helping at-risk children to testing and identifying gifted students.

"Everything I learned about being equipped to be a teacher and counselor, I learned at MSU," said Irwin, who received all of her training and completed all of her postgraduate refresher classes at the university.

IMPACTING STUDENTS AND THE UNIVERSITY

Her belief in the power of education and love for Missouri State led her to make an estate gift to the university.

The gift includes:

- The Judith Irwin Endowed Scholarship Fund – scholarships for full-time MSU undergraduate or graduate students.
- The Judith Irwin College of Education Fund for Excellence – supports the needs of the college at MSU.
- The Judith Irwin Missouri State University Fund for Excellence – supports the needs of the university.
- A contribution to Bear POWER (Promoting Opportunities for Work, Education and Resilience), an inclusive college program at MSU for individuals with intellectual and developmental disabilities.



Photo provided by Life Touch, 2004.

"This gift enables me to make a difference in the lives of students," Irwin said. "I know what a difference education can make in their lives and I want to help them."

WORDS OF WISDOM

Irwin's fondest memories of her time at Greenwood and MSU are the relationships she formed. Many of her Greenwood classmates, college friends and Alpha Delta Pi sorority sisters turned into lifelong friends.

As such, one of her top pieces of advice to current and future Bears is to remember that people are the most important things in life and relationships stay with you forever.

Other words of wisdom she has to share are be your authentic self; take pride in your uniqueness and abilities, and use them well; be kind to others; and be a force for good.

Walking the walk

Pat Walker's life of service in Missouri started with taking a walk in someone else's shoes in Oklahoma.

She grew up in the 1930s. That era brought the Great Depression and the Dust Bowl to the Midwest. Families like Walker's had little money. Some couldn't afford to buy footwear.

The process went like this: On Sunday mornings, Walker's family would loan their shoes to their neighbors so they could go to Mass. Those people would return the shoes when they got home. Walker and her family put them on and went to church.

"I grew up in a situation where if we didn't pitch in and help each other, we wouldn't survive," Walker said.

A lifetime of service emerged. She served on more than 30 national, state and local boards of directors. And in 2018, the Missouri Public Affairs Academy received a gift from Walker's daughter through the Missouri State University Foundation.

Each summer, the academy brings talented Missouri high school students together to develop their understanding of public affairs.

Thanks to the gift, from now on, you can call the organization the Pat Walker Missouri Public Affairs Academy.

A TOTAL SURPRISE

When Walker visited the academy's 2018 class, she had no idea that the gathering was actually to celebrate her accomplishments and announce the naming gift.

"She thought she was just coming for something else," said Brent Dunn, Foundation executive director, seconds after he made the announcement.

Pat's family, including her daughter, Lee Ann, made the donation as a way to mark her achievements in public service. Pat's contributions to Springfield include establishing Meals on Wheels, starting the city's first hospice and negotiating the transfer of the Ozarks Public Television license to Missouri State.

"Naming the academy after Mom was a perfect fit to honor her during her lifetime," Lee Ann said. "We know it will assure future generations that one good woman can change the world."

Walker said she was overwhelmed but felt so thankful that her name would be attached to an organization that exists to develop future ethical leaders.



"Today's students are so aware and so bright," Pat said. "They're able to use technology and social media to pull communities together and help others."

"I hope that continues. If we're able to plant a seed to help enrich and strengthen our communities, we're going to be fine in this country."



KAUFFMAN

MISSOURI
STATE
UNIVERSITY



2019 senior class gives the campus a new Bear

Missouri State can never have too many Bear statues.

That's what the class of 2019 believes. Their senior class gift donations went toward designing and installing a new Bear statue on the south lawn of the Plaster Student Union.

"We decided in 2017 to start an ongoing tradition of adding more Bears around campus," said Macy Hankel, 2019 senior class president. "The location of 2019's gift is intentional, because that space is dominated by students, fueled by students and beautiful because of students."

The student winner of a campuswide contest was able to create the look for the new statue.

"We asked a student to design the statue because we wanted to get students even more involved in the building of this tradition," Hankel said.

The design theme is "what student engagement looks like from a student viewpoint."

2019 seniors had the opportunity to donate to the Bear through a crowdfunding site.

They were offered incentives based on the size of their donations. Students who gifted the commemorative amount of \$20.19 received an honor cord to wear at graduation.

"The class of 2019 was the first class to fully fund a senior class gift in many years," Hankel said. "It wouldn't have been possible without the generosity we saw throughout the campaign. My whole heart goes out to those who donated."

The class of 2019 statue joins a group of 20 other new Bear sculptures. All of them were expected to be installed in fall semester 2019.



Giving back to their community

The Shaws have passed down a love of education through the generations.

Margaret, better known as Peg, and Roger Shaw always gave back to the Oregon County community.

“The Shaw family’s roots are deep in Oregon County as well as in service to others,” said Heather Kamps, director of development at MSU-West Plains.

When Roger passed, Margaret and their sons, William W. (Bill) and the late Roger D. (Dusty), wanted to commemorate his legacy. They established the Roger D. Shaw Endowed Scholarship at Missouri State University – West Plains in 1993.

When Margaret passed, their sons honored her the same way. In 2006, the Margaret W. Shaw Endowed Scholarship was created.

Bill Shaw, one of Margaret and Roger’s sons, said he comes from a family who wants to help students, especially in Oregon County.

“We have a long history of being interested in education,” Shaw said.

Helping others is in their blood. Their ancestors have made contributions to the nation. Shaw’s uncle, Russell M. Wilder, was emeritus professor of medicine in the Mayo Graduate School of Medicine; a master of the American College of Physicians; and a renowned specialist in nutrition and metabolic diseases.

Shaw’s grandfather was head of the department of Ophthalmology at Rush Medical College in Chicago, and later led the Ophthalmology department at the University of Chicago. He was one of the founding members of the American Board of Ophthalmology, Inc., the first American board to certify medical specialists.

So naturally, giving back feels natural.

“These scholarships are one of the things we can do to help people directly in the county,” Shaw said

ABOUT THE ROGER D. SHAW ENDOWED SCHOLARSHIP

Each year, six students are awarded \$1,000.

The scholarship goes to students who are forestry or agriculture majors from Oregon County. Students must submit two letters of recommendation from previous instructors, have a GPA of 2.5 and show financial need.

ABOUT THE MARGARET W. SHAW ENDOWED SCHOLARSHIP

Each year, four students are awarded \$1,200.

The scholarship is for students in Oregon County who show financial need.

Impact on the community

Since 1993, MSU-West Plains has given the Roger D. Shaw Endowed Scholarship to about 75 students. MSU-West Plains has given the Margaret W. Shaw Endowed Scholarship to about 32 students.

“Scholarships, such as those established by the Shaws, have a lifelong impact on students at Missouri State University-West Plains,” said Kamps. “Living in one of the poorest Congressional districts in the United States, many of our students would not be able to continue their education post high school without the outpouring of generosity of others.”

Foundation Board of Trustees

Members of the Missouri State University Foundation Board of Trustees are some of the most exceptional supporters of Missouri State. They advise us as we seek private gifts and invest private funds for the benefit of university projects and programs.

More about the trustees:

MissouriStateFoundation.org/Trustees

Executive committee

Gordon Kinne, *Chair*
L. Joseph Carmichael, *Vice Chair*
Dr. Bonnalie O. Campbell
John D. Foster
Robert A. (Tony) Foster
Karen L. Horny
Mark McQueary
Mary H. Schrag
James H. Wilson

Michael H. Ingram, *Immediate Past Chair, Ex Officio*

Clifton M. Smart, III, *Missouri State University President, Ex Officio*

Beverly Miller Keltner, *Missouri State University Board of Governors, Ex Officio*

Michelle Nahon Moulder, *Chair, Missouri State University Alumni Association, Ex-Officio*

Stephen C. Foucart, *Treasurer, Ex-Officio*

W. Brent Dunn, *Executive Director, Ex-Officio*

Cindy R. Busby, *Secretary*

Trustees

H. Douglas Adams, PhD
Nita Jane Ayres
Jon T. Baker
James K. Bass
William K. Berry
Margaret A. Burd
David H. Capps
Ethel Curbow
Kenneth J. Dotson
Jacquie Dowdy
John F. Eilermann Jr.
Kevin E. Elliott
Marla J. Elliott
Tim Foote
Larry D. Frazier
Robert C. Fulp
J. Ryan Gamble
Martha A. Greene
Dr. Matthew A. Harthcock
Rev. Dr. Paula Hartsfield
David R. Henderson
Donna K. Henderson
Billy E. Hixon
Arthur D. Hurtado
Gary D. Irwin
Gerald L. Jackson
Diane L. Jenkins
Morgan P. Jones
Ann M. Kampeter
Patricia R. Kimball
W. Bryan Magers
Maxine McGruder
David B. McQueary
Mary McQueary

Rick McQueary
Kenneth E. Meyer
Richard H. Miller
C. Michel Minor
Kyle L. Moles
James L. (Pete) Morgan Jr.
Lisa C. Officer
Michael L. Oldham
Timothy B. O'Reilly
Dr. David W. Osborne
M. Ann Page
Dr. Peggy S. Pearl
Carol Pinegar
T. Edward Pinegar Jr.
Anna Marie Presutti
Scott Purvis
Toni L. Riccardi
William L. Rowe Jr.
Errett C. Sechler
Patricia L. Sechler
Timothy J. Siebenman
Corrie M. Sifers
Dr. Susan Sims-Giddens
Mark R. Stillwell
Tina C. Stillwell
Thomas G. Strong
Mary R. Tearney
Bradley D. Thomas
Terry W. Thompson
Gary M. Tompkins
Joseph W. Turner
Jack E. Weimer
John D. Whittington
James B. Wingfield
Richard F. Young





Alumni Association Board of Directors

The Missouri State University Alumni Association is governed by a 23-member board, with five officers on an executive committee.

The board:

- Represents the interests of the alumni population as a whole.
- In close collaboration with the office of alumni relations and the Missouri State University Foundation, has responsibility for providing leadership, resources and oversight of the Alumni Association's strategic plan, ensuring alignment with university goals.
- In close collaboration with the office of alumni relations and the Missouri State University Foundation, has responsibility for successful implementation of programs and activities.

More about the board:

MissouriState.edu/AlumniBoard

EXECUTIVE COMMITTEE

Michelle Nahon Moulder, 1986,
Chair
Jami (Goodwin) Medina, 2003,
Chair-Elect
Thomas "Haven" Miller, 1977
Vice Chair
Tara (Hamann) Calton '03
Vice Chair
Tina (Chasteen) Stillwell, 1972
and 1980, *Immediate Past Chair*

DIRECTORS

Frank Burkybile, 2008
Zandra Carson, 1994
Montira (Suraprasert)
Clippard, 1996
Brad Coy, 2004 and 2006
Derrick Docket, 2002
David Doolin, 1998
Adam Dougherty, 1990
Hollie Elliott, 2008 and 2013
Justin Ellis, 2002
Connor Fleming, 2020
Derek Fraley, 2001
Barry Johnson, 1974
Kelly (O'Hagan) Krause, 2005
Sheila (Miller) Moore, 1987
Aaren (Williamson) Muex, 2002
Bob Nelson, 2002
William Potts-Datema, 1981
Joseph Schiermann II, 2001
and 2003

EX-OFFICIO

Lori Winters Fan, *Executive
Director of Alumni Relations*
Clifton M. Smart, III, *President*
W. Brent Dunn, 1985 and 1991,
*Vice President for University
Advancement*

The Founders Club

The Founders Club recognizes the university's most generous donors whose financial support provides and encourages higher education at Missouri State.

Private gift support is an investment in the future of Missouri State University. It plays a vital role in student scholarships and faculty awards. It is vital to the enhancement of academic and administrative programs.

Membership in The Founders Club ensures the privileges of distinguished benefits and recognizes loyal donors for their commitment to the future of Missouri State.

Become a member

Members of The Founders Club make a minimum commitment of \$10,000 in cash, securities or property to the Missouri State University Foundation. Membership is also extended to those who make planned gifts with a value of at least \$10,000. Your affiliation is activated by completing, signing and returning a statement of acceptance for membership in The Founders Club.

BENEFITS OF MEMBERSHIP

- A Jade Glass award designed especially for members of The Founders Club.
- A lapel pin worn exclusively by members of The Founders Club.
- A special embossed card for members of The Founders Club.
- Invitations to members-only special events.
- Parking privileges for academic purposes in most campus lots.

- Invitations to special events of the university.
- Use of the Duane G. Meyer Library.
- Advanced ticket opportunities to some concerts and entertainment events on campus.

Membership medallions

Medallions are presented to members whose cumulative giving reaches certain levels. The medallions are given out at an annual reception. The types of medallions are:

- Governors Medallion, \$5, million.
- Founders Medallion, \$1 million.
- Platinum Medallion, \$500,000.
- Sterling Medallion, \$250,000.
- Presidents Medallion, \$100,000.
- Silver Medallion, \$50,000.
- Bronze Medallion, \$25,000.

Club roster

A full list of The Founders Club members starts on page 39.

How to join

Please contact Stephanie Smith at the Missouri State University Foundation:

 StephanieSmith@MissouriState.edu

 417-836-4143

THE FOUNDERS CLUB MEMBERSHIP

Dr. Yohannan T. Abraham and Mrs. Tessy Abraham	Wendell and Jane Bailey	W. Wayne and Janet Bischler	Gregory L. and Betsy A. Burris
Stephen and Mary Ellen Ache	Rob and Sally Baird	Dr. Phyllis Bixler	Chuck and Cindy Busby
Carey and Julie Adams	Tom Baird	Frances B. Bixler	Buffy and Geoffrey H. Butler
H. Douglas and Hilda Adams	Don E. and Betts Baker	BKD, LLP	Butler, Rosenbury and Partners (Tim Rosenbury)
Helen and Jim Adams	Jim Baker	BKD Wealth Advisors	David B. and Sandra D. Byrd
Jodie H. Adams	Jon T. and Jo A. Baker	John F. and Cynthia R. Black	Jennifer Byrd
Gib G. Adkins Jr. and Angela R. Adkins	Pat and Hilda Baker	Tom Black	Michael Byrd
Advanced Relational Technology	Stanley and Elaine Ball Foundation	Margaret Blackwood	Bo Calbert
AECI Associated Electric Cooperative, Inc.	BancorpSouth	Mr. and Mrs. James E. Blair	Bonnalie Campbell, PhD
David and Debra Agee	Rosemary Sullivan Bane	Greg and Tara Boehne	Dr. Steven G. and Nancy Lee Campbell
Agency Management Services, Inc.	Estate of John L. and Rita M. Bangs	The Boeing Company	Tac Caplan
Air Evac EMS, Inc.	Bank of America of Mountain Grove, Missouri	Donald E. and Mary J. Bonacker	Cardinal Roofing, Inc.
Rickey Albaugh and Mark Chambers	Bank of America of Springfield, Missouri	Gregory F. and Paula D. Boone	Michael Kaye Carlie
Albertsons	Bank of America of West Plains, Missouri	Eric Bosch	Thomas Carlson
Grisham W. Aleshire	Sharon Barber	Ronald R. and Carol J. Bottin	Joe and Marie Carmichael
Dr. Julie Alford	Barclay Enterprises, Inc.	Andrea G. and Stephen R. Bough	John and Jennifer Carnahan III
Dan and Donna Lynn Allen	William E. Barclay	John Stanley Bourhis	Robert and Margaret Carolla
Jeffrey and Lisa Allen	Jackie Barker	William L. and C. Onari Bowler	George E. and Ann Carr
Randy and Nancy Allen	Wayne V. and Barbara Barnes	Noel Boyd	George Thomas and Carol Jill Carr
Bobby Allison	Wayne C. Bartee	William J. and Martha Brackmann	James Edward Carr
Clifford J. Ameduri, MD	Daniel Bass	Robert Bradley	Jennifer Carr
American Family Mutual Insurance Company	James and Deborah Bass	Drs. S. Gaylen Bradley and Judith S. Bond	Steven L. and Angela L. Carr
American National Property and Casualty Insurance Company	Randy J. and Joan A. Bass	Wilbur H. and Patsy M. Bradley	Paul D. Carrington
American Postal Workers Union AFL-CIO, Local 888	Samuel Bass	Earl M. Brake	Carroll Business Systems, Inc. (Mark and Teresa Carroll)
Alka Amonker	Bass Pro Shops (John L. Morris)	Michael D. and Judy A. Breeding	The Carthage Foundation
AmWins Group	Robyn Bates	Michelle M. Brekken	Mr. and Mrs. Robert Caruth
C. David Andereck and Barbara S. Andereck	Sue Bates	Jim Bremer	Mona J. Casady
James B. Anderson	Jo Helen Beauchamp	Ruth Breuer	Michael and Lisa Casey
Jorge and Lillian K. Andrade	Gregory A. and Cheryl J. Beck	Brewer Science	John and Janice Catau
Anheuser-Busch Foundation	John and Tracy Beckham	Franklin G. and Shirley A. Bridges	Caterpillar Foundation
Archimica, Inc.	The Bee Payne Stewart Foundation	Jerry and Judy Brierly	Larry and Karen Catt
Don and Becky Aripoli	Rob Beeson and Laurie Mitchell	Patty Brooks	Thomas G. Cave Jr.
Renelda Arkebauer	Behlmann GMC Van and Truck Center (Mr. and Mrs. Ken Behlmann)	Cliff and Sharon Brown	Howard and Nadia Cavner
Charles and Karen Armstrong	Judith A. Beisner	Gary D. Brown	CDC of Springfield, Inc. (Brook S. Boehmler)
Margo S. Armstrong	Drew and Nancy Beisswenger	George Warren Brown Foundation	Central Dodge (Janet Neely)
Ruth H. Arneson	Susan Belcher	James E. Brown	Central Bank / Central Trust
Dr. Paul N. Arnold	Bell Savings and Loan Association	Jason and Julie Brown	Century Bank of the Ozarks (John and Chris Harlin)
Drs. George and Carrie Arquitt	Sharon Kay Belt	Estate of Marianna Brown	Cerner Corporation
AT&T	JC and Judith Benage	Tom and Carol Brown	Bill and Maret Cheek
Jim and Jane Atteberry	Drew Bennett	Mark and Debbie Brueggemann	Mary Hall Chiles and Richard M. Chiles
Jerry Atwood	Elizabeth Grisham Bennett	Dr. Stephanie Bryant	The Chris Sifford Memorial Foundation
Audio Acoustics, Inc.	Barbara J. Benway	Sandra L. and J. Wordy Buckner Jr.	Mrs. C. Ward Chrisman
Cindi Aurentz	Bill and Becky Bergmann	Darryl E. and Marilyn E. Bueker	John F. Chuchiak, IV
Nita Jane Ayres	Dr. Steven C. Berkwitz	David W. Buker, Inc. and Associates	CIBA-GEIGY Corporation (Dr. Adrian J. Moses)
Dee Bachus	Charlene Berquist	Steven M. and Ellen Bullard	City of West Plains
Rich and Jana Bachus	William K. Berry	Rick Bullock	Allan Stuart and Rosemond Owens Clapp
Howard and Linda Bailey	Theresa Bettmann	Margaret B. Arnold Bult	Lisa Dewoody Clark
Matthew and Stacey Bailey	Richard Biagioni	Raymond A. Burger	Michael S. Clarke, MD and Krystyna K. Clarke, RN
	Big Cedar Lodge	Burlington Northern Santa Fe Foundation	
	Patricia A. Birkes	Cheryl Burnett	
		Bernard G. and Pamela N. Burrier	

Grace J. Clifton
Sam and Michelle Clifton
Lynn Cline
Dan Cobb
Jeff and Angie Cockrum
The Coca-Cola Foundation
Abraham J. Cole
Susan Colegrove
William H. Coleman Jr.
Collective Brands Foundation
Donald L. Collins
Jeff L. Collins
Dr. and Mrs. Thomas A. Collins Jr.
Columbia Hospital South Auxiliary
Julie Combs and Bill Stacy
Commerce Bank of Springfield
Community First National Bank
Community Foundation of the Ozarks
Compugraphic Corporation
Conco Companies (Thomas H. Baird, III and Robert M. Baird)
Conoco, Inc.
Consumers Markets, Inc.
Jerry and Kay Cook
John R. Cook
Ronald C. Cook
Mrs. James H. Cooper
Cooper Foundation
John and Susan Cooper
Ric L. and Melanie Cooper
Robert C. Cope Jr. and Norma L. Cope
Michael and Martha Love Cordonnier
David Mark and Lou Ann Cornelison
Dr. Francis and Judy Corry
Carol Anne Costabile-Heming/
Ralf Heming
John and Carol Cowden
Larry and Carol Cox
Chris-Anne Crabtree
Vernetta M. Crawford
CreAsian
Chad E. and Chasidy R. Crissup
Trevor J. Crist
Crosfield Electronics, Inc.
Crosslink
Estate of Lee H. Cruse
CSI Central States Industrial
Michael and Krista Cully
Nancy R. Cuniff
Stanton and Ethel Curbow
Gregory L. and Nancy H. Curl
Chris Curtis
Custom Computer Consultants, Inc.
Sandra D'Angelo
Dr. Everett E. and Sandra L. Dahl

Virginia Pummill Dailey
Sharon and Dio Daily
Dairy Farmers of America
Dr. and Mrs. Mark L. Dake
Melissa Dallas
Larry and Marilyn Daniel
Darden Restaurants Foundation
Bill and Virginia Darr
Darr Family Foundation
Paula and Jerry Daugherty
Grant L. Davis
Warren and Anne Davis
Day Cattle Company
Ryan DeBoef
Malcolm D. and Janis Decker
Don DeLo
The Delta Foundation
Dermatological Product
Development Course
Delta Zeta
DeWitt and Associates, Inc.
Arlen and Darrelyn Diamond
Carl and Jan Dickey
Dickinson Foundation
(Wood Dickinson)
Tom Dickson
Diversified Plastics Corporation
Wanda Dobson
Rachael Dockery and Gwen Kearns
Toby and Katie Dogwiler
Linda E. Dollar
Suzanne Dollar
Dr. Earle and Dalene Doman
Domino's Pizza - Art Hurteau
and Marty Prather
Nancy and Tom Dornan
DoubleTree by Hilton - Springfield
The Dow Chemical Company
Foundation
Dr. Roger and Jacquie Dowdy
Charles and Pam Drago
Christina S. Drale
Drury Hotels
Ashley Dudenhoeffer
Michael J. and Susan W. Duggan
Janice R. Duncan
W. Brent and Jennifer Dunn
Larry and Julie Ebersold
Dana T. and Sharon L. Edwards
Thomas W. Edwards
EFCO Corporation (Michael
Farquhar, CEO)
Frank Einhellig
Gordon and Glenda Elliott
Kevin and Marla Elliott
W. Anson and Betty Elliott

Ellis, Ellis, Hammons and Johnson
(Mr. and Mrs. Ransom A. Ellis Jr.)
Alva and Patricia Ellison
James C. and Sally A. England
Robert Lloyd Ernst, Chemistry
Emeritus
Drs. Thomas F. and Susan W. Essman
William C. and Marcy A. Estes
Lori Winters Fan
Farm and Home Savings
Farm Bureau Life Insurance
Company of Missouri
Farmers Cooperative Livestock
Marketing Association
Janice Summers Faucett
FCS Financial
Dr. Monika Feeney, DNAP, MS, CRNA
Robert J. Fenton and
Beverly S. Fenton
Bob and Charles Ferber
Jeris P. and John F. Ferguson
Mrs. John P. Ferguson
Wendy and Michael Ferguson
Drs. Jay Fiene and Jan Muto
Dr. and Mrs. R. F. Fiester
R. Gary Finley
First Home Savings Bank
First National Bank - Houston
Mr. and Mrs. J. Howard Fisk
Mike and Heather Flanagan
David Kerrigan Fly and
Adrienne Anderson Fly
Tim Foote
Laura Jane Ford and Kathy S. Hubbard
Michelle J. and John M. Hulett
Juanitha M. Foster
John D. Foster, Sr. and Susan A. Foster
Robert A. and Lynette Foster
Steve and Peggy Foucart
Foundation for Immunotoxicology
Dr. Marvin L. and Bettye Fowler
Dr. David M. and Mrs. Deborah
S. Fraley
Derek Fraley
William W. Francis Jr. and
Beverly A. Francis
Don and Diane Frank
Michael and Tammy Franks
Larry and Glenna Frazier
Dale and Kathleen Freeman
Rob R. Freeman
Mabel Friend Study Club
Friendly Ford, Inc. (Mr. and
Mrs. Dan Wise)
Rita Fugate
Fulbright-Swyers Foundation
The Rob Fulp Family

Ben Fuqua
Gloria J. Galanes
Drs. Terrel and Julie Galloway
Mr. J. Ryan Gamble and
Mrs. Cristi C. Gamble
Leland L. Gannaway
The Gannett Foundation
The Garner Family
Jay J. Garnett and Karen
Hickox Garnett
Mark and Diann Garnett
Andrew Scott Garton
Gary V. and Karen Garwitz
Dr. Walter and Martha Gaska
Gateway
William P. Gaut
General Motors Acceptance
Corporation-Pontiac Division
Dr. Larry L. George
Larry W. and Rebecca J. Giboney
Don M. and Judy Gibson
Kaye Foster-Gibson
Susan Sims-Giddens
Ryan and Faith Giedd
James N. Giglio and Frances T. Giglio
Mr. and Mrs. David D. Glass
Gregory D. Glass
Mrs. James O. Glauser
Goetze-Niemer Company, Inc.
(Mr. and Mrs. Carl Oughton)
David Gohn
Thomas R. Goldberg
John Goodman
Dr. Annette Gordon
Gourley Foundation
(Connie L. Gourley)
Douglas Gouzie
W. Curtis and Nancy K. Graff
Melanie Grand
Great Rivers Distributing Company
(Greg and Courtney Beykirch)
Great Southern Bank (William
V. and Ann Turner)
Greater Ozarks Building
Systems Association
Greater Springfield Board of Realtors
Greek Week Committee
Nathaniel and Melinda Green
Walter and Kay Green
Greene County Farm Bureau
Janice Schnake Greene and
Brian D. Greene
Marty Greene and Jack E. Casper Jr.
Greenwood Athletics and
Debate Booster Club
Greenwood PTA
John and Brooke Griesemer

Dr. Kathleen Griesemer
 Conrad and Bonnee Griggs
 Wyman and Sue Grindstaff
 Estate of John E. Grinstead
 Dennis M. and Janice K. Grisham
 The Grisham Family Trust
 Jeanette Grisham
 John A. Grisham
 Scott Michael Grupas, DO
 Guaranty Bank
 Kenneth D. and Nancy J. Gunter
 Gregory and Carol Ann Haake
 Mr. and Mrs. James A. Hagale
 Ralph and Janet Hagemann
 Dr. Sondra F. and Jerry L. Hagerman
 Do Won and Myung Yun (Kim) Hahn
 Jay R. Hahn
 Shel'Leè D. Haik
 David and Kimberly Hamm
 Tracy Hammond
 Brian and Kimberly Hammons
 Hammons Products Company
 R. Dwain Hammons
 June S. and Sam F. Hamra
 Michael L. and Karen L. Hanover
 William R. Hardie
 Fred and Faunlee Harle
 Harlin Family Foundation
 (John and Chris Harlin)
 Estate of Harold "Speedo" Harmon
 William Patrick and Kimberly
 Davis Harrington
 Harris Corporation
 Janice Harris
 Mr. and Mrs. Harold W. Harrison
 Lea Harthcock and Jenifer Elam
 Dr. and Mrs. Matthew A. Harthcock
 George and Paula Hartsfield
 Galen R. and Grace B. Hasler
 William R. Hass and Helen J. Hass
 Everett and Nila Hayes
 Winston McDonald Haythe
 Heart of America Beverage Company
 (Jim Ferguson)
 Heartland Regional Council
 of the Institute of Management
 Accountants
 Dennis and Anne Heim
 Stephanie Hein and Tony Hein
 Dr. George J. Heinz and
 Dr. Kathryn Hope
 Terry J. and Gretchen E. Heinz
 Heller Creative Cave
 David R. and Donna K. Henderson
 Shaun D. Hennessey
 Hensel Phelps Construction Company
 Virginia Herb
 Doug Hesterly
 Dr. Jill L. Heyboer
 Janet L. and Roland M. Higdon
 Highland Springs Country Club
 Joe and Marcia Himes
 Billy E. and Carolin J. Hixon
 Cynthia F. Hollander
 William L. and June Ross Holman
 Harry and Susan Hom
 Home Builders Association
 Charitable Foundation
 Hood-Rich, Inc. Architects,
 Engineers and Land Surveying
 (Mr. and Mrs. Jack K. Hood)
 Madeleine Hooper
 Karen Louise Horny
 Hotel Nikko - San Francisco
 Richard D. Houk
 Alexander and Barbara Hover
 Sally Lynn Hubbard, MD
 Jack J. Hubbell
 Tonni Beth VanHook Hudson
 David R. Huff
 Jeffrey C. Huff
 Scott and Jennifer Huff
 Holly Lane Hunt and Heather
 L. Hunt-McNamara
 Rex and Sharon Hunt
 Derek B. and Melodee L. Hunter
 Art and Dianna Hurtado
 Jeff and Jana Hutchens
 Cody W. and Marilyn Ice
 Cody W. Ice II
 Michael and Barbara Ingram
 Joseph and Jenifer Insley
 International Association of
 Fairs and Expositions
 International Brotherhood of
 Electrical Workers, District 11
 Dr. and Mrs. John H. Ippensen
 Gary and Kathy Irwin
 Judy Irwin
 J. E. Dunn Construction Company
 Jack Henry and Associates
 Dick and Julie Jackson
 Gerald Lee Jackson
 Sue Ward Jackson
 Gary G. and Carolyn L. Jacobs
 Dave and Tammy Jahnke
 Dr. Harry R. and Marion James
 Linda S. and Jerry G. Jared
 Bruce and Diane Jenkins
 Steven L. and Nancy A. Jensen
 JMS Charitable Foundation
 Dr. and Mrs. Charles L. Jobe
 Bill and Diane Johnson
 Charles and Janice Johnson
 Darlene R. Johnson
 Elaine Johnson
 Fritz M. Johnson, MD
 Hank and Jackie Johnson
 John and Connie Johnson
 Lee J. Johnson
 Leo and Carolyn Mirts Johnson
 Leroy and Jan Johnson
 Mark and Patti Johnson
 Patrick and Carey Johnson
 R. Bruce and Vicki L. Sterling Johnson
 Patricia S. Johnston
 Carol Jones
 The Jones Family
 Jacque Moody Jones
 Jim and Pat Jones
 Robert G. and Cheryl Jones
 Joplin Regional Stockyards, Inc.
 Journagan Construction Company
 (Allen Journagan)
 Jean Journagan
 Journal Broadcast Group
 Junior League of Springfield
 Justice Jewelers
 Millicent L. Kalil
 J. George and Eleanor M. Kambouris
 Ann M. Kampeter
 Kansas City Life Insurance Company
 Mimi Kauffman
 Russell M. and Glenna Keeling
 Andrew Keethler Jr. and
 Janet E. Keethler
 Nancy Keiser
 William T. Kemper Foundation
 James and Tia Kendall
 Ketchum Charitable Foundation
 David and Cheryl Kesterson
 The Killian Group of Companies
 Dr. Kurt Killion
 Patricia R. Kimball
 Paul and Janet Kincaid
 Gordon and Laura Kinne
 Robert E. and Barbara R. Kipfer
 William E. Kirkman
 Trish Kissiar-Knight
 Donald L. Klug
 Koch Industries, Inc.
 Jesse A. Kuhn
 Allen and Karen Kunkel
 KYTV
 Dr. Cameron and Mrs. Susan LaBarr
 Lake Country Youth Soccer, Inc.
 Ursula Lamberson
 Dennis and Rita Lancaster
 Corey John Landacre
 Landmark Bank
 Don and Lea Landon
 Shirley A. Lawler
 Larson Farm and Lawn
 Brad and Lindsay Lawing
 H. Clarence Lawson
 Theresa King Lawson
 Jill K. Layman
 Dr. Philip J. Le Favre
 The Leamy Family
 Andrew V. and Cindy K. Lear
 Grover T. Lee
 Leggett and Platt, Incorporated
 The Lemberger Company
 Katherine Hawkins Letterman
 Dr. Noel Rex and Rosemary Lewis
 Luke and Cynthia Libby
 Liberty Bank
 Life Insurance Association of Missouri
 (Randy Scherr)
 Day Ligon
 Cynthia J. (Suttles) Lilleoien
 Paul Lindsey
 Kevin and Amy Lines
 Matthew and Theresa Linski
 Stan and Kim Lippelman
 Jack Lipscomb
 Larry W. and Tracy F. Lipscomb
 David and Christina Litherland
 Randy and Johnelle Little
 J.E. and Eileen S. Llewellyn
 Camille B. and Alan W. Lockhart
 Lockheed Martin Corporation
 Dottie Lofstrom
 Ron and Robin Looney
 Wilda F. Looney
 Lucinda Anne Love
 Wagner Love
 Estate of Terry Loveland
 Carl and Dianna Lowe
 Bill and Nancy Luckfield
 Dr. Robert H. Luke
 Dr. Herbert L. and Mary Beth Lunday
 Louise Johnston Lunn
 Dr. Robert O. and Alice Y. Lunn
 Robert S. Lurvey
 Guy and Dorothy Mace
 Neosha and John Mackey
 Bryan Magers
 William G. Magers
 Fredna Mahaffey
 Joyce Mahoney
 Brian and Deborah Malkmus

Bill and Doranna Manary
 Mitchell L. and Roberta M. Marks
 Dennis K. Marlin
 Mr. and Mrs. Eddie Marmouget
 E. A. Martin Company
 (Mr. and Mrs. Donald G. Martin Sr.)
 John and Jill Martin
 Robert J. Martin
 Marty Marty
 Tom and Beth Marty
 Drs. Gerald and Julie Masterson
 Lori L. Matthews
 Victor H. Matthews
 Mary Anne Mauss and Mark A. Mauss
 Fred and Evelyn Maxwell
 Alora C. Mazzella
 John and Sally McAlear
 McBride and Son Management Co.
 C. Gordon McCann
 Brad McCarter and Tammy McCarter
 Belinda R. and Bernard S. McCarthy
 Norma and Tom McClellan
 Ken McClure
 Barbara Carlson McCormick
 William H. and Janice McDonald
 Clarence E. McElroy
 Chip McGeehan
 Robin McGovern and Hunter Hall
 Maxine McGruder
 Greg McManus
 Kerry McManus
 Mark and Jennifer McNay
 Jack McNevin
 McQueary Brothers Drug Company
 David B. McQueary
 Fred G. McQueary, MD and
 Terri West McQueary
 Ramona F. McQueary
 Mark L. McQueary
 Rick and Mary McQueary
 William H. and Alison N. McQueary
 Jami and Nicholas Medina
 Juliet Mee
 Terry O. and Mary Kay Meek
 David and Gail Meinert
 Stan and Cindy Melton
 Mercy Health Springfield Communities
 Herbert and Carolyn Merrick
 Fred J. Mertz
 'Lyn Meyer
 Mr. and Mrs. James S. Meyer
 Kenneth E. Meyer
 Mark L. and Judiann R. Meyer
 Glenna J. and Harold W. Meyers Jr.
 Sara Meyr Addison
 MFA Foundation
 Mid-Missouri Bank
 Carol J. Miller
 Dennis C. and Lorie A. Miller
 Mrs. Jack L. Miller
 Lewis and Patricia Miller
 LTG (Ret.) and Mrs. John E. Miller
 Matt and Kerri Miller
 Rich and Cindy Miller
 William W. Miller Jr.
 Worth Robert Miller
 C. Michel Minor
 Steve and Dorothy Minor
 Missouri Bar Association
 Missouri Beef Industry Council
 Missouri Employers Mutual
 Missouri Farm Bureau
 Missouri Higher Education
 Loan Authority
 Missouri Insurance Education
 Foundation
 Missouri Seedmen's Association
 Missouri State University Dames
 Missouri State University Residence
 Hall Association
 Laurie K. Mitchell
 Stephanie Strong Mitchell
 Kyle and Kelli Moles
 Dr. Mollie Autry Molnar
 Joe and Tammy Monk
 Monsanto Company
 Melissa and David Montgomery
 Robert and Vanessa Montileone
 Timothy and Jonna Montileone
 Marilyn Amelia Moore
 Mark W. and Jackie Moore
 Scott and Gayla Moore
 Stan Moore
 Steven W. Sr. and Shanda L. Moore
 Angela R. Morelock
 Wayne D. and Kathy J. Morelock
 Dr. Charles H. and Robin L. Morgan
 James L. "Pete" and Sara Morgan
 Morgan Stanley-Springfield,
 Missouri Office
 Eric and Taleyna Morris
 Jane Morris
 Jim D. and Catherine R. Morris
 Lynn A. and Jan Morris DBA
 Family Pharmacy, Inc.
 Matthew D. and Tally J. Morris
 Sue (Biglieni) Morris
 Jeff P. and Pamela L. Morrissey
 Kym and Michael Morse
 William and Margaret Moskoff
 Michelle K. Nahon Moulder
 James C. and Roberta H. Moyer
 Dr. David and Sarah
 H'Doubler Muegge
 Bill Mueller
 Raymond L. Murphey
 Marie Murphree
 Marvin Murphree
 Jeannette L. Musgrave
 Charitable Foundation
 William R. Mustain
 Denver and Seth Myers
 Tim and Melissa Myers
 Nabholz Construction Corporation
 (Lowell Thomas)
 Sharon Nahon
 NBI, Inc.
 Janet Neeley
 Eric Nelson
 Robert Nelson
 Ms. Ann Neu
 Leo T. Neu III
 New Life Treatment Centers, Inc.
 Dr. Steven E. and Leesa Newbold
 New York Study Fund
 Johnnie G. and Arlene A. Nichols
 Dr. Gary J. Nie
 Michael T. Nietzel
 Noble World Communications
 (Mr. and Mrs. Robert Noble)
 The Samuel Roberts Noble
 Foundation, Inc.
 David Harrell and Mabel Jackson
 Northrip (Donald Wendell
 and Chris Northrip)
 Estate of James and Peggy O'Bryant
 Dennis and Stephanie O'Dell
 David and Lisa Officer
 Dr. and Mrs. Akinniran and
 Folake Oladehin
 The Oldham Family
 Richard and Teresa Ollis
 Olsson Associates
 Connie O'Neal
 Nancy J. and Gregory P. Onstot
 Mark and Debbie Ophoven
 Bud E. Orchard
 O'Reilly Auto Parts
 Charlie and Mary Beth O'Reilly
 David O'Reilly
 Larry O'Reilly
 Brenda Osbern
 David Osborne
 Daniel F. and Linda O'Sullivan
 Mrs. Thomas O'Sullivan Jr.
 Linda Overend
 Dr. Rose Mary Owens
 J. Steve and Arnola C. Ownby
 Ozark Independent Living
 Ozarks Area Chapter RIMS
 Ozarks Association of Pharmaceutical
 Representatives
 Ozark Chapter Missouri Society
 of Professional Engineers
 Ozarks Medical Center
 Ozarks Physical Therapy Associates
 Jay R. and Melinda Padgett
 M. Ann Page
 Jack and Inez Pahlmann
 Patricia A. Palmer-Sanditz
 Alex N. and Nila C. Paradowski
 Mildred C. Parker
 Dr. Steve and Jane Parker
 Betty and Todd Parnell
 Pasta Express
 Mary Jo Patton
 Clyde and Judy Paul
 Scott and Kristi Pavel
 Dale and Pam Pearce
 Peggy Pearl
 Galen and Marleen Pellham
 Pellham-Phillips-Hagerman
 (Larry Phillips)
 Cynthia L. Pemberton
 Richard A. Pendleton
 Penmac Staffing Service, Inc.
 Dr. Raffaele Pennella and
 Dr. Maryam Mohammadhani
 Ron and Janice Penney
 Patti A. Penny
 Pepsi-Cola General Bottlers, Inc.
 Edward and Heidi Perkins
 Mark and Teresa Perrey
 Bill and Heather Perry
 Nell Peters
 Vicki and Tom Peters
 Drs. Charles and Linda Pettijohn
 Dr. J.B. Petty
 Jeanne A. and Harry Phelps
 Phi Kappa Phi
 Phillips Petroleum Company
 Physical Therapy Specialists Clinic,
 Inc. (Mary Sheid)
 Walter M. Pierce
 Sophie Pierpoint
 Vijay and Aarti Pillai
 Peggy and James N. Pinckley, MD
 Angela Renea Pinegar
 Ashlie S. Pinegar
 Carol and T. Edward Pinegar Jr.
 Steve Plaster (Robert W. Plaster
 Foundation, Inc.)
 Linda J. Pollard
 Marilyn Post

Donna J. Powers
 Marie Prater
 Drs. Thomas G. and Kimberley A. Prater
 John and Karen Prescott
 The Presser Foundation
 Larry and Kandace Prewitt
 Carl and Kathy Price
 Price Cutter
 Robert L. Price
 Dr. Kathy J. Pulley
 Butch and Kathy Purvis
 Peggy Quintus
 Jason and Bertie Rader
 Emma Jean Rafferty
 Kent P. and Gay Ann Ragan
 The Anne K. Raikos Charitable Supporting Foundation
 Ralston Purina Trust Fund
 Mr. and Mrs. Michael R. Ramon
 Alan Ramseur
 Tom and Paige Rankin
 Peter C. Rauch
 Red Man Pipe and Supply
 Carol J. and Robert L. Reed
 Linda Regan and Steve Brooks
 Helen C. Reid
 Fay Renner
 Don Reser
 Frances D. and Robert D. Reynolds
 J.B. Reynolds Foundation
 Estate of Lavella I. Reynolds
 Toni L. Riccardi
 Rick's Automotive
 Lynn and Debbie Robbins
 Elizabeth Roberts
 Jana K. Estergard Roberts
 Phillip B. Roberts
 Gordon G. and Barbara A. Robertson
 Linda K. Robertson
 Rockwell International
 J.V. Rockwell Publishing, Inc. (J.V. and Thelma Rockwell)
 Keith A. and Lynne Rodefild
 Charles and Cindy Rodgers
 Jim and Jayne Roebuck
 Bill and Bev Rohlf
 Rohm and Haas Company
 Doug and Linda Roller
 Paul and Debbie Rollinson
 William R. Roman
 Abigail Rose
 Dr. Alan and Darla Rosen
 Rotary Club of West Plains
 Dr. Philip and Jennifer Rothschild
 Bill and Nydia Rowe
 Drs. Steve and Michéle Rowe
 Elizabeth Rozell and David Rush
 Christina Ryder and Associates, LLC
 Ryder System, Inc.
 St. Francis Farm
 St. Louis Chapter of the Risk Insurance Management Society, Inc.
 Safety National Casualty Corp.
 Kelly G. and Angela C. Sallee
 Andy Salmon
 Susan Sanders
 Pete Sanderson
 Scott M. and Krista L. Sanderson
 Virginia Gohn Sapp
 James M. and Peggy A. Sauer
 Sarah Scaife Foundation, Inc.
 Todd L. and Nancy Scarlet
 Gary and Ruth Schafer
 Drs. Kent Bradley and Ann Corry Schaller
 G. Alan and Lynn M. Schick
 William C. and Susan F. Schindler
 Bruno and Karen Schmidt
 Karl and Sabine Schmidt
 Dr. and Mrs. Dennis Schmitt
 Michael and Amy Schnake
 Schneider Foundation
 Karen W. and J. Michael Schneider, MD
 Wayne H. Schnelle, Shirley Schnelle, and Eric Schnelle (S&H Farm Supply)
 Drs. Kent and Ann Schaller
 Gerrit Scheepers
 Steven L. and Melanie Stemmons Schoen
 Mary and David Schulte
 Dr. Andrew and Kamille Schultz
 Howard R. Schwartz, MD, and Ruth Grant, MD
 Daniel E. and Melissa S. Scott
 Lagena Y. Scott
 Patricia K. Scott
 Robert and Alice Scott
 Mark and Alyce Scrivner
 Jill E. and Richard A. Seagrave, MD
 Dr. Richard and Jaimee Seagrave
 Patricia Sechler
 Karen Mason See and Andrew See
 SEI
 SER Solutions
 Bonnie Shackter-Thompson
 Kathy Shade
 Dr. Kishor Shah
 Frank and Cynthia Sharp
 John Sharp and Meredith Sharp
 Mark Sharp and Ann Howard
 Arch W. Shaw Foundation
 Dr. Robert and Mrs. Katy Shaw
 Ms. Suzanne Shaw
 Dr. C. Norman Shealy
 Mary Sheid
 Shelter Insurance Foundation
 Jerry Short
 Larry Sidwell
 T.J. Siebenman
 Corrie Marie Sifers and Morgan Jones
 The Chris Sifford Memorial Foundation
 Bob Signaigo
 Paul Silkwood
 Richard and Carol Silvey
 Reba Sims
 Dee Siscoe
 Jeanie and Kevin Skibiski
 Tom and Marsha Slaughter
 Charles and Lisa Slavens
 Clif and Gail Smart
 Allison Smith
 Cathy and Troy Smith
 Kay Smith
 Ralph and Karen Smith
 Robert E. and Judith A. Smith
 Smith-Glynn-Callaway Medical Foundation
 Jennifer and Rick Snyder
 Society of Manufacturing Engineers
 Sodexo Dining Services
 Jarrod R. Sohosky
 South Central Missouri Citizens Advisory Board
 Southwestern Bell Telephone Company
 Jerry and Carolyn Love Sparks
 Joe Spears
 Richard L. and Rose Ann Splitter
 Vicki J. Spoonhour
 Anthony and Valerie Spratte
 Springfield Area Chamber of Commerce
 Springfield Black Tie, Inc.
 Springfield-Branson National Airport
 Springfield Business Journal
 Springfield Contractors Association
 Springfield News-Leader
 Sprint Foundation
 The Squires Family
 Russ Squires
 Burton E. and Shirley C. Stacy
 Jan Stahle
 David Stanley and Jean B. Keffeler
 Dr. Donal and Vicki Stanton
 Marilyn Starnes-Biggs
 State Farm Companies Foundation
 State Farm Insurance Companies
 State Street Corporation - Kansas City
 Estate of Ruby Stecker
 Helen M. Steiner
 Earl A. Steinert
 Ron and Lezah Stenger
 Byron and Elizabeth Stewart
 Mrs. Donna Lyn Stewart
 Mark and Tina Stillwell
 Ronald C. and Dawn L. Stith
 Lorene H. Stone
 Roger and Sherae Stoner
 Shane and Felicia Storm
 R. Christopher Stovall and Tracy Clark-Stovall
 Ben and Kristi Stringer
 David K. Strong
 John T. Strong
 Shawn and Amy Strong
 Thomas Strong
 Dr. and Mrs. Robert Stufflebam
 Jeanne and Terry Sullentrup
 John and Jane Sullivan
 Richard G. Sullivan
 Gregg and Judy Summerville
 Jerry L. Sumners Sr.
 Dr. and Mrs. Woodrow Sun
 Sunderland Foundation
 Dr. Kristene Sutliff and Jackson Sutliff
 Rebecca Swearingen
 Floyd and Martha Sweeney
 Sarah Swindler
 Bruce and Margaret Swisshelm
 Tandy Corporation/Radio Shack
 Mary Asher Tearney
 Mark Templeton
 J.W. Terrill, a Marsh and McLennan Agency LLC Company
 Ron and Sue Carrol Terry
 Texas Instruments Software
 George P. Theodorakos
 Nikki and Vern Thielmann
 Mr. and Mrs. Tom Thieman
 Bradley D. Thomas
 D. Virginia Thomas
 Kent and Barbara Thomas
 Clifton C. Thompson
 Len and Marcia Thompson
 Mr. and Mrs. Lynn H. Thompson
 Sheri Ann and Terry Wayne Thompson
 William Scott Thompson
 3M
 Jack and Stacey Thurman
 Dr. Robert and Dorothy Thurman

C. W. Titus Foundation
Terry A. Tolbert
Gary and Sydney Tompkins
Jeanne Toombs
Thomas W. and Shirley S. Townsend
Tracker Marine
Robert L. Trewatha
Tri-States Service
James and Candace Trogolo
David A. and Lesley K. Trottier
Mr. Robert Trussell and Mrs. Jaimie E. Trussell
Trust Company of the Ozarks
Mr. and Mrs. James C. Tucker
J. Sean and Mindy Turner
Joe and Traci Turner
Kathleen Turner
William V. and Ann Turner
Turner Family Foundation
Betty Jeanne Turoff
Mary E. Turrentine
Mr. Jeremy D. Tyler and Mrs. Erin M. Tyler
Lynn and Jeff Tynes
U.S. Bank of Springfield
U.S. Bank of Willow Springs
UMB Bank/The Kearney and Berenice Wornall Foundation
University Child Care Center
Kelvin and Ellen Van Osdol
Bill and Gwen VanDerhoef
Verizon Foundation
Ken and Amy Vollmar
Mel J. and Nancy S. Volmert
Ronald M. and Sheryl E. Wachter
Jim C. and Sally Wachtman
Michael S. Waite
Lee Ann Walker
Christine M. Wallace
Dee and Anne Wampler
Elizabeth A. Wanamaker
John E. and Lori K. Wanamaker
Gary and Joy Ward
M. Annette Wardell, MD
Willis J. and Patricia J. Washam
Phyllis Ann Washington
Jeff and Amy Wasson
Christopher and Lisa Waters
Brian K. Weaver
Barbara and Guy Webb
C. Travis Webb
Erma L. Weber
Judy Weekley
Kristina and Nick Weger
James R. Wehr

Jack E. Weimer
Wendy's of Missouri, Inc.
William A. West
West Plains Bank and Trust (David Gohn)
West Plains Chamber of Commerce
West Plains Rotary Club
Kenneth G. and E. Carol Weston
Leonard Wyrick "Rick" Westphal
Wetzel Clinic (T. D. Fleming)
Frederick and Margaret L. Weyerhaeuser Foundation (Stacy Hicks)
Ronnie Whitaker
Kenneth W. and Ann H. White
Mary White
Dr. Thomas G. White
White River Valley Electric Coop
Spook and Liz Whitener
Kay and Courtney Whitlock
John and Novella Whittington
Dr. Anne V. Wigg
Ron and Billie Wiggins
Maggie Wilcox
Betty Wiles
Thomas and Tammy Wiley
Kate Stamper Wilhite Charitable Foundation
John Wilkinson
Dr. Bob and Susan Willenbrink
William H. Darr College of Agriculture Alumni Committee
Dan and Pamela Williams
Dick and Debbie Williams
Mrs. Ralph Williams
Gayle Presley Williamson
Mike Williamson and Carol Williamson
James R. and Jo Ellen Wills
Revs. R. Kenneth and E. Carolyn Wills
James Harfield Wilson
David Winegardner and Cheryl Rabe-Winegardner
James B. Wingfield
Anne Winkler MD, PhD
Troy S. and Sharlene Wisdom
Karol L. and Cecil H. Wise Sr.
Marion and Pat Wolf
Michael G. and Jennifer C. Wolfe
Women's Foundation
Wood and Huston Bank
Kay S. and George C. Wood
Noah K. Wood
Jeff and Sharon Woodward
Rosalie O'Reilly Wooten
Patsy Worrel

Gary and Norma Wortman
Glendal E. and Alice D. Wright
Wright County Industrial Development Authority
Tom Wyrick
Michael A. Yeomans
Noeleen B. Yoakam
J. Kathleen Young
Lane D. Young
Lyn Young
Richard F. and Doris B. Young
Youngblood Nissan Chrysler Kia (John Youngblood)
Zenith Electronics Corporation
Vaughn and Becky Zimmerman

THE FOUNDERS CLUB: IN MEMORIAM

Wavyzelle Abner	Clay Cantwell	Mearl D. Frazier	Opal J. Hooper
A. Duane Addleman, PhD	Jean Cantwell	Jean Freeman	Shirley J. Hubbell
Nancy B. Addleman	Jerry Caplan	Ruth B. Freeman	Greta J. Huff
Mary Jane Akridge	Grace Carr	Charles Royce Fugate	Leo E. Huff
Dr. Robin Amonker	Henry W. Carr	Evelyn Fuldner	Harriett Hutchens
Dr. Mary Anne Andrews	Leigh Donna Carr	William Terry Fuldner	Lewis Gene Hutchens
Herbert J. Arkebauer	Jan Carroll	Janis Fuqua	Freddie D. Inmon
Bill H. Armstrong	Joe Carroll	Bernice H. Gabriel	James B. Inmon
Howard Lee Arthur	Cleo Casady	Charlene Gannaway	Ethel Schoonover Jackson
Madge Arthur	C. Ward Chrisman	Betty Garnett	John C. Jackson
Margaret S. Aude	Georgia R. Christy	Jess Garnett	Sil Johnson
Mervin Aude	Raymond A. Christy, MD	Edith I. Garst	George W. Johnston Jr.
Charles R. Bachus	Alvin L. Clifton	Robert M. Garst	Leo Journagan
Wesley Bair	Leslie Irene Coger	Larry W. Giboney	Bryna W. Justice Jr.
Betty Baker	Earlene B. Coleman	Edwin R. Giddens	Woody Justice
Hardy Baker	Audrey Z. Connery	B. Frank Gillette	Glenn E. Karls
Retha Stone Baker	Paul J. Connery	Ora Dale Ryan Gillette	Ruth Z. Karls
William G. Baker	James H. Cooper	Love L. Gilmore	Grant Kauffman
Rosemary Sullivan Bane	Rosalie Covert	Armin F. Gimbel	Frances R. Keever
Judy Banks	David H. Covey	James O. Glauser	Robert L. Keever
Lawrence E. Banks Jr.	Saundra L. Covey	Virginia Lee Gleason	John H. Keiser
Raymond H. "Butch" Barber	Jim Craig	Dr. Marshall Gordon	Alfred L. King
Jan Barclay	Ruth Craig	Velma Strickland Graff	Betty H. King
Alice Fleetwood Bartee	Walter O. Cralle Jr.	Willard Graff	Carmen King
Alan L. Bates	Dr. Oral B. Crawford	John Griesemer	George H. Klinkerfuss
Margery Bates	Venetta M. Crawford	Gerald E. Grisham	Gary M. Koch
C. Warren Bates	Donna Crosby	Sam Grisham	Grant Wesley Lawson
Cliff Beauchamp	Lee H. Cruse	Mildred Scafe Guest	Barbara A. Layton
Donald H. Beisner, MD	Don C. Dailey	Carl Hamby	James R. Layton
Dr. David O. Belcher	W. V. Davis	Lucille Hamby	Katherine G. Lederer
Imali Berkwitz	Fern DeForest	Donna Hammons	Lyle Leisenring
Charlotte K. Bitter	Max DeForest	John Q. Hammons	Myrtle Leisenring
Robert W. Bitter	The Charles Denney Family	Juanita K. Hammons	Herbert D. Leonard
Vencil J. Bixler	Mahala Denney	Elva A. Harmon	Melba J. Leonard
Byrne Blackwood	Norman Dobson, PhD	Ralph E. Harmon	Sil Leonard
Martin H. Boone Jr., MD	Vivian H. Drago	Jack M. Harris	Max W. Lilley
Rose Marie Boone	Luther H. Dugan	Mildred C. Hawkins	Una V. Lilley
Basil Boritzki	Barbara Firestone Eads	Vern Hawkins	Ellenora Linney
JoAnn Boritzki	Nathaniel Eads	Evelyn H'Doubler	Cathryn Cox Lipscomb
Dr. John S. Bowdidge	Trude Einhellig	Peter H'Doubler	Doris C. Lorz
Brent J. Bowman	William R. "Rick" Eldred	Virginia Rice Heer	Daisy Portenier Loucks
Louis Bozman	Ransom A. Ellis Jr.	Hugh Heller	Martha Love
Robert W. Breuer	Betty F. Ellsworth	Burl Henderson	Terry L. Loveland
Fred A. Brooks	Bette J. Feagan	Helen Henderson	Jerry Lowther
Larry N. Brown	Wilbur S. Feagan	Harold L. Henry	Linda Luke
Robert L. Brownfield	John P. Ferguson	Martha M. Henry	Lucille Magers
Lura Bruce	Seryl Ethel Fisher	Bob Herb	John B. Mahaffey
Lynn E. Bussey	Leslie R. Fite	Duke Hiett	Robert Mahoney
Virginia C. Bussey	Ray Forsythe	Margaret Hiett	Jayne M. Manley
Betty S. Callaway	Susie Forsythe	Ronald E. Himstedt	Ralph K. Manley
Guy D. Callaway Jr., MD	Bill R. Foster	Jim Hollander	Mary Alice Manny
Georgia Y. Calton	Rosemary L. Frankeberger	Smith Holloman	Fred Marty
Ivan D. Calton	Lois Frazier	Leon Hooper	Thelma Matthews

Todd D. Matthews
Joey H. McClure
Marian McNevin
Fred M. McQueary
Shirley G. McQueary
William T. McQueary
Aleene McReynolds
Evans McReynolds
Senator Emory Melton
Duane G. Meyer
Jane A. Meyer
Dorothy Ellen Miller
Jack L. Miller
Melba N. Miller
Wayne Miller
Marian F. Minick
Paul D. Minick
Peter D. Minick
Gene Molnar
Jack F. Moore
Paulette Moore
Jayne G. Morris
Dr. Max K. Morris
W. W. "Webb" Morris
Donnis J. Morrison
Stanton Morrison
Colonel (Ret.) Paul S. Morton
Margaret J. Morton
Jeannette L. Musgrave
Paul Nahon
Jane Hartley Napier
Mrs. Howard K. Nason
Robert Neathery
Mr. Harold Neeley
Don Neely
Barbara J. Oberlander
James O'Bryant
Peggy O'Bryant
Bernadene B. Oliver
George W. Oliver
Graham O'Neal
Edward D. O'Neill
Tom Osbern
Betty O'Sullivan
Thomas O'Sullivan Sr.
Dr. Don Overend
Florence C. Painter
John M. Parker
Ben A. Parnell
Jean H. Parnell
John E. Patton
Harold C. Peacher
John T. Pearl
Tom Pearl

Marjorie Emanuel Penninger
James C. Peters
Bill Petty
James H. Phillips
Lois Bucher Phillips
Patricia R. Pierce
Sally K. Pierce
G. Clair Plank
Robert W. Plaster
Richard E. Pollard
Evelyn A. Porter
Joe Post
Bill G. Prater
Arch E. Pummill
D.J. Putnam
Grace Putnam
Minrose Lucas Quinn
Warren C. Rauch
Milton D. Rafferty
Dorothy Newberry Reavis
John Reed
Vernon Renner
Carol Reser
Helen Gillioz Reynaud
Walter H. Reynaud
Oline Richards
Dr. Carl Riegel
Virginia E. Riley-Guilliams
C.C. Roberts
Jessie M. Ross
Dr. Frederic C. St. Aubyn
Frank Salak
Eugene T. Scafe
Paul R. Scafe
Rose Scafe
Sandra K. Schoen
Hazel B. Scott
Aldo Sebben
Norma J. Sebben
Errett Sechler
Bruce I. Shackter, MD
Trudy Silkwood
Dorothy Martin Simon
Bill R. Smith
Bruce Smith
E. R. Smith
Dr. James C. Snapp
Mary Lee Snapp
L.C. and Edna Snyders
Belva Ross Spangler
Stanlie H. Spangler
Maurine M. Spiva
Norman M. Spiva
Edith Squires

William E. Starnes
Morris Stephens
A. P. Stone Jr.
Faye L. Stone
Wilma Strong
Dr. Charles Stufflebeam
Patricia Stufflebeam
Burnell Joe Sumners
Courtney P. Swindler
Lee Tarvestad
Myron L. Taylor
James F. Tearney
Marguerite L. Teeter
Sarah E. Thompson
Cindy D. Tolbert
David Robert Toombs
Onita F. Trett
C. Louis Van Buren
Thelma Van Buren
Dr. William R. Van Cleave
Victor H. Vogel
Virginia A. Vornauf
Elizabeth Walter
Dr. Bernice S. Warren
Gordon W. Warren
Maxine Millsap Warren
Wallace R. Weber
Bob Weekley
C. R. Wehr
Ruth Weir
Richard P. Wellock
Virginia H. Wellock
Betty Wessel
Don Wessel
J. Marvin Wheeler
Lorene B. Wheeler
Jean Whitaker
James E. White
Nancy Dobyms White
William T. White
Mildred D. Wilcox
Charles W. Wiles
John N. Wiles
Georgiana D. Wiles
Richard Wilkinson
Terry Wilkinson
Virginia Wilkinson
J. Lester Willemetz
Dr. Ralph W. Williams
Billie B. Wingfield
Earl E. Wise
Rex Witherspoon
Rosemary Witt
Lt. Fred Wolter

John R. Womer
Mary L. Womer
Virginia M. Woodring
Tal Wooten
Dr. Mary Jo Wynn
Bessie Yadon
Daniel Layton Yancey
Thelma M. Yancey
Nancy M. Yeomans
Jim A. Yoakam
C. William Young
Lloyd R. Young



The Founders Club 2019 Medallion Honorees

The Founders Club held its annual medallion reception and recognition ceremony Aug. 3 at the Davis-Harrington Welcome Center.

Each year medallions are presented to members whose generosity significantly exceeds the minimum level of giving necessary to qualify for membership. This year, 61 new medallions were awarded to alumni, friends, business and organizations.

THE FOUNDERS CLUB: MEDALLION RECIPIENTS

GOVERNORS

Bobby Allison
Bill and Virginia Darr
Mr. and Mrs. John Q. Hammons
Leo and Jean Journagan
Robert W. Plaster Foundation, Inc.

FOUNDERS

BancorpSouth
Robert W. Bitter, PhD, and
Charlotte K. Bitter
Tom Black
Paul J. and Audrey Z. Connery
Darr Family Foundation
Warren and Anne Davis
The Foster Family
Mr. and Mrs. David D. Glass
The Gourley Foundation
Great Southern Bank
William Patrick and Kimberly
Davis Harrington
Karen Louise Horny
Michelle J. and John M. Hulett
Marie D. Jacobs
KYTV
Bryan Magers
Mercy Health Springfield Communities
McQueary Brothers Drug Company
David B. McQueary
Fred M. and Ramona F. McQueary
Rick and Mary McQueary
Kenneth E. and Jane A. Meyer
Foundation
James L. "Pete" and Sara Morgan
Jim D. and Catherine R. Morris
Charlie and Mary Beth O'Reilly
David O'Reilly
Larry O'Reilly

Ed and Carol Pinegar
Estate of Evelyn A. Porter
Sarah Scaife Foundation, Inc.
Dr. C. Norman Shealy
Jan Stahle
The Strong Family
(Thomas and Wilma Strong,
Stephanie Strong Mitchell, John T.
Strong and David K. Strong)
C. W. Titus Foundation
Estate of Bernice Warren
C. Robert Wehr
James R. Wehr
Dr. Thomas G. and Nancy Dobyms White
Estate of Mildred Wilcox
Rosalie O'Reilly Wooten
Richard F. and Doris B. Young

PLATINUM

William K. Berry
Noel Boyd
Earl Malloy Brake Jr.
Virginia C. Bussey
Larry and Karen Catt
Robert M. and Edith I. Garst
Susan Sims-Giddens and
Edwin R. Giddens
Great Southern Bank
(William V. and Ann Turner)
Ralph and Janet Hagemann
Heart of America Beverage Company
(Jim Ferguson)
Billy E. and Carolin Hixon
Michael and Barbara Ingram
Judith Ann Irwin
Grant Wesley Lawson and
Theresa King Lawson
Fred G. McQueary, MD, and
Terri West McQueary

Mark L. McQueary
C. Michel Minor
O'Reilly Auto Parts
Dr. Rose Mary Owens
Richard E. and Linda J. Pollard
Price Cutter
Errett and Patricia Sechler
Mary Sheid
Texas Instruments Software
Jerry L. Summers Sr.
Sunderland Foundation
William V. and Ann Turner
Estate of William T. White

STERLING

Estate of Wavyzelle Abner
Jerry Atwood
Bank of America - Springfield, Missouri
American National Property and
Casualty Company
Gregory A. and Cheryl J. Beck
Dr. David and Susan Belcher
Jan and William E. Barclay
BKD, LLP
The Boeing Company
Ivan and Georgia Calton
Central Bank/Central Trust
Estate of Lee H. Cruse
Don DeLo
EFCO Corporation
Leslie R. Fite
Ray and Susie Forsythe
Bill R. and Juanitha M. Foster
Greenwood PTA
Harris Corporation
George and Paula Hartsfield
Estate of Vern and Mildred C. Hawkins

Estate of James B. and
Freddie D. Inmon
Bill and Diane Johnson
Journagan Construction Company
(Allen Journagan)
Robert L. and Frances R. Keever
Ursula Lamberson
Lockheed Martin Corporation
Estate of Daisy Portenier Loucks
William G. Magers
John B. and Fredna Mahaffey
McBride and Son Homes
Greg McManus
Ozark Independent Living
Bill and Heather Perry
C.C. Roberts
Bill and Nydia Rowe
Estate of Aldo and Norma J. Sebben
Arch W. Shaw Foundation
Clif and Gail Smart
Allison L. Smith
Southwestern Bell Telephone
Company
Norman M. Spiva
Estate of Faye and A. P. Stone Jr.
Turner Family Charitable Fund
Betty Jeanne Wood Vosburgh Turoff
David A. and Lesley K. Trottier
Virginia A. Vornauf
Christine M. Wallace
Jack E. Weimer
White River Valley Electric
Cooperative
Spook and Liz Whitener
John and Novella Whittington
James B. and Billie B. Wingfield
Estate of Fred Wolter

PRESIDENTS

H. Douglas and Hilda Adams
Albertsons
Jeffrey and Lisa Allen
Mary Anne Andrews
Audio Acoustics, Inc.
Howard and Linda Bailey
Pat and Hilda Baker
William G. and Retha Stone Baker
James and Deborah Bass
Estate of Alan L. Bates
Cliff and Jo Helen Beauchamp
Bill and Becky Bergmann
W. Wayne and Janet Bischler
BKD Wealth Advisors
Greg and Tara Boehne
Gregory F. and Paula D. Boone
Rose Marie and Martin H. Boone Jr., MD
Basil and JoAnn Boritzki
Michael D. and Judy A. Breeding
Estate of Marianna Brown
Darryl and Marilyn Bueker
Burlington Northern Santa Fe
Foundation
Bernard G. and Pamela N. Burrier
Butler, Rosenbury and Partners
David B. and Sandra D. Byrd
The Carthage Foundation
Howard and Nadia Cavner
C. Ward Chrisman
Allan Stuart and Rosemond
Owens Clapp
Alvin L. and Grace J. Clifton
ConocoPhillips Inc.
Dr. Francis and Judy Corry
Nancy R. Cuniff
Sharon and Dio Daily
The Delta Foundation
Estate of Mahala Denney
Norman Dobson, PhD
Domino's Pizza – Art Hurteau and
Marty Prather
Dr. Roger and Jacquie Dowdy
Vivian H. Drago
Janice R. Duncan
Alva and Patricia Ellison
R. Gary Finley
Mr. and Mrs. J. Howard Fisk
Larry and Glenna Frazier
Bernice H. Gabriel Trust
Tim Foote
The Gannett Foundation
Dr. Marvin L. and Bettye Fowler
Mr. and Mrs. Jess Garnett
Dr. Walter and Martha Gaska

Jerry and Joan Gentry
Estate of B. Frank and Ora Dale
Ryan Gillette
Estate of Love L. Gilmore
Gregory D. and Shannon R. Glass
Mrs. James O. Glauser
David Gohn
Jeanette Grisham
Do Won and Myung Yun (Kim) Hahn
Hammons Products Company
June S. and Sam F. Hamra
Michael L. Hanover and
Karen L. Hanover
Ralph E. and Elva A. Harmon
Dennis and Anne Heim
David R. and Donna K. Henderson
Estate of Burl and Helen Henderson
Harold L. and Martha M. Henry
Hood-Rich, Inc. Architects, Engineers
and Land Surveying (Mr. and Mrs.
Jack K. Hood)
Estate of Smith Holloman
Sally Lynn Hubbard, MD
Harriett Hutchens
J. E. Dunn Construction Company
Ethel Schoonover Jackson
JMS Charitable Foundation
Carol Jones
Jim and Pat Jones
Grant and Mimi Kauffman
William T. Kemper Foundation
Ketchum Charitable Foundation
Gordon and Laura Kinne
William E. Kirkman
George H. Klinkerfuss
Don and Lea Landon
Dr. Katherine Lederer
The Lemberger Company
Sil Leonard and Elaine Johnson
Kevin and Amy Lines
David and Christina Litherland
Randy and Johnelle Little
Doris C. Lorz
Guy and Dorothy Mace
Neosha and John Mackey
Bill and Doranna Manary
Dennis K. Marlin (Marlin Network Inc.)
E. A. Martin Company
(Mr. and Mrs. Donald G. Martin Sr.)
Chip McGeehan
Maxine McGruder
William H. and Alison N. McQueary
Estate of Aleene and Evans McReynolds
Stan and Cindy Melton
Fred J. Mertz
Dorothy Ellen Miller and
David Emerson Miller

The Missouri Insurance Education
Foundation
Morgan Stanley — Springfield,
Missouri Office
Bill Mueller
NBI, Inc.
The Samuel Roberts Noble
Foundation, Inc.
Noble World Communications
(Mr. and Mrs. Robert B. Noble)
The Oldham Family
Nancy J. and Gregory P. Onstot
Bud E. Orchard
Daniel F. and Linda O'Sullivan
The Bee Payne Stewart Foundation
Tom and Peggy Pearl
Pellham-Phillips-Hagerman
Pepsi-Cola General Bottlers, Inc.
Robert L. Price
D. J. and Grace Putnam
The Anne K. Raikos Charitable
Supporting Foundation
Alan Ramseur
Carol J. and Robert L. Reed
John Reed
Vernon and Fay Renner
Charles and Cindy Rodgers
Estate of Jessie M. Ross
Ryder System, Inc.
St. Louis Chapter of the Risk Insurance
Management Society, Inc.
Frank J. Salak
Virginia Gohn Sapp
Paul R. Scafe
Corrie M. Sifers and Morgan P. Jones
Ralph and Karen Smith
Smith-Glynn-Callaway Medical
Foundation
Mary Lee Snapp
Ron and Lezah Stenger
Tandy Corporation/Radio Shack
Richard L. and Rose Ann Splitter
James F. and Mary Asher Tearney
Mr. and Mrs. Lynn H. Thompson
Jack and Stacey Thurman
Gary and Sydney Tompkins
John E. and Lori K. Wanamaker
Willis J. and Patricia J. Washam
C. Travis Webb
Wendy's of Missouri, Inc.
Maggie Wilcox
Rosemary Young Witt
Dr. Mary Jo Wynn
Estate of C. William Young
John and Cathy Youngblood
Vaughn and Becky Zimmerman

SILVER

Helen and Jim Adams
AECI Associated Electric Cooperative
Renelda Arkebauer
Margo S. Armstrong
Jim and Jane Atteberry
Matthew and Stacey Bailey
Baker Family Charitable Trust
Hardy and Betty Baker
Jon T. and Jo A. Baker
Estate of John L. and Rita M. Bangs
Mr. and Mrs. Raymond H. "Butch" Barber
Sharon Kay Belt
Dr. Stephen C. and Imali Berkwitz
Richard N. Biagioni
Bryne and Margaret Blackwood
Brewer Science
S. Gaylen Bradley and Judith S. Bond
Estate of Lura Bruce
Dr. Steven G. and Nancy Lee Campbell
Clay and Jean Cantwell
Mark and Teresa Carroll
Mona J. Casady
Michael and Lisa Casey
John and Janice Catau
Thomas G. Cave Jr.
Century Bank of the Ozarks
(John and Chris Harlin)
Lynn Cline
Dan Cobb
William H. Coleman Jr. and Earlene
Barber Coleman
Compugraphic Corporation
Conco Companies (Thomas H. Baird, III
and Robert M. Baird)
Cooper Foundation
Ric L. and Melanie Cooper
Rosalie Covert
Crosfield Electronics, Inc.
Stanton and Ethel Curbow
Gregory L. Curl
Nancy H. Curl
Custom Computer Consultants, Inc.
Don C. and Virginia Pummill Dailey
Sandra D'Angelo
Larry and Marilyn Daniel
Darden Restaurants Foundation
William H. Darr College of Agriculture
Alumni Committee
Max and Fern DeForest
Dermatological Product Development
Course
Carl and Jan Dickey
W. Brent and Jennifer Dunn
Larry and Julie Ebersold
Dana T. and Sharon L. Edwards

W. Anson and Betty Elliott
 Gordon and Glenda Elliott
 Kevin and Marla Elliott
 Frank and Trude Einhellig
 Robert Lloyd Ernst, Chemistry
 Emeritus
 First Home Savings Bank
 David Kerrigan Fly and Adrienne
 Anderson Fly
 Dale Freeman
 Gloria J. Galanes
 Gary V. and Karen Garwitz
 Gateway
 John Goodman
 Greenwood Athletics and Debate
 Booster Club
 Conrad and Bonnee Griggs
 Guaranty Bank
 Mildred Scafe Guest
 Brian and Kimberly Hammons
 Fred and Faunlee Harle
 Harlin Family Foundation
 Jack and Janice Harris
 Dr. George J. Heinz and
 Dr. Kathryn Hope
 Shaun D. Hennessey
 Janet L. and Roland M. Higdon
 Cynthia F. Hollander
 Hotel Nikko-San Francisco
 Jack and Shirley Hubbell
 Tonni Beth VanHook Hudson
 Rex and Sharon Hunt
 Derek B. and Melodee L. Hunter
 Cody W. and Marilyn Ice
 Jack Henry and Associates
 Dave and Tammy Jahnke
 R. Bruce and Vicki L. Sterling Johnson
 Woody Justice
 Millicent L. Kalil
 J. George and Eleanor M. Kambouris
 Ann M. Kampeter
 Estate of Ruth Z. and Glenn E. Karls
 Patricia R. Kimball
 Betty H. King
 Jesse Kuhn
 Andrew V. Lear and Cindy K. Lear
 Max W. and Una V. Lilley
 Paul Lindsey
 Wagner and Martha Love
 Terry L. Loveland
 Oneata and Woodrow Loveland
 Hazel and Harmon Lewis
 Louise Johnston Lunn
 Robert and Joyce Mahoney
 Eddie and Jennifer Marmouget
 Tom and Beth Marty

Fred and Evelyn Maxwell
 Gordon and Mona McCann
 Barbara Carlson McCormick
 Clarence E. McElroy
 William T. and Shirley G. McQueary
 Senator Emory Melton
 Dr. Davis and Sarah H'Doubler Meugge
 Mr. and Mrs. James S. Meyer
 Rich and Cindy Miller
 Wayne and Melba Miller
 Worth Robert Miller
 Missouri Higher Education
 Loan Authority
 Missouri Seedmen's Association
 Missouri State University Residence
 Hall Association
 W. W. Morris
 Stanton and Jean Morrison
 James C. and Roberta H. Moyer
 Denver and Seth Myers
 Mrs. Howard K. Nason
 New York Study Fund
 Michael T. Nietzel
 Richard and Teresa Ollis
 Mr. and Mrs. Thomas O'Sullivan Sr.
 Dr. Don and Linda Overend
 Ozark Chapter Missouri Society of
 Professional Engineers
 Ozarks Area Chapter RIMS
 Ozarks Medical Center
 Estate of Florence C. Painter
 Dr. J. B. Petty
 Phillips Petroleum Company
 Physical Therapy Specialists Clinic,
 Inc. (Mary Sheid)
 Gayle M. Presley Williamson
 Arch E. Pummill
 Jason and Bertie Rader
 Milton D. Rafferty and Emma
 Jean Rafferty
 Linda Regan and Steve Brooks
 Don Reser
 Dr. Alan and Darla Rosen
 Michael and Amy Schnake
 Howard R. Schwartz, MD, and
 Ruth Grant, MD
 Jill E. and Richard A. Seagrave, MD
 Dr. Kishor Shah
 The Chris Sifford Memorial Foundation
 Richard and Carol Silvey
 Charles and Lisa Slavens
 E. R. Smith
 Sodexo Dining Services
 Springfield Black Tie, Inc.
 Springfield-Branson National Airport
 Springfield Business Journal

Springfield Trust Company
 Sprint Foundation
 State Farm Mutual Automobile
 Insurance Company
 State Street Corporation
 Earl A. Steinert
 Floyd L. and Martha L. Sweeney
 Ron and Sue Carrol Terry
 Kent and Barbara Thomas
 Dorothy and Bob Thurman
 Jeff and Lynn Tynes
 U.S. Bank of Springfield
 C. Louis and Thelma Van Buren
 Jim C. and Sally Wachtman
 Lee Ann Walker
 Mrs. C. Wallace Walter
 Judy Weekley
 Wendy's of Missouri, Inc. —
 June S. and Sam F. Hamra
 West Plains Bank
 Leonard Wyrick "Rick" Westphal
 Kate Stamper Wilhite Charitable
 Foundation
 Richard and Virginia Wilkinson
 B. G. and Ruth Marie Williams Trust
 Dan and Pamela Williams
 James H. Wilson
 Marion and Patsy Wolf
 Wright County Industrial
 Development Authority
 Dorann Lewis Thoreen

BRONZE

Dr. Yohannan T. Abraham and
 Mrs. Tessy Abraham
 Stephen and Mary Ellen Ache
 Advanced Relational Technology
 Air Evac EMS
 American Postal Workers Union,
 AFL-CIO, Local 888
 AmWINS Group, Inc.
 C. David Andereck and
 Barbara S. Andereck
 Archimica, Inc.
 Drs. George and Carrie Arquitt
 Nita Jane Ayres
 Wendell and Jane Bailey
 Rob and Sally Baird
 Don E. and Betts Baker
 Larry and Judy Banks
 Barclay Enterprises, Inc.
 Jackie Barker
 Wayne C. Bartee
 Bass Pro Shops (John L. Morris)
 Rob Beeson and Laurie Mitchell
 Judith A. and Donald H. Beisner, MD

Dr. Drew Bennett
 Theresa Bettmann in Honor of Rev.
 John Bettmann
 Shawn and Allyson Bice
 Patricia A. Birkes
 Donald E. and Mary J. Bonacker
 Andrea G. and Stephen R. Bough
 Brent J. Bowman
 Louis Bozman
 Robert Bradley
 Wilbur H. and Patsy M. Bradley
 Michelle M. Brekken
 Jim Bremer
 Franklin G. and Shirley A. Bridges
 Cliff and Sharon Brown
 George Warren Brown Foundation
 James E. Brown
 Tom and Carol Brown
 Estate of Robert L. Brownfield
 Stephanie M. Bryant
 Mark and Debbie Brueggemann
 David W. Boker, Inc. and Associates
 Steven M. and Ellen Bullard
 Raymond A. Burger
 Buffy and Geoffrey H. Butler
 Robert H. Calbert
 Joe and Marie Carmichael
 Robert and Margaret Carolla
 CDC of Springfield, Inc.
 Community First National Bank
 Robert C. Cope Jr. and Norma L. Cope
 Cerner Corporation
 Bill and Maret Cheek
 City of West Plains
 Lisa Dewoody Clark
 Leslie Irene Coger
 Collective Brands Foundation
 Jeff Collins
 John R. Cook
 David H. and Sandra L. Covey
 Chris-Ann Crabtree
 Jim and Ruth Craig
 Walter O. Cralle Jr.
 Chad E. and Chasidy R. Crissup
 Crosslink
 Trevor J. Crist
 Melissa Dallas and Carl Riegel
 Delta Zeta Sorority - Epsilon Nu Chapter
 DeWitt and Associates, Inc.
 Dickinson Foundation
 Dr. Earle and Dalene Doman
 The Dow Chemical Company
 Foundation
 Luther H. Dugan
 Michael J. and Susan W. Duggan

Ellis, Ellis, Hammons and Johnson
 James C. and Sally A. England
 Drs. Thomas F. and Susan W. Essman
 Jana Kjersten Estergard
 FCS Financial
 Bob Ferber
 Drs. Jay Fiene and Jan Muto
 Robert A. Foster
 Dr. David M. and Mrs. Deborah S. Fraley
 William W. Francis Jr. and
 Beverly A. Francis
 Mearl D. and Lois Frazier
 Rob R. Freeman
 Charles Royce and Rita Fugate
 The Rob Fulp Family
 Ben Fuqua
 Mr. J. Ryan Gamble and
 Mrs. Cristi C. Gamble
 Dr. Larry L. George
 Larry W. and Rebecca J. Giboney
 Drs. Marshall and Annette Gordon
 Mrs. Willard Graff
 Greater Springfield Board of Realtors
 Greek Week Committee
 Walter and Kay Green
 Marty Greene and Jack E. Casper Jr.
 John and Brooke Griesemer
 Wyman and Sue Grindstaff
 Estate of John E. Grinstead
 The Grisham Family Trust
 Kenneth D. and Nancy J. Gunter
 Gregory and Carol Ann Haake
 Dr. Sondra F. and Jerry L. Hagerman
 R. Dwain and Donna Hammons
 William R. Hardie
 Estate of Harold "Speedo" Harmon
 Dr. and Mrs. Matthew A. Harthcock
 Winston M. Haythe
 The Heartland Regional Council
 of the Institute of Management
 Accountants
 Terry J. and Gretchen E. Heinz
 David R. and Donna K. Henderson
 Bob and Virginia Herb
 Dr. Jill L. Heyboer
 Highland Springs Country Club
 Harry and Susan Hom
 Richard D. Houk
 Alexander and Barbara Hover
 Leo E. and Greta J. Huff
 Scott and Jennifer Huff
 Art and Dianna Hurtado
 Cody W. Ice II
 Joseph and Jenifer Insley
 International Brotherhood of
 Electrical Workers
 International Brotherhood of Electrical
 Workers, District 11
 Linda S. and Jerry G. Jared
 Bruce and Diane Jenkins
 Fritz M. Johnson, MD
 Patricia S. and George W. Johnston Jr.
 Robert G. and Cheryl Jones
 The Killian Group of Companies
 Paul and Janet Kincaid
 Robert E. and Barbara R. Kipfer
 Estate of Gary M. Koch
 Koch Industries, Inc.
 Dr. Cameron and Mrs. Susan LaBarr
 H. Clarence Lawson
 The Leamy Family
 Leggett & Platt, Incorporated
 Liberty Bank
 Life Insurance Association of Missouri
 Jack and Cathryn Cox Lipscomb
 Larry W. and Tracy F. Lipscomb
 Camille B. and Alan W. Lockhart
 Dr. Herbert L. and Mary Beth Lunday
 Rob Lurvey, Steve Lurvey and
 Cindy Lowe Lurvey
 Mitchell L. and Roberta M. Marks
 E. A. Martin Machinery
 Charles R. Marshall Jr.
 John and Jill Martin
 Marty Marty
 Thelma F. Matthews
 Ken McClure
 William H. and Janice McDonald
 Terry O. and Mary Kay Meek
 'Lyn Meyer
 MFA Foundation
 Dennis and Lorie Miller
 Mr. and Mrs. Jack L. Miller
 William W. Miller Jr.
 Estate of Paul D. and Marian F. Minick
 Missouri Farm Bureau
 Missouri State University Dames
 Dr. Mollie Autry Molnar and
 Mr. Gene Molnar
 Joe and Tammy Monk
 Monsanto Company
 Marilyn Amelia Moore
 Angela R. Morelock
 Wayne D. and Kathy J. Morelock
 Dr. Charles H. and Robin L. Morgan
 William and Margaret Moskoff
 Jeannette L. Musgrave Charitable
 Foundation
 Nabholz Construction Corporation
 (Lowell Thomas)
 Jane Hartley Napier
 Robert Neathery
 Ann Neu
 Leo Neu III
 New Life Treatment Centers, Inc.
 Dr. Gary J. Nie
 David Harrell and Mabel
 Jackson Northrip
 Estate of James and Peggy O'Bryant
 M. Ann Page
 Jack and Inez Pahlmann
 Alex N. and Nila C. Paradowski
 John M. and Mildred C. Parker
 Pasta Express
 Clyde and Judy Paul
 Galen and Marleen Pellham
 Richard A. Pendleton
 Penmac Staffing Service, Inc.
 Dr. Raffaele Pennella and
 Dr. Maryam Mohammadkhani
 Vijay and Aarti Pillai
 Drs. Thomas G. and Kimberly A. Prater
 Walter H. and Helen G. Reynaud
 Frances D. and Robert D. Reynolds
 J. B. Reynolds Foundation
 Linda K. Robertson
 Rohm and Haas Company
 Paul & Debbie Rollinson
 Dr. Frederic C. St. Aubyn
 Safety National Casualty Corp.
 Andy Salmon
 Mrs. Robert L. Sanditz
 Drs. Kent and Ann Schaller
 William C. and Susan F. Schindler
 Bruno and Karen Schmidt
 Karl and Sabine Schmidt
 Karen W. and J. Michael Schneider, MD
 Schneider Foundation
 Steven L. and Sandra K. Schoen
 David J. and Mary C. Schulte
 Dr. Andrew and Kamille Schultz
 Estate of Hazel B. Scott
 Patricia K. Scott
 Dr. Richard and Jaimee Seagrave
 Karen Mason See and Andrew See
 Robert and Katy Shaw
 Shelter Insurance Foundation
 Larry Sidwell
 Bob Signaigo
 Dorothy Martin Simon
 Reba Sims
 Tom and Marsha Slaight
 Cathy and Troy Smith
 Robert E. and Judith A. Smith
 Jarrod R. Sohosky
 Joe Spears
 Springfield Contractors Association
 Vicki J. Spoonhour
 The Squires Family
 State Farm Insurance Companies
 Estate of Ruby Stecker
 Byron and Elizabeth Stewart
 Mark and Tina Stillwell
 Ben and Kristi Stringer
 Mr. Richard G. Sullivan
 Bruce and Margaret Swisshelm
 George D. Theodorakos
 Bradly D. Thomas
 Clifton C. and Sarah E. Thompson
 William Scott Thompson
 Robert L. Trewatha
 James E. and Candace M. Trogolo
 UMB Bank/The Kearney and
 Berenice Wornall Foundation
 Verizon Foundation
 Ronald M. and Sheryl E. Wachter
 Gary and Joy Ward
 Phyllis Ann Washington
 Guy and Barbara Webb
 Wallace R. and Erma Weber
 Dr. Brian K. Weaver
 Don and Betty Wessel
 West Plains Rotary Club
 J. Marvin and Lorene Wheeler
 James E. and Mary White
 Kenneth W. and Ann H. White
 Thomas and Tammy Wiley
 John and Terry Wilkinson
 Dr. and Mrs. Ralph W. Williams
 Ron and Billie Wiggins
 Anne Winkler, MD, PhD
 Rex Witherspoon
 David Winegardner and
 Cheryl Rabe-Winegardner
 Mike and Jenny Wolfe
 Jeff and Sharon Woodward
 Glendal E. and Alice D. Wright

The Bears Fund

The Bears Fund is the annual fundraising program for men's and women's intercollegiate athletics at Missouri State University. The Bears Fund is an opportunity for you to support our hard-working student-athletes while receiving gratitude, recognition and exclusive benefits in return.

Benefits of membership

- Your gift is tax-deductible.
- You will get exclusive email updates.
- You can expect discounts at partner businesses with your donor card.
- You will receive a 10 percent discount at the MSU Bookstore.
- You will be notified early about concerts and events.
- You will be recognized on our website and game programs.
- You will receive team schedule cards and a Bears window sticker.

Become a member

To join The Bears Fund, simply make a donation of cash, personal property, goods or services, real estate or appreciated securities to the athletics program. To make a gift, please contact The Bears Fund office in the athletics development office:

 BearsFund@MissouriState.edu

 417-836-4143

 MissouriState.edu/TheBearsFund

THE BEARS FUND MEMBERSHIP

Capstone Level

John Q. Hammons Foundation
Robert W. Plaster Foundation

AD Circle

Bobby Allison
Dr. Michael and Krystyna Clarke
Elaine and Loren Cook II
Great Southern Bank
Hiland Dairy Foods Co, LLC
Robert and Lawana Low
Doug and Erin Lurvey
Maxine McGruder
David McQueary
Med-Pay, Inc. – The Kinne Family
The Payroll Company – TPC
Ed and Carol Pinegar
Prime Inc.
Bill and Nydia Rowe
Tom Strong
Bill and Ann Turner

Hall of Fame Level (\$10,000-\$19,999 annually)

Bee Payne-Stewart Foundation
Behlmann GMC Van and Truck Center
Brinkmann Insurance & Financial,
LLC-John and Missy Brinkmann
Pam and Bernie Burrier
Larry Catt Law Office, LLC;
Larry and Karen Catt
Frank L. and Wanda Clark
Commerce Bank
First Independent Bank
Jim and Anna Ferguson
Gary and Karen Garwitz
Patty Johnston and Jordan Johnston
Bill and Susan Kirkman
Millwood Golf
David and Stacey O'Reilly
O'Reilly Hospitality Management
Ozark Chevrolet
Joe and Jennifer Passanise
Carolyn Penner
Pinegar Chevrolet

Queen City Roofing & Sheet Metal -
Larry Stock and Michael Katrosh
The Big Lot – Reliable Chevrolet
Dr. Alan and Darla Rosen
Mike and Amy Schnake
Dr. Rick and Jill Seagrave
SGC Foodservice
Trailer Corp.
Lynn and Karen Thompson
David and Lesley Trottier
John and Novella Whittington
Youngblood-Nissan-Chrysler-Jeep-Kia

All-American Level (\$4,000-\$9,999 annually)

JAll Klear Plumbing, Heating &
Cooling, Inc.; Garen and
Abbi Gilmore
Jeffery and Lisa Allen
Andy's Frozen Custard
Bass Print Solutions
Bob and Susan Beine – Republic Ford
Wayne and Janet Bischler

Greg and Tara Boehne
Charlie Brown
Darryl and Marilyn Bueker
Corwin Dodge Ford
Corwin Dodge Ram
Andrew Covington
Crown Distributing Company –
Gelner Families
Warren and Anne Davis
Malcolm and Janis Decker
Linda E. Dollar
David and Robin Donelson
Gordon and Glenda Elliott
Elliott Lodging, LTD
Barrett Fisk and Bryan Fisher
Steve and Peggy Foucart
John D. and Susan A. Foster
Rob Fulp/FSC Bank
Gregg and Carla Groves
Guaranty Bank
Fred and Faunlee Harle
Dorothy Hawkins
Heim, Young & Associates

Bob and Dani Helm
 Bud, Debbie and Will Hickman
 Independent Stave Company, LLC
 John and Connie Johnson
 Kim and Stan Lippelman
 KADI Radio
 Jeffrey and Karen Kramer
 Randy and Johnelle Little
 Robert and Alice Lunn
 Bryan and Chris Magers
 Randy and Renee Meents
 Richard and Teresa Ollis
 Steve and Kay Probstfield
 Jason and Bertie Rader
 Lynn and Judy Reeves
 Jon and Kathy Risdal
 Rite-Way Concrete Products CO
 John and Jenilee Russell
 Thomas and Joyce Samsel
 Mark Sharp
 Clif and Gail Smart
 Mike Swann, MD
 Ron and Sue Carrol Terry
 The Carpet Shoppe, Inc.
 William J. Thomas
 Terry Nunn and Kelly Kirkpatrick
 Aaron and Will Sachs
 Mark Sharp and Ann Howard
 Charlie and Mary Beth O'Reilly
 Larry O'Reilly
 Oasis Hotel & Convention Center
 David and Lisa Officer
 Gary Wood Auto
 Wendy's - Sam, June and Mike Hamra
 Danny and Pam Southard
 Richard and Rose Ann Splitter
 Ron and Sue Carol Terry
 William J. Thomas
 Trailiner Corp.
 Mike and Marla Treadwell
 Craig and Sharyn Wagoner

Champions Level
 (\$2,000-\$3,999 annually)

APlus Payroll
 Brian and Gwynda Allen
 Ample Industries
 Gerald and Sharon Anson
 Tommy and Jill Ayers
 Randy and Pam Bachus
 Ron and Paula Baird
 Terrell Barkett
 Bill and Dolores Bauer
 John and Dawn Beazley
 Barbara Bumberry

David and Sandra Byrd
 Warren Collins -
 Land O' Lakes Insurors
 Custom Protein Corp - Tim Carter
 Les and Donna Charles
 William and Rhonda Christopher
 Bob L. Cline
 Irwin and Susan Cohen
 Conco Companies, Inc.
 Don and Cathy Cooley
 Brad and Melissa Coy
 Sydney Croxdale
 Mike and Krista Cully
 John and Toni Cunningham
 Custom Protein Corp - Tim Carter
 Kerry and Maggie Dickerson
 Rebecca Ann Drennan
 Bill and Merrill Drummond
 Don and Linda Duncan
 Joe Bob and Rose Lynne Dunn
 Danny Edwards - Connelly Plumbing
 Keith and Sue Ekstam
 Elite Promotions, Inc.
 Al and Pat Ellison
 Perry W. Epperly
 Doug and Julia Evans
 C. Byron and Mary Faulkner
 Linda and Tim Fowler - State Bank
 W. Thomas Fowler Jr.
 Don and Marge Francis
 Larry and Glenna Frazier
 Ben and Kim Garwitz
 Britt and Maribeth Gardner
 Julie and John Germann
 Kevin and Shelley Gerschefske
 Don and Judy Gibson
 Walter and Kay Green
 Art and Lisa Hains
 Hampton Inn and Home2 Suites
 John and Julie Hartley
 Nila and Everett Hayes
 Bud and Debra Hickman
 Bill and Linda Hobbs -
 Kwik Kar Service & Repair
 Dr. William H. Holmes and
 Linda Virdon Holmes
 Jack and Fran Hood
 Donna Howerton
 Jim Huff
 Hutchins Advertising
 Britton Jobe
 Bruce and Vicki Johnson
 Mike and Peggy Jurgens
 KS Wood Products, Inc.
 Al and Trish Latall
 Carey and Tammy Lewis

Bob and Alan Lockhart
 Robert and Jennifer Mahaffey
 John and Lora Maritt
 Tom and Beth Marty
 Drs. Gerald and Julie Masterson
 David and Pat McBeath
 Dr. Fred and Terri West McQueary
 Midwest Rug Company
 Darrell and Blye Moore
 Marilyn Amelia Moore
 James F. and Lorna Morris
 State Rep. Lynn and Jan Morris
 Patrick Murney
 Bill and Debbie Nesbitt
 Tom and Stephanie O'Neal
 Dr. Rose Mary Owens
 Al and Patti Penny
 Marty and Karin Prather - Domino's
 Tad and Amy Pinegar
 John Pratt
 Bruce and Pat Renner
 Gary and Ruth Schafer
 Dr. Carol L. Scott
 Errett and Pat Sechler
 Blake and Cathy Smith
 Burnie and Marilyn Snodgrass
 Gary Stewart and John Shepherd
 Gary and Sue Stiles
 Rusty and Sara Still
 Mark and Tina Stillwell
 Bill and Shirley Virdon
 Dale and Pat Wagner
 Craig and Sharyn Wagoner
 Jack E. Weimer
 John and Cindy Wetzel
 Dr. Brad and Chris Wiley
 Dr. Marc and Mary Lou Wittmer

Diamond Level
 (\$1,000-\$1,999 annually)

Nixa Mini Storage
 Rob and Connie Alberty
 Drs. Paul and Elizabeth Andrews
 Ken and Shirley Applegate
 Kevin and Lynn Ausburn
 Norb and Ann Bagley
 Scott and JoAnne Bailes
 Jon and Jo Baker
 Buddy Ball and Virginia Jones
 Mert and Linda Bancroft
 Pam and Ron Barber
 David, Donna and Denae Beckett
 Richard Fischer and Michelle Bishop
 Jim and Janice Brandenburgh
 Bill and Judy Bretall

Steve Brooks
 Richard and Karen Cameron
 Brian and Susan Camey
 Steve and Diana Campbell
 Callie Carroll
 Jerry and Margaret Carroll
 John and Janice Catau
 Dan and Merodie Clark
 John and Ann Collard
 Dennis and Sherry Cook
 Diane and Wes Cooper
 Jim and Pat Cosgrove
 Croley Insurance & Financial Inc/
 Tom and Andrea Croley
 Beau and Sharon Culbertson
 Darrell and Danette Proctor
 Bill and Virginia Darr
 Ervin and Sandra Dock
 Ed Donnell
 Tom and Nancy Dornan
 Danny and Myndi Downs
 Suzanne Dukewits
 Ronnie and Janice Dye
 Larry and Patricia Ellison
 Jerry and Lynn Elton
 Richard Fischer and Michelle Bishop
 Dana and Christina Ford
 Ben Fuqua
 Roger and Cathy Garner
 Don and Betty Golik
 Doug Green
 Conrad and Bonnee Griggs
 Larry and Rita Gurian
 Larry Halverson
 Brian and Kim Hammons
 Joe and Sara Hankins
 Fred and Faunlee Harle
 Patty Harralson
 Dr. John and Kim Heard
 Bill Hedrick
 Holly Hesse
 Billy and Carolin Hixon
 David and Susan Horsey
 John Howard
 Donna Howerton
 Dan and Ginny Imhoff
 Gary and Kathy Irwin
 William and Ramona Jameson
 Stan Jinks
 Rich and Janet Johanningmeier
 William and Joyce Kastler
 Gary and Sarah Overstreet Keen
 Kathleen Kennedy
 Larry King
 Bob and Barbara Kipfer
 Mark Lee

Pat and Patti Leeper
Debbie Letterman
Carolyn (Vienhage) Little
Dr./Mrs. Jerry Long
Rodney and Kathleen Loomer
Larry and Sherry Lowery
Dick and Sally Luke
Joe and Margaret Lurvey
Charlie and Judy Lyons
Charles and Diana Mahaffey
Dr. Jeff and Mary Maloney
Donald G. and Ruth D. Martin
Marty Marty
Drs. Gerald and Julie Masterson
Sheryl McBeath
Joe and Sue McDonald
Jim and Jana McDowell
Mark and Jennifer McNay
John McWilliams
Lloyd and Wanda Meacheam
Jack L. and Wanda Merritt
Joanna Michael
Kerry and Noma Montgomery
Mark and Jackie Moore
Cletus and Joyce Morton
Jack and Kathy Munsey
Max and Wanda Murphy
Nail Dental, LLC
Craig and Kristen Naugle
Tre and Marsha Neu
Jim and Peggy Newbold
LaReva and Jim Newcomer
Evelyn L. Nichols
Nancy and Greg Onstot
Jim and Sybil Osborn
Jeff and Kim Parkison
Phillip and Debbie Parman
Ryan and Lacy Patterson
Dr. David and Brenda Paul
Leslie A. Peck
Tom and Jami Peebles
Brett and Marriann Picotte
Darrell and Danette Proctor
Carmen Pyles
Red Door Dance Company
Jerry Redfearn
Karen Reed
Dr. W. Curtis and Sandy Rogers
Scott and Mary Routh
William and Teresa Russell
Mark and Shannan Samuels
William and Susan Schindler
Bruno and Karen Schmidt
Steve and Cheryl Scroggins

George Scroggs
Pat and Pam Sells
Harold and Darlys Shelton
Larry and Carolyn Shields
Ryan and Elizabeth Sivill
Randy and Gayle Smart
Mike Smith
Rob and Christy Snelling
Harley and Betty Jo Snyder
Mark and Sylvia Speight
Bill and Rita St. Gemme
Stuart and Pam Stangeland
Tony and Andrea Still
Kent and Suzanne Stringer
Mary and Bob Stufflebam
Mary Asher Tearney
Stanley and Maxine Thompson
Todd and Cindy Thornhill
Blair and Dorothy Turrell
Gary S. and Janna Venable
Ernest Venter
Betty Ward
Judy Weekley
Dave Williams
Max and Cheryl Willis
Terry and Marianna Wise
Jeff and Monica Woods
Dr. and Mrs. Leo Wyrsh
James and Sherry Young

Gold Level (\$600-\$999 annually)

Rod Anderson
Nita Jane Ayres
Mark A. Beas
Ann Benson
Bernard and Roberta Brownell
Rebecca Burwick
Chuck and Cindy Busby
David and Julie Caffey
Larry and Linda Carter
Kristi and Tyson Christy
Denny and Marilyn Dennis
Rick and Eileen Dodson
Heather and Matthew Elliff
Judy M. Everett
Tom and Allyson Finnie
John and Freda Gentry
Mike and Barbara Gentry
Chad and Gail Gilmore
Larry and Paula Glossip
Jim and Sherryl Hair
Bill and Marti Helfrecht
Jerry and Kris Henderson

Kirk A. Heyle and Lori G. Heyle,
Heyle Realtors & Counseling
Services, LLC
Gene and Sara Hill
Malcolm Hukriede
Paul and Doris Hungerford
Everett and Norma Jackson
John and Nancy Leach
David and Karen Lehmann
Carma Little
Jeff and Terianne Love
Larry and Carol Mahoney
Powell and Cynthia McHaney
Larry and Beverly McKinney
Ed and Jane Mellers
Rich and Cindy Miller
Kyle and LeeAnn Moats
William and Ginya Moore
Jim and Ila Mullings
Frank and Marge Murphy
Gary and Judy Parkison
Paige Jenkins Parrack
Jim and Cindi Pass
Chuck and Cheryl Patterson
Peggy Pearl
LeeRoy and Mary Petlitzer
Mark and Joey Powell
Donna J. Powers
Dr. Kathy Pulley
Carol Pyeatt
Phil and Nancy Raider
RES Real Estate Services, Inc.
Steve and Pat Robertson
Rob and Ann Robinson
Dick and Susan Scott
Charley and Betty Stark
Kory and Erin Stubblefield
Pat Summerfield
Don and Alberta Tate
Connie Thiede
Kent and Sharon Topliff
Bert Twibell
Junior and Sharon Wells
Florene Williamson
Jacque Wimmer

Silver Level (\$300-\$599 annually)

Dr. Ray and Nancy Asay
Clyde Baker
Dan and Mary Barnard
Kayla Bell
Dr. Chris Bersted
CJ Bierschwal

Edith and Hal Buchert
Carolyn Carine
Robert Cooper
Robert C. and Norma Cope Jr.
John Cunningham
Dennis and Karen Darnell
Dean and Martha Dickens
Troy Earwood
Paul and Dianne Eckels
Rose Marie Fellin
Richard and Candace Fowler
Jay, Jamie and Ginny Gallivan
Wayne Garrett
Larry Gooch
Eddie and Glada Gorden
Thelbert and Lorene Gott
Mary Belle Graham
Dr. Brian and Sandy Hahaffey
Harry Hom
Herrman Lumber
Marthann Hoover
Kelsey Irwin
Lyndon Irwin
Jackson Brothers of the South
Ken and Lisa Jeffries
Paul and Janet Kincaid
Alan P. Kloehn
Brenda Lewellen
Barbara J. Lucks
Dr. Erwin J. Mantei
Shawn Marcum
Summer and Jim Massey
Dan and Nancy McNamara
Kathy Miller
Lynne E. Miller
Peggy D. Miller
Phyllis Miller
Bill Montgomery
Steve and Jo Morton
Max and Janice Oldham
O'Reilly Auto Parts
Karen Bench-Rankin
Jeff and Sally Reed
Larry and Maribeth Robertson
Tom Rykowski
Grace Schroff
Leta D. Scroggins
Dr. Wayne Shelton
Steve and Becky Smith
Ron and Pam Smouse
Karen and David Sommerfeld
Mark and Colette St. Peter
Ken Stephens
Ken and Sherry Stewart
Chuck and Karen Stoner

Wilma Sutton
Charles and Barbara Thomison
Dana West
Jeff Williams
Ryan Wilson
The Wooten Company, LLC

Bruin Level
(\$150-\$299 annually)


Wayne Bough
LTC Frank Bridges
Don and Linda Cheever
Matthew Cope
John DeuPree
Carl and Jan Dickey
Keith and Marianne Guttin
Bruce and Susan Hageman
Scott and Gennie Harold
David and Cathy Horsey
Harold Horsey
Robin and Mary Luke
Matt McDonough
David and Janet Moyer
Gary and Nancy Radoch
Karen Thomas
Linda Tufts
Rick Wilson

Cub
(\$50-\$149 annually)

Pat Blasi
Scott Whiteley Carter
Chad Cox
Hal Funk
Kristan Gochenauer
Paul J. Goldak
Marty Greene and Jack Casper
Kevin and Julie Grogan
Steve Hutton
Megan and Andres Irizarry
Judy Jaycox
Sally and John McAlear
Steven Nurnberg
Robert Ogden
Rick, Teri, Sarah and Kate Sabo
Austin and Jade Schilling
Michael Scriven
Suzanne Shaw
P. Tonkinson Agro Corporation
Randy and Julie Wright

Contact us!

We're happy to talk with you. Just call this number to reach any member of our staff.

 417-836-4143



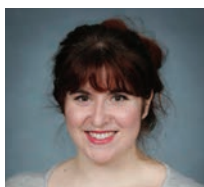
Foundation, development and alumni relations



Debbie Branson
Associate Director of Alumni Activities
DebbieBranson@MissouriState.edu



Callie Carroll
Director of Athletics Development
CallieCarroll@MissouriState.edu



Amber Carr
Assistant Director of Development for the West Plains campus
AmberCarr@MissouriState.edu



Lisa Clark
Director of Planned Giving
LClark@MissouriState.edu



Jacqui Coones
Director of Prospect Management and Research
JacquiCoones@MissouriState.edu



Kerry Dickerson
Senior Director of Athletics Development
KerryDickerson@MissouriState.edu



W. Brent Dunn
Vice President for University Advancement and Executive Director, Missouri State University Foundation
BrentDunn@MissouriState.edu



Lori Fan
Executive Director of Alumni Relations
LFan@MissouriState.edu



Wendy Ferguson
Executive Director of Development
WendyFerguson@MissouriState.edu



Alison Harper
Director of Annual Funds
AlisonHarper@MissouriState.edu



Cindy Howell
Director of Development
CindyHowell@MissouriState.edu



Patty Ingle
Director of Development
PattyIngle@MissouriState.edu



Shellie Jones
Assistant Director of Alumni Engagement
ShellieJones@MissouriState.edu



Heather Kamps
Director of Development for the West Plains campus
HeatherKamps@MissouriState.edu



Denise Kettering
Director of Advancement Services
DeniseKettering@MissouriState.edu



Stephanie Matthews
Director Corporate and Foundation Relations
StephanieMatthews@MissouriState.edu



Matt McDonough
Director of Development
MMcdonough@MissouriState.edu



Keri McKee
Director of Development
KeriMcKee@MissouriState.edu



Kelsey Menefee
Assistant Director, Donor Relations and Special Events
KelseyMenefee@MissouriState.edu



Sophie Pierpoint
Director of Development
SophiePierpoint@MissouriState.edu



Angela Pinegar
Assistant Director of Advancement Services
AngiePinegar@MissouriState.edu



Karl Schmidt
Director of Development
KarlSchmidt@MissouriState.edu

Ashley Anderson
Administrative Assistant II – Donor Relations and Special Events

Cindy Busby
Executive Assistant to the Vice President and Building Manager

Kimberly Clark
Document and Report Specialist

Mike Ferguson
Building Foreman

Debra Goodwin
Administrative Specialist I

Monica Gray
Administrative Assistant III

Jon Hanson
Foundation Accounting

Don Hendrickson
Advancement Applications and Data Analyst

Debbie Martin
Administrative Assistant II – West Plains campus

Sheila McGowne
Administrative Specialist II

Kathy Miller
Records Supervisor

Sandra Miller
Webmaster

Barbie Penn
Administrative Specialist II

Cindy Schull
Director - Grants and Foundation Accounting

Debbie Underwood
Foundation Senior Accounting Analyst

Cynthia Warnow
Administrative Assistant II – Alumni Relations

Julie Wright
Administrative Assistant II – Athletics Development



Natalie Seever
Business Process and Reporting Analyst-Advancement
NatalieSeever@MissouriState.edu



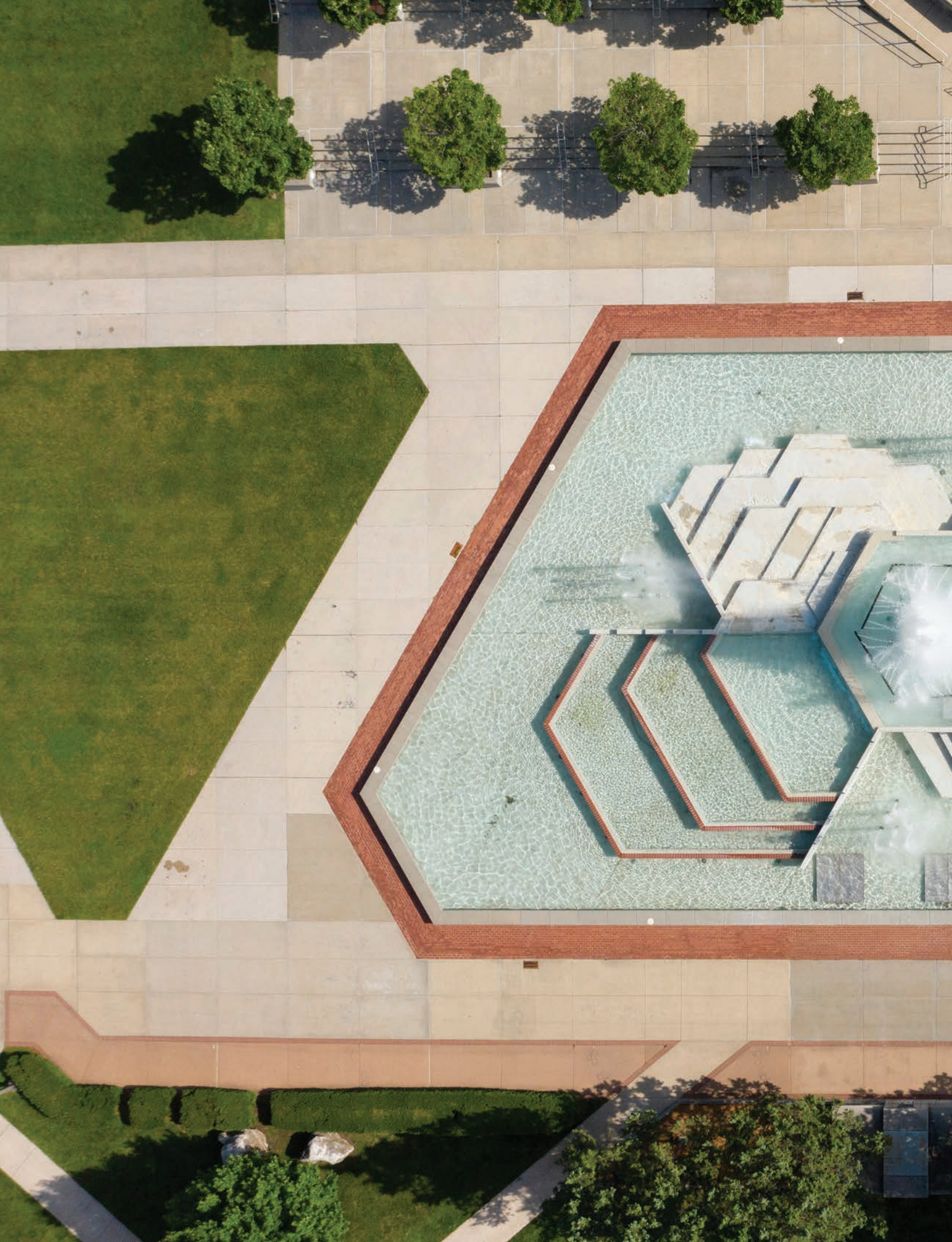
Stephanie Smith
Senior Director of Donor Relations and Special Events
StephanieSmith@MissouriState.edu

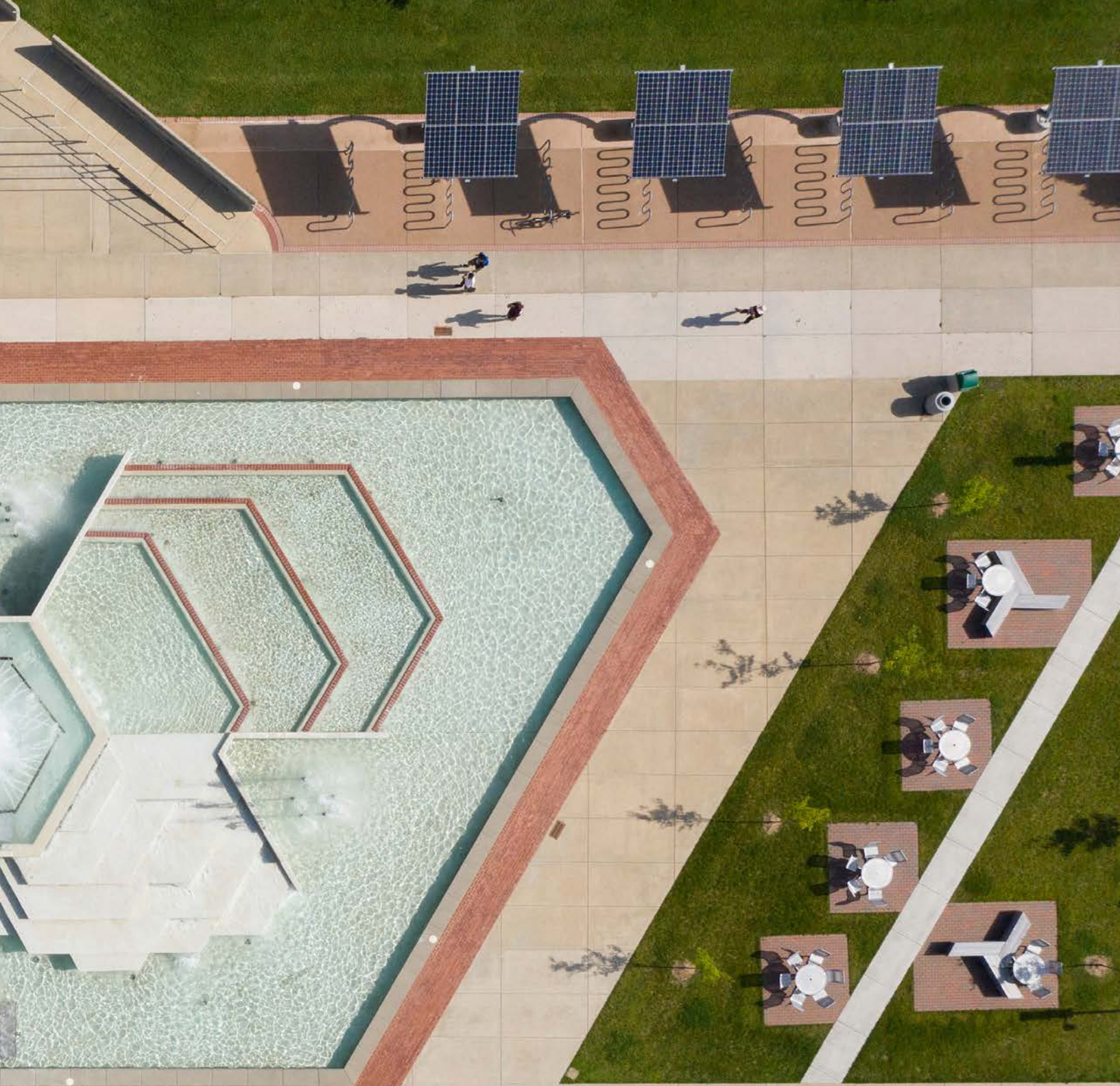


Jordan Taylor
Assistant Director of Athletics Development
JordanTaylor@MissouriState.edu

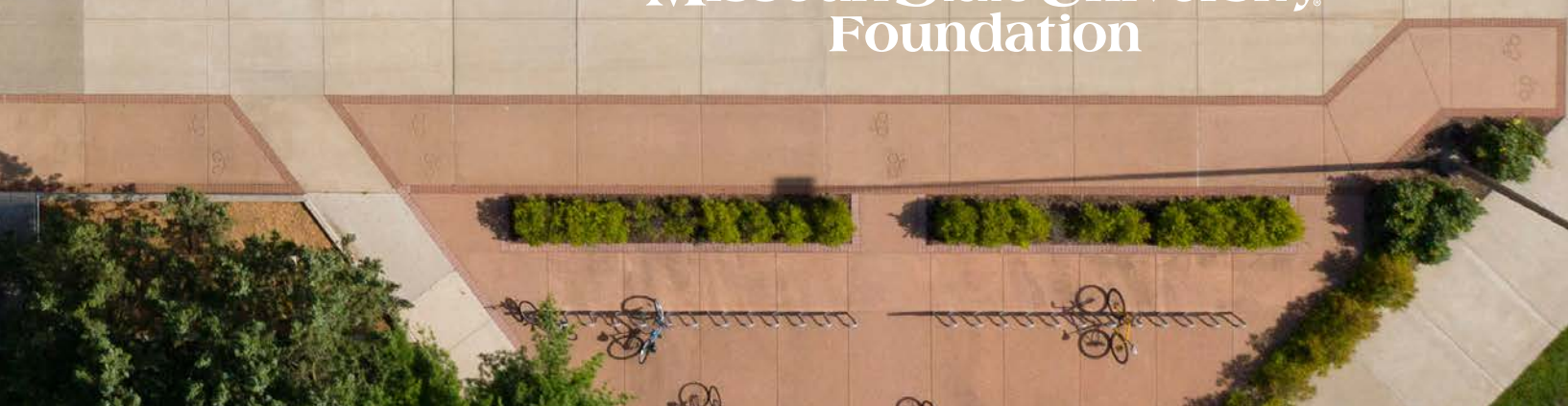


Candice Wolf
Assistant Director of Alumni Activities
CandiceWolf@MissouriState.edu





Missouri State University
Foundation





Missouri State University[®] Foundation

Missouri State University adheres to a strict nondiscrimination policy and does not discriminate on the basis of race, color, national origin (including ancestry, or any other subcategory of national origin recognized by applicable law), religion, sex (including marital status, family status, pregnancy, sexual orientation, gender identity, gender expression, or any other subcategory of sex recognized by applicable law), age, disability, veteran status, genetic information, or any other basis protected by applicable law in employment or in any program or activity offered or sponsored by the University. Sex discrimination encompasses sexual harassment, which includes sexual violence, and is strictly prohibited by Title IX of the Education Amendments of 1972. ||| DEV 05-20-2019