

SUMMER 2019:
2020 VISION



FIRST LOOK
VIGNETTES

PICNIC TIME FAMILY OF BRANDS • C1191

Whether the treats are sweet or savory, the three-tier serving ladder puts the ease in entertaining. The collapsible ladder and removable trays are crafted from food-safe acacia wood.



Products featuring this stamp are included in the **FIRST LOOK** vignettes. The displays are located in the Building A lobby; Building B, WorldView on Sixteen; Building C, 4th Floor; and Pavilions 1.

FIRST LOOK SHOWROOM TOURS

Las Vegas Market attendees can register in advance for either or both FIRST LOOK showroom tours. The Home Furnishings edition meets up with curator and editor Julie Smith Vincenti on Monday, July 29, at 1:30 p.m. The Gift & Lifestyle sequence commences Tuesday, July 30, at 10:30 a.m. Visit the [Seminars & Events](#) page at www.LasVegasMarket.com for more information.



ON THE COVER

EMILY MCDOWELL
& FRIENDS • C1024
Greeting cards and magnets featuring
artwork by Lisa Congdon.

DANCING YAK
HANDICRAFTS • P1-4040
Sheep wool felt tote with pom pom accents.

NEW PACIFIC DIRECT • A654
Yukon accent chair with Azure Floral fabric.

LOLOI RUGS • B462, B471, B480, B482
Woven yarn wall decor.

2020 VISION

Two themes repeat in the Summer 2019 edition of **FIRST LOOK**: “personal style” and “easy sophistication.” These moods appear in all **FIRST LOOK** touch points this season — product displays; a CEU seminar on Monday, July 29, at 10 a.m.; and showroom tours (see sidebar box) — and they will resonate in the decade ahead. In fact, we’re so confident in the staying power of personal expression and sophistication, we’ve titled this issue “2020 Vision.”

The Maximalist interior in the Building A lobby, for instance, nods to personal style and home curation ... it’s an urban-inspired space for an imagined city dweller. Featured product categories include artful furniture and decorative accessories, statement-making lighting and barware.

Color drenching, a technique that experiments with tint and shade, is illustrated in the Building C, 4th Floor, display. We use teal as a starting point for this sophisticated, yet youthful, approach to color and home decorating. Also in this display: stationery, holiday and wall decor.

Find a menswear-inspired vignette in the **FIRST LOOK** display at WorldView on Sixteen ... think business casual meets cool neutrals and playful novelties. Nearby, the “Fringe Elements” presentation is casual elegance at its best — here, the story is texture and tactility. An outdoor sitting area, complete with greenhouse, rounds out the display.

Lastly, **FIRST LOOK**’S future-focused color palette is the backdrop for the Pavilions 1 display. Artisan-made personal accessories, modern home accents, jewelry for her, and gifts for baby are category highlights.

Make **FIRST LOOK** your first stop for future-focused sourcing at Las Vegas Market ... welcome and enjoy!

FIRST LOOK is produced by Nine Muses Media LLC for Las Vegas Market. Las Vegas Market is owned and managed by International Market Centers, L.P., the world’s largest operator of premier showroom space for the furnishings, home decor and gift industries. No part of this publication may be reproduced in whole or part without prior permission of the copyright holder. Opinions expressed in FIRST LOOK are not necessarily those of Nine Muses Media LLC or IMC.

CASUAL REMARKS

A relaxed palette and a casual mix of textures underscore the comforts of home.



UMA HOME DECOR • C420
Iridescent Yellow and Smoked Green hues give this blown glass vase its modern appeal. It stands 15 inches high.



CLASSIC HOME • C309
Hand-embroidered detailing is showcased on two fabrics in a new jewel-tone pillow collection. Jane Amethyst showcases the technique on velvet; Giselle Spice presents a linen backdrop.



PORTER DESIGNS • C1444
Corbu cocktail table draws inspiration from 1960s-era Modernist furniture. Black metal intersects with walnut-stained acacia wood to create the unique tabletop design.

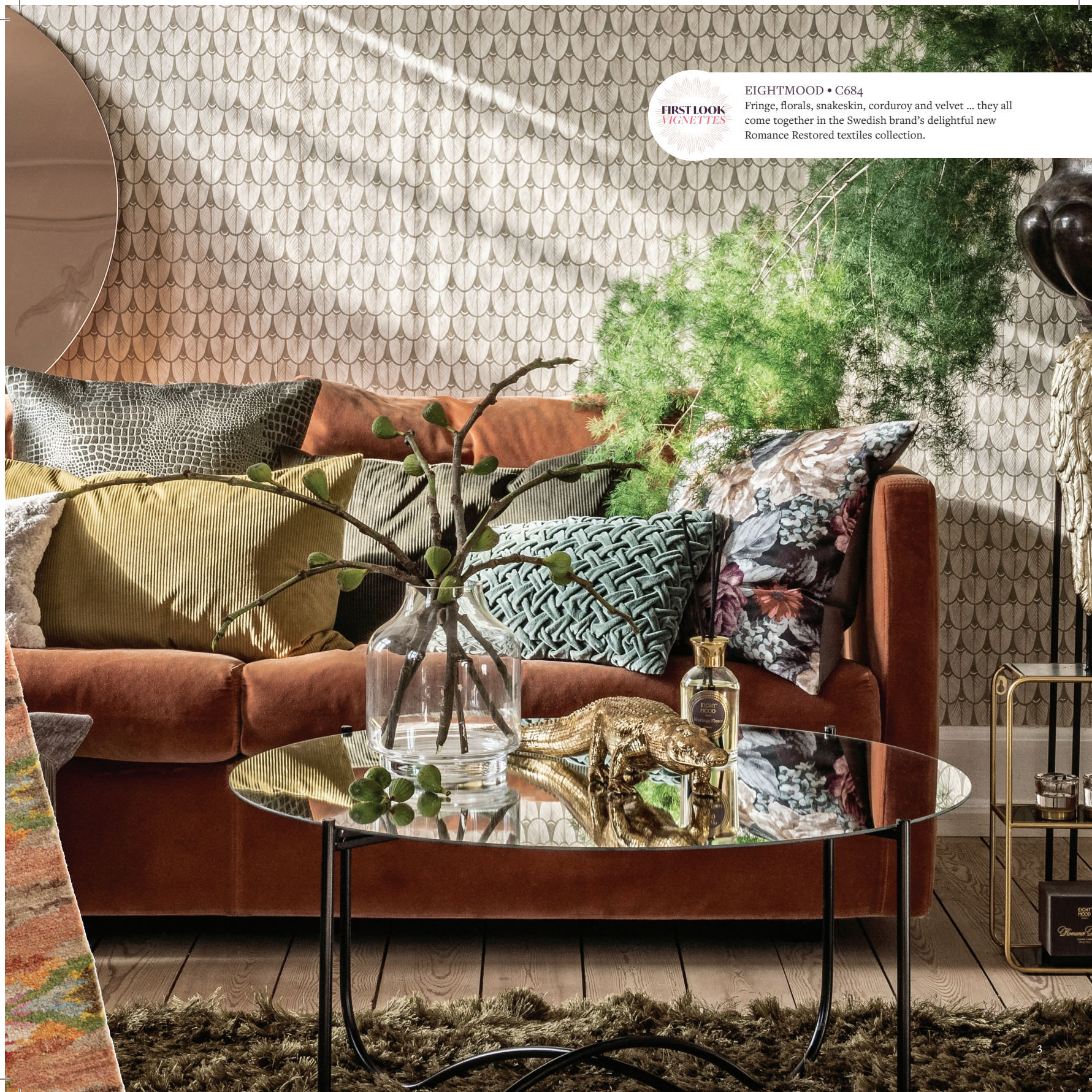
ANNIE SELKE COMPANY • C354
Shiloh hand-knotted jute area rug was inspired by the works of painter Laura Park. A mix of bright and pastel hues, plus texture-enhancing shearing effects, give the rug its distinct mottled appearance.



FIRST LOOK
VIGNETTES

EIGHTMOOD • C684

Fringe, florals, snakeskin, corduroy and velvet ... they all come together in the Swedish brand's delightful new Romance Restored textiles collection.



FRINGE ELEMENTS

Today's favorite passementerie, tassels, are mainstream at Las Vegas Market.



CLASSIC HOME • C309

Braided tassels and shag stripes are special effects on Montclair kilim area rug. This wool-and-cotton design is recommended for medium-trafficked areas.



FIRST LOOK VIGNETTES

GANZ-MIDWEST CBK • C999

Fringed and freeform ... Boho Chindi pillow and basket are woven from recycled cotton, so each is a one of a kind.





FIRST LOOK
VIGNETTES

LOLOI RUGS • B462, B471, B480, B482
Stitched fabrics, embroidery, pinned fabrics, woven yarns, felted wool, woven mud cloths and more are showcased in a new collection of wall decor. Here, a one-of-a-kind collage.



FIRST LOOK
VIGNETTES

LUMILY • P1-4007
Frida keychains with floral garland, pom pom and tassel are a playful likeness of their muse. Crafted in Mexico.



FIRST LOOK
VIGNETTES

PORTER DESIGNS • C1444
Tapestry mango wood sideboard begs to be touched: The door fronts are covered in an abstract patchwork of embroidery, tassels and stitching.



FIRST LOOK
VIGNETTES

SHUPACA • C1093
Heirloom vintage stocking features upcycled one-of-a-kind textiles woven by families in the Peruvian Highlands.

STRESS LESS

Streamlined styling and smart features make outdoor living a breeze.



FOUR HANDS • A140

Tilly armless outdoor sofa is defined by its simple styling and streamlined finishing. A loveseat, a lounge chair and additional fabrics — Light Navy is shown — are available.



SKYLINE DESIGN • C1284

Ruby daybed makes a grand statement in both hospitality and residential settings. Seat and back cushions are offered in multiple fabrics; the Viro material is offered in a finish called Kubu Mushroom.



PLANK & HIDE • C1395

Quad coffee table's built-in cooler makes easy work of hosting. When the party's over, return the wood-grained aluminum panel for a nearly seamless tabletop.





O.W. LEE CO. • C1301
Easy elegance sums up the new Marin dining, deep seating and lounge collection. The frame is available in 13 finishes. Choose Flex Comfort or cushions; the latter is offered in more than 150 fabrics.



RATANA • C1235
An urban design aesthetic shaped the look of the laid-back Park West modular sectional. The frame wears the new hand-brushed Pearl option. Note the rope detail on the seat backs.

BE SEATED

Classy accent chairs are a common denominator in Maximalist-styled interiors.

FIRST LOOK
VIGNETTES

PHILLIPS COLLECTION • A202
Frozen arm chair exudes elegance in a warm combination of beige and brass.



FIRST LOOK
VIGNETTES

BOLSTER INTERIORS • P1-1009
Vigor chair boasts sustainability credentials: the frame is reclaimed metal tubing; the foam core is 100 percent natural latex; and the fabric is a Green Guard-certified blend of natural cotton and recycled polyester.



MEVA • B162
Applecross chair's linen fabric has striations and sheen that transform a wingback silhouette. Choose from three colors; each has the solid wood leg shown.



FIRST LOOK
VIGNETTES

FOUR HANDS • A140
Relaxed modernism ... such is the tale of Taryn chair. Note the low-slung styling and the buckle details.

TABLE DISCUSSION

Today's topics: live-edge treatments, thin legs and sculptural bases.



MODUS FURNITURE INTERNATIONAL • B570
Because of the live-edge on Kali mahogany dining table and bench, no two are alike.



MANGO FURNITURE • B135
Craft and artistry are one on Kosa dining table; the wood slab has a distinct metal inlay and warm two-tone finish. The base is iron.



ESSENTIALS FOR LIVING • B600
A materials mix of brass and concrete gives Industry dining table its modern edge. It's available as a round version, too.

GOOD LIBATIONS

Now serving: Barware for all occasions.

VITAL INDUSTRIES • C1112QQ
Mixology glassware is made and screened in the United States. Available spirits: Whiskey, Scotch, Bourbon, Rye, Tequila, Vodka and Mezcal.



SHELL CREEK SELLERS • C824
Reusable stainless steel straw sets include a wide design for smoothies or milkshakes, two bent straws for beverages, and a cleaning brush.



PICNIC TIME FAMILY OF BRANDS • C1191
Four cocktail sticks, a double-sided jigger, a brushed muddler with plastic head, a Hawthorne strainer, a waiter-style corkscrew, and a cocktail spoon with hammer tuck into and roll up in a portable waxed-canvas case.



ROLF GLASS • C109
Vienna glassware is an instant heirloom. The colored lead-free crystal is manufactured in Poland, and glasses are diamond-wheel engraved and polished in the United States.



MEVA • B162
Dressed-up door fronts on Kronoberg wine cabinet are made from reclaimed pine wood. A metal base supports the well-crafted case.



TIP THE SCALES

Snake motifs slither in for the 2019/20 season.



FIRSTLOOK
VIGNETTES



CELADON ART • C572

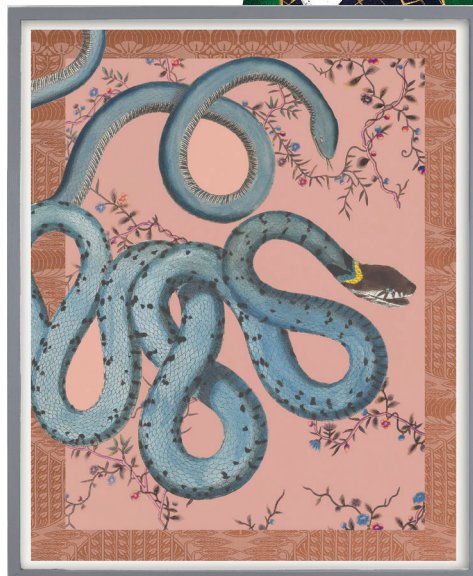
"Serpent Motif I" and "Serpent Motif II" are modeled after snakes found on a French fabric dating back to the 1880s. The print features hints of gold and silver gilding.



FIRSTLOOK
VIGNETTES

EMILY McDOWELL
& FRIENDS • C1024

Underestimate Us tote is printed in Los Angeles on heavyweight canvas. It measures 20 inches wide by 15 inches high.



DAYLIGHT DREAMS EDITION • P1-1030

"Les Serpents" (left) is part of a series of collages that combine antique sources including birds, animals and textiles. It's printed on 100 percent cotton paper.

FIRSTLOOK
VIGNETTES

LEFTBANK ART • A229, A254

Exotic black-and-white snakes wriggle against an emerald backdrop on "Temptation" by Beverly Fuller.



SANGUINE DISPOSITION

Tactile materials take on rich reds with stunning effect.

ZODAX • C1024

Holiday centerpiece: This elegant red flocked stag head stands 15.5 inches high.



SUNPAN • B700

The generously proportioned Endall tufted ottoman is stocked in a Merlot fabric and Antique Brass-finished frame. The diameter is about 44 inches.



JEANNE SIMMONS

ACCESSORIES • P1-3100

A cheetah print band encircles this Ruby Red wool fedora. An elastic tie in the crown offers size adjustability.



ABBYSON • B170

Celine's Merlot velvet and gold finish make a step-up style statement, solo or shown in pairs.



EFFICIENCY EXPERTS

Retro fixtures, modern-day performance:
Mid-Century Modern LEDs light the future.



VERTUU DESIGN • B365
Alo in Warm Gold presents two LED bulbs surrounded by clear glass globes. The floor lamp (shown) stands 51 inches high; a table lamp is available, too.

STYLECRAFT HOME COLLECTION • A352

The 21-inch-high Modern Gold LED table lamp is topped with a gold metal shade.



TAILOR MADE

FIRST LOOK references menswear to create a well-dressed interior.

NEW PACIFIC DIRECT • A654

Eugene in a fabric called Century Gray is as comfortable as it is versatile — this open-back accent chair suits a range of interior styles.



**MOBITAL
DESIGN GROUP • B775**

Rizzo end tables' powder-coated iron bases are topped with white terrazzo marble.



CAPEL RUGS • A133

Barrister hand-knotted wool area rug alternates between check, herringbone and tweed patterns.



**TEMPAPER • C584**

Obedient Dalmatian dot a textured gray linen background on Major, new to the Novogratz Collection of self-adhesive, repositionable wall coverings.

AZURE JEWELRY • P1-4040

Pollock sterling silver cuff bracelet is a tribute to painter Jackson Pollock ... a nod to “chaotic perception in a tangled world.”

**AUSKIN USA • C524C**

This distressed leather pillow recalls vintage bomber jackets from the 1940s and 1950s.

**FOUR HANDS • A140**

The intricately carved Raffael bar cabinet stows bottles, stemware and more. It stands on iron legs.



TAILOR MADE *continued*

DIAMOND SOFA • B746

Velvet, tufted cushions and oversize bolster pillows are Mid-Century Modern references on Juniper sofa. A matching chair and additional fabric options are available.

FIRST LOOK
VIGNETTES



CLASSIC HOME • C309

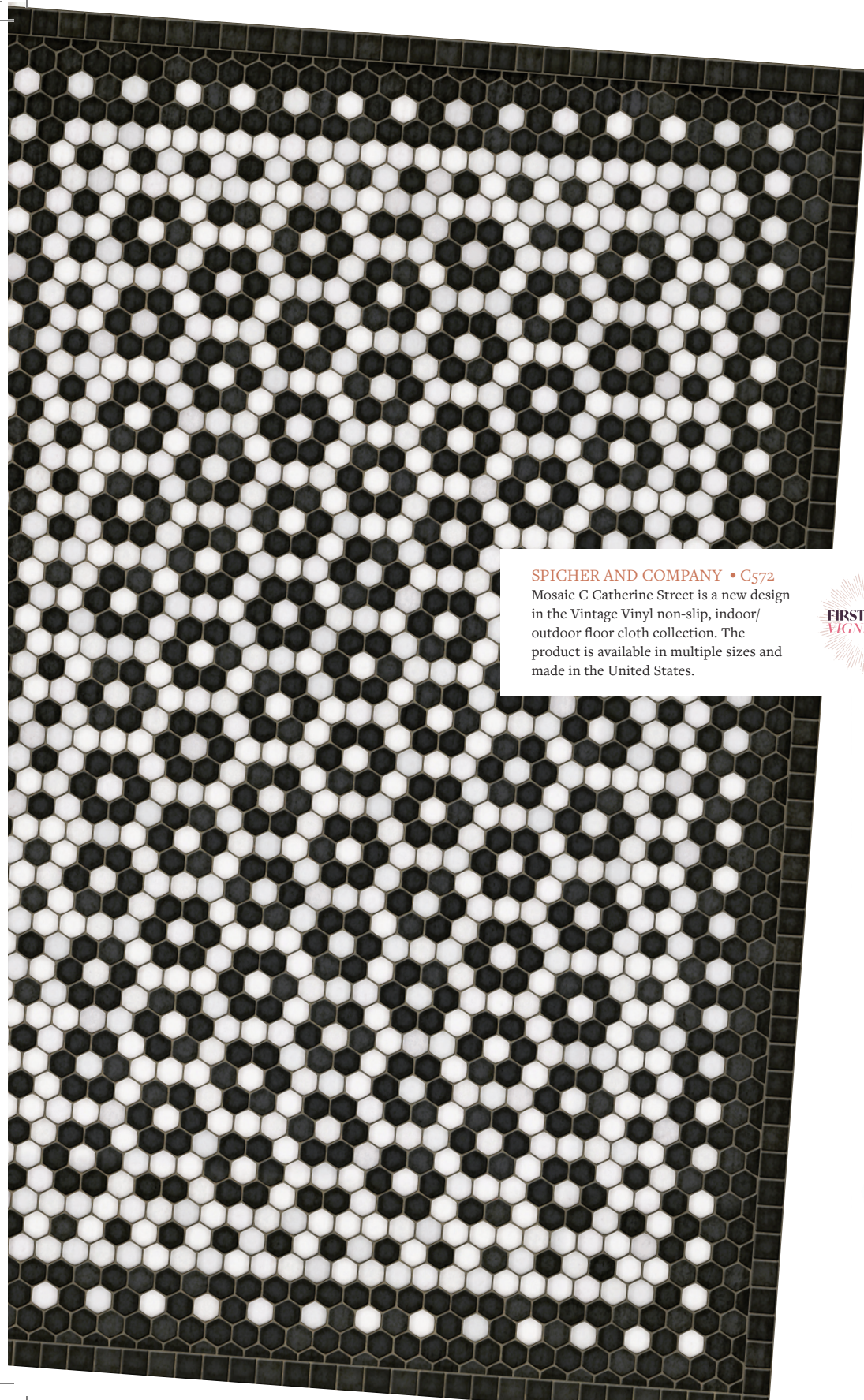
Classic, yet casual, Winslow houndstooth club chair rests on rubber wood legs and casters.

SONOMA

LAVENDER • P1-3088

The highly giftable Angora blanket can be used as a wrap; the coordinating bolster pillow provides comfort under the neck, knees or lumbar region.

FIRST LOOK
VIGNETTES



SPICHER AND COMPANY • C572
Mosaic C Catherine Street is a new design in the Vintage Vinyl non-slip, indoor/outdoor floor cloth collection. The product is available in multiple sizes and made in the United States.



**CRESTVIEW
COLLECTION • A353**
Swirled gray glass and concrete form the base of this new table lamp.



CRESTVIEW COLLECTION • A353
The earthenware vase trio presents subtle textures and cool grays. Heights are: 14.5 inches, 16.5 inches and 18.5 inches.

FOR SHORE

Beach-inspired accessories make waves at Las Vegas Market.

MERRITT INTERNATIONAL • C691
The artistry of Kate Nelligan is featured on a new series of melamine dinnerware. Her Bouy design (shown) is filled with brilliant color and repeating pattern.



BETH JEWELRY • P1-3026
The tropical monstera plant is transformed in a hand-formed sliding necklace. Wear it close to the neck with a long vertical drop, or loose around the neck in a Y shape.



FIRST LOOK
VIGNETTES

LITTLE MOON ESSENTIALS • P1-3133
Beach All You Want™ sugar scrub exfoliates and moisturizes the skin, and is recommended for use after shaving.



FIRST LOOK
VIGNETTES



FIRST LOOK
VIGNETTES

RAIN JEWELRY COLLECTION • P1-3114
The Aqua Gem Starfish hook bracelet delights in faux sea glass and silver charms.

ABBIAMO TUTTO • C109
The Seahorse Collection — which includes a square serving plate, teardrop-shaped bowls, rectangular dishes, dipping bowls and more — is hand-painted and decorated in Italy.

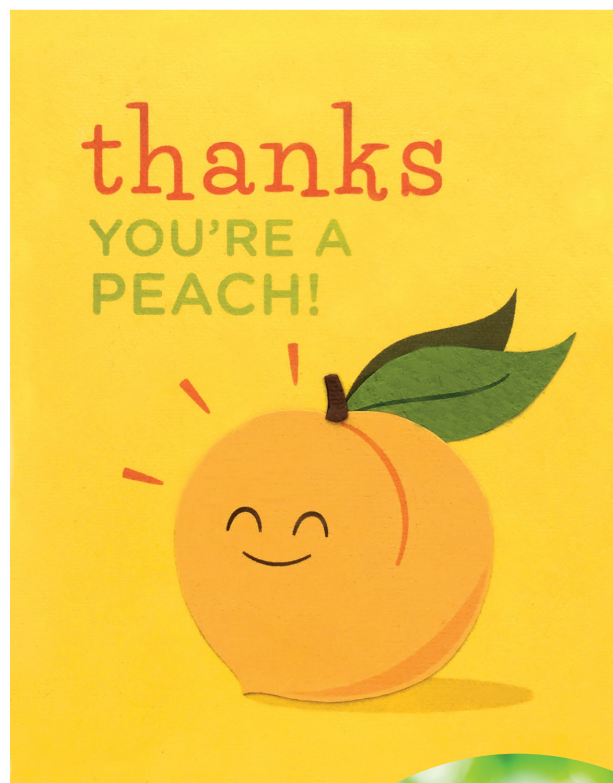


MITCHELL BLACK • C482, C596A
The Gray Malin wallpaper collection expands this summer to include two new timely patterns: Beach Umbrellas and Ocean Swimmers (shown).

FIRST LOOK
VIGNETTES

SUNNY SIDE

Gifts for gardeners favor house plants, fruity ingredients and sunny colorways.



GOOD PAPER • P1-4001
“Thanks, You’re A Peach” is signed by the card’s maker, an artisan benefiting from the company’s mission to provide fair wages and dignity to victims of abuse.



EUROPEAN SOAPS • C1024
Bella pure vegetable glycerin soap is offered in six fragrances, including Loquat, Peach and Mandarin; Pink Grapefruit, Vervain and Cassis; and Sour Cherries and Pomegranate.



MELROSE INTERNATIONAL • C932
Greenhouse shelving unit elevates florals, house plants and other accoutrements to cherished accents.

KARMA • C1024
Machine-washable Mustard Floral pillows won’t fade or bleed due to the sublimation-printed pattern.



HUES NEWS

FIRST LOOK taps teal for a primer on color drenching, a decorating technique that experiments with tint and shade.



LEFTBANK ART • A229, A254
“Moderne” is a 40-inch-by-40-inch gicleé by artist Michael Berman.



MODWAY FURNITURE • B722

A contemporary twist on a classic silhouette ... meet Viola, a tufted settee offered in a choice of four stain-resistant velvet covers.



MANHATTAN COMFORT • B755

Storage abounds in Tribeca, a 44-inch-high case that can be put to service in the entryway, family room, dining room or bedroom. The finish is Mint Green.



CARDTHARTIC • P1-4066

The Pretty Words Collection features hand-lettered inspirational statements. The greeting cards are made in the United States using soy ink and textured recycled paper.

CUT IT OUT

Modern lighting is an open-and-closed case.

KALCO LIGHTING • A208

Delicate glass spheres are suspended in the laser-cut openings of this new metal pendant. Its diameter is 32 inches.



PACIFIC COAST LIGHTING • A301

Angular cutouts on Rubin's ceramic body are duplicated on the laser-cut drum shade. The matte black finish option is shown here.



ARTECNICA • P1-2008
Shayk 2X pendant, made from a synthetic paper and PET material, forms an elliptical shape that looks as good as the shadows it casts.



FITTING IN

Bold colors enhance modestly sized living spaces.



MANHATTAN COMFORT • B755

Marine end table multitasks as an end table, work surface and magazine stand. Flip it on its side, and it's a coffee table.



ZUO • A442

Bree counter-height stools are a glamorous addition to kitchens of all sizes. The Lux Gold stainless steel base is topped with a Red Burgundy leatherette upholstered seat.

FULL SPECTRUM

Iridescent, pearlescent ... transcendent.



SEMLPLI • P1-2008

A limited-edition Monti-Taste glassware collection features an iridescent finish. Shown: Monti-Pint; Monti-Pils; and Monti-IPA glasses.



SULLIVANS • C752

Anodized aluminum pots, vases and trays are new for Summer 2019.



KALA STYLE • C1024

The namesake ingredient in Hallo Sapa Icelandic Angelica Herb soap is a skin detoxifier; meanwhile, Icelandic Volcanic Ash soap is said to slow down the skin's aging process.



SWIGSTICK • P1-4118

Reusable straws are food-safe stainless steel that's dishwasher friendly. The straws are packaged in eco-friendly kraft paper.



FOREVER IN BLUE JEAN

From cotton to ceramic,
denim blues cover all.

FIRST LOOK VIGNETTES

URBIA • C454

The low-profile Sepli chair offers an oversize seat and generously padded arms.

AVASA HOME • C524B

The luxurious Grace sheets are 400-thread-count white sateen; Habutai silk pom pom details are a winsome touch.



ART FLORAL TRADING • P1-2049

Each of these handmade, texture-rich ceramic sculptures wears a matte finish.

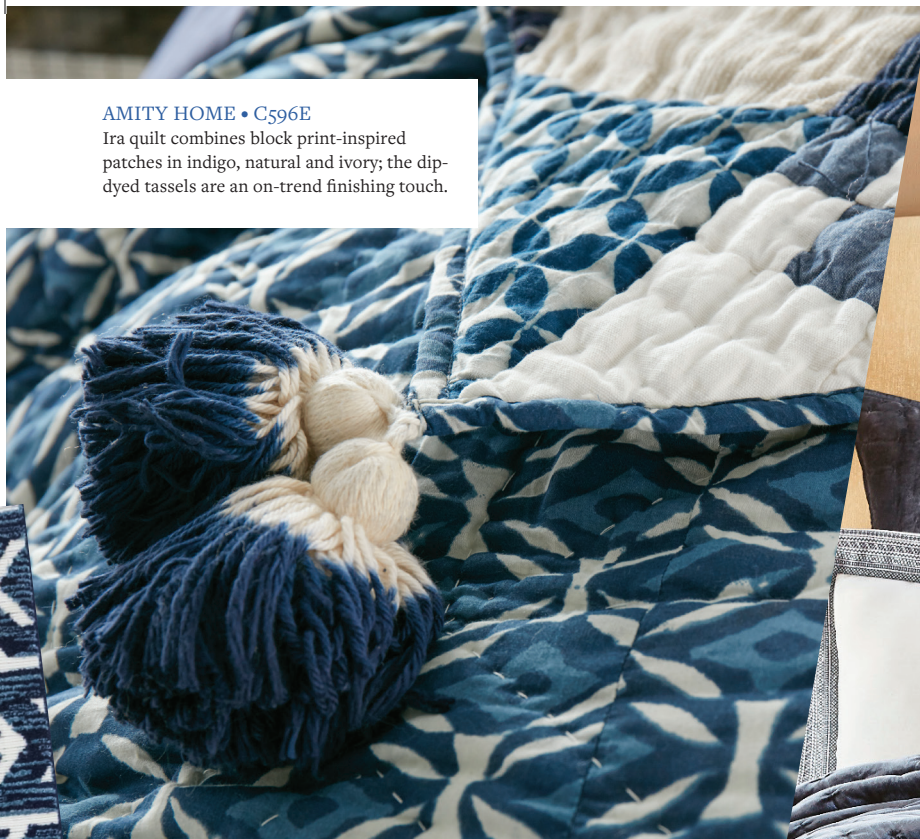
UNIQUE LOOM • B424

This area rug by Trading Spaces' Sabrina Soto offers indoor/outdoor construction and a high-low pile.



AMITY HOME • C596E

Ira quilt combines block print-inspired patches in indigo, natural and ivory; the dip-dyed tassels are an on-trend finishing touch.



ORCHIDS LUX HOME • C572

Both elegant and comfortable, the machine-washable Luna quilt and sham are made of plush velvet. Queen and king sizes are available.

UBI-IND • P1-3012

Mi Cocina 3/4 apron is handcrafted in the United States from Cone White Oak denim. It adjusts from Women's XS to Men's XXL.



#ILOVEIT

For bridesmaids or BFFs, the kids' coaches or co-workers, mom or mother-in-law ... source products at Las Vegas Market that suit all the ladies on the gift list.

PIECES OF ME • C1039

Symbols suggesting "Ambitious" and "Determined" are stamped into the 14-karat-gold-plated Personality cuffs. Crafted in the United States.



SEVYA HANDMADE • P1-4128

Women in Western India create the hand-dyed shibori pattern on this new lightweight wool shawl.



COMPENDIUM • C1024

"You're Incredible" greeting card, part of the Love Muchly line, presents a hand-drawn illustration alongside a sincere sentiment.



LOTUS JEWELRY STUDIO • C1024

The handmade Bygone earrings feature mystic jasper stones in a choice of sterling silver or gold.





Wit! • C1024
This cotton canvas makeup bag has an easy-to-clean polyester lining. The hand-finished Iridescent mug, meanwhile, is packaged in a gift-ready box.

TESSORO • P1-3039
Calder drop earring is crafted from natural birchbark and sterling silver.



MY SAINT MY HERO • P1-3094
Swarovski gems or beads that match birthstone colors encircle the new Birthday Blessing bracelets. Each features a Benedictine medallion.



DUTCH HOUSE CONFECTIONS • C1112RR
Choose from 10 flavors and two quantities (40 or 63 caramels) for this gift-ready wood box of confections. Private labeling is available.

MADE MARKET • P1-2028
Healing Crystals 5-pack comes with Rose Quartz for love and harmony; Amethyst for inner strength and peace; Amazonite for calm thoughts and change; Citrine for pure happiness and energy; and Sodalite for self-esteem and clarity. Packaging includes an explanatory diagram.

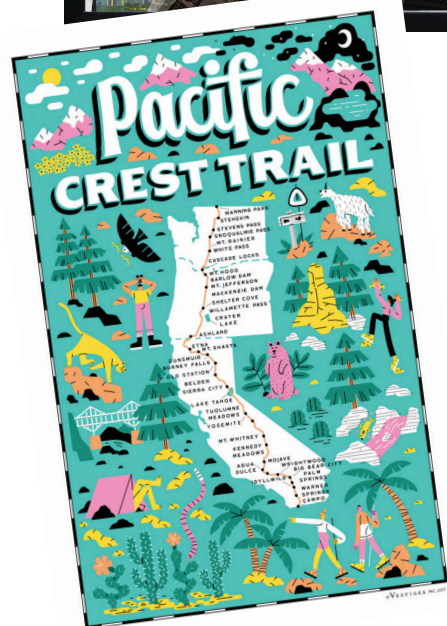


JUST COASTING

Gift debuts celebrate flora and fauna along the Pacific Coast's famous trails and highways.



CANTERBURY LANE • P1-1089
A cut above: The company's Collage Collection comprises three-dimensional wall decor assembled from various printed materials.



VESTIGES INC. • P1-2055
Artist Bill Rebholz illustrates the Pacific Crest Trail experience on this cotton pique tea towel.



STICKERS NORTHWEST • C10-105
Affix these weather-proof stickers to a water bottle, laptop or car. The company's 12-pocket stadium display unit is shown.



KARMA • C1024
Whether you're on the go, or holding down the homestead, keep hydrated with Stardust mug, tumblers and water bottles.

DEKORASYON GIFTS & DECOR • C982
This new fall presentation presents white pumpkins and acorns made of capiz shells.

FIRST LOOK
VIGNETTES

FALL TREATS

Las Vegas Market offers a bountiful harvest of fall decor and gifts.

SHIRALEH • C1024
The shapely Hello Pumpkin doormat is coir-and-vinyl construction.



LYNN MITCHELL
GROUP • C1040
This new letterpress greeting card is from the brand's Halloween collection, which is designed and printed in the United States.



DYNASTY
GALLERY • C538L
The 6-inch-wide handcrafted glass pumpkin bowl finds a place at the table during Halloween and Thanksgiving gatherings. A matching vase is available.



TIDINGS OF JOY

It's yuletide all the time in dozens of Las Vegas Market showrooms!

COMPENDIUM • C1024

This new 7-inch-wide holiday sign is new to the company's Here & There inspirational art series. The graphic is printed on 100 percent FSC®-certified wood; pieces are pre-drilled for hanging.



ARCADIA HOME • C10-106

Smile-inducing pom poms on these hand-felted wool pillow covers put the “merry” in Christmas decor.



CHUKAR CHERRIES • C112GG

Merry Quartet gift-ready sampler is comprised of chocolate cherry and chocolate nut confections.



LUCKY FEATHER • C1024

Package topper: Joy ornament is glitter-embedded acrylic.



CATSTUDIO • C505

Journey to North Pole City, the newest destination in the company's Holiday pillows collection. It's embroidered by hand on 100 percent organic cotton; red velvet piping is a finishing touch.

SOCK IT TO ME • G1039

Gettin' Jiggly With It crew socks offer a tongue-in-cheek sampling of holiday sweets.



ALESSI • C189

Bark Tree stands about 18 inches high. The design is steel with an epoxy resin topcoat called Green Christmas; the ornament magnets are porcelain.

CARRY ON

Specialized totes are in the bag.



CAPABUNGA • C1144A

A vegan leather base and numerous compartments give Market tote — available in four colors — its sturdiness and versatility.



CORKCICLE • C1024

Baldwin Boxer lunchbox fuses food-safe insulation with the looks of an on-trend handbag. It's available in vegan leather and Cordura® fabric.



ATENTI • P1-3044

Flamingo tall caddy has a spacious, fully lined center well, four inside pockets, four outside pockets and an Ultrasuede™ handle. It's made in the United States.



LIGHT BRIGHT

Simple vessels, satisfying scents.

PADDYWAX • C1024

Tins and white glass vessels call out key fragrance notes in the Farmhouse Collection.



BOMB COSMETICS • P1-3089

Rhubarb & Rose, a soy-and-wax-blend candle, suggests a soft, delicate fusion of scents. The burn time is 30-35 hours.

FIRST LOOK
VIGNETTES



FIRST LOOK
VIGNETTES

CALI COSMETICS • P1-3089

Linea Lusso luxury soy candles present classic fragrances in a modern, lidded vessel. Each 9-ounce candle has a 55- to 60-hour burn time.

OH, BABY!

Cuddle up to adorable gifts for the irresistibly cute.



DOODLE PANTS

• P1-4092

In addition to a cotton bodysuit, the new Llama pattern is available on leggings and a hoodie.



ERBAVIVA • C1039

The SPF 30 Baby Sun Stick — made of aloe, sunflower and jojoba oils, and infused with organic chamomile and lavender essential oils — offers a high level of protection, is non-nano and won't harm coral reef.



ANGEL DEAR • P1-4099

The Big Blue muslin collection includes a romper, wrap coverall, sun hat, swaddle and retro sunsuit (shown).



ZESTT ORGANICS • C1024

New plush animals and stocking stuffers include a unicorn, an elephant rattle and a bear cuddle toy (shown).





STEPHEN JOSEPH • C1024
New handmade pillows feature embroidered and crochet details.



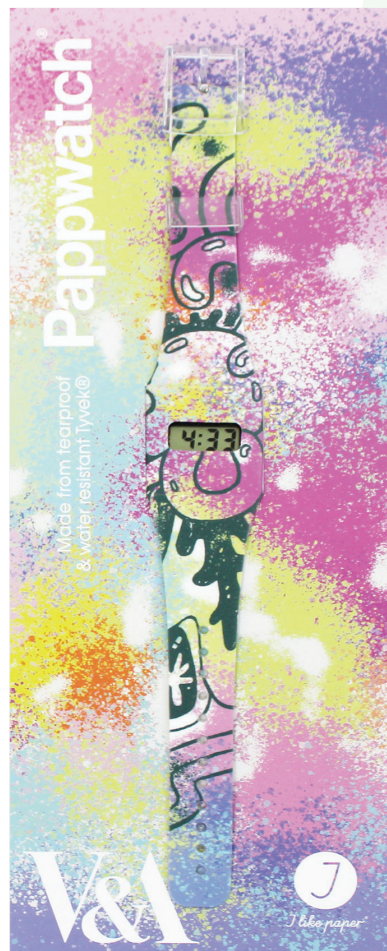
PERULAND ALL NATURAL • P1-4040
Kitten rattles are crocheted using vegetable-dyed Peruvian cotton. Like all the company's products, the rattles are Fair Trade Certified™.



GIFTS OF NATURE • C806
All creatures deserve kindness, a message displayed on this organic cotton three-snap bodysuit. It's made in the United States.

TO: TWEEEN

Gifts that fuse high-tech and low-tech tempt the young and young at heart.



I LIKE PAPER BY STISSLE • P1-2014

The ultra-thin, handmade Pappwatch is made from paper similar to Tyvek™. The timepiece has a digital time-and-date display that's powered by a replaceable lithium battery.



ILLUMINATED APPAREL • P1-4059

Imagery drawn using a specific light source will last for five minutes on Glow In the Dark machine-washable cotton t-shirt. Once it fades, create new artwork.



MUZEN AUDIO • P1-2012

On the Road bluetooth speaker is available with an alloy metal or hand-carved wood exterior. The portable unit's rechargeable battery delivers up to eight hours of play time.



WALL OF FAME

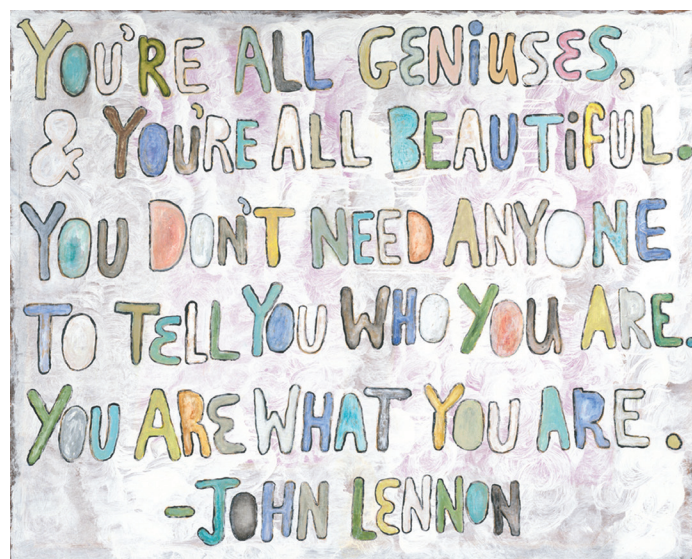
Rock on with tribute wall decor.

LEFTBANK ART • A229, A254
“Rock n Roll IV” giclée by Charlotte Perkins
measures 40 inches wide by 50 inches high.



ARTNWORDZ • P1-2025
The Pop Art Collection features iconic and memorable imagery printed on authentic vintage dictionary pages. The print measures 8.5 inches wide by 11 inches high.

SUGARBOO & CO. • C596J
Part of the Geniuses Collection,
“Lennon” gallery-wrap wall decor
encourages individualism. It measures
46 inches wide by 35 inches high.



CEU EVENTS

The following seminars have been approved by the Interior Design Continuing Education Council (IDCEC) and are recognized by the American Society of Interior Designers (ASID), Interior Designers of Canada (IDC), and the International Interior Design Association (IIDA). Times and locations are subject to change; check show directories for complete descriptions.

SUNDAY, JULY 28

11 a.m. - Noon

Stargazing: Retail's Best & Brightest

Building C, C174

Retail success stories from panelists Bradley Priest and Jonathan Tuff, Garber's Interior Design; Jamie Bernal, Jonathons Coastal Living; and Shay Geyer, IBB Fine Furnishings. Home Accents Today's Thomas Lester moderates. **0.1 CEU**

1 p.m. - 2 p.m.

Designing Spaces for Healthy Families

Building C, C132

Join interior designers Kate Lester, Kate Lester Interiors; Jeremy Bauer and Jason Clifton, Bauer Clifton Interiors; and Jannicke Ramso, Jannicke Ramso Interiors, to learn how to create healthy rooms, both indoors and outdoors. Jennifer Bringle, Casual Living, moderates. **0.1 CEU**

3 p.m. - 4 p.m.

Best of the West

Building B, WorldView on Sixteen

Join REStyleSOURCE and Nathan Turner, Nathan Turner Inc., as they discuss West Coast "life and style" with Nicole Salceda, Eye For Pretty; Stephanie Holdaway, Gatehouse No.1 Furniture & Design; Erica Bryen, Erica Bryen Design; Shay Geyer, IBB Design Fine Furnishings; and Hilde Leiaghat, Pom Pom at Home. **0.1 CEU**

MONDAY, JULY 29

10 a.m. - 11 a.m.

FIRST LOOK: Summer 2019

Building B, WorldView on Sixteen

Las Vegas Market product debuts are highlighted in this fast-paced program, a complement to the new **FIRST LOOK** displays (located throughout the Las Vegas Market campus). Plus, curator and editor Julie Smith Vincenti shares insights about the colors selected for this season's product showcase. **0.1 CEU**

11 a.m. - Noon

Entertaining in Style with Nathan Turner

Building C, C1144

Domino's Jessica Romm Perez and Nathan Turner, Nathan Turner Inc., discuss elevating spaces through

thoughtful design, as well as tabletop, food and lifestyle trends. **0.1 CEU**

Noon - 1 p.m.

Sherwin-Williams Colormix® Forecast 2020

Building B, WorldView on Sixteen

Sherwin-Williams' Laurie Clark unveils the brand's Colormix® Forecast 2020. **0.1 CEU**

1 p.m. - 2 p.m.

Retail Titans & Innovators

Building C, C174

Glean business tips from retailers including Ron Robinson, Ron Robinson Inc.; Chris Cooley, Michael Alan Furniture & Design; and Tara Riceberg, Tweak and Tesoro. Furniture's Today's Bill McLoughlin moderates. **0.1 CEU**

2 p.m. - 3 p.m.

Fair Trade — Setting a Legitimate Ethical Standard for Business

Pavilion One, Seminar Room

Chris Solt, Fair Trade Federation, shares an overview of fair trade principles and the future direction of this business practice. **0.1 CEU**

2:30 p.m. - 4 p.m.

Ahead of the Curve

Building B, WorldView on Sixteen

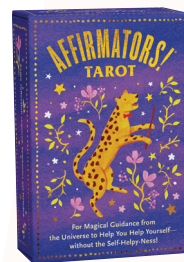
Experience an exclusive preview of new trends as determined by Marie Flanigan, Marie Flanigan Interiors; Britany Simon, BSDH; Aimee Wertepny, PROJECT.; and Denise Morrison, Denise Morrison Interiors. Kathryn Given, Luxe Interiors + Design, moderates. Follow the panelists at #ViewOnVegas @LasVegasMarket. **0.15 CEU**

3:30 p.m. - 5 p.m.

IAHSP: Home Staging - How to Successfully and Strategically Add to Your Business

Building C, C174

Home staging powerhouse Jennie Norris provides an overview of home staging and discusses the earning potential of this discipline. **0.15 CEU**



KNOCK

KNOCK • C1024

Affirmators! Tarot offers a mix of divine ancient wisdom and Affirmators!® magic!

TUESDAY, JULY 30, 2019

11 a.m. - 12:30 p.m.

The Nuts and Bolts of Editorial Photography – West Coast Edition

Building C, C174

Join Kathy Wall, The Media Matters Inc., and panelists Michael Waters, Michael Walters Style; photographer Karyn Millet; and Lindsey Shook, California Home + Design, for editorial photography tips. **0.15 CEU**

1 p.m. - 2 p.m.

Selling Luxury

Building A, A110

Attendees learn what makes a luxury brand and why select consumers buy from these brands. Lunch included. **0.1 CEU**

1 p.m. - 2 p.m.

Cosagach: The Next Fresh Concept in Design

Building C, C174

Lisa Kahn, Lisa Kahn Designs, explains Cosagach, the traditional Gaelic/Scottish term for cozy, warm and well, and how to create a sanctuary using this principle. **0.1 CEU**

3 p.m. - 4:30 p.m.

Home Staging Association Panel Discussion

Building C, C174

Learn how to incorporate staging into your design and retail business from Jennie Norris, StagedHomes.com and Sensational Home Staging, and Jana Uselton, Model My Home®. **0.15 CEU**

WEDNESDAY, JULY 31

10:30 a.m. - 11:30 a.m.

How to Bring HGTV-Style 3D Visuals to Every Project

Building C, C174

How can 3D design benefit your firm? Rebecca Zajac, Design By Numbers, explains. **0.1 CEU**

12:30 p.m. - 1:30 p.m.

Top 10 Musts for Top Home Staging & ReDesign Businesses

Building C, C174

Jana Uselton, Home Staging & Redesign Assn., shares a Top 10 list of must-do's. **0.1 CEU**