

WHO'S WHO

2018

*Women in
Professional Services*

Long Island
BusinessNEWS

**A LONG ISLAND BUSINESS NEWS
SPECIAL ADVERTISING SUPPLEMENT**



BERDON ACCOUNTANTS AND ADVISORS™

EISNERAMPER




CITRINCOOPERMAN
Accountants and Advisors

 **GRASSI & CO.**
ACCOUNTANTS & SUCCESS CONSULTANTS™

FLUSHING
Commercial • Business • Consumer Bank

 **HARRIS BEACH** PLLC
ATTORNEYS AT LAW
Discover True Engagement™

FDT
FIRM ADVANTAGE
**FORCHELLI
DEEGAN
TERRANA**

COMMUNITY BANKING

From Montauk to Manhattan



*Many Success Stories.
One Bank.*



631.537.1000 | www.bnbbank.com | Member FDIC

WHO'S WHO

Who's Who: Women in Professional Services

Some of Long Island's most innovative and talented business women are featured within this Who's Who: Women in Professional Services section. Their dedication and commitment to their company and to those they serve remain at the forefront of their work. In this section, top professionals from various industries on Long Island share what trend/issue they have been focusing since the kick-off of 2018.

— Lisa Morris Josefak

INDEXINDEXINDEX

4C THERESA ADAIR, RN, MBA, Good Samaritan Hospital Medical

4C LINDSEY M. ALBINSKI, Winkler Kurtz, LLP

4C MARY F. ALLEN, SHRM-SCP, New York Community Bancorp, Inc.

5C KATHY ANDERSON, RN, BSN, CNOR, Stony Brook Southampton Hospital

5C TARA ANGLIM, LCSW-R, ACHP-SW, Peconic Bay Medical Center

5C DEBORAH A. AVILES, Lewis Johns Avallone Aviles, LLP

5C NICOLE BARTHELEMY, Berdon LLP

6C MAUREEN BASDEO-ZAPATA, Friedman LLP

6C LESLIE A. BERKOFF, Moritt Hock & Hamroff LLP

6C GIGI BOUDREAUX, CPA, DSJ CPA

6C JOLIE BUA, Harris Beach PLLC

7C NANCY BURNER, Burner Law Group, P.C.

7C EVA CASALE, Suffolk Federal

7C ELLEN CHRISTIE, Pegalis & Erickson, LLC

7C VALERIE COLLINS, PH.D., Nassau Community College

8C JENNIFER B. CONA, Genser Dubow Genser & Cona, LLP

8C SUSAN CORKETT, Collard & Roe, P.C.

8C PATRICIA A. CUMMINGS, CPA, MBA, Citrin Cooperman

8C PATRICIA E. DAYE, St. Francis Hospital, The Heart Center®

9C LORI ANNE DE IULIO CASDIA, LDC Strategies

9C JANA DEITCH, MD, FACS, St. Catherine of Siena Medical Center

9C PATRICIA C. DELANEY, Lamb & Barnosky, LLP

9C ANNEMARIE diSALVO, diSalvo Interiors

9C DIANE ENGELHARDT, KPMG

10C NICOLETTE FIORE-LOPEZ, PHD, RN, CENP, St. Charles Hospital

10C THERESA GOING, BNB Bank

10C KAREN L. GOLDBERG, EisnerAmper LLP

11C MELISSA GONZALEZ, CPA, AEP® , Mazars USA LLP

12C ALEXANDRA HALSEY-STORCH, Twomey, Latham, Shea, Kelley, Dubin & Quartararo LLP

12C KATE HEPTIG, Rivkin Radler LLP

13C SHANTEY HILL-HANNA, M.S., ATC, St. Joseph's College

14C LISA HOLLAND, TD Bank

14C SAVINA INDELICATO, Valley National Bank

14C ELLEN F. KESSLER, Ruskin Moscou Faltischek, P.C.

14C CHRISTINE KINHACKL, CPA, BDO, USA, LLP

15C JENNIFER MAIZEL, Grassi & Co.

16C AMY MARION, Abrams Fensterman, Fensterman, Eisman, Formato, Ferrara, Wolf & Carone, LLP

16C DANA H. MARTI, CPA, Marks Paneth LLP

16C JACQUELYN MASCETTI, Herman Katz Cangemi & Clyne, LLP

17C LAURA J. MASSARO, Jackson Lewis P.C.

17C HAYLEY MAYER, EA, Prager Metis CPAs, LLC

18C JIL MAZER-MARINO, Meyer, Suozzi, English & Klein, P.C.

18C ALI MCCABE, CPA, Albrecht, Viggiano, Zureck & Company, P.C. (AVZ)

19C HEATHER F. MCMULLEN, MD, Syosset Hospital

19C PATRICIA MEZEUL, Flushing Bank

19C MARY E. MONGIOI, Forchelli Deegan Terrana LLP

19C EVELYN MORALES, PAC, MHA, Mercy Medical Center

20C JUDITH ANN MORAN-PETERS DNSC, RN, NE-BC, BC, John T. Mather Memorial Hospital

20C HILLARY NEEDLE, Hillary Needle Events Inc.

20C ANITA NIGREL, People's United Bank

21C JACLYN PERANTEAU, PE, Prime Engineering, P.C.

21C MELONIE PERNICE, Plainview Hospital

21C MICHELE A. PINCUS, Schroder & Strom, LLP

21C BETH HOWARD PRICE, Plessers Appliance

22C CAROLYN K. QUINN, Cohen Children's Medical Center

22C JANE REID, Empire National Bank

22C ANDREA RESTIFO, R.N., MPA, MHCDS, North Shore University Hospital

22C DENISE SIRAKOWSKI, Southside Hospital

22C CAROLYN K. QUINN, Cohen Children's Medical Center

23C STEPHANIE SUAREZ, Meltzer, Lippe, Goldstein & Breistone LLP

23C CAROLYN SWEETAPPLE, PHD, RN, CPA, South Oaks Hospital/Zucker Hillside Hospital

23C KAREN TENENBAUM, CPA, Tenenbaum Law, P.C.

23C KRISTEN TRAGANAS, Certilman Balin Adler & Hyman, LLP

24C LISA M. VACCARO, Farrell Fritz, P. C

24C TAI VICARI, Networking Marketing Specialist Media Agency, Inc.

24C MIRIAM VILLANI, Sahn Ward Coschignano, PLLC

24C JESSY WARNER-COHEN, PHD, MPH, Long Island Jewish Medical Center

26C DENISE WASLO, MSN, RN, CNOR, CSSM, Long Island Jewish Valley Stream

WHO'S WHO

Women in Professional Services

THERESA ADAIR, RN, MBA
Good Samaritan Hospital Medical



Theresa Adair, RN, MBA, is director of clinical care coordination for Good Samaritan Hospital Medical Center in West Islip, which is a member of Catholic Health Services of Long Island. Adair is responsible for the day-to-day operations of care processes and patient flow under the medical center's Aim 4 Excellence initiative. She also works with clinical care coordinators throughout Good Samaritan to enhance communication, increase coordination of care and improve patient outcome.

Prior to this position, Adair served as director of cardiovascular services at Good Samaritan where she was responsible for a complex service line inclusive of interventional cardiology, cardiothoracic surgery, critical care and interventional radiology.

Through Adair's leadership, the medical center has greatly decreased its length of stay, increased communication in all areas and enhanced patient flow, allowing for a safer and more positive experience for both pa-

tients and their loved ones.

Adair is a member of the American Nurses Association, Association of Nurse Executives and Delta Mu Delta-International Honor Society in Business Administration.

Good Samaritan Hospital Medical Center is a 537-bed (including 100 nursing home beds), voluntary, not-for-profit hospital. Good Samaritan has more than 4,000 employees and 1,000 physicians on staff and had approximately 27,000 patient admissions and 87,000 emergency department visits in 2017.

LINDSEY M. ALBINSKI
Winkler Kurtz, LLP



Lindsey M. Albinski is a partner at Winkler Kurtz, LLP in Port Jefferson Station. Albinski's practice is focused exclusively on matrimonial and family law matters, with an emphasis on the litigation of contested matrimonial matters.

She is dedicated to the representation of clients who are concerned about the preservation of their assets. Albinski provides personal attention to each client and is committed to obtaining the best outcome.

A divorce or family related litigation is an extremely emotional experience because the parties are addressing both financial matters and the overall structure of their family, Albinski said.

"I am very focused on obtaining the best possible outcome for not only my client but their children, as well," she said. "I place an extremely high importance on achieving a final outcome that will preserve the children's relationship with both parents, provide stability and facilitate productive co-parenting."

"Unfortunately, divorce is sometimes inevitable and I believe developing a new family structure that will accommodate the needs of the children is an essential element to obtaining the best possible resolution," Albinski noted. "In 2018, I have been focused on exploring new methods for achieving these goals and setting up a frame work for clients to maintain them after litigation."

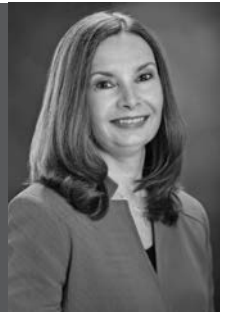
Albinski is admitted to practice law in the State of New York and is currently a member of the New York State Bar Association, the Suffolk County Bar Association and the Matrimonial Bar Association of Suffolk County. She sits on the Board of Directors of the Suffolk County Matrimonial Bar Association and has received recognition from the National Academy of Family Law Attorneys as a top nationally ranked attorney in the field of family law and the American

Institute of Family Law Attorneys for exceptional and outstanding client service.

Albinski is involved in the local community, including providing pro bono legal services to assist transgender persons through a charitable organization, and serves as a committee secretary for a local Cub Scout Pack.

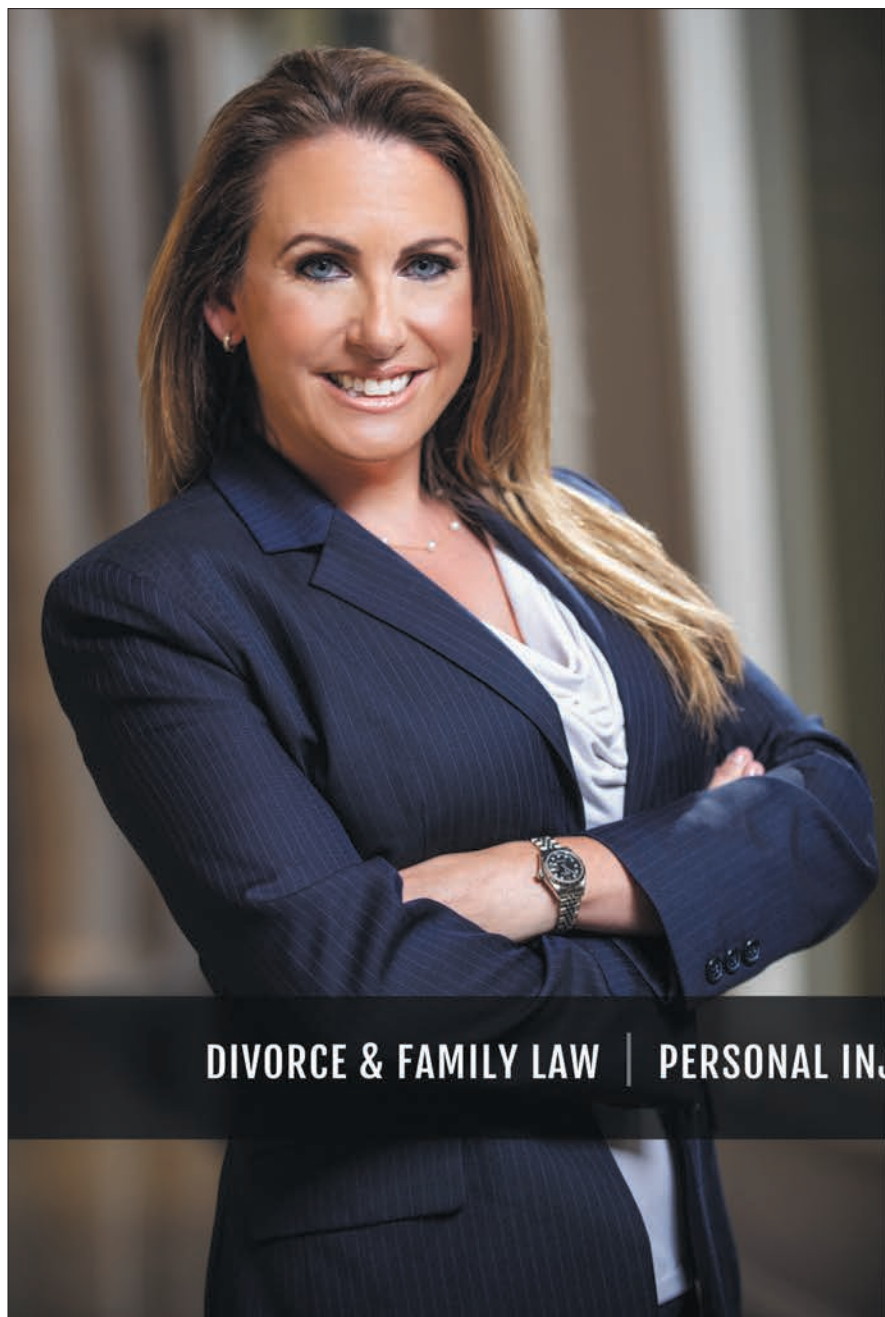
Founded in 1987, Winkler, Kurtz & Winkler, LLP is devoted to helping Long Islanders normalize their lives after a tragic accident or the loss of a marriage. Additionally, Winkler Kurtz helps its clients plan for terminal illness and death. Today, the firm has seven attorneys who have developed expertise and a commitment to his/her field of law.

MARY F. ALLEN, SHRM-SCP
New York Community Bancorp, Inc.



Mary F. Allen, SHRM-SCP is first senior vice president and director, employee relations for New York Community Bancorp, Inc. (NYCB). NYCB is the parent of two New York State-chartered banks – New York Community Bank and New York Commercial Bank.

With over 20 years of experience,



CONGRATULATIONS LINDSEY ALBINSKI

WINKLER KURTZ, LLP | ATTORNEY Family Law

and all of the
**2018 LIBN WHO'S WHO IN WOMEN
IN PROFESSIONAL SERVICES**



(631) 928-8000

www.WINKLERKURTZ.com

1201 NY-112, PORT JEFFERSON STATION, NY 11776



DIVORCE & FAMILY LAW | PERSONAL INJURY | WILLS, TRUSTS & ESTATES | REAL ESTATE



WHO'S WHO

Women in Professional Services

Allen has provided leadership to all employee levels, most notably in the areas of employee relations, workplace investigations, talent acquisition, performance management, employee engagement and diversity and inclusion. She has a highly developed skillset in the effective resolution of employee claims of discrimination and harassment and has contributed to successful employer responses to agency claims, including the New York State Division of Human Rights, EEOC and state Department of Labor offices.

Particular areas of focus for Allen in 2018 have been local hiring and diversity and inclusion.

"We regularly source qualified talent from the communities we serve," Allen said. "NYCB encourages its employees to become involved in community activities. Employees, particularly in our retail branch network, routinely participate in neighborhood events and company-sponsored charitable/volunteer organizations."

"At NYCB, we value each individual's unique capabilities and experiences, recognizing that diversity fosters creativity and innovation," Allen noted. "Our talent acquisition efforts are highly concentrated in groups that support veterans, individuals with disabilities, women and minorities, yielding meaningful results for furtherance of our diversity and inclusion goals."

Allen was responsible for the bank's affirmative action plans, ensuring compliance and robust good faith efforts, continuously evaluating for effectiveness. She has also participated in merger and acquisition activities.

Previously, Allen worked as a Human Resources professional for Canon USA, Inc.

She is a member of the Society for Human Resources Management and has her SHRM-SCP certification. Allen volunteers as a mentor through the Moxie Mentoring Foundation.

Based in Westbury, New York Community Bancorp, Inc. offers a wide range of financial products and services for individuals and businesses. At June 30, 2018, NYCB had assets of \$50.5 billion, deposits of \$29.6 billion, and stockholders' equity of \$6.8 billion at June 30, 2018.

NYCB's two bank subsidiaries feature a divisional structure. New York Community Bank serves customers through 223 branches encompassing seven divisions: Queens County Savings Bank, Roslyn Savings Bank, Richmond County Savings Bank, and Roosevelt Savings Bank in New York; Garden State Community Bank in New Jersey; Ohio Savings Bank in Ohio; and AmTrust Bank in Florida and Arizona. New York Commercial Bank and its Atlantic Bank division meet the needs of consumers and businesses through 30 New York-based branches.



KATHY ANDERSON, RN, BSN, CNOR
Stony Brook Southampton Hospital

been the OR nurse manager at Stony Brook Southampton Hospital for the last 25 years.

Anderson has worked in an operating room setting most of her nursing career. She has had many accomplishments throughout her career, but some of her most recent include her involvement in renovating the current operating room at Stony Brook Southampton Hospital and building two brand new operating rooms, including a hybrid OR in the hospital's Audrey and Martin Gruss Heart & Stroke Center.

Anderson has also embraced new services including endovascular surgery, which has involved a lot of organization, discipline and education.

Most recently, Anderson has focused on the development and accreditation of the new Electrophysiological Laboratory at Stony Brook Southampton Hospital.

"This service allows patients to receive cardiac interventions such as pacemakers, AICDs, and LOOP recorders," she said. "It was a very exciting project that involved a lot of planning and detail. New physicians were onboarded and their schedules were coordinated to fit the OR schedule. Workflows were developed to incorporate all the nursing departments involved, and an education plan included site visits, classroom teaching and the creation of competencies."

"All of this was accomplished by focusing on best practice and standards of care," Anderson noted.

One of Anderson's passions is "running the OR desk" where she often mentors, guides, supports and leads all those she works with. This includes administration, physicians, nurse managers, nurses and ancillary staff on a daily basis.

She believes that teamwork and communication among all staff is the key to success.

Her goal is to always provide safe, high-quality care to the hospital's patients.

Stony Brook Southampton Hospital is staffed by more than 280 physicians, dentists, and allied health professionals representing 48 medical specialties. A campus of Stony Brook University Hospital, Stony Brook Southampton Hospital offers a diverse array of clinical services, ranging from primary medical care to specialized surgical procedures, including orthopedics and bariatrics.

Stony Brook Southampton Hospital is a provisional Level III adult Trauma Center. The hospital includes a Heart and Stroke Center, Cardiac Catheterization Laboratory, Breast Health Center, The Center for Advanced Wound Healing, 32 satellite care centers throughout the South Fork of Long Island, and, coming late 2018, the Phillips Family Cancer Center.



TARA ANGLIM, LCSW-R, ACHP-SW
Peconic Bay Medical Center

Center (PBMC) in Riverhead, which is a member of Northwell Health.

Anglim joined Peconic Bay Medical Center in 2013 as associate director of the Palliative Care Program, which received Joint Commission Certification in 2017. Her experience there also included helping to develop a new model for in-home palliative care, establishing PBMC's first family caregiver support group in 2014 and developing the hospital's first bereavement support program in 2015.

In 2018, Anglim transitioned into her role as director of patient and family centered care where she is establishing the Caregiver Center, which will be opening in the lobby of the hospital in the Fall 2018. The Caregiver Center will house the hospital's caregiver program, as well as be home to the many different caregiver support groups, educational sessions and resource center.

Anglim is also the director of a newly-created program at PBMC under Patient Experience, focusing on the experience of patients and their families during their hospital stay.

A Licensed Clinical Social Worker, Anglim has spent her career working with families in a variety of clinical settings. She has extensive work in private practice with expertise in trauma, abuse, attachment, loss and grief.

Anglim is a member of the National Association of Social Workers, serves on the board of directors for the Long Island Family Caregiver Coalition and is on Long Island Alzheimer's Association's Medical Advisory Committee.

Peconic Bay Medical Center is a non-profit hospital committed to providing exceptional care and improving the health of the communities it serves. Peconic Bay Medical Center offers wide-ranging, full-scope services and programs along with state-of-the-art technology. Peconic Bay Medical Center joined Northwell Health in 2016 and is academically affiliated with the Donald and Barbara Zucker School of Medicine at Hofstra/Northwell.



Deborah A. Aviles is a partner in the full service law firm of Lewis Johs Avallone Aviles, LLP, which has offices in Islandia and New York City. Aviles' practice includes the supervision and trial of cases in all areas of defense litigation. In addition to handling claims against corporate defendants, her practice also involves the defense of physician and hospital malpractice, municipal and premises liability, construction and environmental litigation.

Aviles is active in a variety of professional associations. She was a founding member, former officer, and executive board member for the Alexander Hamilton Inns of Court for Suffolk County. She is a member of the Suffolk County Bar Association,

where she formerly chaired the Insurance Committee and was a member of the Judicial Screening Committee. Currently, she is a member of the Supreme Court Committee, as well as the Bench/Bar Committee. She also serves as the chair of the Independent Judicial Qualifications Commission for the 10th Judicial District.

Formerly, Aviles served on the board of directors of the Nassau-Suffolk Trial Lawyers Association, the American Lung Association of Nassau/Suffolk Counties, and Long Island University, School of Paralegal Studies.

Aviles is rated "AV" by Martindale Hubbell. She is admitted to the bar of New York State and the United States District Court for the Eastern and Southern Districts of New York. She has given numerous lectures in both the public and private sectors.

Among her many recognitions, Long Island Pulse magazine rated Aviles a Top Legal Eagle in Suffolk and Nassau Counties for civil litigation.

Founded in 1993, Lewis Johs Avallone Aviles, LLP has grown from 4 to over 70 attorneys. From its inception, Lewis Johs has steadily gained a reputation as a skilled and dynamic law firm. The firm has grown as its clients have expanded, adding practice areas along the way. Commercial litigation, real estate, insurance defense, trust and estates and elder law are among its areas of expertise.

Private clients, insurers, third-party administrators, hospitals, nursing homes and other healthcare providers, banks, corporations, manufacturers, construction companies, municipalities, credit unions and other financial institutions turn to Lewis Johs for help. The firm handles cases that range from routine automobile negligence to complex product, medical, nursing home and environmental litigation, as well as high stakes commercial litigation and corporate and business matters, including business formations, corporate governance and mergers and acquisitions.



Nicole Barthelemy is a principal in Berdon LLP's audit department with more than 10 years of professional experience in public accounting.

Among Barthelemy's areas of expertise include preparing and reviewing GAAP, income tax basis, and special purpose financial statements; reviewing partnership and corporate tax returns; performing certiorari filings and operating expense and real estate escalation audits; developing tax projections for potential sales and purchases as well as determining the tax implications of various types of debt restructuring and like-kind exchanges; analyzing new construction developments; advising startups and growing businesses on tax planning and guiding

WHO'S WHO

Women in Professional Services

them in setting up and maintaining records.

Barthelemy also provides an array of accounting, auditing, and tax services for clients throughout the real estate and hospitality industries. She works closely with real estate owners, managers, developers, and investors as well as REITs, that are involved in a broad spectrum of properties — among them residential, commercial, retail, and shopping malls as well as properties under development. In the hospitality arena, she has a particular specialty in guiding clients in the food and beverage sector.

Barthelemy has been concentrating on expanding the Real Estate Practice on Long Island. She has been working with many Long Island real estate focus groups, including LIREG and CoreNet.

“Berdon LLP has been around for over 100 years and is a top ranked CPA firm specializing in real estate,” Barthelemy said. “Since 2015, I have been splitting my time between Berdon’s NYC and Jericho offices. This year, I moved permanently to the Jericho office in order to help lead the real estate practice group. My efforts have focused on business development, increasing brand recognition and allocating more firm resources to the Long Island real estate market.”

“To achieve this end, I have been working with our Jericho staff in training and have been actively involved in various organizations, such as LIREG,” Barthelemy noted.

Barthelemy is a member of American Institute of Certified Public Accountants, New York State Society of Certified Public Accountants and Long Island Real Estate Group.

Berdon LLP, with offices in New York City and Jericho, is consistently ranked among the nation’s top CPA and advisory firms. With over 350 professionals and staff — at offices in Jericho and New York City — clients can access a comprehensive array of accounting, tax, financial, and management advisory services. Berdon advises on almost every aspect of a business at any stage of development — from start-up through growth, diversification, and succession. Berdon is a recognized leader in advising the real estate industry and works with numerous businesses in the hospitality, not for profit, manufacturing and distribution sectors as well as high net worth individuals. If needs cross international borders, Berdon service extends worldwide through membership in TIAG, a global alliance of more than 115 independent accounting firms in over 65 countries.



**MAUREEN
BASDEO-
ZAPATA**
Friedman LLP

Maureen Basdeo-Zapata is a tax manager at Friedman LLP’s Uniondale office. With more than 10 years of experience in public accounting, Basdeo-Zapata delivers personalized tax and advisory services to a variety of cli-

ents ranging from small businesses and large corporations to high-net-worth individuals and their families.

Basdeo-Zapata’s expertise includes reviewing individual, corporate, partnership, trust, gift and estate tax returns; fostering long-standing client relationships; performing income and business tax planning; and assisting with notices and audits from federal and state taxing authorities.

When she isn’t in the office, Basdeo-Zapata dedicates much of her time to youth empowerment as an active youth group leader with her local church. She assists adolescents in handling personal issues on a daily basis. Basdeo-Zapata recently completed a church mission trip guide focusing on educating rural outposts on modern day technology capabilities.

Basdeo-Zapata’s main focus in 2018 has been guiding clients on the tax law changes under the Tax Cuts and Jobs Act — particularly itemized deductions.

“A concern for New York and Long Island based clients, who reside in high income and property tax jurisdictions, has been the new \$10,000 limitation to state and local and property taxes,” Basdeo-Zapata said. “I work closely with clients to help maximize their tax position as we navigate unfolding guidance from the IRS.”

“Friedman has stayed on the pulse of tax reform changes and we have assembled a task force to educate clients in real-time,” she noted.

Friedman LLP has been serving the accounting, tax, and business consulting needs of public and private companies since 1924. The firm’s industry focused practice features concentrated areas of expertise and understanding of the economic environment. Friedman LLP’s clients benefit from hands-on contact with the firm’s partners, cutting-edge technical expertise and the firm’s understanding of their industry and their business.



**LESLIE A.
BERKOFF**
*Moritt Hock &
Hamroff LLP*

Leslie A. Berkoff is a partner with the law firm Moritt Hock & Hamroff LLP where she serves as chair of the firm’s Creditors’ Rights and Bankruptcy Practice Group. Berkoff concentrates her practice in the area of bankruptcy and restructuring litigation and corporate workouts, and she represents a variety of corporate debtors, trustees, creditors and creditor committees both nationally and locally. Her practice also includes an emphasis on equipment leasing and healthcare law. Berkoff is also an experienced litigator and handles corporate transactions both locally and nationally.

Berkoff also has an active alternate dispute resolution practice and frequently serves as a mediator, and is also a trained arbitrator.

Over the past year, Berkoff has continued to expand her Alternative Dispute Resolution Practice both within the restructuring industry and within

the commercial arena.

“As the costs of litigation continue to rise and companies become increasingly mindful of these burgeoning costs, alternative means of resolving disputes continues to be a logical outgrowth,” she said. “To that end, I have focused a significant amount of my time to mediation and arbitration as part of my day-to-day practice primarily as a neutral.”

“I am delighted to note that I have recently been added as a panelist to the American Arbitration Association and asked to continue to serve as the Business Law Section of the American Bar Association’s representative on the Dispute Resolution Council,” Berkoff said.

Berkoff is on the Mediation Panels for the Eastern, Southern and Northern Districts of the United States Bankruptcy Courts in New York and the United States Bankruptcy Courts in Delaware and the Eastern District of Pennsylvania, as well as the Commercial Mediation Panel for Nassau County.

Berkoff is admitted to practice in New York and Connecticut and has been named a New York Super Lawyers® in 2014 – 2017.

Among her many affiliations, she is co-chair of the International Women’s Insolvency and Restructuring Confederation’s (IWIRC) Advisory Council; serves in the Business Law Section of the American Bar Association as membership chair of the Business Bankruptcy Committee, as well as program chair of the Bankruptcy Court Structure and Insolvency Process Committee and vice chair of the ADR Committee. She is also a member of Women’s Advocate Council of the Litigation Section of the ABA and a member of Women in Dispute Resolution. Berkoff is also a member of the Nassau County Bar Association.

Moritt Hock & Hamroff LLP, established in 1980, is a full-service, AV-rated commercial law firm with 20 areas of practice and 70+ attorneys. The firm is based in New York with offices on Long Island and in Manhattan and provides a wide range of legal services to businesses, corporations and individuals worldwide.

Moritt Hock & Hamroff’s diverse practice areas include: alternative dispute resolution, commercial lending & finance, construction, copyrights, trademarks & licensing, corporate & securities, creditors’ rights & bankruptcy, cybersecurity, employment, equipment & transportation leasing and finance, healthcare, landlord & tenant, litigation, marketing, advertising & promotions, mergers, acquisitions & private equity, not-for-profit, patents, real estate, tax and trusts & estates.



**GIGI
BOUDREAUX,
CPA**
DSJ CPA

Gigi Boudreaux, CPA is a partner at DSJ CPA, a full service accounting firm in Westbury.

After several years as CPA at a Big Four firm in Manhattan, Boudreaux

moved to a smaller Long Island based firm where her focus shifted to smaller companies. She sees herself as a consultant, therapist and tax advisor all rolled into one. For Boudreaux, helping and mentoring are key motivators.

While she considers herself a tax generalist, Boudreaux has served numerous clients in the highly tax-specific fields of real estate, distribution, manufacturing and construction.

“As a relatively new partner to DSJ, my focus has been on developing our continually expanding tax department,” Boudreaux said. “I consider myself a ‘Tax Jack of all Trades’ and, as such, our firm handles all types of tax matters including, but not limited to, businesses, individuals, trusts and estates, and international matters.”

“Most recently, my focus has been working on offers in compromise,” she noted. “I find that there are many taxpayers who are unaware of the opportunities to significantly reduce their tax debt. While the process is arduous, extensive and long, I remain committed through the process and the results are life-changing for the taxpayer. I find this task to particularly rewarding.”

Boudreaux is a member of AICPA and NYSSCPA, sits on the board of the Biltmore Shore Civic Association and is a member of the Moxie Mentoring Foundation.

Operating since 1972, DSJ CPA is a full-service accounting firm with expertise in not-for-profits, healthcare and the food & beverage industry. DSJ CPA provides accounting and bookkeeping services including budgeting, cash flow analysis and regulatory compliance to myriad businesses on Long Island and in the tri-state region. The firm’s core values of leadership, knowledge, service and integrity serve as its foundation.



JOLIE BUA
*Harris Beach
PLLC*

Jolie Bua is office manager at the law firm of Harris Beach PLLC in Uniondale where she oversees business and administrative matters. It’s her second time with Harris Beach, having worked as a legal assistant between 2010 and 2013.

“As a former Harris Beach employee who helped establish the Uniondale office in 2010, it’s been an exciting and rewarding return,” Bua said. “In addition to managing the day-to-day happenings of a 30-person office, my primary focus since arriving has been growth. I collaborate with attorneys and staff on growing our downstate client base, on expanding our team, and in furthering the development of our office culture. As a firm believer in the importance of a strong organizational culture, and the power it can have when aligned with the organization’s vision and goals, this last aspect is especially important to me.”

“It can be challenging at times to know that I’m making meaningful

WHO'S WHO

Women in Professional Services

progress, but I've found that pausing, reflecting, and refocusing keeps me moving in the right direction," she said.

Prior to her return to the firm, Bua worked in progressively more responsible positions at Stony Brook University — first as assistant to the senior associate vice president for university advancement, then as HR business coordinator for University Advancement. In 2013, she worked as finance director during the campaign of Tom Suozzi for Nassau County Executive.

Harris Beach and its subsidiaries provide a full range of legal and professional services for clients across New York state, as well as nationally and internationally. Harris Beach is among the country's top law firms as ranked by the National Law Journal and is among the 2017 BTI Elite law firms based on in-depth interviews of more than 600 corporate counsel at the world's largest and most influential companies.

The firm's clients include Fortune 100 corporations, privately-held companies, emerging businesses, public sector entities, not-for-profit organizations and individuals. Principal industries Harris Beach represents include education, energy, financial, food and beverage, health care, insurance, manufacturing, medical and life sciences, real estate developers, and state and local governments and authorities.

Harris Beach has 10 offices across New York, including Rochester, Buffalo, Syracuse, Ithaca, Albany, Saratoga Springs, White Plains, New York City, Melville and Uniondale.

NANCY BURNER
Burner Law
Group, P.C.



Nancy Burner founded Burner Law Group, P.C., a full service elder law firm concentrating in the areas of estate planning, trust and estate administration and litigation, special needs planning, guardianship and elder law. Launched in 1995, Burner Law Group prides itself on the quality, personal care and attention it provides to each client from its offices in Setauket, and Westhampton Beach and New York City.

Burner holds the designation of a Certified Elder Law Attorney (CELA), which is awarded by the National Elder Law Foundation as accredited by the American Bar Association. She is a member of the Elder Law and Trust and Estates sections of the New York State Bar Association, the Suffolk County Bar Association and the Real Property, Trust and Probate Committee of the American Bar Association.

For 10 consecutive years, Burner has been named as a Super Lawyer in the field of elder law. Super Lawyers, part of Thomson Reuters, is a rating service of outstanding lawyers from more than 70 practice areas, who have attained a high degree of peer recognition and professional achievement.

Burner is admitted to practice law in the State of New York. She frequently lectures on the legislative changes, financial implications and governmental benefits affecting the elderly and special needs population. In 2016, she was named as an Outstanding Woman in Law by Hofstra University School of Law Center for Children Families and the Law. She was also named a 2016 Big Apple Entrepreneur winner by Manhattan magazine.

Burner Law Group, P.C. offers effective planning to preserve a client's hard-earned assets while anticipating the future need for assisted or long-term care. The firm assists clients with careful tax planning and offers guidance with the creation of a comprehensive estate plan to significantly reduce estate tax liability.

Burner Law Group, P.C. also assists seniors and their families with discharge planning and placement in nursing homes, adult homes, assisted living facilities and facilitating home care, when necessary. In addition, the firm advises clients when they are faced with sudden illness and helps them get the quality care they need, while preserving their assets to the greatest extent possible.

EVA CASALE
Suffolk Federal



Eva Casale is vice president of information technology at Suffolk Federal. Casale is responsible for overseeing all aspects of the information technology department including management, implementation and usability of technology and computer systems in support of the credit union's mission and goals. She is responsible for analyzing these technologies in order to determine the best options that will benefit the organization's membership, while providing development opportunity to her internal team.

Strategically, information technology is a multi-focal area, Casale noted.

"In the financial industry, cybersecurity is at the forefront, every day," she said. "Enhancing technology, building a strong secure infrastructure and continuing to evolve in data mining and analytics are all critical focal points. It is also important to have an innovative approach to digital technology. Implementing a new engaging digital platform is an exciting project for 2018 that will enhance our member's online, mobile, and hands-free banking experience."

Casale has been running marathons since 1983 and since that time, she has run 58 full marathons and 45 ultra-marathons. During the past several years, Eva has paired her passion for running with support for charitable organizations. To date, Eva has raised more than \$280,000 for several organizations including the Leukemia and Lymphoma Society and Hope for the Warriors. She was also honored by 9-1-1 Veterans as "Civilian of the Year" during their 10th Annual Veter-

ans Appreciation event.

Suffolk Federal is a not-for-profit cooperative financial institution chartered in 1967 by the National Credit Union Administration (NCUA), and is owned and operated by its members. The volunteer-directed credit union has assets in excess of \$1 billion and more than 55,000 members. Suffolk Federal offers all members a myriad of benefits like free checking, free online banking, low interest rates on home and auto loans and much more. Membership is open to anyone who lives, works, worships, attends school or regularly conducts business in Suffolk County, NY as well as immediate family members of current membership.

ELLEN CHRISTIE
Pegalis &
Erickson, LLC



Ellen Christie is director of marketing and communications Pegalis & Erickson, LLC (P&E) where she develops and manages the marketing programs for the well-regarded New York medical malpractice and personal injury law firm.

Christie joined Pegalis & Erickson in 2012. She directs the firm's business development, internal and external communications programs. She launched the firm's first public education campaigns, online and TV advertising, electronic newsletters, and internal branding campaigns. Through her own consultancy, E.C. Public Relations, she also provides clients with marketing and PR, website building, and social media management.

Working in the legal field, Christie has a great understanding about the commitment and expertise the attorneys deliver at Pegalis & Erickson.

"Think you know all about lawyers?," asked Christie. "I suggest you reconsider."

"Lawyers are held to restrictive ethical standards, especially for marketing and advertising," she said. "Other industries would find such restrictions impossible to follow. My attorneys' lack of bias makes the adage 'never assume' a mantra. They care for you as if you are their only client. I see P&E attorneys' patience and knowledge with our clients and with strangers, every day." "Also, there's no 'billable hours' in personal injury law," Christie said. "I joke that medical negligence law is the nonprofit of law. Of course, they get paid, but only and if and when the injured person does."

Prior to joining Pegalis & Erickson, Christie worked for Girl Scouts of the USA, where she directed media and resources for 300 offices, produced videos, promoted program developments, and worked with corporations and celebrities. She began her career at the ATC PR agency working on sports and food accounts like Diversified Products, Big G Cereals, Yoplait Yogurts, The Women's Sports Foundation and the United States Tennis Association.

Among her awards, Christie re-

ceived the 2012 International Association of Business Communicators' (IABC -LI) Achievement Award for Community Service. She has served as both board director and first vice-president of Public Relations Professionals of Long Island, and on the board of directors of RotaCare NY.

Pegalis & Erickson, LLC in Lake Success serves people suffering as a result of medical errors and personal injury. The firm works with clients after hospitals, doctors, medical personnel, construction companies, or automobile drivers commit avoidable errors that cause our clients life-altering harm.

The firm is known for providing clients individualized attention and discovering avoidable negligent acts even in the most complex cases. The firm has obtained some of the largest verdicts and settlements in New York State history for victims of negligence and substandard care.

VALERIE COLLINS, PH.D.
Nassau
Community
College



Valerie Collins, Ph.D. was appointed interim vice president of Academic Affairs at Nassau Community College (NCC) in 2016.

Educated at NYU, she received a National Institute of Mental Health Traineeship to pursue a Masters Degree followed by a Ph.D. in Higher Education Administration. Her research interest has focused on the faculty role in governance.

At NCC, she serves as Accreditation Liaison Officer, providing leadership on accreditation activities. Dr. Collins was instrumental in establishing the Institutional Planning Committee, currently serving as co-chairperson. She worked to launch a new strategic planning process, and with the faculty, chairs and deans developed the first Academic Master Plan at the College.

Dr. Collins is proud of the many opportunities available for students, such as internships, distance education and trips to study abroad.

"The Collaborative Online International Learning (COIL) program provides opportunities for students to obtain international experience without leaving the campus," Dr. Collins said. "Professors COIL their course with their students and connect with students and faculty from another country. Developmental education has been revamped to enable students to take for-credit courses along with co-requisite developmental courses."

Numerous student clubs and activities, such as its nationally and internationally recognized debate team, are also available on at NCC, which is part of the SUNY system, she noted.

"SUNY colleges are recognized for science, technology, engineering and mathematics (STEM) initiatives," Dr. Collins explained. "NCC is currently implementing two SUNY STEM grants including a Performance Improve-

WHO'S WHO

Women in Professional Services

ment Fund grant with Stony Brook University to assist NCC's Engineering Department to Build Bridges for Underrepresented Students to STEM Programs."

Nassau Community College is located in Garden City. The college, recently awarded an historic designation, has more than 20,000 full time, part time, Workforce Development and continuing education students pursuing their studies in higher education in more than 70 fields of study from health-related majors to business, marketing and the liberal arts. Among the largest single campus community colleges in New York State, Nassau Community College has maintained a national reputation for excellence for 60 years.

JENNIFER B. CONA

Genser Dubow Genser & Cona, LLP



Jennifer B. Cona is managing partner at Genser Dubow Genser & Cona, LLP (GDGC), an elder law firm in Melville. Cona's practice focuses on both health care facility representation, including complex Medicaid eligibility matters, guardianships, fair hearings, and civil litigation, as well as representing seniors and their loved ones with the preservation of assets, Medicaid planning, estate planning, wealth transfer strategies, administration of estates, estate litigation, contested guardianships and special needs planning.

Under Cona's guidance, the firm works to secure and ensure a payment source for long term health care, working together with both families and health care facilities to sustain quality care for older adults.

This year, Cona and her team have been focused on the client experience.

"My firm's mission is to inspire and empower older adults to embrace aging with support and resources through a holistic approach to elder law," she said. "As the #1 elder law and estate planning firm on Long Island, we often work with families in crisis due to failure to plan ahead. From that lesson, we educate and encourage the adult children to tend to their asset protection and estate planning needs."

"I like to invent creative programming to solve clients' challenges," Cona noted. "I am examining client services, multigenerational demands, and the increasing need for family mediation services."

Cona is the recipient of numerous awards for her business acumen and commitment to the community. She is rated a Super Lawyer by The New York Times. She was named in the inaugural class of the New York Law Journal's 2016 Top Women in Law, as well as the inaugural class of Hofstra's Outstanding Women in Law.

Cona is chair of the board of trustees of the Long Island Alzheimer's Foundation and serves on the board of United Way of Long Island. She is the founder and chair of the Advanced Elder Law Focus Group, an industry

think-tank.

Genser Dubow Genser & Cona LLP is a top rated and well-respected law firm concentrating in the areas of elder law, estate planning, estate administration and litigation, and health care facility representation. The firm combines creative advocacy with cutting edge planning strategies to deliver exceptional legal services to both families and the health care industry, finding innovative solutions to ensure older adults receive quality care.

GDGC takes a holistic approach to elder law, providing support and resources for seniors and caregivers, and maintains long-term, partnering relationships with clients to provide the best solutions for multiple generations. The firm was honored as "A Firm That Makes a Difference" by the Hauppauge Industrial Association.

SUSAN CORKETT

Collard & Roe, P.C.



Susan Corkett has served as office manager for Collard & Roe, P.C. in Roslyn for over a dozen years. Corkett coordinates the firm's docket, computer systems and marketing activities. She joined Collard & Roe, P.C. after 16 years in management consulting specializing in the financial services industry. Corkett consulted to firms such as Prudential Global Management, Equitable Asset Management, Chancellor Capital Management, and CIGNA Insurance.

Today, interest has revived in women's parity, noted Corkett, who takes great pride in working for an intellectual property law firm that fosters the rights of women inventors.

"At Collard & Roe, P.C., women constitute a substantial portion of the firm's personnel and management," Corkett said. "Historically, women have represented a small proportion of those who sought patent protection, but the number of women inventors now increases daily."

Corkett and the firm recognize the worth in nurturing women inventors and encourage them to contact Collard & Roe to receive realistic, positive appraisals and imaginative solutions toward obtaining rewarding protection for their inventions.

Collard & Roe, P.C. is a boutique intellectual property law firm that specializes in patent, trademark, and copyright law. Founded in 1966, the firm has obtained more than 21,000 patents and 21,000 trademarks. Collard & Roe assists clients in prosecuting patent, trademark, and copyright applications as well as in litigating patent, trademark, and copyright infringement cases. The firm also handles patent, trademark, and copyright licensing and protecting domain names and trade secrets.

Collard & Roe, P.C. supports innovation by filing patents and trademarks for clients ranging from local inventors to international corporations. The firm serves clients in the United

States and throughout the world in all aspects of intellectual property in areas such as engineering, chemistry, computer programming, and biotechnology. From its historic involvement in the patenting of PVC (polyvinyl chloride) nearly 50 years ago, to its current involvement in advanced technologies, Collard & Roe handles any intellectual property law issue.

PATRICIA A. CUMMINGS, CPA, MBA

Citrin Cooperman



Patricia A. Cummings, CPA, MBA is co-managing partner of Metro New York at Citrin Cooperman and managing partner of industries for the firm, which has office in NYC and Melville. Cummings also serves on the firm's Executive Committee, chairs the Audit and Attest Committee and leads the Women's Initiative (CC WIN).

Cummings has 25 years of experience providing audit, accounting, and advisory services to public and private multinational clients in a number of industries, including focusing on the medical device and life science industries. Her client service experience includes leading sophisticated engagements and helping clients confront challenging business issues. She has extensive experience in acquisitions, divestitures, complex financial reporting issues, and capital-raising transactions, including initial public offerings. In addition, Cummings has experience in the area of bankruptcy accounting and reporting.

Cummings has spent this year working with clients that are focused in the medical device and life sciences industries, particularly those companies engaged in the development of new devices, therapies and drugs.

"With these types of entrepreneurial, emerging-growth companies, one significant business issue facing management is continued access to capital in order to bring their respective products through the cycle of development, regulatory approval and commercialization," Cummings said. "I work with my clients, their management teams and their other outside advisors providing accounting, tax, and business advice as they continue to scale, fundraise, and work to bring their products to market."

Prior to joining Citrin Cooperman, Cummings spent 17 years with Grant Thornton LLP, as an assistant managing partner of its New York office, where she led audit engagements for global companies and served as the engagement quality review partner for other clients. She began her public accounting career with a 'Big Four' accounting firm.

Citrin Cooperman, headquartered in NYC, is among the largest, full-service assurance, tax and business advisory firms in the United States, having steadily built its business serving a diverse clientele since 1979. The firm's daily mission is to help its clients "focus on what counts." Citrin

Cooperman provides a comprehensive, integrated business approach to traditional services, which includes proactive insights throughout the lifecycle of its clients wherever they do business, across the globe.

The firm provides a full range of attest, tax and specialty tax, business advisory, economic advisory, and transaction support services through its industry-focused groups, including health care, life sciences, manufacturing and distribution, technology, not-for-profit, and financial services. Citrin Cooperman is an independent firm associated with Moore Stephens International Limited.

PATRICIA E. DAYE

St. Francis Hospital, The Heart Center®



Patricia E. Daye is vice president of ambulatory services at St. Francis Hospital, The Heart Center® in Roslyn, which is a member of Catholic Health Services of Long Island. Daye is responsible for several inpatient ancillary support departments, as well as overseeing the operations of several physician practices. She also serves as the physician liaison to the hospital for those providers clinically employed by St. Francis.

Daye works to design, operationalize and grow new programs to expand services to the community. She also supervises St. Francis outpatient satellite facilities including the DeMatteis Center for Cardiac Research and Education in Greenvale, South Bay Cardiovascular in West Islip, Bishop McHugh Health Center in Hicksville and the multispecialty St. Francis Hospital Ambulatory Services Center in East Hills.

During the course of 2018, Daye has been focused on the value of coaching.

"Our health care industry has been evolving and changing so rapidly and in so many ways and I see long term staff getting frustrated and challenged by the swiftness of change while trying to hold on to the tangible caring that led them into health care in the first place," Daye said. "I see less seasoned staff getting frustrated with why change takes so long while trying to negotiate tangible caring more efficiently."

"As we work together, I believe it is important, as a leader, to understand and coach our staff so they can be effective and professionally and emotionally engaged in their service no matter where in their career path they are."

Prior to joining St. Francis Hospital almost eight years ago, Daye was executive director of the Center for Advanced Medicine at the North Shore-LIJ Health System. Additionally, she held positions in the Riverside Healthcare System as vice president of operations for St. John's Riverside Hospital and executive vice president & COO for St. John's Riverside and Yonkers General Hospitals.

Daye serves on the boards of ANDRUS Children's Home and Christian Life Center Church.

St. Francis Hospital, The Heart

WHO'S WHO

Women in Professional Services

Center® is New York State's only specialty designated cardiac center and a nationally recognized leader in the diagnosis, treatment, and prevention of cardiac disease. St. Francis is ranked one of the best hospitals in America by U.S. News & World Report and has earned the prestigious Magnet designation for nursing excellence.

A leader in cardiovascular care for more than 50 years, St. Francis Hospital also offers an outstanding program in vascular, prostate, ear-nose-throat (ENT), abdominal, oncologic, gastrointestinal, and orthopedic surgery.

LORI ANNE DE IULIO CASDIA

LDC Strategies



Lori Anne De Iulio Casdia is founder and owner of LDC Strategies (formerly PTP Consultants), a full service marketing and public relations strategy firm in Mount Sinai. LDC Strategies specializes in strategic planning, marketing audits, target marketing and public relations.

As a marketing and public relations strategist with 25 years of experience in marketing and public relations, De Iulio Casdia assists companies in developing comprehensive marketing strategies and plans.

"We focus on developing strategies with our clients to grow their business and elevate their companies, products/services and people," De Iulio Casdia said. "Lifting others up and seeing them achieve their goals is our focus."

"I deeply believe that we are here to serve others," she noted. "Providing opportunity for each to be and achieve their best. The rest follows."

De Iulio Casdia is also the host of Healthy Lifestyle on LI News Radio 103.9 and contributing columnist for Long Island Business News.

LDC Strategies provides comprehensive communication and branding services to a diverse set of clients, from the smallest start-up venture to established international corporations. The firm serves a wide variety of clients, including those who want a new look, people changing industry, job seekers, executives, PR agencies and more. LDC Strategies' goal is to help clients gain the competitive edge they need to advance their career or move their business forward.

JANA DEITCH, MD, FACS

St. Catherine of Siena Medical Center



Jana Deitch, MD, FACS is medical director of The Breast Health Program at St. Catherine of Siena Medical Center in Smithtown, which is a member of Catholic Health Services of Long Island. Dr. Deitch works with

a team of breast experts who are committed to providing advanced, comprehensive breast health care to the community.

Dr. Deitch is board certified by the American Board of Surgery and is a fellowship trained breast surgical oncologist. She completed her general surgery residency at Maimonides Medical Center and completed a breast surgical oncology fellowship at Beth Israel and Mount Sinai, accredited by the Society of Surgical Oncology.

The American Cancer Society estimates 266,120 new cases of invasive breast cancer will be diagnosed in women this year alone, Dr. Deitch noted. "The expert clinicians at St. Catherine of Siena Medical Center urge you to take the time to understand early screening and options," she said. "St. Catherine of Siena offers comprehensive Breast Health Services, with a focus on early detection and patient education, advanced diagnostic and breast-conservation techniques, offering minimally invasive surgeries, in a supportive, patient-centered environment."

Most breast cancers do not have any signs, Dr. Deitch said. "That is why it is so important to have your annual screening mammogram, which detects breast cancer in its earliest stage," she explained.

St. Catherine of Siena Medical Center has served the residents of the Smithtown area for more than 50 years. The campus is comprised of a 296-bed, not-for-profit community hospital; a 240-bed nursing and rehabilitation care center; and a 60,000 square foot medical office building. The nurses, physicians and support staff are devoted to providing advanced health care in an environment of compassion to patients, their families and the community.

PATRICIA C. DELANEY

Lamb & Barnosky, LLP



Patricia C. Delaney is counsel at the law firm of Lamb & Barnosky, LLP in Melville. Delaney has extensive experience in commercial lending, banking, leasing and real estate transactions. She has been counseling clients from the New York metropolitan area to the East End of Long Island since 1986.

Delaney has noticed the 2017 Tax Cuts and Jobs Act is significantly impacting her clients in their real estate, banking and business transactions.

"Most clients are familiar with the new tax rates and the elimination of mortgage, state and local taxes deductions, but they may not understand other relevant provisions, such as changes in the alternative minimum tax exemption amounts, the deduction of qualified business income for certain business entities or maintenance of 1031 exchange benefits for real property transactions," Delaney explained. "I work with my clients

to ensure that they understand the Act and are better equipped to make decisions when considering their next real estate or business transaction."

She has counseled publicly traded corporations in the preparation of their annual disclosure filings with the Securities and Exchange Commission as well as privately owned entities in their formation, business acquisitions and sales.

Delaney served as general counsel to Bank of Smithtown and Smithtown Bancorp. Prior to joining the firm, she was working in her own practice that she established and managed. She also served as senior underwriting counsel for First American Title Insurance Company where she analyzed and assessed legal risk associated with insuring real estate transactions.

Delaney has consistently received an AV Preeminent Attorney rating from Martindale-Hubbell.

Lamb & Barnosky, LLP is a full-service law firm in Melville representing a variety of corporate, municipal and individual clients. Its location, in the center of Long Island, positions the firm to easily to serve clients in the entire metropolitan area.

Founded in 1981, the firm enjoys an AV rating from Martindale-Hubbell, the nationally recognized legal directory, for the highest standard of legal ability and professional standards of conduct and ethics. It has also been named to the National Register of Preeminent Lawyers.

ANNEMARIE diSALVO

diSalvo Interiors



Annemarie diSalvo is president and co-founder of diSalvo Interiors, a leading interior design firm in Westbury, which handles a broad range of projects throughout the tri-state area and beyond.

diSalvo studied interior design at Fashion Institute of Technology, and Fine Arts at New York University. After leaving college, she worked at a large firm in Manhattan specializing in residential interiors. Her wide range of experience left her with the skills and desire to launch her own firm in 1996.

She is highly sought after by architects, builders and developers to bring a fresh and unique perspective to residential, corporate, and restaurant design. A true student of design, diSalvo is well equipped to design any traditional, contemporary, or modern space.

Pivoting their attention to multi-family and commercial design over the last few years has changed the way diSalvo and her team manages time, diSalvo noted. "Streamlining our administrative and specification process has become paramount in our office," she said.

"Developers need creative solutions in order to showcase the latest innovations in design and amenities in order to attract buyers and tenants

alike," diSalvo said.

"We are also streamlining our document sharing," diSalvo explained. "By utilizing tools like Dropbox, we can share our documents in mid-design in order to receive feedback from the entire team, such as the developer, the marketing team, and the listing brokers. Less time is wasted and everyone stays on the same page."

diSalvo is very active with the Long Island Builders Institute. She also sits on the board of directors of Long Island Home Builders Care and is a member of the American Institute of Architecture, as well as the American Society of Interior Design.

diSalvo Interiors designs and specifies for condo and apartment developments, custom homes for individual homeowners, as well as spec homes for developers. Model apartments and homes, as well as clubhouses are some of its favorite projects, as this forum allows the firm to flex its creative muscles and create innovative spaces.

diSalvo Interiors' designs reflect the current lifestyle and preferences of its clients and are executed in timeless style. Knowledgeable in the construction process, the firm's design team believes a partnership between architect, designer, client and builder is essential to any new construction or renovation project.

Founded 22 years ago, diSalvo Interior is an award-winning firm. Its most recent awards include the 2017 LIBI Rising Star; the 2017 LIBI Double Diamond Award; and the 2015 ASID Architecture Award.

DIANE ENGELHARDT

KPMG



Diane Engelhardt is a senior manager in KPMG's Metro New York Audit/Independence Group in Melville. Engelhardt has a diverse background performing audits in accordance with Public Company Accounting Oversight Board standards, and auditing Employee Benefit Plans and private companies.

Engelhardt has served both internal and external clients in numerous roles throughout her over 30-year career with KPMG.

Engelhardt currently works in the firm's Independence Group developing comprehensive programs to monitor engagement team compliance with independence related firm policies and procedures.

During 2018, she has focused on KPMG's compliance with auditor Independence requirements, specifically compliance with and monitoring KPMG's internal Independence policies and procedures. "I identify risks and controls that address those risks, and make recommendations to improve and enhance various processes to ensure we meet regulatory independence requirements," Engelhardt said.

"Compliance with Independence standards is a professional responsibility," Engelhardt said.

WHO'S WHO

Women in Professional Services

bility for providing audit, review and other attestation services," she said. "It is essential to serving the best interests of our clients and the capital markets, and to furthering KPMG's reputation for integrity and quality."

Engelhardt engages employees to get involved and give back to the community through KPMG's Family for Literacy and the Interfaith Nutrition Network (The INN). She is also a board member the National Multiple Sclerosis Society, Long Island Chapter.

She is also a member of the American Institute of Certified Public Accountants and New York State Society of Certified Public Accountants.

KPMG is one of the world's leading professional services firms, providing innovative business solutions and audit, tax, and advisory services to many of the world's largest and most prestigious organizations.

KPMG LLP is the independent U.S. member firm of KPMG International Cooperative (KPMG International). KPMG International's independent member firms have 197,000 professionals working in 154 countries.

**NICOLETTE
FIORE-LOPEZ,
PHD, RN, CENP**
St. Charles
Hospital



Nicolette Fiore-Lopez, PhD, RN, CENP is chief nursing officer at St. Charles Hospital in Port Jefferson, which is a member of Catholic Health Services of Long Island. Fiore-Lopez, who is Certified in Executive Nursing Practice (CNEP), is responsible for the hospital's administrative and organizational plan for providing nursing care to patients through strategic planning, resource allocation and evaluating patient outcomes. Her administrative responsibilities include the dental residency program and chemical dependence rehabilitation as well as developing working relationships with members of the medical staff, clinical leaders and department heads.

Fiore-Lopez also participates in numerous system-wide committees for Catholic Health Services including performance improvement, information technology and medication safety. Fiore-Lopez is certified in Executive Nursing Practice (CNEP).

In the past year, Fiore-Lopez has been championing the hospital's efforts surrounding patient safety and patient throughput.

"We have instituted a hospital wide training program that encourages transparency in reporting and emphasizes error prevention techniques," she said. "Additionally, we have changed our case management model to a care coordination model that has allowed us to be more proactive in managing each patient's hospital stay and aftercare."

"Finally, we initiated weekly leadership rounding that focuses on reinforcing our patient safety and care coordination principles," Fiore-Lopez said. "Our improved outcomes clearly indicate that our efforts have been highly successful."

Fiore-Lopez has represented St. Charles Hospital in numerous local and statewide patient safety and patient satisfaction initiatives and was a driving force behind hospital certifications that include Joint Commission Disease-Specific Accreditation in stroke and orthopedics for hip and knee replacement. In addition, she was instrumental in the development of a pain management and palliative care program at St. Charles and piloted Catholic Health Services community outreach program, Healthy Sundays.

Fiore-Lopez was also instrumental in choosing an electronic medical record system when Catholic Health Services converted the system from paper to an EMR in 2013.

St. Charles Hospital is a 243-bed, not-for-profit community hospital. The hospital hosts one of the largest obstetrical programs in Suffolk County, a technologically advanced orthopedic surgery service and the region's most comprehensive and CARF-accredited inpatient and outpatient rehabilitation program for children and adults.

St. Charles also offers services in general surgery, colon/rectal surgery, bariatric surgery, neurosurgery, ENT, pediatrics, diagnostic imaging, emergency medicine, epilepsy, stroke care, and a nationally accredited Sleep Disorders Center.

**THERESA
GOING**
BNB Bank



Theresa Going is vice president and commercial real estate (CRE) private banker at BNB Bank. Going focuses on supporting and building on CRE initiatives, while developing and growing customer deposit and cash management portfolios. Most recently, she has successfully expanded the 1031 Exchange business for the bank.

"I have been very interested in how 1031 tax-deferred exchanges programs provide tremendous tax savings by allowing owners of real property to defer the capital gains normally due upon the sale of their property," Going said.

"Connecting customers seeking 1031 Exchange with seasoned qualified intermediaries has been one of my focuses," she noted. "I have successfully worked with clients throughout the entire process making sure all of bases are covered before closing. I am also a dedicated private banker, which allows me to enhance and streamline the banking experience for this vital component of the business operation."

"My team and I recognize that not only does the qualified intermediary industry require customized banking ser-

vices, but each individual firm operates differently from the next, thus requiring a truly tailored banking platform that complies with all of the unique laws within IRC-1031," Going said.

Prior to taking on the role of private banker, Going served over 10 years as the branch manager of the BNB Melville North. Going was instrumental in the opening of the branch, and under her leadership the Melville branch earned the distinction of Melville's Business of the Year. When BNB consolidated its two Melville branches to one, Going was given the opportunity to bring her talent to the area of commercial real estate. She has already provided significant deposits and developed a strong 1031 Network, positioning BNB to work with the growing number of businesses seeking investment financing.

Going serves the community in various capacities, including her role as a board member of the Moxxie Mentoring Foundation Inc.; president of the Melville Rotary; and committee member of the American Heart Association Go Red Luncheon.

Established in 1910, BNB Bank, with assets of approximately \$4.4 billion, operates 38 retail branch locations serving Long Island and the greater New York metropolitan area. In addition, the bank operates one loan production office in Manhattan. Through its branch network and its electronic delivery channels, BNB Bank provides deposit and loan products and financial services to local businesses, consumers and municipalities. Title insurance services are offered through BNB Bank's wholly owned subsidiary, Bridge Abstract. Bridge Financial Services, Inc. offers financial planning and investment consultation.

**KAREN L.
GOLDBERG**
EisnerAmper LLP



Karen L. Goldberg is a principal in the Private Wealth Advisory Group of the accounting firm EisnerAmper LLP. For more than 25 years, Goldberg has specialized in estate planning for closely held business owners, senior corporate executives and other high net worth individuals. Her expertise extends to U.S. gift, estate, and income taxation as well as how that applies to non-U.S. citizens.

Goldberg also manages a sophisticated tax compliance practice that includes the preparation of U.S. gift, estate, and income tax returns, and implementation of tax minimization strategies.

The enactment of the Tax Cuts and Jobs Act of 2017 has been keeping Goldberg busy this year.

"I have been meeting with clients to discuss its impact and opportunities with respect to their estate plans," she said. "Clients have been asking how to optimize the use of their newly increased federal estate/gift tax exclusion — \$11.18 million,

We've got a
Patent
— on —
Experience®

**Over 21,000
patents granted**

**Over 21,000
trademarks
obtained**

**Over 50 years
of experience**

- Our expertise extends to all areas of technology
- We represent everyone from individuals to multinational corporations
- We serve clients with distinction in both foreign and domestic intellectual property law
- We help clients identify emerging technologies and ideas

For more information, call us today at
516.365.9802
or fax us at 516.365.9805
or e-mail us at law@collardroe.com

Collard & Roe, P.C.
PATENT, TRADEMARK COPYRIGHT ATTORNEYS

1077 Northern Blvd., Roslyn, NY 11576
www.collardroe.com



WHO'SWHO

Women in Professional Services

or \$22.36 per couple in 2018 — and whether they need their current level of life insurance protection.”

“This planning has included minimizing their exposure to New York estate tax, considering the New York estate tax exclusion remains at \$5 million+ and disappears once an estate exceeds that amount by 5 percent,” Goldberg noted.

Goldberg is a frequent lecturer on trust and estate topics at professional conferences, including those sponsored by the American Institute of Certified Public Accountants, local CPA societies and the United Jewish Appeal. She is also a past president of the Estate Planning Council of New York City.

Goldberg is a member of the New York, Massachusetts and District of Columbia Bars.

Marks Paneth LLP is a premier accounting firm with origins dating back to 1907. With a team of nearly 700 professionals, the firm provides a full range of audit, accounting, tax and consulting services, with specialties in international tax, forensic accounting, litigation support, family office and financial advisory services. Marks Paneth professionals deliver expert knowledge in a wide range of industries, including real estate, hospitality and restaurants; nonprofit, government and healthcare; manufacturing, wholesale and distribution; theater, media and entertainment; high-net-worth; and financial and

professional services.

Headquartered in New York City, with offices in major markets throughout the East Coast, Marks Paneth is ranked by Accounting Today among the 50 largest accounting firms in the nation and the top 10 in the Mid-Atlantic Region.

NINA GOLDSZTEJN,
ED.D, RNC,
NEA-BC
*Huntington
Hospital*



Nina Goldsztejn, Ed.D., RNC, NEA-BC is vice president for quality at Huntington Hospital in Huntington, which is a member of Northwell Health. Goldsztejn provides leadership to organization-wide efforts of performance improvement. Her goal is to ensure that the delivery of patient care is safe, timely, efficient, efficacious and patient oriented, utilizing evidence-based practices that provide a level of care designed to meet the needs, preferences and values of patients and their families.

Goldsztejn ensures that the organization meets or exceeds all federal, state and local regulatory standards, as well adherence to Huntington Hospital and Northwell Health policy to

meet those standards.

Goldsztejn also oversees and facilitates the quality assurance committees for medicine, surgery, nursing, and the emergency department and makes certain their performance improvement initiatives both retrospective and pro-active are hard wired.

Management of opioid addicted patients has been a focus of virtually every department and service line at Huntington Hospital with continued focus in 2018 as the crisis reaches epidemic proportions,” Goldsztejn said.

“Some of the initiatives we’re working on at Huntington include improving access to treatment and recovery services; advancing better practices for pain management through improved protocols; safe, effective, non-addictive strategies to manage chronic pain; and improved overdose prevention and reversal interventions to save lives and support recovery,” she noted.

Goldsztejn began her career at Huntington Hospital in 2001 as nurse manager for the labor and delivery department and as assistant director for nursing quality and risk management and was named vice president for quality in 2013.

Presented with the president’s award for executive sponsorship in the team category for the Magnet writing team, Goldsztejn worked directly with Huntington Hospital nurses, physicians, and ancillary staff to help the hospital achieve its

past and present Magnet designations.

Established in 1916, Huntington Hospital is a full-service, 408-bed, not-for-profit hospital serving the residents of Suffolk County. Part of Northwell Health, Huntington Hospital has achieved nursing’s highest honor — Magnet® designation — for the fourth time in a row. For the last two years, Huntington Hospital has been ranked among the top hospitals in New York State and the metropolitan area by U.S. News & World Report.

The hospital provides a full range of inpatient, outpatient and specialized healthcare services, and strives to improve the health and quality of life for the people and communities it serves by providing world-class service and patient-centered care. The hospital serves as a clinical campus for the Donald and Barbara Zucker School of Medicine at Hofstra/Northwell.

MELISSA GONZALEZ,
CPA, AEP®
Mazars USA LLP



Melissa Gonzalez, CPA, AEP® is senior tax manager at Mazars USA LLP in Woodbury. Gonzales is a

*Congratulations to all the
2018 Who's Who Women
in Professional Services*

Special Congratulations to
Mary Allen

*First Senior Vice President and Director of Employee Relations,
New York Community Bancorp, Inc.*



New York Community Bank • Member FDIC and its Divisions -
Queens County Savings Bank • Roslyn Savings Bank • Richmond County Savings Bank
Roosevelt Savings Bank • Garden State Community Bank • Ohio Savings Bank • AmTrust Bank
New York Commercial Bank • Member FDIC
and its Atlantic Bank Division

WHO'S WHO

Women in Professional Services

member of the firm's Private Client Service Department and runs the Trust & Estate's Group for the Long Island office. With has 20 years of public accounting experience, Gonzalez oversees the fiduciary, estate and gift tax returns for the office and delivers personal tax and estate planning, as well as compliance services, to high-net-worth individuals.

Gonzalez has been focused on educating women to take control of their finances. "Specifically, reviewing and understanding their tax return and estate plan," Gonzalez said. "It's surprising how many women have never reviewed their tax returns or even know what their estate plan looks like. In the unfortunate instance of divorce or loss of a spouse, many women are unaware of the state of their finances."

"My goal is to increase financial literacy among women," Gonzalez said.

Gonzalez was awarded the Accredited Estate Planner (AEP®) designation by the National Association of Estate Planners & Councils. She is vice president of the board of the Estate Planning Council of Nassau County; and is a member of the Estate Planning Committee for the New York State Society of Certified Public Accountants.

As a member of the Moxxie Mentoring Foundation, which supports the career advancement and leadership development of young women, Gonzalez received the Purple Pump Award for outstanding mentoring. As a two-time Hodgkin's Lymphoma survivor, she is very active with the Leukemia and Lymphoma Society.

Mazars USA LLP is an accounting, tax and consulting firm with significant national presence in strategic U.S. geographies. Since 1921, its professionals have leveraged technical industry expertise to develop customized solutions for clients, create value, with a goal to optimize their performance. Mazars USA LLP offers an array of industry specialists providing services to growth-oriented enterprises and individuals.

As the independent U.S. member firm of Mazars Group, Mazars USA LLP delivers access to the expertise of 20,000 professionals in 86 countries.

ALEXANDRA HALSEY- STORCH

*Twomey, Latham,
Shea, Kelley, Dubin
& Quartararo LLP*



Alexandra Halsey-Storch is an associate at the law firm of Twomey, Latham, Shea, Kelley, Dubin & Quartararo LLP (Twomey Latham) in Riverhead.

Halsey-Storch has a general practice with a concentration in all aspects of matrimonial and family law including divorce, child custody, support and family offense proceedings, as well as the preparation and negotiation of pre-nuptial and post-nuptial agreements. Halsey-Storch's

other areas of practice include real estate transactions, land use and zoning matters, and civil and estate litigation.

Halsey-Storch is dedicated to providing pro-bono representation, and works with, among other organizations, the Retreat, Inc., a not-for-profit domestic violence center in East Hampton, providing representation to victims of domestic violence in matrimonial and family law matters.

Halsey-Storch enjoys helping individuals and businesses with their legal needs and has a particular passion for all aspects of matrimonial and family law, including drafting and negotiating prenuptial agreements, negotiating, and when necessary, litigating issues of custody and visitation, spousal and child support, and equitable distribution.

"Often these situations are emotionally charged, especially when children are involved," Halsey-Storch noted.

Halsey-Storch works to understand each client's situation and stays alert to needs and sensitivities. While offering sound legal advice, she works to move matters forward with an eye on closure and helping clients begin a new chapter in their lives.

Halsey-Storch is admitted to practice law in the State of New York. She is a member of the board of trustees of Rogers Memorial Library; member of the board of directors of New Hope Rising; and the Suffolk County Bar Association, New York State Bar Association and Matrimonial Bar Association of Suffolk County.

Established in 1973, Twomey Latham has grown to be one of the largest law firms in eastern Suffolk County, New York. For more than 45 years, the firm has provided counsel to individuals, businesses and government in a range of practice areas including arts & entertainment law; business & corporate law; civil litigation; elder law; employment and labor counseling and litigation; environmental law; estate administration; estate litigation; farmland preservation; immigration law; insurance law; intellectual property law; land use & zoning; matrimonial & family law; municipal law; non-profit law; personal injury; real estate; special needs planning; tax grievances/certiorari; taxation; trademarks and copyrights; and wills, trusts & estates.

The firm has earned Martindale-Hubbell Law Directory's highest rating for legal competence and professional reliability.

KATE HEPTIG

Rivkin Radler LLP



A partner in Rivkin Radler LLP's Corporate, Health Services and Tax Practice Groups, Kate Heptig focuses on transactional tax law and ex-

LEWIS JOHS

Lewis Johs Avallone Aviles, LLP

Counsellors at Law

CONGRATULATES



DEBORAH AVILES

PARNTER

and all of the
2018 LIBN

WHO'S WHO IN WOMEN IN PROFESSIONAL SERVICES

LONG ISLAND
NEW YORK CITY
(631) 755-0101

www.lewisjohs.com



WHO'SWHO

Women in Professional Services

ecutive compensation; general business law relating to corporations, LLCs and partnerships; and ERISA/employee benefits matters.

Heptig advises individuals and businesses across a broad range of industries in each of these substantive areas of law in connection with corporate operations and reorganizations; sales and acquisitions of businesses; tax-free spin-offs; executive compensation arrangements; qualified and non-qualified pension and deferred compensation plans; equity, incentive compensation, change in control and severance arrangements; business succession planning; executive employment agreements; shareholder and operating agreements; joint ventures; corporate governance; commercial contracts; and audit and other tax controversy matters.

Heptig also advises physicians, group medical practices and other types of health services clients on transactional matters from a tax, regulatory and corporate governance standpoint, and she has experience establishing MSO corporate structures for licensed professionals in a variety of fields, in addition to preparing such entities for investments through private placements. Heptig also represents not-for-profit corporations.

This year has been all about tax reform, noted Heptig.

"The adoption of the Tax Cuts and Jobs Act at the end of 2017 turned a lot of what we, as tax professionals, take as dictum and turned it on its head," she said. "There's been very little guidance on really critical changes to the Code, like the application of the pass-through deduction, and our clients are really looking for us to help them navigate this new world in the ways most effective for them and their businesses."

Heptig was selected to the SuperLawyers New York Metro Rising Stars 2014 (Business/Corporate) and 2015 (Tax) lists. Among her many affiliations Heptig is on the Young Professionals Committee of the Long Island Association.

Through five offices and 180 lawyers, Rivkin Radler serves individuals, middle-market companies and large corporations. For clients who prefer to speak their native language, we can communicate in French, French and Haitian Creole, Greek, Hebrew, Hindi, Italian, Korean, Punjabi, Polish, Russian, Spanish, Tagalog and Urdu.

Rivkin Radler's attorneys are leaders in legal, business and political arenas. Many of our attorneys have received Martindale Hubbell's AV Preeminent® ranking. Its attorneys have been recognized as leaders by peer review programs, including Best Lawyers/U.S. News & World Report and Super Lawyers. Rivkin Radler has been named among the Top 100 Private Companies on Long Island by Newsday and is consistently ranked among the New York Law Journal's 100 Largest Law Firms in New York. The firm also received Advancement for Commerce, Industry and Technology's Commitment to Excellence and Leadership Award.

SHANTEY HILL-HANNA, M.S., ATC
St. Joseph's College



Shantey Hill-Hanna, M.S., ATC is vice president for athletics and campus services at St. Joseph's College (SJC). Hill-Hanna, who is also chair of physical education at SJC, focuses on ensuring that student-athletes across both the Brooklyn and Patchogue campus of St. Joseph's College have a quality athletic experience while also ensuring that the goods and services provided to the college by vendors and third-party organizations meet the needs and standards for all campus

constituent groups.

She provides direction for the athletics senior management team who help oversee a 24.8-acre state-of-the-art outdoor athletic facility in Patchogue and a 40,000-sq.-ft. recreational facility that is LEED Gold Certified in Brooklyn.

Since joining the college in 2013, Hill- has helped SJC develop policy and procedure manuals; facilities have been renovated; sports programs added; and corporate sponsorships secured to assist in supporting the experiential learning needs of over 400 student-athletes.

Under her leadership, the sport teams are active in the community, have taken a combined 14 trips to the NCAA Tournament and boast an overall department GPA well over a 3.0.

As a liaison between the college and its vendors, Hill-Hanna utilizes innovative and creative approaches to assist in obtaining outcomes satisfac-

tory for all. Working closely with the president and chief financial officer to ensure that campus service areas — such as SJC's dining facilities remain fiscally stable while still providing quality service — she also remains responsible for revenue generation through use of campus facilities by outside vendor groups, which have doubled under Hill-Hanna's watch.

Hill-Hanna serves as the chair of the National Collegiate Athletic Association (NCAA) Division III Management Council and sits on the Board of Governors, which is the highest governance body within the NCAA.

A Certified Athletic Trainer, Hill-Hanna is an experienced facilitator and speaker, as well as a published author with written works appearing in Nike Coach of the Year Clinic Football Manual and Athletic Management magazine.

Founded in 1916, SJC is a four-year, comprehensive, coeducational,

INCLUSION
AND DIVERSITY

OUR COLLABORATION MATTERS

WHEN YOU NEED DIVERSE PERSPECTIVES TO SOLVE BIG PROBLEMS

The world is a complex place. In order to find the right solution for you, we need the best ideas. And that only comes from having a workforce of diverse, energized and empowered individuals who work in an environment that encourages innovative thinking. Our mission is to excel as a leading multi-cultural law firm that reflects and builds upon the growing diversity of the communities and clients we serve. True transformation comes from considering many perspectives and building strength through trusted collaboration. Together, we can get the job done.



HARRIS BEACH PLLC
ATTORNEYS AT LAW
Discover True Engagement®

Long Island Point of Contact
Thomas J. Garry | 516.880.8484

Image used is stock photography.

Learn more about our commitment to inclusion and diversity at harrisbeach.com/inclusion-and-diversity

ALBANY BUFFALO ITHACA **MELVILLE** NEW YORK CITY ROCHESTER SARATOGA SPRINGS
SYRACUSE **UNIONDALE** WHITE PLAINS NEW HAVEN, CT NEWARK, NJ

95 Broadhollow Road, Melville, NY 11747 | 333 Earle Ovington Blvd, Suite 901, Uniondale, NY 11553

WHO'S WHO

Women in Professional Services

private institution in the liberal arts tradition with campuses in Brooklyn and Patchogue, and an online campus, SJC Online. With a combined enrollment of more than 5,000 students, the College enjoys a student-to-faculty ratio of 13:1, which provides individual attention in an open, supportive atmosphere.

SJC offers undergraduate and graduate degrees in more than 50 majors. In addition, special course offerings, advanced certificates and pre-professional programs are available, as well as many dual-degree programs which allow students to earn both a bachelor's and master's degree in a condensed period of time.



Lisa Holland is the retail market president for TD Bank's Suburban New York market, which is comprised of Long Island, Westchester and the Lower Hudson Valley. Holland is responsible for all retail banking activities for a 97-branch network, including business development, service delivery, customer & employee experience, operations, new branch development and training.

Holland has more than 25 years of banking experience, which started at EAB/Citibank where she held numerous positions. She joined TD Bank (formerly Commerce Bank) in 2002 and has played an instrumental role in driving the growth of the Long Island market by building out strong retail teams and creating an outstanding sales and service culture.

Under Holland's leadership and strategic partnerships with her business partners, the Suburban NY Market continues to be a high performing growth market for the bank with strong growth results in deposits, wealth, commercial, consumer and small business loans.

Holland is concentrating on assuring TD Bank's services and commitment reach all individuals within the diverse communities the bank serves.

"I have focused on advancing opportunities to expand accessibility of banking resources to individuals with diverse abilities and have also sought working partnerships to advance the goals of The Ready Commitment, a multi-year community giving platform TD Bank launched in early 2018," Holland said. "There are four drivers supporting the Ready Commitment's \$1 billion CDN (\$775,000,000 USD) investment targeted for 2030: Financial Security, Connected Communities, Better Health and Vibrant Planet. This new platform greatly expands on TD's longstanding commitment to improving the neighborhoods where we live and work across the diverse communities we serve."

"This commitment is made possible through the great work of each of our

team members," Holland noted.

Holland is a member of several bank wide committees, including the Employee Experience Committee. She also works closely with many local not-for-profit organizations including, Special Olympics, Island Harvest, LGBT, American Heart Association, United Way and for many local environmental causes.

TD Bank is among the largest banks in the U.S., providing more than 9 million customers with a full range of retail, small business and commercial banking products and services at more than 1,200 locations throughout the Northeast, Mid-Atlantic, Metro D.C., the Carolinas and Florida. In addition, TD Bank and its subsidiaries offer customized private banking and wealth management services through TD Wealth®, and vehicle financing and dealer commercial services through TD Auto Finance. TD Bank, which is a member of TD Bank Group and a subsidiary of The Toronto-Dominion Bank of Toronto, Canada, is headquartered in Cherry Hill, NJ.



Savina Indelicato is vice president of Valley National Bank and territory sales manager for the Suffolk County region. Indelicato's career spans over 25 years in the financial industry as a valued advisor providing solutions with unmatched convenience and an exceptional client experience.

Indelicato is a top performer who "leads by example" motivating her team to go above and beyond to make clients' financial dreams become a reality.

"The focus for 2018 is to continue to develop strong relationships in the community by empowering businesses to reach new heights of success," Indelicato said.

Indelicato is a board member of the Hauppauge Rotary Club, Suffolk Bar Association, Hauppauge Industrial Association and the Disabled Vets Society. She provides financial literacy through Junior Achievement at various school districts throughout Long Island.

Valley National Bancorp is a regional bank holding company headquartered in Wayne, NJ with over \$29 billion in assets. Its principal subsidiary, Valley National Bank, operates over 230 branch locations in northern and central New Jersey, the New York City boroughs of Manhattan, Brooklyn, Queens and Long Island, Florida and Alabama.

Valley National Bank is one of the largest commercial banks headquartered in New Jersey and is committed to providing the most convenient service, the latest in product innovations and an experienced and knowledgeable staff with a high priority on friendly customer service.



Ellen F. Kessler is a partner at Ruskin Moscou Faltischek, P.C. and a member of the firm's Health Law Department, bringing special expertise as both an experienced attorney and a registered nurse.

Kessler concentrates her practice in the area of health law. She assists healthcare clients in structuring business relationships and transactions to comply with federal and state laws including self-referral, anti-kickback and professional misconduct statutes. She regularly counsels health care clients on mergers, acquisitions and establishment of professional practices, employment and professional service relationships, establishment of management service organizations and their relationships with health care providers, establishment and transfers of Article 28 and Article 36 facilities, HIPAA compliance, and regulatory and professional licensure issues under state and federal law.

She also advises clients on employment agreements, shareholder and partnership agreements, management agreements, and professional service agreements. Her health care clients have included hospitals, long-term care facilities, home health care agencies, management services organizations, independent practice associations, physicians, dentists, chiropractors, podiatrists, physical therapists, nurses and other health care practitioners.

One trend that has continued to be an area of focus in health care is the acquisition of physician practices by hospitals, Kessler said.

"This reflects the economic and administrative challenges that physicians in private practice face, which motivates them to seek economic stability in employment agreements with hospitals. These arrangements typically benefit both parties," she said. "In the past, physicians were often able to negotiate advantageous agreements with hospitals. As the initial contracts between the physicians and the hospitals reach their expiration dates however, it remains to be seen whether renewal arrangements will continue to provide advantageous positions for physicians in the future."

Kessler was recently selected to the 2015 New York Super Lawyers list. She has authored chapters for the Legal Manual for New York Physicians, a collaboration between the New York State Bar Association and the Medical Society of the State of New York.

Prior to her career in law, she had a distinguished career in nursing and nursing education at various New York hospitals.

For 50 years, Ruskin Moscou Faltischek P.C., headquartered in Uniondale, has built a reputation as one of the region's leading providers of in-

novative legal services. Its attorneys are practical, experienced advocates who measure their success by their clients' success. Cornerstone groups in all major practice areas of the law are represented at the firm, including corporate and securities, financial services, commercial litigation, intellectual property, health care, real estate, employment, not-for-profit, cybersecurity and data privacy, energy, and trusts and estates. Clients include large and mid-sized corporations, privately held businesses, institutions and individuals.



Christine Kinhackl, CPA is a senior tax manager at BDO, USA, LLP and works out of the firm's Melville office. Kinhackl is a certified public accountant with over 20 years of accounting and tax compliance experience in the public and private accounting sectors.

Kinhackl's professional background includes engagements in private and publicly held companies of diverse sizes. She works primarily in the industries of manufacturing and distribution, retail and consumer products, professional service providers and real estate.

Kinhackl's experience includes the areas of corporate taxation, pass-through entities and ASC-740 Accounting for Income Taxes.

With a major tax overhaul starting off the New Year, 2018 has been a very challenging and exciting time for tax professionals, Kinhackl said.

"Our clients are depending on us to advise them on the impact of these changes within the context of their overall financial and business goals," she said.

"I have been very fortunate in that our firm took a collaborative approach, utilizing experts in each tax area to quickly disseminate and educate our professionals on the new rules and their tax implications," Kinhackl noted. "This type of support has allowed me to help my clients proactively plan rather than react to these changes."

Kinhackl is a member of the American Institute of Certified Public Accountants and the New York State Society of Certified Public Accountants.

BDO is the brand name for BDO USA, LLP, a U.S. professional services firm providing assurance, tax, and advisory services to a wide range of publicly traded and privately held companies. For more than 100 years, BDO has provided quality service through the active involvement of experienced and committed professionals. The firm serves clients through more than 60 offices and over 550 independent alliance firm locations nationwide. As an independent member firm of BDO International Limited, BDO serves multi-national clients through a global network of 73,800 people working out of 1,500 offices across 162 countries.

**JENNIFER
MAIZEL**
Grassi & Co.


Jennifer Maizel is communications manager at Grassi & Co., an accounting firm in Jericho. Spokesperson for the firm, Maizel promotes the firm's professionals through various media outlets, publications and social media.

Maizel launched her career at Rolling Stone magazine and has done creative work in writing, video production and marketing for companies such as Turner Broadcasting, Millimeter magazine, Arrow Electronics and St. John's University.

Social media and how it relates to audiences has been Maizel's focus in 2018.

"As the content market becomes more saturated, the use of visual and audio applications through social media, over the written-word, has become more necessary," Maizel said.

"Social media is one of the fastest-growing communications tools used to promote businesses and, this year, is the most popular venue used to access the news."

"As each platform caters to differ-

ent audiences, the importance of understanding the need for each, and being able to keep abreast of the constant updates within each, can be consuming, but is imperative."

Dedicated to helping children, Maizel volunteered at an orphanage in Ghana, Africa and wrote and published a memoir of the experience entitled, "When I Looked Up", which is under her maiden name, Jennifer Vacchio.

She contributes her professional skills to nonprofit organizations including Tiny Stars and has sponsored several children in the Philippines through Plan USA. Maizel has also supported education for marginalized women through Women for Women International.

Her video productions have earned her a Silver Telly Award and a Gold Aurora Award. Maizel's PR initiatives have earned her placement in the 2017-2018 Marquis Who's Who in America by the Publications Board.

Grassi & Co. is a premier professional service organization specializing in auditing, tax, technology, and business consulting services. Grassi & Co. has offices in New York City, Long Island, White Plains, NY, and Park Ridge, NJ, as well as internationally through its association with Moore Stephens International.

Grassi & Co. specializes in professional services for the not-for-profit, construction, architecture & engineering, financial services, private eq-

uity, life sciences, manufacturing & distribution, retail, technology, media & telecommunication, transportation, energy & natural resources and healthcare industries, among others.

AMY MARION

Abrams
Fensterman,
Fensterman,
Eisman, Formato,
Ferrara, Wolf &
Carone, LLP



Amy Marion is a litigation partner at Abrams Fensterman, Fensterman, Eisman, Formato, Ferrara, Wolf & Carone, LLP (Abrams Fensterman), a law firm in Lake Success. Marion's experience includes substantive areas of law including civil rights, criminal, municipal, commercial litigation, wrongful death claims, breach of contract, partnership disputes, estate litigation, domestic abuse and environmental issues.

Marion is focused on getting a Prosecutorial Conduct Commission bill passed by New York State legislators in her role as co-chair of the New York State Association of Criminal Defense Lawyer's Legislative Committee.

"Last month, the bill was passed by both the NYS Assembly and the NYS Senate," Marion said.

"In the 358 exonerations national-

ly based on DNA, the true perpetrators of those crimes were detected and known of in 50 percent of the cases," she noted. "Those 155 individuals remained at liberty to commit an additional 150 crimes: 35 murders, 80 rapes and 35 other violent crimes."

In NYS, over 60 percent of 249 wrongful convictions overturned involved "official misconduct" by prosecutors and/or police, according to the National Registry of Exonerations, Marion said.

"Thus, this bill is essential to prevent innocent people from being wrongly prosecuted and incarcerated," Marion said.

Marion began her legal career with the Criminal Defense Division of the NYC Legal Aid Society representing indigent defendants. Her courtroom successes were so notable that she was chosen to be featured on a court television documentary entitled "The Public Defender."

Marion's cases have been featured in The New York Law Journal, The Wall Street Journal, The New York Times, Newsday, The Daily News, and The Associated Press.

She is the incoming president to the Nassau County Criminal Courts Bar Association; a member of the Nassau County Judiciary Committee; counsel to the Committee for a Sustainable Waterfront; and counsel to Sea Cliff Open Government.

Marion has been a New York Metro Super Lawyer for numerous years,


CITRIN COOPERMAN®

Accountants and Advisors

CITRIN COOPERMAN CONGRATULATES PATRICIA A. CUMMINGS

AND ALL OF THE 2018
LIBN WHO'S WHO IN
WOMEN IN PROFESSIONAL
SERVICES

LONG ISLAND 225 Broadhollow Road Suite 401, Melville, NY 11747 | 631.930.5000
NEW YORK CITY 529 Fifth Avenue, New York, NY 10017 | 212.697.1000

CITRINCOOPERMAN.COM


PATRICIA CUMMINGS, CPA

 Co-Managing Partner | Metro New York
pcummings@citrincooperman.com

WHO'S WHO

Women in Professional Services

as well as a Top Women Attorney in Metro New York and Top Attorney in Metro New York.

Abrams Fensterman is one of the largest full service law firms based on Long Island. The firm serves clients throughout the New York metropolitan area from offices in Long Island, Manhattan, Brooklyn, and serve upstate New York from our Rochester office.

The firm is a leader in representing health care providers in all aspects of health care law. In addition the firm has law departments chaired by recognized leaders in their fields in areas such as matrimonial and family law, mental health law, corporate and securities, estate planning and administration, commercial litigation, guardianship law, employment law, real estate law, elder law and white collar criminal defense.



DANA H. MARTI, CPA
Marks Paneth LLP

Dana H. Marti, CPA, is a partner in the Woodbury office of Marks Paneth LLP, a nationally ranked Top 50 tax, accounting and advisory firm. Marti

specializes in income tax planning and consulting services for closely held businesses and high-net-worth individuals, with a concentration in commercial and residential real estate. Prior to joining Marks Paneth, Marti was a partner and tax specialist at Gassman Rebhun & Co., roles she maintained when that firm combined with Marks Paneth in 2000.

Marti has been focusing on the new Tax Cuts and Jobs Act.

"In 2018, I have spent a significant amount of time analyzing the new Tax Cuts and Jobs Act and have been working with my clients closely to educate them on the extensive tax law changes and how they and their businesses will be affected," Marti said. "Despite the uncertainty that still surrounds many of the provisions, I have been developing and recommending tax planning strategies that can save my clients considerable tax dollars."

"Throughout the rest of 2018, I will be monitoring developments and analyzing guidance issued by the IRS to help my clients and staff prepare for the 2018 tax season," she said.

Marks Paneth LLP is a premier accounting firm with origins dating back to 1907. With a team of nearly 700 professionals, the firm provides a full range of audit, accounting, tax and consulting services, with specialties in international tax, forensic accounting, litigation support, family office and financial advisory services. Marks

Paneth professionals deliver expert knowledge in a wide range of industries, including real estate, hospitality and restaurants; nonprofit, government and healthcare; manufacturing, wholesale and distribution; theater, media and entertainment; high-net-worth; and financial and professional services.

Headquartered in New York City, with offices in major markets throughout the East Coast, Marks Paneth is ranked by Accounting Today among the 50 largest accounting firms in the nation and the top 10 in the Mid-Atlantic Region.



JACQUELYN MASCETTI
Herman Katz
Cangemi & Clyne,
LLP

Jacquelyn Mascetti is an associate at the law firm of Herman Katz Cangemi & Clyne, LLP (HKCC) in Melville.

Prior to joining HKCC in 2013, Mascetti gained valuable experience at a boutique firm in Manhattan where she was involved in all phases of complex commercial litigation, insurance coverage issues, corporate investiga-

tions and white-collar and regulatory defense matters. During law school, Mascetti interned for The Hon. Anthony F. Marano, Supreme Court Justice and Administrative Judge of Nassau County.

She is admitted to practice before the courts in New York, New Jersey, and Connecticut.

Mascetti is a member of the New York Bar Association, New York City Bar Association, Nassau County Bar Association, Suffolk County Bar Association, the Long Island Builders Institute and the Columbian Lawyers' Association of Nassau County.

Jacquelyn has published two articles: The Fifth Circuit Clarifies Who May Bring a Violation of the Automatic Stay, ABI Bankruptcy Litigation Committee Newsletter, Vol. 8 No. 1 (Feb. 2011); Going for Broke in the Music Industry: Aligning the Code with the Interests of Recording Artists, Note, 19 Am. Bankr. Inst. L. Rev. 185 (2011).

From its headquarters in Melville, Long Island, Herman Katz Cangemi & Clyne, LLP handles a comparably diverse portfolio of real property tax appeals on Long Island, in Westchester County, and throughout upstate New York. From its offices in midtown Manhattan, HKCC oversees and litigates a wealth of different properties throughout New York City, from major office buildings and hotels, to large retail projects and multifamily residential, to industrial and specialty

Are you ready for tax change?

Congress has passed the most sweeping tax law changes since 1986. These tax changes will impact individuals as well as public and private companies, pass-throughs, and multinational corporations.

The fact is, every year thousands of clients rely on EisnerAmper's experience and knowledge. So, are you ready for tax law changes in 2018 and beyond? We are.

Learn more at
EisnerAmper.com/TAXCHANGE

EISNERAMPER



WHO'S WHO

Women in Professional Services

property.

The firm represents clients at both the administrative and judicial levels throughout New York State, as well as providing additional assistance by overseeing properties throughout the country. The property tax business requires local expertise and experience, and HKCC has spent decades establishing its reputation in New York, and developing relationships nationwide to make sure the right expert is implicated in every jurisdiction. In this regard, HKCC acts as outside property tax counsel for both national and international real estate operations and oversee portfolios across the United States.

LAURA J. MASSARO

Jackson Lewis P.C.



Laura J. Massaro is of counsel in the Melville, Long Island office of Jackson Lewis P.C. Massaro has more than 12 years of experience advising clients with respect to a variety of employment matters. She advises clients regarding the development and implementation of effective employment policies, handbooks, procedures and

contracts. She also advises clients on preventive practices, focusing on how to comply with applicable laws and regulations, avoid workplace disputes, resolve employee relations problems and satisfy legitimate employee expectations.

Massaro has served as in-house corporate counsel to three different organizations and brings a unique perspective on client needs to the Long Island office.

"2018 has been particularly busy due to the many new employment related laws introduced/enacted in both New York State and New York City, including New York State's Paid Family Leave law," Massaro said. "In addition, employers in both New York State and New York City will soon be required to maintain written sexual harassment policies and provide annual sexual harassment training to employees."

"These are just a few examples of the numerous recent modifications to the employment law landscape, which require my immediate attention and consideration," she noted.

Massaro completed two federal judicial clerkships. She clerked for the Staff Attorneys' Office of the United States Court of Appeals for the Second Circuit and she completed a two-year clerkship for the Honorable Arthur D. Spatt in the United States District Court for the Eastern District of New York.

Massaro is admitted to practice in

New York State and before the U.S. District Court, Eastern District of New York.

Jackson Lewis P.C. is a law firm with more than 850 attorneys in major cities nationwide serving clients across a wide range of practices and industries. Having built its reputation on providing premier workplace law representation to management, the firm has grown to include leading practices in the areas of government relations, healthcare and sports law. The firm's commitment to client service, depth of expertise and innovation draws clients to Jackson Lewis for excellent value-driven legal advice.

HAYLEY MAYER, EA

Prager Metis CPAs, LLC



Hayley Mayer, EA is director of lifestyle management at Prager Metis CPAs, LLC, which is a member of Prager Metis International. Mayer, who works out of the firm's Woodbury office, oversees the various services provided to high net-worth individuals whose lifestyles require attentive care ranging from bill payments, insurance needs, etc. She works with the clients'

team of advisors to ensure that they have the correct financial information to make well-informed decisions.

Mayer ensures that each lifestyle management client is run like a small business; monthly financial statements are produced to inform the client of what took place the previous month as well as what the investment accounts reflect at the end of the month.

Mayer also manages the family office aspects, which include keeping track of all income and payments, made of the children.

Mayer has more than 15 years of experience in the accounting profession. She joined Prager Metis' predecessor, Mayer CPAs, in 2002 after working as a controller in apparel. She became an enrolled agent (EA), a federally-authorized tax practitioner who has technical expertise in the field of taxation and who is empowered by the U.S. Department of the Treasury to represent taxpayers before all administrative levels-examination, collection, and appeals-of the Internal Revenue Service.

Mayer's is on the Walk Committee of the Alzheimer's Association, Long Island Chapter. She is also a past treasurer of IU Alumni Association, Metro NY Chapter.

Prager Metis is a Top 10 International firm and Top 100 US accounting firm, with over 70 partners and principals, more than 400 team members, and 13 offices worldwide includ-



and the
Understanding the Value of the Family Business



BERDON ACCOUNTANTS AND ADVISORS™ **> LISTEN. SOLVE. DO.™**

LONG ISLAND 516.931.3100 | MANHATTAN 212.832.0400 | BERDONLLP.COM | BLOGS.BERDONLLP.COM |

WHO'S WHO

Women in Professional Services

ing New York, New Jersey, Los Angeles, Miami, London and India. Prager Metis offers its clients expert advice that protects and grows the value of their world — whether that world is local or extends across international markets.

JIL MAZER-MARINO

Meyer, Suozzi, English & Klein, P.C.



Jil Mazer-Marino is a member of Meyer, Suozzi, English & Klein, P.C. in Garden City. She was named a member in 2011 having joined the firm as Of Counsel to the firm's Bankruptcy & Business Reorganization and Corporate Finance law practice in 2008.

Mazer-Marino practices in the area of bankruptcy and creditors' rights and has extensive experience representing debtors, creditors' committees, and secured and unsecured creditors in large and complex chapter 11 bankruptcy cases.

Mazer-Marino represents chapter 7 and chapter 11 trustees, chapter 11 debtors in possession, and plan administrators in all aspects of bankruptcy case administration. Additionally, she

represents banks, indenture trustees, factors and other lenders in connection with debtor in possession financing, out of court debt restructuring, and debt collection.

As a commercial bankruptcy and restructuring attorney, Mazer-Marino counsels businesses in financial distress. "I also represent banks, finance companies, landlords and other creditors in and out of the bankruptcy arena," she said. "In addition, I am on the panel of Chapter 7 Trustees for the Southern District of New York. I recently began counseling businesses in the booming Cannabis industry."

"Although legal in New York for medical use — and expected to be legalized for adult recreational use — cannabis remains illegal on a federal level," she noted. "This schizophrenic and changing legal landscape has created tremendous opportunity but also perilous legal risks for entrepreneurs."

Mazer-Marino was recognized as a New York Super Lawyer from 2013-2017.

She is admitted to practice in New York State and before the U.S. District Court, Southern and Eastern Districts of New York.

Prior to joining Meyer, Suozzi, Mazer-Marino was a partner at the bankruptcy boutique firm of Rosen Slome Marder, LLP. From 1990 through 1991, she served as a law clerk to Hon. Conrad B. Duberstein, former Chief United States Bankruptcy Judge for the Eastern District of New York,

after which she practiced in the business reorganization and restructuring department of Willkie Farr & Gallagher LLP in New York City.

Founded in 1960, Meyer, Suozzi, English & Klein, P.C. is a distinguished provider of legal services, with a reputation for integrity, insight and excellent client service. With offices in Albany, Garden City, Manhattan and Washington, D.C., the firm provides legal advice in 18 practice areas. The firm's attorneys are known for their commitment to their clients, community, public affairs and diversity.

ALI MCCABE, CPA

Albrecht, Viggiano, Zureck & Company, P.C. (AVZ)



Ali McCabe, CPA joined Albrecht, Viggiano, Zureck & Company, P.C. (AVZ) in Hauppauge in 2016 and was promoted to supervisor in 2017. With more than eight years of experience, McCabe provides accounting, auditing, and governmental services to a variety of clients including governmental entities, not-for-profits, manufacturers and retail businesses.

In 2018, it seems that there are countless issues — and opportunities

— to keep abreast of in the accounting profession, McCabe said.

"Client responsibilities, improving efficiencies and staying up-to-date on the latest pronouncements are always on the forefront of our minds; however, new issues such as artificial intelligence and the future of the accounting profession are equally as pressing," she said.

"In addition to client responsibilities, one of my focuses in 2018 has been on implementing meaningful change within the firm in order to meet the needs of today's employee," McCabe noted. "Flexible work arrangements, increased communication from all levels of the organization, opportunities to contribute to the community, and perks such as 'summer Fridays' and options for increased vacation time are just a few of the changes that accounting firms can make in order to keep up with the needs of today's workforce."

McCabe began her career in accounting in 2009 with a small accounting firm in Suffolk County.

McCabe is a member of the American Institute of Certified Public Accountants and the New York State Society of CPAs.

AVZ is one of the largest certified public accounting firms on Long Island providing a wide range of financial, accounting, auditing, tax and consulting services to a variety of businesses and industries. AVZ serves a myriad of clients primarily on Long

NO (OVER) TAXATION WITHOUT THE RIGHT REPRESENTATION

Real estate taxes are a cost of doing business which can be the difference between a profit or a loss. Hiring experienced counsel, capable of both negotiating extremely favorable resolutions and also litigating these matters is absolutely critical in keeping taxes as low as possible. The partners of Herman Katz Cangemi & Clyne have spent decades developing reputations for vigilant advocacy throughout the State, including New York City, Long Island, the Hudson Valley, the Capital Region and western New York. Our clients benefit from our superior representation to consistently ensure that they pay only a fair and equitable share of the collective tax burden. This reputation transcends New York State, as clients rely on us to manage their national real estate tax portfolios.

INDUSTRIAL • OFFICE • HOTELS • SHOPPING CENTERS
DEPARTMENT STORES • SELF-STORAGE FACILITIES
MULTI-FAMILY & APARTMENT COMPLEXES
GOLF & COUNTRY CLUBS

www.hkcclaw.com

HKC&C
Herman Katz Cangemi & Clyne

LONG ISLAND OFFICE | 538 Broadhollow Road, Suite 307 • Melville, NY 11747 • P: 631.501.5011 • F: 631.501.5012
NEW YORK OFFICE | 360 Lexington Avenue, Suite 1502 • New York, NY 10017 • P: 212.953.5000 • F: 212.953.5001

WHO'S WHO

Women in Professional Services

Island — and has been doing so for more than 60 years.

The firm considers itself a partner in growth for privately held businesses, not-for-profit organizations and government agencies. AVZ is also an independent member of BKR International, a leading global association of independent accounting and business advisory firms representing the expertise of more than 160 member firms with over 500 offices in over 80 countries around the world.



HEATHER F. MCMULLEN, MD
Syosset Hospital

Heather F. McMullen, MD is director of bariatric surgery and director of surgery at Syosset Hospital in Syosset, which is a member of Northwell Health.

As director of bariatric surgery, Dr. McMullen attributes the success of her practice to the collaborative nature of the hospital's program, which includes consultation and follow-up care with a nutritionist, psychologist and clinical staff.

"Patients are encouraged to attend pre and post-surgical education classes and support groups," she said. "This patient-centered experience develops motivated and knowledgeable patients who are equipped to achieve long term successful outcomes following their weight loss surgery."

"Bariatric surgical procedures control the hunger associated with morbid obesity," Dr. McMullen noted. "Obesity puts these patients at risk for medical conditions including Type 2 Diabetes, hypertension, heart disease, stroke, sleep apnea, respiratory problems, cancer, osteoarthritis and joint problems."

"Our program at Syosset Hospital has been designated an MBSAQIP Accredited Center by the Metabolic and Bariatric Surgery Accreditation and Quality Improvement Program," Dr. McMullen said.

Dr. McMullen is also an assistant professor of surgery at Zucker School of Medicine. Among her certifications include the American Board of General Surgery and MBSAQIP Accreditation.

She is a member of the New York Surgical Society and American College of Surgeons.

Syosset Hospital provides medical care and advanced technical services performed by skilled, compassionate professionals who are trained in the latest medical procedures. The 136-bed hospital has a well-equipped special care unit, a psychiatric wing and an emergency department that includes an eight-bed trauma unit. In addition, the Abdullah Mishrick, MD state-of-the-art surgical suite performs advanced laparoscopic and general surgery procedures.

Syosset Hospital is also home to the Center of Excellence for Bariatric Surgery as well as for orthopedics. Membership in local service organiza-

tions, joint activities with schools and other community organizations, sponsorship of health fairs and screenings, and patient education programs make Syosset Hospital a vital institution that serves its community in the best possible way. The hospital is also affiliated with the Donald and Barbara Zucker School of Medicine at Hofstra/Northwell.



PATRICIA MEZEUL
Flushing Bank

Patricia Mezeul is executive vice president, director of government banking at Flushing Bank. Mezeul is responsible for establishing the bank's government banking presence in the industry and developing the growth of this area.

Flushing Bank provides a myriad of services and individualized concentration for all its customers, Mezeul said.

"Flushing Bank offers the products, services and conveniences associated with large commercial banks combined with the personalized, relationship-based attention you would expect from a community bank," she noted. "At the heart of our community-based approach to banking relationships is the philosophy that we are, 'Small enough to know you. Large enough to help you.' For the government banking team, that means focusing exclusively on serving the unique needs of public entities, municipalities, and school districts across the New York area."

"Although we may not have as many branches as some of our competitors, we offer online cash management services that allow our customers to access and conduct business in their accounts remotely, making a branch visit unnecessary," Mezeul said.

Mezeul has 30 years of experience in the banking industry. Prior to joining Flushing Bank, she worked for Commerce Bank as the government banking team leader for Long Island. Her banking career started with NatWest/Fleet Bank in Melville where she held various management positions.

Among her many affiliations, Mezeul is a board member of the Queens Chamber of Commerce and Mental Health Association of Nassau County; member of the New York Bankers Association, serving as chairperson of its Municipal Finance Committee; member of the Nassau Association of School Business Officials, Suffolk Association of School Business Officials and the Long Island Village/Clerk Treasurers Association; and serves on the Board NYS Government Finance Officers' Association.

Flushing Financial Corporation is the holding company for Flushing Bank, a New York State-chartered commercial bank insured by the Federal Deposit Insurance Corporation. The bank serves consumers, businesses, professionals, corporate clients, and public entities by offering a full

complement of deposit, loan, equipment finance, and cash management services through its banking offices located in Queens, Brooklyn, Manhattan and Long Island.

As a leader in real estate lending, the bank's experienced lending team creates mortgage solutions for real estate owners and property managers both within and outside the New York City metropolitan area. The bank also operates an online banking division.



MARY E. MONGIOI
Forchelli Deegan Terrana LLP

Mary E. Mongioi is a partner at Forchelli Deegan Terrana LLP in Uniondale. Mongioi concentrates her practice in the tax, trusts and estates department, where she offers clients years of experience in the handling of litigated estate matters as well as in civil litigation, appellate practice, and real estate.

Mongioi also has significant experience handling the foreclosure of mortgages and other liens held by major financial institutions, mid-sized and small investors, and commercial enterprises, on both residential and commercial real property. She has represented several financial institutions in connection with loan transactions and drafting complex commercial loan documents for the restructure of non-performing loans, with emphasis on co-operative loans.

Mongioi is also co-chair of the firm's Veterinary Practice Group.

"I am fortunate to co-chair our firm's Veterinary Practice Group," Mongioi said. "Our creative 'team' approach makes available to our veterinary clients, lawyers from our corporate, tax, real estate, zoning and land use and litigation departments. This allows our attorneys to offer comprehensive services to each client and to deliver smart, innovative solutions that assist our clients in achieving and surpassing their goals."

"I have personally focused on growing the firm's brand through active participation at industry conferences and presenting on the topic of the business of veterinary medicine," she said. "I also keep abreast of technological advances on both the medical and business side of the industry. Those advances are driving industry growth and changing the manner in which veterinarians deliver services to their clients."

Mongioi joined the firm as an associate in 2004 and became partner in 2015. Mongioi has authored various articles for the New York Law Journal on varying estate litigation issues.

Founded in 1976, Forchelli Deegan Terrana LLP is one of Long Island's most acclaimed and distinguished law firms. Forchelli Deegan Terrana employs more than 60 attorneys who provide counsel to a broad range of clients, including national, regional and local businesses, major real estate developers and organizations, banks,

insurance companies, municipalities, educational institutions, contractors, architects/engineers and individuals.



EVELYN MORALES, PAC, MHA
Mercy Medical Center

Evelyn Morales, PAC, MHA is a physician assistant (PA) at Mercy Medical Center (MMC) in Rockville Centre, which is a member of Catholic Health Services of Long Island. Morales is New York state licensed and board certified through National Commission on Certification of Physician Assistants (NCCPA).

Morales serves as director of advanced practice providers where she oversees MMC PAs and nurse practitioners in the medicine, surgery, obstetrics/gynecology and critical care services. She maintains her clinical experience and procedural skills in the critical care service and a neurology PA in private practice.

As health care changes, the advanced practice providers (APP) have become major contributors in the delivery of patient care, Morales said.

"Our goal is to establish our APP in all aspects of health care and cultivate and educate prospective physician assistants and nurse practitioners in providing quality health care to the MMC patient community," she said.

"In an effort to be most effective, it was important to me to remain clinical," Morales explained. "To that effect, I continue to cover shifts in the intensive care unit, medicine, as well as practice neurology as a subspecialty. As a result, areas of need were exposed resulting in the creation of new positions. Department growth has been an ongoing process with a focus in further establishing a 24/7 presence."

MMC continues to expand its services with the addition of newly created positions in the ambulatory surgical unit, surgery, bariatric surgery and medicine, Morales noted.

Morales joined MMC in 2008 as a medicine PA in the Intermediate Care Unit. In 2009, she became medicine mid-level practitioner coordinator and, in 2010, she accepted a position in critical care medicine. By 2013, Morales became the medicine and critical care medicine MLP coordinator.

She is a member of American Academy of Physician Assistants, New York State Society of Physicians Assistants and Society of Critical Care Medicine.

Celebrating more than 100 years, Mercy Medical Center is designated a Breast Imaging Center of Excellence by the American College of Radiology, as well as a Bariatric Surgery Center of Excellence® by the American Society for Metabolic and Bariatric Surgery.

In recognition of the value it places on superior nursing care, MMC has the Pathway to Excellence® designation from the American Nurses Credentialing Center. MMC provides

WHO'SWHO

Women in Professional Services

comprehensive medical and surgical care and is a leader in minimally-invasive surgery, joint-replacement, orthopedic surgery, sports medicine, spine and neurosurgery, in-patient acute rehabilitation, diagnostic and interventional radiology, maternity and newborn services and women's health.



Judith Ann Moran-Peters, DNSc, RN, NE-BC, BC is coordinator of nursing research and professional development at John T. Mather Memorial Hospital in Port Jefferson, which is a member of Northwell Health.

Moran-Peters is responsible for the development and growth of nursing research studies and evidence-based nursing projects coordinated through the Research & Professional Development Council and conducted within all patient care areas. She also recruits, mentors and assists participants involved in IRB-Approved Nursing Research Studies and EBP Nursing Projects; and provides oversight and guidance to nurse leaders and direct care nurses throughout the continuum of their nursing research and EBP endeavors.

Over the years, nurses at Mather have conducted research studies and evidence-based practice projects that have significantly improved outcomes among patients, family members and staff, Moran-Peters said.

"In nursing there is an old adage that says, 'If it's not documented, it's not done.' So, to serve as inspiration, for myself and other Mather nurses, I created a new maxim for 2018," Moran Peters noted. "It goes like this: 'If it's not published, did it ever really happen?'"

Since the beginning of the year, I am pleased to say that concerted efforts by Mather nurses have led to completion of three manuscripts, which are currently under review by the editors of nursing journals," she noted. "Although revisions may be required, if all goes well, the scholarly work conducted by Mather nurses will be published as journal articles in 2019."

Prior to joining Mather in 2014, Moran-Peters was assistant vice president for nursing for critical care and behavioral health services and coordinator of nursing research/evidence-based nursing practice at Huntington Hospital.

John T. Mather Hospital is an accredited 248-bed, non-profit community teaching hospital dedicated to providing a wide spectrum of high quality healthcare services to Suffolk County residents. Mather has earned the prestigious Magnet® recognition from the American Nurses Credentialing Center (ANCC), which recognizes healthcare organizations

for quality patient care, nursing excellence and innovations in professional nursing practice. The hospital serves as a clinical campus for the Donald and Barbara Zucker School of Medicine at Hofstra/Northwell.

Mather received the top "A" rating for patient safety from The Leapfrog Group for the second consecutive period, one of only two Long Island hospitals to achieve that distinction. The hospital has received the top rating in 11 of the past 9 rating periods. Mather also was ranked 21st out of almost 250 hospitals in New York State in U.S. News & World Report's annual Best Hospitals rankings.



Hilary L. Moreira is an associate with the law firm of Bond Schoeneck & King PLLC in Garden City. A labor and employment law attorney, Moreira represents and counsels employers in the public and private sectors in all areas of labor and employment law.

She regularly negotiates collective bargaining agreements and represents public employers in Civil Service Law Section 75 hearings, Education Law Section 3020-a disciplinary hearings, discrimination claims, employment litigation and unfair labor practice proceedings before federal and state agencies and courts.

Moreira is well versed in Title VII, the Age Discrimination in Employment Act, the Americans with Disability Act, the Family and Medical Leave Act, the National Labor Relations Act, the Taylor Law and the New York State Human Rights Law.

In the wake of the "Me Too" movement Moreira has seen an increase in requests to conduct harassment training and investigations. "I have also seen more employers ask for their harassment policies to be reviewed and updated," she said.

Moreira also helps with employee issues. "A large part of my practice includes advising clients on how to handle various issues that arise with their employees, from collective bargaining negotiations, to the day-to-day advice related to the myriad of issues that arise within a workforce," she said.

With 265 lawyers and 11 offices, Bond Schoeneck & King PLLC (Bond) is a full-service law firm counseling individuals, companies, not-for-profits and public sector entities in a wide spectrum of practice areas. The Garden City office is one of nine in New York State. The firm has two additional offices in Naples, Florida and Overland Park, Kansas.

Bond's Garden City office opened in 2004 with a contingent of well-respected labor and employment attorneys primarily representing public

sector clients. Today, the office has grown to represent professionals, small and large businesses, banking and finance, real estate and construction, health care, higher education, high-tech, hospitality, manufacturing, municipalities, retail and transportation, as well as numerous school districts and special districts in labor matters.

The firm's attorneys appear in state and federal courts and before administrative agencies on a wide range of commercial issues, personal injury defense litigation (including Labor Law 240 construction cases) and numerous land use matters. The firm has also been included in The Best Lawyers in America®.



Hillary Needle is president of Hillary Needle Events Inc. (HNE), an event planning company that offers a broad range of services to corporations and not-for-profit organizations.

Needle created the company in 2009 and is known for her ability to create exciting opportunities to generate revenue and gain recognition her clients' events. She brings organizational skills and staffing knowledge for a broad spectrum of special events including large galas, golf outings, networking receptions, food tastings, fashion shows, art auctions and educational symposiums.

Needle develops and implements strategies that help organizations brand and grow existing events, as well as builds events from concept to celebration.

"The event planning space can be intimidating and often confusing to those seeking a professional planner as party rental, décor and entertainment companies also use 'event planning' in their marketing," Needle said. "At HNE, we work closely with the client to identify their outside vendor needs and negotiate those contracts on their behalf. We vet and collaborate with the vendors to oversee and manage the creative and logistical aspects of the project in addition to organizing the entirety of the event from creating the written materials, coordinating the volunteer committees, honoree/sponsorship outreach, online registration systems, budgeting, auction merchandising, day of event staffing, event PR and more."

"Clients understand that HNE offers comprehensive services to build the complete event from the ground-up," Needle said.

Needle has more than 20 years of senior management expertise in event planning. Her experience includes serving as director of development for the American Heart Association and as an executive vice president for a prominent event planning corporation active in fundraising

event management for not-for-profit organizations.

Among her many recognitions, Needle was featured in Long Island Woman magazine as the May 2014 "Meet this Long Island Woman." She is chairperson for membership of the Nassau County Museum of Art's Corporate Committee; member of the Executive Women's Golf Association of Long Island; and member of the Long Island Association. She is also a member of the 2016 class of Molloy College's The Energeia Partnership, a leadership academy dedicated to identifying and addressing the complex issues challenging the Long Island region.

Hillary Needle Events Inc. works with each client on all facets of the event planning process. HNE relies upon its creative thinking and partnerships with respected and qualified vendors. HNE works within its clients' budget offering various event possibilities including casino nights; cocktail receptions; corporate retreats; galas; golf outings; grand openings; product launches; publicity; and meeting programming.



Anita Nigrel is vice president and customer experience manager at People's United Bank. Nigrel is responsible for oversight of the overall customer experience within 37 branches across Eastern Long Island, including profitability, employee development and retention, and all aspects of the budget. In addition, in collaboration with a broader team of Long Island based market managers, she plays a critical role in training and coaching branch bankers to ensure a consistent, high-caliber experience for all customers in the region.

Individualized attention and guidance for customers is key at People's United Bank, Nigrel said.

"In an environment of commoditized bank products and services, People's United Bank recognizes that no two customers' needs are the same, and neither should our approach be," Nigrel said.

"It has been my personal goal and the bank's mission to retain and develop our bankers to become problem solvers who are empowered to make decisions locally, listening to and responding to their individual needs," she noted. "From our physical branches to our online mobile banking and digital capabilities, we believe in delivering a high-touch, high-tech customer experience. Our aim is to build customer relationships that span generations through our consultative know-how and expert guidance."

Nigrel has an extensive banking career spanning more than 36 years. She joined Suffolk County National Bank in 1989, which was later

WHO'S WHO

Women in Professional Services

acquired by People's United Bank, with roles of increasing responsibility in retail banking.

Nigrel serves as president of The Rocky Point Lions Club and is on the board of East End Arts Council.

People's United Bank is a subsidiary of People's United Financial, Inc., a diversified financial services company with over \$44 billion in assets. People's United Bank, founded in 1842, is a premier, community-based, regional bank in the Northeast offering commercial and retail banking, as well as wealth management services through a network of over 400 retail locations in Connecticut, New York, Massachusetts, Vermont, New Hampshire and Maine. In addition, seven-day banking is available at more than 140 convenient People's United Bank Stop & Shop locations in Connecticut and New York.

JACLYN PERANTEAU, PE
Prime Engineering, P.C.



Jaclyn Peranteau, PE is a principal of Prime Engineering, P.C. in Holtsville and an industry leader in the civil engineering profession with more than 18 years of design and permitting experience in the Long Island, New York City, Westchester, Connecticut and New Jersey areas. Her experiences involve the successful management of multiple project accounts through the design and construction process. With a historic core focus on commercial developments in the private sector, Ms. Peranteau is now currently focusing on providing more expertise in the public sector.

"Last year I was lucky enough to get involved with the design project for Stony Brook University's Indoor Practice Field," she said. "That project gave me the opportunity I needed to prove to the Facility Management Group that although I had no prior public sector work, I was more than capable as an engineer. In fact, my experience in the private sector, my knowledge of the permitting process, and the ability to work under short timeframes, pushed me ahead of my competitors."

"My focus in the next few years is to continue to pursue public sector projects and team up with larger firms for these opportunities," Peranteau explained. "I have since been involved with four other projects at Stony Brook University Campus."

In addition to maintaining professional engineering licenses in eight states to help diversify and expand her potential clientele, she also works in a mentoring capacity with many nonprofit organizations to help cultivate the engineering profession and education to young students.

Her notable recognitions since entering the engineering field are many, including the 2018 Schneps

Stars Under 40 award; 2016 Woman in Design Recognition by the Town of Brookhaven; and the 2009 NYSSPE Suffolk Chapter Young Engineer of the Year Award.

Prime Engineering, P.C. is a professional consulting firm specializing in civil engineering and land development services. The firm is a New York State and New York City Certified Woman-Owned Business Enterprise (WBE). Its work is primarily with private commercial developments in the New York Metro area and Long Island.

Prime Engineering's team is comprised of highly experienced and driven individuals who provide personal attention to projects, help to develop creative and cost effective design solutions, coordinate agency reviews, and lead the project through a successful design and construction project. The firm responds quickly to project related items and client questions and does whatever is necessary to get a project completed.

MELONIE PERNICE
Plainview Hospital



Melonie Pernice is administrative director for radiology and cardiology at Plainview and Syosset hospitals, which are members of Northwell Health. Pernice ensures patients receive quality and compassionate care, while assuring her employees remain engaged in what they do.

The tragic events of 9/11 influenced Pernice to join the United States Army. After basic training and x-ray school, she was deployed to Iraq. She knew after this experience that healthcare was her calling. Upon her return from deployment, Pernice was employed by the Catholic Health Services for many years before joining Northwell Health in 2011.

For the course of this year, Pernice has been focused on diagnostic Imaging. "We aim to improve quality, workflow, and patient satisfaction," she said. "We also are currently working on offering the communities we serve enhanced diagnostic testing. For example, in 2018 Plainview Hospital recently opened a new, state of the art vascular laboratory. The vascular laboratory offers pulse volume recording studies and duplex ultrasound testing. These tests are performed by registered vascular technologists, and interpreted by board certified radiologists."

"This was a collaboration between the radiology and vascular service lines," Pernice noted. "I am consistently looking for new ways to benefit the health of the community and the patient experience."

Pernice holds many clinical certifications and is a Six Sigma Green Belt. Pernice completed the Northwell Health's High Potential Pro-

gram in 2014 and was named Northwell Health's 2018 Leader of the Year recipient.

Plainview Hospital is a 219-bed acute care community hospital that treats patients with a wide range of medical, surgical, and gynecological conditions. The hospital has a same-day surgery program and is also home to one of the Don Monti Cancer Centers. The Emergency Department offers expanded treatment areas and a Fast Track Unit that allows patients with minor illnesses or injuries to be treated immediately.

Plainview Hospital is also a New York State Department of Health Primary Stroke Center. The hospital was recently recognized by the Joint Commission for achieving excellence in performance in its accountability measures for heart attack, heart failure, pneumonia, and surgical care. The facility is also affiliated with the Donald and Barbara Zucker School of Medicine at Hofstra/Northwell.

MICHELE A. PINCUS
Schroder & Strom, LLP



Michele A. Pincus is of counsel to Schroder & Strom, LLP a boutique tax certiorari law firm in Mineola. Pincus assists individuals and businesses in reducing the burden of their real estate taxes. She represents commercial clients in real estate tax litigation, providing property tax advice and litigation strategy to owners, tenants and developers of property throughout New York.

2018 has brought much uncertainty in the real estate industry, Pincus noted.

"The 2018 tax law has changed deductions homeowners may take for their property taxes to \$10,000 or less," she said. "This may have a negative impact on the selling of higher-value homes. Combined with Nassau County's announcement of a reassessment in January 2019 of all properties, these changes have generated significant questions and concerns for our clients."

"We remain dedicated to helping both residential and commercial property owners navigate these important issues and others relative to their property values," Pincus said.

Pincus is admitted to practice law in New York and in Washington, D.C. She is also admitted to practice before the United States District Court for the Eastern and Southern Districts of New York and the Second Circuit Court of Appeals.

Prior to joining the firm, Pincus was a partner at a Uniondale firm where she concentrated her practice in the areas of zoning, land use, commercial litigation, municipal law, real estate and employment law. She previously served as associate general counsel for the Long Island Power Authority.

In 2018, she was named an Out-

standing Woman in Law by Hofstra University's Maurice A. Deane School of Law for her meaningful and inspiring contribution to the legal community.

Pincus serves on the executive board of the Real Estate Institute at Stony Brook University where she chairs the scholarship committee. In addition, she is a member of the Long Island Real Estate Group, the Commercial Industrial Brokers Society and the Long Island Women's Collaborative Steering Committee, sponsored by the Long Island Association.

Pincus is also on the advisory council of Pink Aid Long Island, which raises funds to assist underprivileged women with breast cancer screening and non-medical assistance for those undergoing treatment.

Schroder & Strom, LLP is a leading real estate tax law firm that represents developers and tenants throughout New York State and nationwide. The firm represents its clients' commercial properties, ranging from condominiums and co-ops to shopping centers, retail outlets, and industrial properties, as well as individual residential homes. For 30 years, the attorneys at Schroder & Strom have become the go-to thought leaders in real estate tax issues.

BETH HOWARD PRICE
Plessers Appliance



Beth Howard Price is vice president of builder & trade development at Plessers Appliance in Babylon. Howard Price is responsible for running the company's builder and trade sales division. She works in conjunction with the architect, designer, developer and construction management team to ensure a seamless appliance purchasing experience.

Howard Price works on all phases of the appliance selection from the initial specification process to completion.

"Our long standing relationships with venders enables me to offer the most competitive builder pricing available to the tri-state area," Howard Price said. "I work with a team of expeditors, procurement specialists, delivery teams and customer service agents who are the best in the appliance industry."

Over the years, Plessers has initiated many worthwhile causes to benefit Long Island communities.

"Recently, Plessers has continued to focus on giving back by forming a 501(c)(3) charity foundation, Plessers Charity Foundation Inc.," Howard Price said. "Since its inception, we've held two annual charity golf outings to benefit Long Island Home Builders Care Inc. and Babylon Breast Cancer Coalition. In addition, we've sponsored and organized var-

WHO'SWHO

Women in Professional Services

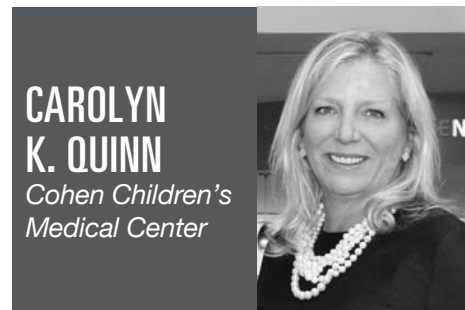
ious other events to help with other Long Island charities.”

“With 2019 marking our 100th year in business, we strive to continue to support our Long Island community,” she said.

Howard Price, along with her brothers, Marc Howard and Alan Howard, are 3rd generation in the appliance business. Plessers was founded in 1919 and Marc purchased the company from Morty Plessers, in 1990. Marc is president and is head of overall operations of the company; and Alan is vice president of sales and runs the retail portion of the business and oversees the Internet sales division.

Howard Price is a member of the Queens & Bronx Building Association; Long Island Builders Institute; National Association of the Remodeling Industry; National Kitchen and Bath Association; and Long Island Home Builders Care.

Nearly 100 years old, Plessers is one of the country's oldest independent appliance stores. Serving Montauk to Manhattan, as well as customers nationwide, Plessers offers over 150 major appliance brands. From initial consultation and planning through specification, pricing and delivery, homeowners and members of the trade community rely on Plessers for their appliance needs.



Carolyn K. Quinn, (Cari) is deputy executive director at Cohen Children's Medical Center (CCMC) in New Hyde Park, which is a member of Northwell Health.

Quinn has 30 years of experience in the specialty of pediatrics. She began her career as a staff RN in the then named Schneider Children's Hospital. Her clinical experience includes neonatal and pediatric critical care, critical transport, bone marrow transplant, and medical/surgical nursing. She pioneered the role of ECMO (extracorporeal membrane oxygenation) coordinator and clinical nurse specialist in the pediatric ICU.

Quinn transitioned to the role of chief nursing officer, associate executive director patient care services in 2003. It was as CNO of CCMC that her vision encompassed the creation and facilitation of strategic planning for nursing, clinical services, and fiscal responsibility for the largest cost center hospital-wide.

Her role as CNO culminated in 2016 when CCMC received the highest coveted recognition in the profession of nursing known as, MAGNET Designation. There were only 444 MAGNET recognized hospitals worldwide.

In June 2016, Quinn was promoted to the position of deputy executive director of CCMC. Functionally she serves as the chief operating of-

ficer. In two years, she has established a culture of accountability with the operational team.

“At Northwell's Cohen Children's Medical Center, our goal is always to ensure the highest quality of care for the children and families we serve,” Quinn said. “We strive to improve the effectiveness of our performance by analyzing financial and patient care metrics and measuring those results against the quality benchmarks of our strategic plan. By focusing on measurable outcomes, our entire team — physicians, nurses and administrators — is able to continually deliver a superior patient experience to those we care for.”

Founded in 1983, Cohen Children's Medical Center is a 202-bed hospital dedicated exclusively to the care of children. The specialists in the hospital's national and international programs cover an entire range of specialties. State-of-the-art care for children's medical, surgical, and dental needs is provided in both inpatient and outpatient settings. The facility serves 1.8 million children in Brooklyn, Queens, and Nassau and Suffolk counties. For the 12th consecutive year in 2018, Cohen's was ranked among the nation's best children's hospitals in U.S. News & World Report's 2018-19 “America's Best Children's Hospitals” survey, achieving top-50 rankings in eight of 10 pediatric specialties.



Jane Reid is vice president of Human Resources at Empire National Bank.

Human resources works closely with senior management to spearhead the talent search necessary to support the Empire National Bank's growth and expansion, Reid said.

“Empire National has a policy of nurturing existing employees by promoting from within,” she noted. “This has been a cornerstone of the bank's mission since it opened its doors over a decade ago. Our paid internship program is also a source of pride. This successful initiative has resulted in several new hires.”

“Collaboration with bank executives is ongoing in conjunction with our external recruitment agenda, as we are always seeking to employ the best and brightest banking professionals,” Reid said.

A veteran banking professional with experience working at several of the region's most prominent banks in numerous branch and administrative positions, Reid began her career at Bowery Savings Bank. Positions at Chemical and Fleet Banks are also among her professional credentials.

For close to a decade, Reid worked at Long Island Commercial Bank, achieving the title of vice president,

human resources during her tenure there. She continued to serve in that role when the bank was acquired by New York Commercial Bank. One of Empire National Bank's founding employees, she has served as the financial institution's vice president of human resources for over a decade.

Reid is a member of the Society for Human Resource Management (SHRM).

Dedicated to helping small to mid-sized privately-owned businesses, professional practices, not-for-profit organizations, municipalities and real estate professionals grow and prosper, Empire National Bank is committed to bringing the personal touch back to customer service while providing a “neighborhood” banking experience.

Headquartered in Islandia, Empire National Bank has locations in Port Jefferson Station, Shirley and Mineola. A private banking-style, full-service branch is located in Manhattan.



Andrea Restifo, R.N., MPA, MHCDS is associate executive director at North Shore University Hospital (NSUH), a tertiary care facility in Manhasset and a member of Northwell Health. Restifo is responsible for the operations of the quality management, safety services, infection prevention, clinical lab/pathology/blood bank, transplant services, social work and case management. She is responsible for communicating information related to regulatory preparation, quality management methodology, best practices, lessons learned from occurrences to prevent harm, and the establishment of quality/safety initiatives throughout the hospital.

Under her leadership, NSUH has made tremendous strides in becoming a high reliable organization. She has collaborated on instructional materials for performance improvement that have been presented at numerous national and international healthcare conferences.

Restifo wrote a chapter entitled, The Role of Quality Management for Monitoring and Improving: A Transplant Program, in the textbook Kidney and Pancreas Transplantation (2015). She is co-author of the book, The Quality Handbook for Health Care Organizations: A Manager's Guide to Tools and Programs, (Jossey-Bass).

She is currently a member of the American College of Healthcare Executives and National Association for Healthcare Quality. Restifo serves on the LiveOnNY Quality Assurance Performance Improvement Committee.

As one of the cornerstones of

Northwell Health, North Shore University Hospital, founded in 1953, provides a full range of clinical health care services for patients of all ages. The 764-bed teaching hospital on the 58-acre Sandra Atlas Bass Campus is academically affiliated with the Donald and Barbara Zucker School of Medicine at Hofstra/Northwell, and employs more than 6,000 highly experienced physicians, nurses, and other medical staff.



Denise Sirakowski is associate executive director of perioperative services at Southside Hospital in Bay Shore, which is a member of Northwell Health. Sirakowski is responsible for 10 operating rooms including robotic surgery, heart surgery, neurosurgery, major oncology surgery, trauma and more.

She also oversees more than 200 employees at Southside. Her departments include operating room scheduling, same day admissions (or Pre-op), the operating room, Post-anesthesia care unit (PACU), pain management and endoscopy. Sirakowski's responsibilities include directing perioperative services, controlling day to day operations, managing the financial aspect of the departments and working with human resources to take care of employee issues or concerns while trying to improve staff satisfaction.

Sirakowski focuses on improving the efficiency of the operating room and the patient experience throughout the hospital.

“Providing staff with the tools and resources they need goes a long way to eliminate unnecessary stress,” she said. “The successful initiatives we've launched include providing units with additional equipment and supplies, rearranging supply room areas for easy accessibility, right-sizing the staffing model and cross-training staff so there is more flexibility to provide support to areas that need it.”

“Open communication and team-building are also essential so staff know that they are not alone and can approach their peers and managers with ideas that improve the patient experience,” Sirakowski explained.

With multiple years of previous experience at North Shore University Hospital, Sirakowski most recently worked at Syosset Hospital prior to coming to Southside Hospital.

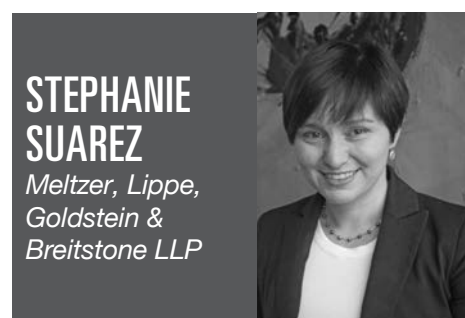
Southside Hospital brings the latest medical innovation, education, and clinical advances to Suffolk County in its 341-bed facility. The hospital's campus includes the award-winning cardiac surgery program located within the Entenmann Family Cardiac Center. Southside Hospital has been recognized for achievement in heart attack care

WHO'S WHO

Women in Professional Services

by the American Heart Association with the Mission: Lifeline Gold award. The hospital has performed about 3,000 open-heart procedures since the program's inception in 2011.

The Bohlson Family Emergency Department provides exceptional services for the community. Southside's trauma center has been designated by the American College of Surgeons as a Level II trauma center. The hospital also provides cutting-edge care in all medical and surgical specialties, including open-heart surgery, neurosurgery, orthopedic surgery, colorectal surgery, urology, minimally invasive surgery, and women's health. The hospital serves as a clinical campus for the Donald and Barbara Zucker School of Medicine at Hofstra/Northwell.



STEPHANIE SUAREZ
Meltzer, Lippe,
Goldstein &
Breitstone LLP

Stephanie Suarez is an associate in Meltzer, Lippe, Goldstein & Breitstone LLP's (Meltzer Lippe) Litigation and Labor & Employment Practice Groups. Suarez represents clients in a wide array of complex commercial litigation matters, and has experience with discovery disputes, motions, oral arguments, depositions, hearings, and trials in local, state and federal courts.

Suarez has been focused on issues surrounding the #MeToo movement.

"While my practice covers many different areas of employment and labor litigation, this year I have been especially focused on guiding my clients through the changing landscape surrounding sexual harassment," Suarez said. "With all of the publicity surrounding the #MeToo movement and the sexual harassment allegations made against many prominent individuals, both employers' and employees' understanding of acceptable treatment in the workplace is rapidly evolving, and New York State and New York City laws on the topic are also in flux."

"Helping my clients continue to meet best practices for ensuring a harassment-free workplace has been both challenging and rewarding," she said.

From 2012 to 2013, Suarez was a law clerk to the Hon. E. Thomas Boyle, United States Magistrate Judge for the Eastern District of New York in Central Islip. Prior to joining Meltzer Lippe, she practiced commercial litigation, banking litigation, and intellectual property litigation as an associate with several firms in the greater New York City area.

Suarez is admitted to practice in New York and Connecticut, and in the United States District Courts for the Southern and Eastern Districts of New York.

In her spare time, Suarez coaches

high school mock trial.

Meltzer Lippe is one of the largest law firms on Long Island. With offices in Mineola and Manhattan, the firm's practice encompasses all aspects of corporate and business law, tax law, employment and labor law, partnerships, limited liability companies and joint ventures, litigation, real estate, tax-exempt organizations, wills & trusts, estate planning & administration, construction law, employee benefits and executive compensation and government relations and regulatory affairs.



CAROLYN SWEETAPPLE, PHD, RN, CPA
South Oaks
Hospital
Zucker Hillside
Hospital

Carolyn Sweetapple, PhD, RN, CPA is executive director of South Oaks Hospital in Amityville and Zucker Hillside Hospital in Glen Oaks, which are members of Northwell Health. Sweetapple oversees the day-to-day operations and strategic plans for both hospitals.

Prior to this position, Sweetapple assumed several leadership roles throughout Northwell Health.

Sweetapple, a registered nurse who specializes in cardiovascular surgery and orthopedics, began her career working in a medical-surgical unit at North Shore University Hospital. She later served as chief nurse executive at Brookhaven Memorial Hospital Medical Center, where she led inpatient care and operations.

Sweetapple is also a certified public accountant and held finance and operations positions at Brookhaven, NYU Winthrop Hospital and Southside Hospital.

The focus for 2018 is to bring awareness to the issue of the stigma surrounding mental health illness and to end that stigma, Sweetapple said.

"One in four Americans are affected by a mental health illness or have a family member or friend who is affected," she said. "It is an illness that affects us all. Yet many people do not seek treatment or delay seeking treatment because of the stigma related to a diagnosis."

"Delay in care can lead to poorer health outcomes which is totally preventable with timely, competent care," Sweetapple noted. "Those suffering with mental illness can lead normal, productive lives while receiving proper treatment."

South Oaks and Zucker Hillside have an amazing team of professionals committed to the care of this very vulnerable population, she noted.

"Our goal this year and always is to 'End the Stigma,'" Sweetapple said.

A member of the Society for Industrial and Organizational Psychology and the Healthcare Financial Management Association, Sweetapple is an adjunct professor in Molloy College's in the MBA in Healthcare

Administration program.

South Oaks Hospital is a 197-bed behavioral health facility that provides world-class care for individuals with mental illness and addiction. Situated on the Nassau/Suffolk County border, the hospital has earned a long-standing reputation for its commitment to quality and compassionate care, crisis management, and treatment and recovery both locally and nationally. For more than a century, South Oaks Hospital has dedicated its expertise, staff and resources to providing treatment and recovery from acute psychiatric illness and addiction in an optimal setting for individualized assessment.

South Oaks Hospital offers narcan training for community members, as well as more than half a dozen support groups. The hospital's employment training program has been partnering with Long Island school districts for 25 years to offer job training to students with developmental disabilities. The hospital serves as a clinical campus for the Donald and Barbara Zucker School of Medicine at Hofstra/Northwell.

Zucker Hillside Hospital is one of Northwell Health's behavioral health centers of excellence, recognized for its world-renowned clinical, teaching and research programs. With 234 beds, the hospital offers a range of inpatient specialties that include early phase treatment of depression, schizophrenia, bipolar, and personality disorders. To complete further studies of schizophrenia, the National Institute of Health established a Clinical Research Center at Zucker Hillside Hospital, which is today one of only four such facilities in the nation.

Outpatient services offer patients the use of various health centers, partial hospital treatment programs, and the full range of psychiatric rehabilitation services that encompass Northwell Health's complete continuum of care. Zucker Hillside Hospital is affiliated with the Donald and Barbara Zucker School of Medicine at Hofstra/Northwell.



KAREN TENENBAUM, CPA
Tenenbaum
Law, P.C.

An attorney for more than 30 years, Karen Tenenbaum, CPA founded Tenenbaum Law, P.C. in Melville, which helps individuals and businesses facing IRS and New York State tax problems. Tenenbaum and her team have successfully represented clients in matters including federal & state audits; IRS appeals & NYS conciliation conferences; federal & NYS collection issues; offers in compromise and installment agreements; responsible officer assessments; NYS residency audits; NYS sales tax audits; and NYS voluntary disclosure.

Tenenbaum sees a lot of residency audits in New York, she noted. "Many people have second homes outside New York State or New York City and think they can easily change their residency to avoid New York's high taxes," she said. "Now the new tax law restricts the state and local tax deduction which may motivate even more people to move out of state and that means more residency audits."

"Also, in New York, we see aggressive enforcement of sales tax laws," Tenenbaum said. "Restaurants, in particular, may face closure of their business if they owe sales tax."

A certified public accountant, Tenenbaum is a frequent speaker on IRS and NYS tax issues for numerous professional groups on topics such as New York State residency, IRS and NYS collections and more. She has been selected as a New York Super Lawyer as a practitioner in Tax Law. Tenenbaum has been quoted in numerous articles in many publications including, Bloomberg Business News, Money Magazine, Daily News on the topics of NYS residency and NYS tax collection.

Tenenbaum is a Long Island Center for Business & Professional Women, Achievers' Award recipient; a New York State Society of Certified Public Accountants, Nassau Chapter, Samuel B. Traum Achievement Award recipient; and has been named by Long Island Pulse magazine as a "Top Ten Legal Eagle," for Most Impressive Case Victory: Residency Matter.

Tenenbaum Law, P.C. represents taxpayers in IRS and NYS tax matters. The firm's tax attorneys focus on matters such as NYS & NYS residency audits, IRS and NYS tax collection, sales tax audits, levies and seizures, voluntary disclosures, installment agreements, offers in compromise, innocent spouse relief, NYS conciliation conferences, individual and business tax audits and penalty abatement requests. The firm has been rated a Top Women-Owned Law Firm in New York by the New York Law Journal.



KRISTEN TRAGANAS
Certilman Balin
Adler & Hyman,
LLP

Kristen Traganas is a partner in the Commercial Lending Practice Group of the Real Estate Department at Certilman Balin Adler & Hyman, LLP.

Traganas' primary focus is representing institutional lenders in providing financing for multi-family and commercial properties, as well as for middle market and small business borrowers. Her practice includes the representation of lenders with respect to financing for condominium boards and home owners associations, secured by the pledge of common/maintenance charges,

WHO'S WHO

Women in Professional Services

assessments and other future receivables. In addition to her lending practice, Traganas acts as counsel to banks with respect to the negotiation of Lockbox, Deposit Account Control, and other types of Tri-Party Agreements.

Traganas also represents current and prospective homeowners and commercial property owners in the purchase of property and refinance of debt. She also acts as counsel to both landlords and tenants in the negotiation of commercial and residential leases.

It is no surprise that commercial lenders are becoming increasingly more risk averse, Traganas noted, adding that they are not alone.

"In a rising interest rate environment, borrowers, just like lenders, are looking to minimize their risk exposure," she said. "The result: short term interest rate lock periods, which catapult a deal into high gear. Working in tandem, however, are stricter underwriting guidelines. Gone are the days of cookie cutter refis, those plain vanilla, bread and butter-type deals that drove the industry for so long."

"While risk elimination may not be an achievable goal, risk mitigation is a concept that is wholly embraced," Traganas said.

Prior to joining our firm, Traganas worked in the music industry in the Manhattan offices of two international record labels. There she specialized in artist development, with a concentration on film and TV music. She negotiated and secured licensing deals, and cleared synchronization licenses and publishing rights.

Traganas is a musician who decided to pursue law. After making this career change, she worked as a settlement agent where she represented various regional lenders with respect to the residential mortgage transactions.

Certilman Balin Adler & Hyman, LLP is among the largest full-service law firms on Long Island with offices in East Meadow and Hauppauge. Its 15 practice areas include: real estate, real property tax certiorari and condemnation, cooperative and condominium, land use, environmental law, corporate/securities, litigation, commercial lending, labor relations/employment law, bankruptcy and debtor/creditor rights, nonprofit/tax exempt and religious organizations, trusts and estates, elder law, telecommunications law, and criminal law.



LISA M. VACCARO
Farrell Fritz, P. C.

Lisa Vaccaro is counsel at the law firm of Farrell Fritz, P. C., concentrating in corporate and financial transactions. Her practice focuses primarily on the representation of financial institutions and borrowers in secured and unsecured commer-

cial lending transactions, including syndicated and asset-based loan facilities. She has extensive knowledge of inter-creditor issues and other areas that impact upon financings, including cross-border issues, specialized collateral (such as gas, artwork and vessels) and foreign collateral.

Vaccaro also advises businesses in connection with corporate transactional matters, including the negotiation and preparation of buy-sell agreements, shareholder agreements, operating agreements and other contracts.

Vaccaro is focused on developments in the London Interbank Offered Rate (LIBOR).

"It's anticipated that LIBOR, which serves as a basis for calculating global bank interest rates, will be phased out by the end of 2021," she said. "This will impact many financing transactions, since most borrowers prefer to utilize LIBOR. Most loan documents provide for a prime rate contingency if LIBOR becomes unavailable; borrowers are already concerned that the demise of LIBOR may leave them paying the much-higher prime rate. International regulators are working to identify alternate reference rates, she noted.

"Until these are in place, lenders want to avoid using contract language that locks them into a replacement rate," Vaccaro explained. "I represent both lenders and borrowers so am keeping a close eye out for the short- and long-term resolution of this issue."

Established in 1976, Farrell Fritz is headquartered in Uniondale, with offices in Albany, Hauppauge, New York City and Water Mill. The firm has nearly 90 attorneys across 18 practice areas.

Farrell Fritz handles legal matters in the areas of bankruptcy and restructuring; business divorce; commercial litigation; construction; corporate and finance; eDiscovery; emerging companies and venture capital; employment law; environmental law; estate litigation; health-care; land use and zoning; New York State Regulatory and Government Relations; not-for-profit law; real estate; tax planning and controversy; tax certiorari, and trusts and estates.

Farrell Fritz attorneys take prominent, active roles in scores of business, legal and philanthropic organizations; numerous are recognized regionally or nationally as leaders in their fields. The firm is well known for its pro bono work, board involvement, volunteer service and substantial financial support of local community organizations.



TAI VICARI
Networking
Marketing
Specialist Media
Agency, Inc.

Tai Vicari is president & CEO of Networking Marketing Specialist Media Agency, Inc. a social media

management and marketing company in Melville, NY. Also known as #NMSPower1, the company is a digital marketing company that provides its clientele with social media branding through many platforms including Facebook, Instagram, LinkedIn, YouTube, Google Business, Pinterest, Twitter and email marketing.

Since the kickoff of 2018, #NMSPower1 has been giving its clients a facelift in their perspective industries, Vicari noted.

"We have been providing them with a unique posting, which focuses on their company's lifestyle, which shows their audience the inside scoop of who and what they are," she said. "We utilize video, real images and community involvement."

"We emphasize how, in the world of technology, people are still serving people," Vicari explained. "Each of their prospects are now provided with a demographics analysis, so whether or not they decide to take on the services of NMSPower1, they still have a guideline for whichever company they decide to trust with their brand message."

Vicari serves on the board of directors as vice president of The Kids Clubhouse of Suffolk, a non-profit organization that provides affordable before-care, afterschool and summer camp for low-income children. She is also fraternal SiSTAR of the Order of the Eastern Star Adah Chapter 52, one of the oldest orders established in 1850.

Launched in 2015, #NMSPower1's team makes weekly visits to clients to take pictures, as well as shadow clients, as needed, to provide a real brand with engagement in both the workplace and the community. #NMSPower1 provides services to many industries including legal services, automotive care, cleaning service, real estate, hair salons & spas, pension & retirement services, HVAC services, retail and food industry and authors providing them with special promotional services to help get their books and writing discovered.



MIRIAM VILLANI
Sahn Ward
Coschignano,
PLLC

Miriam E. Villani is a partner with Sahn Ward Coschignano, PLLC and heads the firm's Environment, Energy, and Resources Practice Group. Her practice focuses on all aspects of environmental law, including litigation, transactional matters, permitting, and regulatory and compliance proceedings.

Villani represents and advises developers, corporations, municipalities, buyers, sellers, and lenders in transactions involving brownfields and other contaminated properties. She also represents clients in environmental litigation in both federal and state courts and before adminis-

trative agencies.

Villani has been following the policy changes as they are being made by the U.S. Environmental Protection Agency under the current administration.

"The agency recently has rolled back a significant number of regulations and programs that were intended to protect our air and water quality," Villani said. "In addition, since taking office, the president has taken steps to save and bolster the coal and the fossil fuel industries; allowed offshore drilling in protected waters and fracking on environmentally sensitive land; and pulled the U.S. out of the Paris Accord. It is necessary to understand how these policies will impact the progress made in environmental protection over the last few decades in order to advise SWC's diverse groups of clients."

Villani began her legal career as an assistant regional counsel for the U.S. Environmental Protection Agency. She was counsel with environmental law practice groups at two prominent Long Island law firms, and was special environmental counsel to a global pharmaceutical company where she managed complex environmental insurance litigation.

In 2016 and 2017, Villani was selected to the New York Metro Super Lawyers list in the practice area of environmental law.

Villani presented a Continuing Legal Education course "Completing a Successful Transaction Involving Contaminated Property" at the New York State Bar Association's Basics of Environmental Law 2018 seminar.

Sahn Ward Coschignano, PLLC in Uniondale is committed to providing its clients with the highest quality representation, counsel, and advice. Practice areas include zoning and land use; real estate law and transactions; litigation and appeals; municipal law and legislative practice; cellular and telecommunications law; environmental law; corporate law; labor and employment law; tax certiorari and condemnation; matrimonial law; and estate planning. The firm strives to assist its clients in a wide array of issues, serving them with skill, experience, resourcefulness and responsibility.



JESSY WARNER-COHEN, PH.D, MPH
Long Island Jewish
Medical Center

Jessy Warner-Cohen, PhD, MPH is the health psychologist at Long Island Jewish (LIJ) Medical Center in New Hyde Park, which is a member of Northwell Health.

Warner-Cohen has been focused on taking creative approaches to issues that tend to "consistently plague hospitals across the country."

"I lend programmatic and content-specific expertise to support



49% of our customers came to us to grow their business

Let us grow your business too.

At ThriveHive, our customers trust us to help them reach their business goals. Whether they want to grow their business, get more leads, or improve their online presence.

There are more ways than ever to market your business online, and we're here to help.

Grow your business today, with ThriveHive.

Long Island BusinessNEWS + **ThriveHive**
libn.com

603.617.3673 | libn.thrivehive.com

Affirmative Action Compliance and OFCCP Defense • Class Actions and Complex Litigation • Collegiate and Professional Sports • Corporate Diversity Counseling • Corporate Governance and Internal Investigations • Disability, Leave and Health Management • Employee Benefits • General Employment Litigation • Government Relations • Health Law and Transactions • Immigration • International Employment Issues • Labor and Preventive Practices • Non-Competes and Protection • Against Unfair Competition • Privacy, e-Communication and Data Security • Wage and Hour • White Collar and Government Enforcement • Workplace Safety and Health • Workplace Training

© 2018 JACKSON LEWIS P.C. | ATTORNEY ADVERTISING

jackson lewis

With more than 850 attorneys in major locations throughout the U.S. and Puerto Rico, Jackson Lewis provides the resources to address every aspect of the employer-employee relationship.

Christopher M. Valentino • 58 South Service Road, Suite 250 • Melville, NY 11747 • 631-247-0404
Christopher.Valentino@jacksonlewis.com • jacksonlewis.com

BE YOUR BUSINESS BEST.

At Grassi & Co., we are much more than just your accounting firm: we are specialists specifically trained in a diverse range of industries to help your business succeed. Whether your company is large or small, established or just starting up, we can provide a broad range of professional services concentrating on the challenges unique to your organization. Our client-centered approach towards positive business improvements will help you reach the next level of success. Grassi & Co. We are the company you keep.

**50 Jericho Quadrangle, Suite 200
Jericho, NY 11753 | 516.256.3500**

NEW YORK, NY | RONKONKOMA, NY | WHITE PLAINS, NY | PARK RIDGE, NJ



GRASSI & CO.
ACCOUNTANTS & SUCCESS CONSULTANTS®

grassicpas.com

WHO'S WHO

Women in Professional Services

programs that understand and manage our resource-intensive patients in ways that focus on individual care with a systematic approach," she said. "This includes people who present frequently to the hospital with complex medical and or psychiatric needs, or those that demonstrate behaviors that may interfere with their medical care."

Warner-Cohen is also part of a group that has looked at the factors affecting overutilization of the emergency room both from a quantitative and qualitative approach.

"When a person is noted to have complex needs, and often a lengthy medical chart for providers to wade through, I work with a group to create care plans that highlight pieces of information that facilitate consistent care across settings and providers," she said.

Warner-Cohen is also an assistant professor of psychiatry and medicine at the Zucker School of Medicine at Hofstra/Northwell. She has numerous publications and scholarly presentations, primarily focused on the impact of comorbid medical and mental health issues. She has spoken at hospitals across the region regarding adapting the hospital environment to meet the needs of patients with mental health and cognitive issues.

Warner-Cohen has also presented to community groups across Long Island, particularly the topics of anxiety and of managing chronic illness. She has lent her expert opinion for

numerous media outlets such as CBS News, Moneyish, Men's Health and U.S. News & World Report.

Long Island Jewish (LIJ) Medical Center is a 583-bed, nonprofit teaching hospital founded in 1954. The hospital, located on a 48-acre campus, includes the Zuckerberg Pavilion, Katz Women's Hospital, Sandra Atlas Bass Cardiology Center and Harris Chasanoff Heart Institute, Francis and Alexander Cohen Institute of Oncology, Joel Finkelstein Cancer Foundation Radiation Oncology Institute, and outpatient programs at the Center for Advanced Medicine. LIJ Medical Center offers patients world-class cardiology, cardiac surgery, thoracic surgery, orthopedics, head and neck oncology, urology, gynecology, as well as a vascular program. The facility is also affiliated with the Donald and Barbara Zucker School of Medicine at Hofstra/Northwell.



Denise Waslo, MSN, RN, CNOR, CSSM is associate executive director for Perioperative

Services at Long Island Jewish Valley Stream Hospital (LIJ Valley Stream), which is a member of Northwell Health.

Waslo has been with the Northwell Health system for 13 years. Joining LIJMC in 2005, as a staff nurse in the operating room specializing in orthopedics and trauma surgery. Waslo transitioned into the role of nurse educator, allowing her to network with senior leadership, developing the skills necessary for her next roles as an assistant director, followed by the director of perioperative services until 2017.

The 2018 focus in healthcare at LIJVS, previously known as a community hospital, has been to emerge the hospital as a premier center of orthopedic excellence, Waslo noted.

"This past year, we have had the privilege to onboard prestigious orthopedic surgeons that complement our current staff," Waslo said. "Our surgical team performs state-of-the-art joint replacement procedures, and minimally invasive spine surgery."

"LIJ-VS has increased the surgical orthopedic volume by 254 cases and spine procedures by 74 cases, from October 2017-year-to-date," Waslo said. "A major goal this past year, was to

create a change in culture with the staff, and develop the interdisciplinary 'team approach' that will work cohesively to accommodate the increase in the orthopedic surgical volume, while increasing staff, surgeon, and patient satisfaction."

Waslo is a member of the Association of Perioperative Registered Nurses, American Nurses Association and Uplift International - Mission Taghoy-the Philippines, where she trains surgical nurses in the care of those patients undergoing cleft lip and palate surgeries.

Long Island Jewish Valley Stream is a 284 licensed-bed hospital caring for patients in Nassau and Southeastern Queens counties. The full service community hospital is currently building a new state-of-the-art emergency department which is fully staffed with board certified physicians. The Center for Advanced Orthopaedics within the hospital, offers comprehensive orthopaedic care including minimally invasive surgery. Long Island Jewish Valley Stream is also a designated stroke center certified by the American Heart Association. The hospital is also affiliated with the Donald and Barbara Zucker School of Medicine at Hofstra/Northwell.

Your choice of Business Lending Solutions that work best for you.

Commercial Real Estate Mortgage Loans

5.25%
10-Year Term

4.95%
5-Year Term

Get either a 5-year or 10-year term mortgage amortized over 25 years.

- 5.25% fixed rate for 10 years with a 0.50% fee
- 4.95% fixed rate for 5 years with a 0.50% fee
- Mortgage Loan Amounts from \$1,000,000 to \$10,000,000
- Free checking for one year with either mortgage term
- Application requirements must be fully satisfied by **September 30, 2018**; Closing must take place by **December 31, 2018**

Applying for a **Flushing Bank Owner Occupied Commercial & Industrial Mortgage** is easy. Simply call us at **646.923.9515** to speak with a Business Banker. Hurry, this is a limited time offer.

FLUSHING
Commercial • Business • Consumer Bank

1 All business loans, lines of credit and mortgages are subject to credit approval and Bank review. Additionally, Flushing Bank reserves the right to refuse loan applications based on business type or activity. Applicant must meet all credit criteria with no credit exceptions. A full banking relationship with Flushing Bank is required with minimum compensating Business DDA balances of 10% of mortgage amount. Standard pre-payment penalties apply. Speak with a Flushing Bank representative for more information. Flushing Bank is a registered trademark.



LONG ISLAND'S **50** *Top Women*

Thursday, October 18, 2018

6pm-9pm • Crest Hollow Country Club

Launched in 2000, the Top 50 Women in Business program has recognized the most influential women on Long Island. The program's honorees are selected by a judging committee and receive a unique crystal memento at an elegant dinner attended by hundreds.

Learn more at:

LIBN.COM/TOP50WOMEN

For event & sponsorship information
contact **Jenna Macri** at jmacri@libn.com
or **631.913.4246**

Long Island
BusinessNEWS
libn.com

Title Sponsor



Presenting Sponsor



Major Sponsor



Contributing Sponsor





Together we celebrate women leading the way in the workplace.

Congratulations to all the LIBN Who's Who in Women in Professional Services, including our own Lisa Holland, TD Bank Market President.

