



Paradise Post
Paradise

Relocation Guide

FREE!
2017/2018

Area Information
Arts/Recreation
Local Resources
Community Listings

Have Questions?

I've Got Answers!



Rhonda Maehl

*Your Real Estate consultant...
for life.*

- Paradise & Magalia Area Specialist • Top Producer Listing & Sales Since 2002
 - President 2007 Paradise Association of Realtors
 - Member Paradise Association of Realtors since 1994
 - Resident Since 1976

Call today for free information

(530) 519-6546

Rhonda@HelpMeRhondaM.com



RE/MAX
Of Paradise

Each office independently owned and operated.

DANILOV

HOME FURNISHINGS



**\$100
OFF**

DANILOV
HOME FURNISHINGS

Any Purchase of \$1299 or more

Expires September 30, 2018

Not Valid with Any Other Promotion or Previous Sales

Open

Monday - Friday 10-6

Sunday 11-5

Closed Saturday

(530) 872-4958

danilovfurniture.com



CONTENTS

The 2018 directory resources are listings, not recommendations and researched to the best of our ability. No admission or deletion of any group, organization business or company should be interpreted by the reader as a position taken for or against that business

Clubs and Organizations	5	Local & Community Services	17-18
Demographics	6	Places To Go, Things To See	20-21
Discover Paradise	7	Gold Nugget Days	22
Chamber of Commerce Info	8	Paradise Chocolate Festival	23
Education/Schools	10	Parks, Nature Trails	26-27
Art, Theatre & Dance	11	Paradise Recreation and Park District: Creating Community and Quality of Life Through People, Parks and Programs	28
Annual Festivals and Events	12-14	Paradise Lake	29-30
Dining Out	15		
Healthy Living On the Ridge: Local Fitness Centers Offer Wide Array of Options	16		

The Paradise Post Relocation Guide is published annually by the Paradise Post.
For advertising information call **530-891-1234**

Fred Crosthwaite Advertising Director

Cover Photo provided by: David Eakins



Made in Paradise
Since 1969


- Assorted Chocolates
- Artisan Truffles
- English Toffee
- Divinity
- Award Winning Black Gold Truffles
- Sierra Nevada Pale Ale Peanut Brittle

Chocolate

1183 Bille Road, Paradise • 872-9167


WE SHIP ANYWHERE IN THE U.S.

SERVING PARADISE SINCE 1974



MENDON'S NURSERY

**Closed Sunday
Delivery Available**




Mendon's Nursery
5424 Foster Road Paradise 877-7341



CLUBS & ORGANIZATIONS

American Cancer Society
1165 East Ave
Chico
(530) 342-8365

Exchange Club of Paradise
P.O. Box 573
Paradise
(530) 877-4519

Norton Buffalo Hall
5704 Chapel Dr.
Paradise
(530) 762-1490

Bare on the Ridge
P.O.Box 883
Magalia
(530) 873-4308

Feather River Health Foundation
P.O.Box 1466
Paradise
(530) 872-7166

Order of the Eastern Star
5934 Clark Rd
Paradise
(530) 873-0794

#2026
1100 Elk Lane
Paradise
(530) 877-3977

Paradise Rotary Club
P.O. Box 820
Paradise
(530) 877-2654

Youth For Change
5538 Skyway
Paradise
(530) 877-8187

Blood Source
555 Rio Lindo Ave.
Chico
(530) 893-5433

Friends of the Library, Paradise
P.O.Box 1730
Paradise
(530) 872-6320

Pair-O-Dice Chapter E.Clampus Vitus
P.O.Box 711
Paradise
(530) 872-2052

Paradise Host Lions
P.O. Box 2801
Paradise
(530) 877-9150

Paradise Symphony Society, Inc.
P.O. Box 1892
Paradise
(530) 809-0799

Valley Oak Children's Services
3120 Cohasset Road
Suite 6
Chico
(530) 895-3572

Boys & Girls Club of the North Valley
6241 Skyway
Paradise
(530) 872-3662

Gold Nugget Museum
502 Pearson Road
Paradise
(530) 872-8722

Paradise Bus. & Professional Lions Club
P.O. Box 4016
Paradise
(530) 876-8517

Paradise Moose Lodge #2227
5275 Skyway
Paradise
(530) 877-9391

Pine Ridge Women's Club
P.O.Box 967
Magalia
(530) 873-2742

Topcats on the Ridge, Inc.
P.O.Box 2281
Paradise
(530) 872-8112

California Vocations, Inc.
1620 Cypress Lane
Paradise
(530) 877-4146

HeartShine Foundation
(530) 591-3627

Paradise Community Chorus
P.O. Box 1043
Paradise
(530) 872-9252

Paradise Police Officers' Association
5595 Black Olive Drive
Paradise
(530) 872-6241

Quota International of Paradise
P.O.Box 621
Paradise
(530) 877-4072

The Salvation Army Service Center Paradise
7015 Skyway
Paradise
(530) 872-1534

Care Net of Paradise
6189 Clark Road
Paradise
(530) 876-1113

Lyme Disease Assistance, Inc
P.O. Box 1322
Magalia
(530) 828-7881

Paradise Chocolate Fest
5456 Black Olive
Paradise
(530) 342-4896

Paradise Ridge Senior Center
877 Nunneley Road
Paradise
(530) 877-1733

Sojourner's House on the Ridge (SHOR)
P.O. Box 892
Paradise
(530) 872-1162

De Sabla Guild
15247 Skyway
Magalia
(530) 774-5529

Made in Paradise
7837 Skyway
Paradise
(530) 872-3296

Paradise Elks Lodge

Paradise Rod & Gun Club, Inc.
P.O. Box 1081
Paradise
(530) 877-1345

Table Mountain Lodge No. 124, F. &A.M.
5934 Clark Road
Paradise
(530) 877-8231



**PONDEROSA
REAL ESTATE**

**WE'RE PROUD TO BE THE
#1 REAL ESTATE COMPANY
IN THE NORTH STATE.**

**BUY OR SELL WITH US AND
EXPERIENCE THE COLDWELL
BANKER DIFFERENCE.**

(530) 877-6244

www.PONDEROSAREALESTATE.com

7020 SKYWAY, PARADISE, CA

**BROKER LIC. #01198431.
EACH OFFICE IS INDEPENDENTLY OWNED AND OPERATED.**





to our beautiful community. The Paradise Ridge, which is located in the foothills of California's Sierra Nevada mountain range, is primarily a bedroom community with a proud past and a promising future.

This is underscored by the Ridge Community's commitment to continually strive to enhance the quality of life for Paradise residents of all ages, as well as to strengthen the economic climate for our local businesses. While Paradise has been continually ranked as one of the top retirement communities in the nation, it is also a community that has experienced increasing numbers of younger families and small businesses moving in for many of the same reasons that attract retirees. These reasons include a rural, small town atmosphere that has many of the conveniences offered by larger cities: high quality schools, affordable housing, comprehensive public safety services, generally low crime rates, a strong medical and health service support system, excellent parks and recreational facilities and programs, access to a skilled labor pool, close proximity to Butte Community College and California State University, Chico, as well as to some of the most outstanding recreational areas for fishing, boating, and hiking.

Paradise is also a community where history and cultural activities play an important part in the life of the community. The Gold



Photo by Glenn Harrington, Artist by Design

Nugget Museum and its many diverse programs, honoring the history of this community and the larger Ridge area, play a central role in keeping our history alive for our community, and the visitors alike. Our Paradise Performing Arts Center, as well as our Theatre on the Ridge Community Theatre, present many first rate professional productions that bring to Paradise people from throughout our region.

The primary goals of our Town Council and County government are to preserve the natural beauty of Paradise, to encourage well-planned residential and business growth, to provide a greater diversity of local commercial retail, service and job opportunities for our residents, as well as to provide for the public safety of our citizens. We're confident that these goals will be met because this is a community with a unique "can do" spirit. Again, welcome. We hope that you will find Paradise to be "all that the name implies."

DEMOGRAPHICS

Paradise is located in Northern California in Butte County, 490 miles north of Los Angeles, 175 miles north-east of San Francisco, 92 miles north of Sacramento, the State Capital, and 175 miles northwest of famous Lake Tahoe, 22 miles north of Oroville, county seat of Butte County, and 14 miles east of Chico.

The altitude of Paradise ranges from 1,200 to 2,400 feet above sea level; its neighboring communities, Magalia from 2,400 to 2,800 feet, Stirling City at 3,532 feet, and Inskip at 4,816 feet.

Climate varies in the Paradise area. The highest temperature on record is 113 degrees F, the lowest temperature recorded 12 degrees F.

Average rainfall is 51 inches, mostly in the winter months, ranging from November to April. The Upper Ridge averages 6 inches of snow annually, and we average 257 sunny days.



• Population

Paradise - 26,218 Magalia - 11,310

• Elevation: 1,200 to 2,400 ft.

• Prevailing Winds: Direction S.S.E.

Avg. Temperature	Min°	Mean °	Max °
January - March	37.7	48.9	60.0
April - June	45.5	64.9	84.3
July - September	59.2	75.5	91.8
October - December	38.0	56.2	74.3

• Humidity

Summer +/- 30% Winter +/- 70%

• Yearly Rainfall Average 55.07 in.

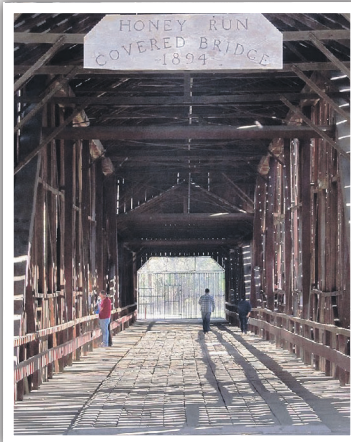
DISCOVER PARADISE

Imagine a community where you can feel safe walking down any street at night. Where folks still smile and take time to chat with neighbors over the produce at the local grocery store. Where a gentle breeze whispers through towering pines and fishing lakes beckon on sunny Saturday mornings.

Imagine all that — and more — and you've imagined Paradise.

Nestled along a well-treed ridge in the Sierra Nevada foothills of Butte County in Northern California, Paradise offers a wealth of opportunities to the folks who live and visit here.

Four distinct — yet pleasant — seasons bring an abundance of wildflowers in spring, summer days perfect for water skiing on the lake, a harvest of golden leaves each fall and crisp winter days occasionally highlighted by the sparkle of snow.



Honey Run Covered Bridge, Photo by Glenn Harrington, Artist by Design

Experience for yourself the beauty of our hillsides, the friendliness of our people and the pride we have in our community. Visit for a weekend — or stay for a lifetime.

We know you'll find Paradise to be all that its name implies.

There's plenty to do

Paradise offers a variety of outdoor activities, including: hiking, fishing, mountain biking, gold panning, hunting, camping and backroad adventures to old mining sites.

An eighteen hole courses cater to the golfers and nearby Lime Saddle Marina on Lake Oroville offers houseboating, waterskiing and jetski rentals. A full service campsite for campers and RVs is located adjacent to Lime Saddle Marina.

If culture is your cup of tea, check out the many classes at Paradise Art Center, the live performances at Theatre on the Ridge, special events at the Paradise Performing Arts Center and community concerts held throughout the year.

If you're thinking of moving to Paradise, you'll find a community that welcomes newcomers. With its old-fashioned, hometown feeling, Paradise attracts many families who are weary of crowded freeways and unsafe cities.

It's all here... from Jobs to Affordable Housing

Employment is available within the town or in the nearby college community of Chico or the county seat at Oroville. Refugees from the "big city" find their housing dollars go much further in Para-

dise. Available housing ranges from well-kept mobile home parks and senior communities to multi-family housing and single family homes in all price ranges.

Education, Churches & Healthcare

Paradise Unified School District provides several options in education at its various public schools. Paradise also offers several private schools. Alternative educational opportunities for students include charter schools and home school support. Churches abound, with more than 25 congregations making their homes in Paradise and the surrounding Ridge communities.

Health services are plentiful — Feather River Hospital offers up-to-date medical care and dozens of physicians of all specialties are available. In-home care agencies, three skilled nursing facilities and numerous small guest homes complete the health-care picture for area residents.

Paradise caters to its older population with many special programs including low-cost transportation, Meals on Wheels, the Paradise Senior Center, specialized senior recreation opportunities and other services and activities.





**Yummy Treats
for Birthdays
Anniversaries
& More!**

**We
Have
Gift
Cards!**

**Stop by and see us!
now located in the
Holiday Shopping
Center**

**6948 Skyway. Ste. B
872-0310**

**M-F Sat Sun
11am-10pm
7 days a week!**



Monica Nolan
Executive Director
monica@paradisechamber.com

Mark Thorp
Membership & Events
mark@paradisechamber.com

EXECUTIVE BOARD

Pamela Teeter, President
A Maker's Space

David Shepler, Vice President
Wells Fargo Bank

Judy Clemens, Treasurer
Theatre on the Ridge

Gail Ennis, Secretary
Repurpose By Design

Jay Cooke, Past President
Professional Mortgage Associates



*Call to find out about
volunteer opportunities!*

(530) 877-9356 (fax) 877-1865

5550 #1 Skyway

Paradise, CA 95969

Across from Town Hall

www.paradisechamber.com

e-mail: info@paradisechamber.com

DIRECTORS

Jenn Brooks,
Independent Consultant, Arbonne

Steve Crowder
A Stitch Above Embroidery & Shirt Printing

Dean Fender,
Paradise Direct

Jeni Harris,
Curves Paradise

Nicki Jones,
HeavenScent Candles & More and Bobbi's Boutique

Carol Peterson,
Boys & Girls Club of the North Valley

Anita Towslee,
Tax Solutions

Shuree Wesley,
M&S Wesley Tree Service

Jill Williams,
Edward Jones Investments

Maureen Wisener,
Feather River Hospital

Important Facts & Phone Numbers

Paradise Town Hall

5555 Skyway • (530) 872-6291

Open Monday-Thursday 8:00 am-5:00 pm

Paradise Ridge Chamber of Commerce & Visitors Bureau

5550 Skyway, #1, Paradise, CA 95969
(530) 877-9356

www.paradisechamber.com

email: info@paradisechamber.com

*Paradise Ridge Chamber of Commerce & Visitors Bureau
hours are Mon./Tues./Thurs./Friday 10 a.m. to 4 p.m.*

For additional area literature call or stop by the Chamber Office.

ANTIQUES, THRIFT SHOPPING

The Secret Is Out

...antiquing. There are numerous charming shops dotting the Ridge providing pleasant browsing for visitors and locals alike. From lace-draped shelves displaying old porcelain to large armoires or sideboards, nearly anything vintage can be found within Paradise town limits. The secret is getting out, antique prices in Paradise are among the best around. The little antique shops have priced themselves for their local clientele. Many of our antique stores include consignment merchandise and collectibles. There seems to be a steady supply of antiques, whether gleaned from estate sales or from seniors who are downsizing. This makes the climate ideal for shoppers coming from higher-income areas. Regardless of the storefront they sit behind, antiques of Paradise are widely known as a great buy, and the hobby of "antiquing" brings countless visitors back to browse and buy. Whether it's the prices or the atmosphere, "antiquing" in Paradise is a must-do for visitors with any penchant for shopping.



Skyway Antique Mall

Antiques & Collectibles

6118 Skyway, Paradise

877-6503

A FUN PLACE TO SHOP YEAR ROUND!

Over 20 Dealers!

TREASURES FROM PARADISE

Antiques & Collectibles

10,000 Sq. Ft.
25 dealers

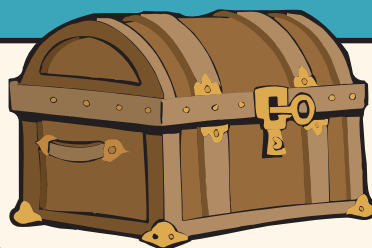
Open 7 days a week
Monday - Saturday 10-5
Sunday 11-4

6051 Skyway
(530) 872-4200

Like us on 

ANTIQUE FURNITURE & GIFTS

Attic Treasures



876-1541
7409 Skyway
in Paradise

EDUCATION & SCHOOLS

Paradise Unified School District oversees the education of more than 5,000 students. Businesses, service organizations and individuals enthusiastically volunteer time and funding to support the special programs. The District actively seeks community input regarding how to best educate its students.

PUSD's goal is to see each of its students graduate. The College Connection, advanced placement and the Independent Learning Center are among the district's special programs to meet students' varied needs. In addition to PUSD schools, the Ridge is home to alternative educational choices including charter, Christian, and preschools.

Many students attend nearby Butte Community College or California State University, Chico while other PUSD graduates attend top universities.

Paradise Unified School District

www.pusdk12.org

Administration Office
6696 Clark Road, 872-6400

Food Services, 872-6496

Maintenance, 872-6495

Transportation, 872-6484

Paradise

Paradise Elementary (K-5)
588 Pearson Road,
872-6415

Paradise eLearning Charter Academy (9-12)
5911 Maxwell Drive,
872-6425 ext. 3104

Paradise High School (9-12)
5911 Maxwell Drive,
872-6425

Paradise Intermediate (6-8)
5657 Recreation Drive,
872-6465

Ponderosa Elementary (K-5)
6593 Pentz Road,
872-6470

Paradise Pines & Magalia

Cedarwood Elementary (K-5)
6400 Colombine Road,
873-3785

Pine Ridge School (K-8)
13878 Compton Drive,
873-3800

Ridgeview High School (9-12)
13665 Old Skyway,
872-6478

Charter Schools

Achieve Charter School (K-6)
711 Elliott Road
Paradise, 872-4100
www.achieveharter.org

Childrens Community Charter (K-8)
6830 Pentz Road
Paradise, 877-2227
www.paradisecchs.org

HomeTech Charter (K-12)
7126 Skyway
Paradise, 872-1171
www.hometech.org

Honey Run Academy (4-6, 7-12)
622 Pearson Road
Paradise, 872-6424
pusdk12.org

Paradise Charter Middle School (6-8)
6473 Clark Road
Paradise, 872-7277
www.pcmsbulldogs.org

Private Schools

Cornerstone Christian School (K-4)
6500 Clark Road
Paradise, 877-3240
www.cccsparadise.org

Lighthouse Christian School (K-12)
1573 Bille Road
Paradise, 872-9029

Magalia Adventist School (1-8)
15204 Skyway
Magalia, 873-9168
www.magaliaadventistschool.org

Paradise Adventist Academy (K-12)
5699 Academy Drive
Paradise, 877-6540
www.mypaa.net

Pines Academy
14098 Skyway
Magalia, 873-1412
www.magaliapines.org

Ridge Preschools

Head Start
6722 Clark Road
Paradise, 872-3415
www.headstartprogram.us

Our Savior Lutheran Day Care Center & Preschool
6404 Pentz Road
Paradise, 877-7321
www.lutheransonline.com

Paradise Preschool
6722 Clark Road
Paradise, 877-8155
www.paradisepreschool.com

Pee Wee Preschool
7196 Skyway
Paradise, 877-0633
www.peeweepreschool.com

Adult Education

Paradise Adult School
622 Pearson Road
Paradise, 872-6424
pusdk12.org

The Writing Loft, Creative Writing School
6397 Graham Road
Paradise, 877-2292
www.thewritingloft.com

Community Colleges

Butte Community College
3536 Butte Campus Dr.
Oroville, 895-2511
www.butte.edu

Universities

California State University Chico
898-4636
www.csuchico.edu

Cal Northern School of Law
www.calnorthern.edu
1395 Ridgewood Drive
Chico, 891-6900



ART, THEATRE & DANCE

Do you love to sing or dance? Or, perhaps you're happier taking a comfortable seat to enjoy local music performances. Either way, the Paradise area is home to several organizations offering opportunities to get involved, or simply sit back and enjoy the show.

Paradise Performing Arts Center

777 Nunneley Road, Paradise.

The 762-seat Paradise Performing Arts Center was built by community donations. It has state-of-the-art sound and lighting systems, a stage with full orchestra pit, and excellent acoustics. Concerts, ballet, theater, multimedia presentations, political rallies, symphony performances, seminars, debates and art shows all make their way to the stage throughout the year. The PPAC works with local groups like Paradise Symphony, Northern California Ballet, the Gold Nugget Museum, and many other artistic programs. The PPAC also attracts, performs, out of town groups and shows. To reach the box office, call 872-8454, or visit www.paradisepperformingarts.com.

Theatre on the Ridge

The oldest non-profit community theatre north of Sacramento can be found at 3735 Neal Road in Paradise. Theatre on the Ridge was founded in 1975, and is completing its 40th year of comedies, dramas, and musicals featuring local talent. The StageCoach Youth Theatre Program provides students with acting, music and dance instruction. Individual and season tickets are available online.

To get involved, audition, donate or volunteer, call 877-5760, www.totr.org.

Visual Arts

"Encouraging, promoting and nurturing the visual arts," the Paradise Art Center has rotating collections of art work and photographs by various artists. Classes in different arts and crafts are offered, such as pottery, china painting, drawing and colored pencil, watercolors, acrylic and oil, creative water media, and children's art workshops. Annual memberships are offered for individuals and families. Local artist members can display and sell their art work, such as handmade greeting cards, at the center.

The Paradise Art Center is at 5564 Almond Street; 877-7402, www.paradise-art-center.com.

Northern California Ballet

Year-round classes, performances, workshops, and elegant fundraisers are offered through Northern California Ballet, 5794 Clark Road in Paradise. The classic annual holiday ballet, "The Nutcracker," performed each December, featuring local talent as well as professional visiting dancers, 872-1719, www.northerncaliforniaballet.com.

Paradise Dancers

Teaching the art of ballroom dance to youngsters, free of charge, is the goal of the Paradise Dancers. A small fee is charged for adult ballroom lessons, but lessons for highschoolers and younger are free. Ages range from 5 to 70. The non-profit has taught more than 1,000 dancers since its inception in 1998. The center is at 1010 Elliott Road, 877-9771, and has a profile on www.facebook.com.

Paradise Ridge Runners

The Cal Vets Ridge Runners Square Dance Club hosts Thursday night dances at the Paradise Veterans Hall, 6550 Skyway. Square dancing and round dancing can be beneficial, social exercises for the body and mind. The group hosts themed events, like a '50s Dance, and Fall Festival. For information call 872-1962, www.ridgerunnersonline.com.

Movies

Paradise Cinema 7, 6701 Clark Road, is the place to go to see new movies on the big screen. The theater features cup-holder arm rests, stadium seating, wide screens, a video game room, senior discounts, and daily matinees starting at 1 p.m. Assistive listening units are available for the hearing impaired, and the building is fully ADA accessible. The showtime recording can be heard by calling 872-7800, and for customer service call 872-1499; www.paradisecinema.com.

Music opportunities

Paradise Community Concert Band plays for community, club, church, and other organizations by request. They perform marches, jazz, traditional, patriotic, classical, Broadway, religious and other music styles. The band is open to all musicians, without auditions. For information contact director Bob Schofield at sbcglobal.net; visit www.paradiseband.org.

Paradise Community Chorus performs public concerts in April and December, providing a forum for local residents of all ages who love singing. For information call director Sam Gronseth at 588-4959, www.paradisechorus.org.

Paradise Symphony Orchestra is committed to providing live symphonic music in our community, and has a youth education program to teach the Ridge's aspiring young musicians to play stringed instruments. www.paradisesyphony.org



Dan Mullanix

(530) 873-7037

mullanixconstruct@yahoo.com

Senior & Military Discounts

Experts in Tankless • Water & Gas Repair

• Drain Cleaning • Valves

Toilets • Faucets • Sinks

License # 851890

ANNUAL FESTIVALS & EVENTS

Do you love chocolate? Local history? Homemade apple pie with ice cream? These are among the things celebrated at events happening throughout the year in the Paradise community. Visitors from outside the area, as well as locals, turn out to mingle and enjoy various themed events. Activities are subject to change; it's best to call ahead, or find information online, to confirm dates and times. Enjoy discovering the Ridge communities in all their splendor, as local organizations come out to celebrate art, the seasons, and more.

Event Highlights

Information current at press time; dates and venues subject to change. Please check www.ParadiseChamber.com for up-to-date information

January

Rotary Crab Feed

February 3, 2018, Paradise Veterans Hall, 6550 Skyway
All you can eat tri-tip and crab. www.paradisechamber.com

February

Mardi Gras Celebration in Paradise

Paradise Senior Center, 877 Nunneley Road
Dance the night away to the New Orleans inspired music of the Alan Rigg Trio with the Artful Horns!!! Festive hors d'oeuvres, libations (including hurricanes & Italian sodas), art drawings, door prizes, beads, and so much more! Follow hwww.paradisechamber.com for more details.

Elks Citizens of the Year Banquet

Paradise Elks Lodge, 1100 Elk Lane
Honoring citizens who share and care. (530) 877-3977

March

Paradise Cook-off

Boys & Girls Club benefit. Unique tasting event features the culinary skills of master and amateur chefs. Includes a sampling of all dishes, cash bar, music, and a raffle. The prestigious Golden Spoon and Voter's Choice awards will be given, as well as an award for Best

Decorations. Sheryl Manies, (530) 899-0335

Annual Easter Egg Hunt

Saturday, March 31st, 2018, 9:30-11:30 a.m., Aquatic Park, 5600 Recreation Drive
For children in preschool through sixth grade, hosted by the Paradise Recreation and Park District, 872-6393, www.paradisepdpd.com.

April

Kid's Fishing Day

Paradise Lake, Lucretia Road, Magalia
Paradise Irrigation District presents annual event for kids ages 3-15. Raffles, prizes, and snack bar. Over 2,000 lbs. of fish planted each year. www.paradisepdpd.com; mrich@paradisepdpd.com. (530) 877-4971

Gold Nugget Days

Presented by the Gold Nugget Museum Held at the Gold Nugget Museum, Terry Ashe Recreation Center, Old Magalia, and other Paradise locations. Parade, craft faire, Queen Contest, Donkey Derby, entertainment & great food during this celebration of the discovery of the 54-pound Magalia nugget in 1859. www.goldnuggetmuseum.com 872-8722.

Bare on the Ridge Fashion Show

Fashion show and luncheon to support Fire safety. www.bareontheridge.org

Quota's Spring Bunco Bash

A huge Bunco party to raise funds for Back-to-School Back Packs for Kids. (530) 877-8721

May

Paradise Chocolate Fest

The Ridge turns into a chocolate lover's paradise at this festival benefiting local youth non-profit organizations. Candidates run for Chocolate Royale King or Queen, and activities include an Evening of Wine & Chocolate Cuisine Challenge, Chocolate Thunder Motorcycle Run, Tour 'de Chocolate Bike Ride and a chocolate pancake breakfast. 342-4896, www.chocolatefest.us.

Fishing Derby

Boys and girls 15 years and younger welcomed; hosted by the Paradise Recreation and Park District. The pond is stocked, and prizes are awarded in several categories, 872-6393, www.paradisepdpd.com.

Spring Ballet

Performed by the Northern California Ballet. www.northerncaliforniaballet.com

Eat, Drink, Buy Paradise ~ Local Shopper Fair

Raffle prizes! Have a drink, a snack and a chat with your colleagues, customers, and prospects. Booths are FREE to new Chamber members. The public always welcome. No host bar and snacks. Monica@ParadiseChamber.com; (530) 877-9356

ANNUAL FESTIVALS & EVENTS

June

“Rollin’ into Jaki’s” Collector Car Show

Jaki’s Hilltop Café, 14112 Skyway, Magalia
Every other Tuesday night through summer, 5-7:30 p.m. Collector cars, muscle cars, hot rods, and motorcycles are featured, with an outside barbecue, raffles, baking contests and coloring contests. 873-1275, jakiscfe.com.

Relay For Life

Paradise High School, 5911 Maxwell Drive, Paradise
Twenty-four hour event presented by the American Cancer Society. Relayforlife.org

“Cruisin’ Classics of Paradise” Car Show

Craft vendors, games, and a raffle. Food and drinks. www.cruisinclassicsofparadise.com.

Party in the Park Music & Marketplace

June - August Paradise Community Park, Pearson and Black Olive
Thursdays 5:30 p.m. til dusk. Artisans, community groups and farmers gather in the park to exchange goods and information. Music, merchandise, food, beer, wine & good times! Monica@ParadiseChamber.com; (530) 877-9356

August

Concours de la Chapelle Classic European Car Show

Chapelle de L’Artiste, 3300 Inspiration Lane, Paradise
Exotic cars, fine art, elegant refreshments, live music, and dancing under the stars will be featured in this annual gala. A benefit for Northern California Ballet. www.concourschapelle.com, 228-0941.

Cowboy Dutch Oven Cook Off

Gold Nugget Museum, 502 Pearson Road. Paradise
A fundraiser for the Gold Nugget Museum. Dutch oven chefs from around Northern California compete. Judging takes place at 2 p.m.; Visitors can buy sampling plates. Admission is free for old-fashioned family fun, with live music all day. Barbecued foods and drinks will be available, 521-1985. goldnuggetmuseum.com

“Bare on the Tuscan Ridge” Golf Tournament

All proceeds support Sawmill Peak Lookout Tower. www.bareontheridge.org

September

Days of Living History

Nugget Museum, 502 Pearson Road. 872-8722
Reliving 100 years of history on the Ridge. Crafts, demonstrations, hands-on activities, food and fun. www.goldnuggetmuseum.com.

Native American Pow Wow

Traditional dancers in regalia, arts and crafts & Native American food. 872-8722.

October

Johnny Appleseed Days

Terry Ashe Park, 6626 Skyway
First weekend in October — Apples and their history on the Ridge are the stars of this two-day festival. Continuous entertainment, artisans, homemade grafts, and children’s games. Apple treats, including homemade apple pies with ice cream. Food and business booths are welcome. 877-9356, www.paradisechamber.com.

Tri Tip Dinner for Boys & Girls Club

Take Out or Dine In

Paradise Ridge Senior Center, 877 Nunnely Road
Carol 521-4027. cpeterson2750@comcast.net

Brews & Blues

Paradise Community Park, 5570 Black Olive Drive
A benefit for local student music programs, presented by the Paradise Exchange Club. Band performances and barbecue. Parents from the Paradise High School music programs pitch in to assist; 872-1975.

Thinking of buying or selling
Real Estate?

Well then, think of us!

Sales • Rentals • Foreclosures • Short Sales
Free Market Analysis



Scan this to
visit our Web
and find out
more about us.

www.paradisemountainre.com

We do it all.



6201 Clark Road, Paradise, CA 95969

(530) 872-6900

** WAC 805

ANNUAL FESTIVALS & EVENTS

Annual Paradise Cowboy Music & Poetry Gathering

An evening of great American Music and Storytelling. Enjoy The Old West Trio, Sourdough Slim and Jim Lynch. A benefit for Paradise Gold Nugget Museum. paradisecowboygathering.com.

Community Halloween

Terry Ashe Park, 6626 Skyway, 872-6393, paradisepd.com
Games, booths, food, and a cake walk are planned, open to the public. A children's costume parade is the highlight. The public is welcome to the spooky party, hosted by the Paradise Recreation and Park District.

November

Pine Ridge Women's Club Fine Wine & Brews

Paradise Elks Lodge, 1100 Elk Lane
Annual fundraiser to provide scholarships to local, deserving college bound students and support local non-profits. Wines from local wineries, beers from local breweries, vendors, drawings, and great hors d'oeuvres. Shirley Williamson, (530) 872-7523

Festival of Trees Tree Auction, Hors'd oeuvres & Spirits

Paradise Veterans Hall, Corner of Skyway and Elliott
A festive holiday evening, substantial hors 'd oeuvres, salad bar, dessert dash and spirits. Live auction of extravagantly decorated Christmas trees. Bid on the tree you love and take it home fully decorated. Hosted by Quota International of Paradise, all proceeds benefit local children for the holidays. Tickets \$20. More info Kathy Hafer, 877-8721.

12 Days of Christmas Ridgefest

Dates TBA
Visit Paradise Ridge Chamber of Commerce member businesses for the Annual "12 Days of Christmas Ridgefest." Local shoppers enter a drawing for ten \$100 Chamber merchant gift certificates and other prizes from local merchants. Each visit to a participating merchant equals an opportunity to win. ParadiseChamber.com; (530) 877-9356

Annual Paradise Holiday Preview

Visit your local businesses and get an early start on your Christmas Shopping. Refreshments, great gift ideas, and holiday décor. Enter the drawing for one of three gift baskets; by visiting all participating stores you increase your chance to win as well as explore more opportunities to buy local.

Paradise Ice Rink

Open from November 10, 2017 – January 15, 2018
Terry Ashe Park, 6626 Skyway
The only outdoor ice rink between Mt. Shasta and Sacramento. The park is transformed into a winter wonderland. Ice skating sessions, skate lessons, music, vendors, concessions, holiday decorations, special events, and parties. 872-6393.

The Salvation Army Thanksgiving Community Dinner

The Annual Salvation Army Thanksgiving Day dinner is hosted by The United Methodist Church, 6722 Clark Rd Paradise

December

Big Truck Light Parade

Starts at Thomas Ace Hardware, Corner Pearson and Clark. Brian Aldrich, 872-2052.





Restaurants, Food & Beverages

(Source: Paradisechamber.com as of 4/30/2017. List subject to change.)

Annie's Country Cafe

5522 Skyway Paradise, CA 95969
(530) 8772418

Baskin Robbins

6848 Skyway, Suite B Paradise, CA 95969
(530) 872-0310

Beans of Paradise

(530) 680-6772

Black Bear Diner

5791 Clark Road Paradise CA 95969
(530) 877-0877

Casa De Paradiso

5667 Clark Rd, Paradise, CA 95969
(530) 877-4107

Cozy Diner of Paradise

6371 Skyway Paradise, CA 95969
(530) 8727008

CocoAmatrice Artisan Chocolates & Gelato

5934 Clark Road Paradise, CA 95969
(530) 872-2922
cocoamatrice.com

Coffee's On

6344 Skyway Paradise, CA 95969
(530) 877-7578

Country Harvest

7126 Skyway, Suite F Paradise,
CA 95969
(530) 877-1472

Dutch Bros. Coffee

6901 Skyway Paradise, CA 95969
(530) 872-3194

Green Paradise Deli Cafe

6695 Skyway Paradise, CA 95969
(530) 876-1964

Jaki's Hilltop Cafe

14112 Skyway Magalia, CA 95954
873-1275

Jaki's Smokehouse

140 Pearson Road Paradise, CA 95969
(530) 877-6440

Jack in the Box

6729 Skyway Paradise, CA 95969
(530) 872-3336

Juice and Java

7067 Skyway Paradise, CA 95969
(530) 872-9633

Kalico Kitchen

7099 Skyway Para-
dise, CA 95969
(530) 877-1255

La Comida #2

6155 Skyway
Paradise, CA 95969
(530) 877-5246

Meehos

6808 Skyway Para-
dise, CA 95969
(530) 877-7031

Round Table Clubhouse

6038B Clark Road
Paradise,
CA 95969
(530) 872-2233

Smokie Mountain Steak & Smoke House

7039 Skyway Paradise, CA 95969
(530) 872-3323

Sophia's Thai Cuisine

7641 Skyway Paradise, CA 95969
(530) 877-4296
sophiathai.com

The Wine Room

6256 Skyway Paradise, CA 95969
(530) 872-8889
wineromandpub.com

Yony's Roasted Corn

949 Central Park Drive Paradise,
CA 95969
(909) 247-5398



Round Table

CLUBHOUSE

PIZZA • PUB • PLAY

6038 Clark Road | 872-2233

Pizza

Full line of Round Table's famous Specialty and Create Your Own Pizzas, plus Flatbreads & Sandwiches

Pub

Rotating selection of craft beers on tap plus a new menu of burgers & appetizers

Play

New state of the art arcade with prize redemption center. Party room for teams, groups & family gatherings

HEALTHY LIVING ON THE RIDGE:

Local Fitness Centers Offer Wide Array of Options

Staying fit and healthy has never been easier, thanks to a variety of health club options on the ridge. Check out the following options, designed to offer something for all ages and fitness levels. For more information or options, contact the Paradise Chamber of Commerce at 530-877-9356

Beyond Fitness

www.beyondfitnessclub.com

Serving Paradise and Magalia, Beyond Fitness offers two Health Clubs with just one membership! Enjoy these full service clubs with a combination of five pools, two jacuzzis, childcare, personal training, group exercise classes, aqua classes, yoga and more.

Skyway Location

7224 Skyway Paradise, CA 95969

(530) 877-7500

M-F 4:30am - 10:00pm; Sa-Su 7:00am - 7:00pm

Pentz Location

6854 Pentz Rd. Paradise, CA 95969

(530) 872-2232

M-Th 4:30am - 10:00pm; Fri 4:30am - 8:00pm;

Sat 7:00am - 5:00pm; Closed Sundays

Ridge Fitness For Women

530-876-1087; www.ridgefitness.org

5538 Black Olive Drive

Paradise, CA 95969

ridgefitfun@gmail.com

Ridge Fitness for Women is designed for women of all ages. Members have access to new specialized hydraulic circuit training equipment, custom Stretch Station with 13 stretch exercises, cardio equipment and fitness trainers on site at all times. Also included, but optional are baseline fitness testing, body fat index testing and body measurement and weight tracking.

Kaia FIT Paradise

530-624-5673; www.paradise.kaiafit.com;

paradise@kaiafit.com

6424 Skyway, Paradise, CA 95969

The Kaia FIT program is designed to increase your fitness level and/or to get you excited about exercising and eating healthy. Finding camaraderie during these sessions is a vital

component to everyone's success. Join other women who understand what you are feeling and give you the motivation to keep you coming back to class. The Kaia program philosophy goes much further than just a fitness workout. Call today to learn more!

Paradise Fitness 24/7

530-872-5090; www.paradisefitness.net

Located on Clark Road in the KMart Center (between Radio Shack & Mt. Mikes Pizza)

Paradise Fitness is the first and only club on the Ridge open 24/7 for your convenience. As a locally owned, neighborhood-style fitness club, we've got you covered. With a Paradise Fitness membership, you determine your most convenient time to work out, and we'll be here for you; you'll have the freedom to workout anytime of the day or night, 24 hours a day, 7 days a week, 365 days a year.

STAFFED HOURS:

Mon. – Thurs: 9:00 - 2:30 & 3:30 - 6:30

Friday: 9:00 - 2:30 & 3:30 - 5:00

Saturday: 9:00 - 12:00



LOCAL & COMMUNITY SERVICES

Community Services

Butte County Board of Supervisors

District 5 Representative - Doug Teeter
747 Elliott Road, 872-6304
www.buttecounty.net

Butte County Small Business Development Center

2480 Notre Dame Blvd., Chico 895-9017

California Department of Motor Vehicles (DMV)

5921 Clark Road, Ste. A
1-800-777-0133
Speech & hearing impaired 800-368-4327
www.dmv.ca.gov

Paradise Animal Control

925 American Way, 872-6275
www.townofparadise.com

Paradise Irrigation District

6332 Clark Rd., 877-4971
www.paradiseirrigation.com

Paradise Library

5922 Clark Road, 872-6319
www.library.buttecounty.net

Paradise Recreation & Parks

6626 Skyway, 872-6393
www.paradiseprpd.com

Paradise Police Department

5595 Black Olive Dr., 872-6241
www.townofparadise.com

911 Emergency Service is supported in the county and your emergency call is handled accordingly. The Butte County Sheriff and California Highway Patrol cover areas outside Paradise.

Fire Department:

872-6264 www.townofparadise.com
The Town of Paradise has three fire stations.
Headquarters and Station #81 is located at
767 Birch Street (between Almond and Black Olive).
Station #82 - 5545 S. Libby Rd.
Station #83 - 1250 Wagstaff.

Paradise Town Hall

55555 Skyway 872-6291

Natural Gas and Power

Pacific Gas & Electric

Customer Service: 1-800-743-5000
www.pge.com

Septic Service

Individual On Site disposal systems.
OnSite Manager, Town of Paradise
872-6291, www.townofparadise.com

USPS - Post Offices

Paradise Post Office

6469 Clark Road
1(800) 275-8777, 872-5150
ZIP Code is 95969 for all street addresses,
Postmaster, General Delivery, and Rural Routes.
The Zip Code for Post Office Box holders
is 95967.

Magalia Post Office

14146 Skyway (Paradise Pines).
1(800) 275-8777, 873-1611
ZIP Code is 95954 for all of Magalia area,
including Nimshew, Coutolenc, De Sabla,
and Lovelock.

Airports

Paradise Airport

Has one 2,000 ft unlit runway with 1,300 ft. overrun for light aircraft. Located south of Paradise off lower Clark Rd.
4405 Airport Road, 343-9600
www.paradiseairport.com

Chico Municipal Airport

150 Airpark Blvd., off Cohasset Road.
896-7699, www.chico.ca.us/airport

Bus & Taxi Services

Butte County Transit

County-wide bus service. BCT also runs a mini-bus between Paradise and Magalia/Paradise Pines. The BCT buses have bike racks.
Contact BCT at (800) 821-8145 or call 342-0221, www.BLineTransit.com

Need Stuff?
Save money...
RENT IT!

Ace RENTALS

(530) **877-4519**

5810 Clark Rd. PARADISE

Mon-Sat: 8am-5pm
Sun: 9am-1pm

\$10 OFF
Your Next Rental!

Excluding Propane. One Per Customer. Not valid with any others offers. Exp. 10/31/17

\$25 OFF
Your Next Rental!

- Over \$100 -

Excluding Propane. One Per Customer. Not valid with any others offers. Exp. 10/31/17



LOCAL & COMMUNITY SERVICES

B-Line

Transportation/taxi service for senior and disabled residents.

342-0221 or (800) 822-8145

www.BLineTransit.com

North Valley Shuttle

Transportation to Sacramento International Airport. 891-1219

www.northvalleyshuttle.com

Paradise Taxi II

5420 Clark Road Ste. B, 876-3200

Super Shuttle

3100 Northgate Blvd., Sacramento

1-800-258-3826

www.supershuttle.com

Disabled Services

California Vocations Inc.

1620 Cypress Lane

Paradise, 877-4146

Work Training Center for the Handicapped

1080 Ewald Court

Paradise, 877-1366

Emergency Services

Salvation Army Service Center

7015 Skyway

Paradise, 872-1534

www.salvationarmyusa.org

REACH-Energy Assistance Services

1-800-743-5000, www.pge.com

The Community Action Agency

6722 Clark Road, Paradise, 712-2600

www.butte.ca.com

Help for People

5533-A Skyway,

Paradise, 872-4357

Food Services

Paradise Gleaners

5420 Clark Road, Ste. F

Paradise, 872-0637

Paradise Meals on Wheels

5974 Pentz Road, 877-8707

www.frhosp.org

Paradise Strive Center

Monday senior lunches

www.paradiseprepd.com

Simple Gesture Green Bag Food Collection

PO Box 1392

876-8448

Health & Wellness Service

Paradise Community

Wellness Connection

5913 Clark Road, Suite C

519-9925

paradisewellnessconnection.org

Social Services

Catalyst Domestic

Violence Services

330 Wall St, Ste. #40

Chico, 343-7711 or 1-800-895-8476

www.catalystdvservices.org

SHOR Homeless

Shelter Program

PO Box 892

Paradise, 872-1162

Valley Oak Children's Services

287 Rio Lindo Ave., Chico 895-3572

www.valleyoakchildren.org

Community Service Hot Line

Call or text 2-1-1

Butte 2-1-1 lines are open 24/7. Get connected to available community services.

Substance Abuse Services

Alcoholics Anonymous,

Adult Children of Alcoholics

Paradise, 342-5756

www.aa.org

American Cancer Society

Tobacco Cessation

(800) 227-2345

www.cancer.org

Skyway House

40 Landing Circle, Chico

Chico • 898-8326

www.skywayhouse.org

Recycling Centers

COVE

8279 Skyway

Paradise, 327-7811

www.nexcyclecalifornia.com

Nexcycle (inside Sav-Mor)

14001 Lakeridge Circle

Magalia, 873-4654

www.nexcyclecalifornia.com

Northern Recycling & Waste Services

920 American Way

Paradise, 876-3340

www.paradiserecycles.com

Rotary Newspaper Bin

Benefiting Paradise Performing Arts Center

5720 Clark Road,

Thomas Ace Hardware parking lot

Transportation Medical & Emergency

Enloe Flight Care

1531 Esplanade

Chico, 332-6774

www.enloe.org

First Responder Emergency Medical Transportation

891-4357

www.firstresponder.com



CHURCH DIRECTORY

Come Worship With Us

Paradise & Magalia



**Open Hearts
Open Minds
Open Doors**

The People of the United Methodist Church

9:00 AM SUNDAY SCHOOL

10:00 AM WORSHIP SERVICE

CHILDCARE IS AVAILABLE THROUGHOUT THE MORNING

Reverend Robert E. Chicou

877-5989

6722 Clark Road, Paradise

across from Paradise Cinema

parumc.org

office@parumc.org



**Paradise
Lutheran
Church**

All are welcome.

Sunday Service 10:00 a.m.

An excellent venue for events of all kinds

Pastor Rod Platte

Vicar Andy Hanawalt

780 Luther Drive, Paradise

(off Skyway, next to CVS Pharmacy)

(530) 877-3549

Visit our website:

www.paradiselutheran.org



PLACES TO GO & THINGS TO DO

From visiting the Gold Nugget Museum, browsing through interesting gift and antique shops, enjoying parks and nature or participating in recreation activities, to researching family history at cemetery, one will find an abundance of things to see and do on the Paradise Ridge.

Antiques and Collectibles

If you are an antique lover, a tour of the many treasure shops offering antiques, gifts, and unique collectibles is a must. Most of these treasure spots are along the Skyway, Pearson and in the older downtown area of Paradise.

Butte Community College

Take a drive through the Butte Community College Campus, Hwy 191 and Durham-Pentz Road. 895-2511, www.butte.edu

Coleman Memorial Community Museum

Up the road from the covered bridge is the Coleman Memorial Community Museum located at 13544 Centerville Road, open 1 to 4 weekends. Admission is free. This museum has local indian artifacts, early 1800 gold mining equipment, and relics of the Civil War era.

Gold Nugget Museum

Begin exploring the Paradise Ridge with a visit to the Gold Nugget Museum at 502 Pearson Road, and admission is free. The museum is open Wednesday through Sunday, noon to 4 p.m., and features historical artifacts from the Paradise Ridge in a number of interesting displays, including Nuggetville, an outdoor exhibit that replicates an Old West town. The museum grounds include Memorial Park, where the museum holds community outreach events throughout the year. In addition to free-standing displays changed periodically, small cubicles in the building present special exhibits:



Photo by Glenn Harrington, Artist by Design

- **The 1930's Kitchen** includes the appliances, utensils, dishes and décor that some of us remember and all of us can enjoy.
- **The Gold Mine**, made of plaster, is intended to give youngsters some sense of the atmosphere in an underground mine. The mining equipment outside the mine is from local operations.

- **The Chicken Farm** features a 1900 Brush Runabout loaded with produce on the way to market.
- **The Doll Exhibit** displays many of the refurbished dolls in the museum's extensive collection.
- **Indian Exhibits**, including a lifesize diorama of acorn grinding, are based on Maidu culture and include baskets, arrow points, fish-net weights, as well as mortars and pestles.

On the museum grounds, in addition to Nuggetville are

- A Wells Fargo assay office
- Working blacksmith shop
- One-room schoolhouse
- Gold panning troughs
- Agriculture barn
- Miner's shack
- Covered bridge over bustling stream
- Picnic tables

Honey Run Covered Bridge

The Honey Run Covered Bridge built in 1894 by George Miller, located in Butte Creek Canyon, lays claim to being the only 3-level covered bridge in the United States. 895-1243 www.honeyruncoveredbridge.com

Inskip

Six miles north of Stirling City is Inskip. The old hotel named Kelly & Company was purchased by John Stokes in 1866 and renamed Stokes Hotel. It was destroyed by fire in 1868 and rebuilt. It was probably then when it was renamed Inskip. A local legend is that the fire was arson and that a "resident ghost" named Charley is still looking for the arsonist. The hotel and a couple of buildings are all that remain of this bustling community. Since 1975, the hotel has been listed in the National Register of Historical Places.

Lime Saddle Marina

View Lime Saddle Marina from Pentz Road, or visit the marina and inquire about renting a houseboat. www.lakeorovillemarina Find more marina info on page 36.

Lookout Point

Lookout Point along the Skyway to Paradise offers spectacular views of Butte Creek Canyon, affectionately referred to by locals as Baby Grand Canyon.

PLACES TO GO & THINGS TO DO

Paradise Depot Museum

The Paradise Depot Museum located at the intersection of Pearson Road and Black Olive Drive in the Paradise Community Park, is open weekends from noon to 4 p.m., and admission is free. The depot was built in 1904 to serve the Butte County Railroad. The Depot Museum was opened by the Gold Nugget Museum in 2007. It includes local railroad and logging artifacts, a 30-foot working model of the Butte County Railroad, videos of rail and logging history and a small gift shop. 872-8722, www.goldnuggetmuseum.com

Paradise Genealogical Society & Library

For more genealogy research in Paradise and Butte County a visit to the Paradise Genealogical Society & Library is a must. The library is at 5587 Scottwood Road (off Pearson) 877-2330. www.pargenso.org

Paradise Parks & Recreation

For information on parks and sponsored recreation events contact the Paradise Recreation & Park District at 6626 Skyway, 872-6393. The PRPD is an independent special district serving the needs of the Ridge community. District Manager is Mike Trinca.

Historic Stirling City

Merlo Park

22 Retson Road, Stirling City
Call first to determine open hours, 873-1658

Stirling City Community Hall

17044 Skyway, 873-1529
Available for Rental www.stirlingcityinfo.com

Stirling City Historical Society Museum/Library Complex

16993-16999 Skyway
Open Saturday & Sunday 1-4 p.m.
873-1598. stirlingcityhistory.org

Historical & Pioneer Cemeteries

Several pioneer cemeteries are on the Ridge. Whether or not you have family buried in the area, these cemeteries are interesting to visit.

- **The Paradise Cemetery** is at 980 Elliott Road, between Skyway and Clark Road, 877-4493. There is another cemetery located on Roe Road in lower Paradise; it is a 36-acre piece of land owned by the Paradise Cemetery District. paradisedirect.com/cemetery
- **Skyway Memorial Park** includes cemetery, mausoleum, and columbarium, in Old Magalia at 13686 Skyway, 876-8000. skywaymemorialpark.net

Other cemeteries include:

- **Magalia Cemetery**, located on Magalia Cemetery Road off Old Skyway in Magalia.
- **Coutolenc Cemetery**, turn left on Coutolenc Road off Skyway in Lovelock for about 1.8 miles, twisting downhill. Turn left onto Hupp- Coutolenc Road, a gravel road about .1 mile and go left up Coutolenc Cemetery Road, which appears as private road. You can also reach the cemetery by taking Coutolenc Road at the signal light on Skyway in Magalia, or taking Hupp-Coutolenc Road (rocky-dirt road) off Skyway.
- **Nimshew Cemetery**, turn left off Skyway on Nimshew Road. Go about 1 1/2 miles to Cemetery Road. There is a small sign high on a tree. Turn right for about 1/2 mile to cemetery on hill. Road is narrow.
- **Toadtown Cemetery**, gravesite of James N. Allen. Turn at red fence off Skyway. Then turn at first right and on up to split rail fence.
- **Lovelock-Gangloff Cemetery**, take Lovelock Road just past the Lovelock Inn to Alonzo Court, 1.6 miles off Skyway. Park at the gray gate, walk down road, take right fork to cemetery.
- **Stirling City Cemetery**, located at the end of Mica Street, about 1 1/2 miles off Skyway. Clean, well-kept cemetery.
- **Inskip Pioneer Cemetery** is a tough one to find. All grave-markers are gone, few rocks in the pine needles mark some of the grave-sites. A marker reads "Inskip Pioneer Cemetery. Those who rest here are known only to God." A barbed wire fence fences off the cemetery grounds, about 1/2 acre. It's located 1.1 miles on the 70-B line logging road, at Powellton Road off Skyway.
- **Centerville Cemetery**, located in Butte Creek Canyon in Centerville.
- **Clear Creek Cemetery**, south of Paradise off Clark Road about 1.5 miles up Clear Clear Cemetery Road.

Terry Ashe Recreation Center

The Terry Ashe Recreation Center is the hub of many special events and activities all year long. Location of the PRPD district office. Here one will find special classes on a variety of interests offered by the recreation department, a basketball court, children's playground, picnic area, seasonal ice skating rink and shaded grassy areas. 872-6393 paradiseprrpd.com

When Only The Best Will Do



5649 Skyway, Paradise **872-3372**

Hours: 9:00-6:00, Mon- Fri

GOLD NUGGET DAYS

Celebrate the rich history of the Ridge! Held annually each April, Gold Nugget Days is the main fundraiser for the Gold Nugget Museum, and celebrates the 1859 discovery of a 54-pound gold nugget. The celebration began in 1959 and has continued every year since. The Gold Nugget Museum is the center of activity for the week-long celebration which has traditionally included the Gold Nugget Queen contest, Gold Nugget Parade, and Barbeque. Additional activities include special performances at the Paradise Performing Arts Center, Gold Nugget Queen Pageant and Children's Costume Contest, spaghetti feeds and pancake breakfasts. For more details and information, visit goldnuggetmuseum.com, or stop by the museum at 502 Pearson Road, in Paradise.



GOLD NUGGET MUSEUM

Located at 502 Pearson Road in Paradise, the Gold Nugget Museum was incorporated as Gold Nugget Days Inc. in 1973. Its mission is to preserve and protect the Ridge heritage through its collection and with community education programs. Visitors will delight in the history, and have the opportunity to experience the history first-hand at one of the hands-on events, such as the Days of Living History. The Museum has a school program, which is part of the curriculum for California history where children spend an entire day on the Museum grounds, living in the 1850s. They

become part of the history that they have studied and come away with a greater understanding of what our ancestors went through to survive. The Museum has a wonderful collection of Maidu Indian artifacts, including a replica of a Maidu woman grinding acorns. On the grounds, you will see a blacksmith shop, a miner's cabin, a schoolhouse and a covered bridge that spans the width of a rushing creek. These exhibits come alive during special events such as Gold Nugget Days, Days of Living History, Living History School Program and other special events during the year.



PARADISE CHOCOLATE FESTIVAL



For the last 13 years, the Paradise Chocolate Festival has offered residents and visitors alike plenty of sugar-coated fun for the whole family. Annually in May, a small group of individuals with big hearts and a love of chocolate come together to plan an event benefiting non-profit youth organizations on the Paradise Ridge. The 2018 event takes place Saturday, May 12, 2018 at Terry Ashe Park on the Skyway from 9 a.m. to 5 p.m. The Fest features the amazing Chocolate Candy Land, where you can dip into decadence at the large chocolate fountain or visit chocolate booths and professional Chocolatiers. Enjoy countless chocolate delicacies, desserts and confections for sale. Fest attendees may also enjoy a blast from the past by visiting the 1950s-themed Lollipop's Old Fashion Ice Cream Shoppe, or taking a walk through the park and enjoying the musical concerts, art in the park, craft, commercial and community booths and a wide range of delicious food selections.

Paradise Chocolate Fest was honored at the 2015 California State Fair as one of the "Top Food Festivals" in the state. It is a past winner of two international awards at the Retail Confectioners International Chocolatiers Convention and Expo held in Hershey, Pennsylvania.

Special events throughout the day include a Chocolate Pancake Breakfast, Chocolate Chase Fun Run/Walk, Chocolate Cuisine Challenge, Chocolate Pie Eating and Cookie Stacking Contests, Super Sensational Ice Cream Sundae Eating Contest, a variety of Musical Entertainment on two stages and chocolate demonstrations. For the convenience of Fest attendees – the Chocolate Fest offers complimentary "Park & Ride" Shuttle Service from designated lots to the Fest – providing 2,000 additional parking spots and all free parking. Plus, the B-Line Bus Service travels from Chico to Paradise and will drop attendees off right in front of the Chocolate Fest.

In addition to the day-long festival, a number of other events take place leading up to, and following, the event.

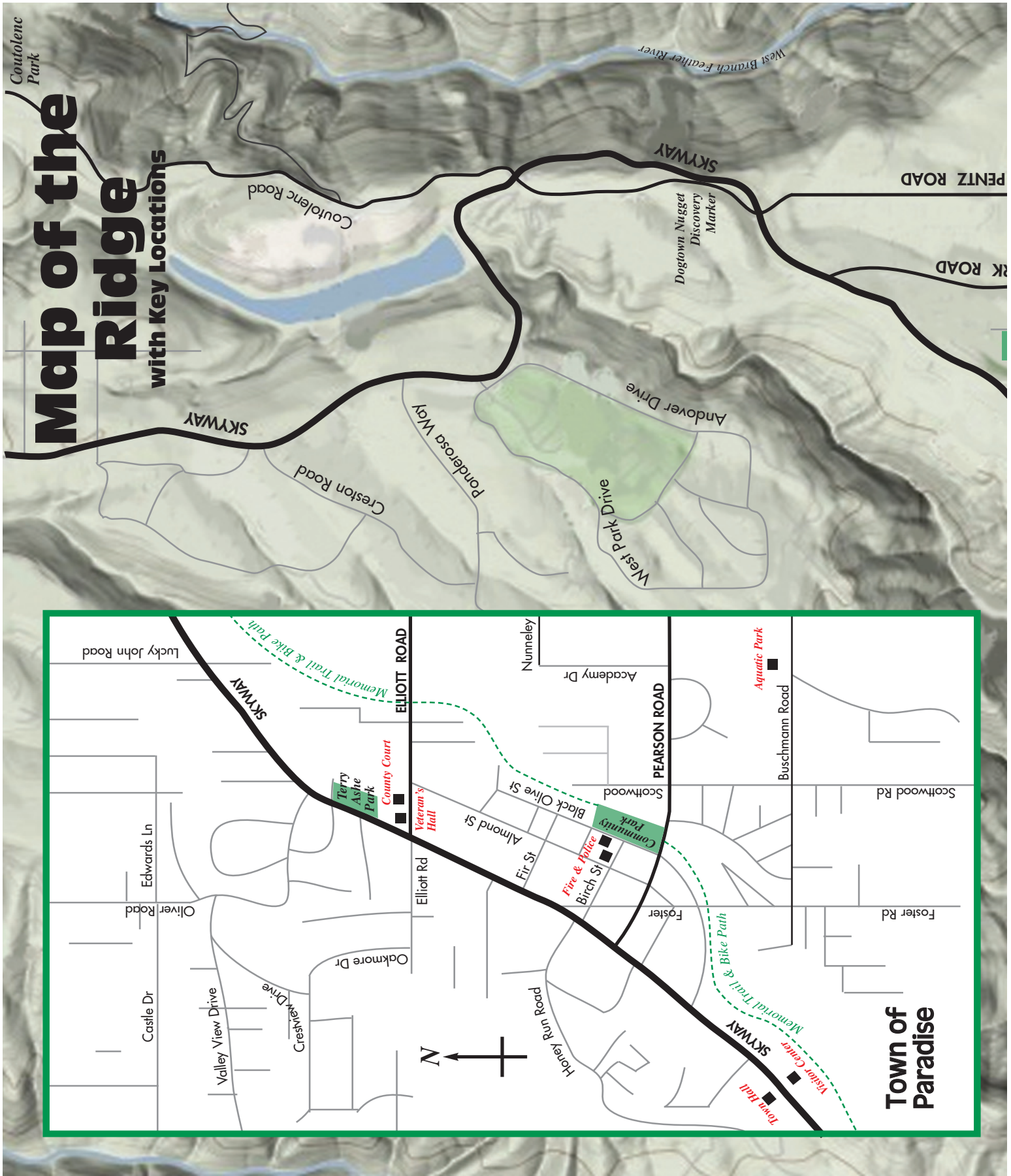


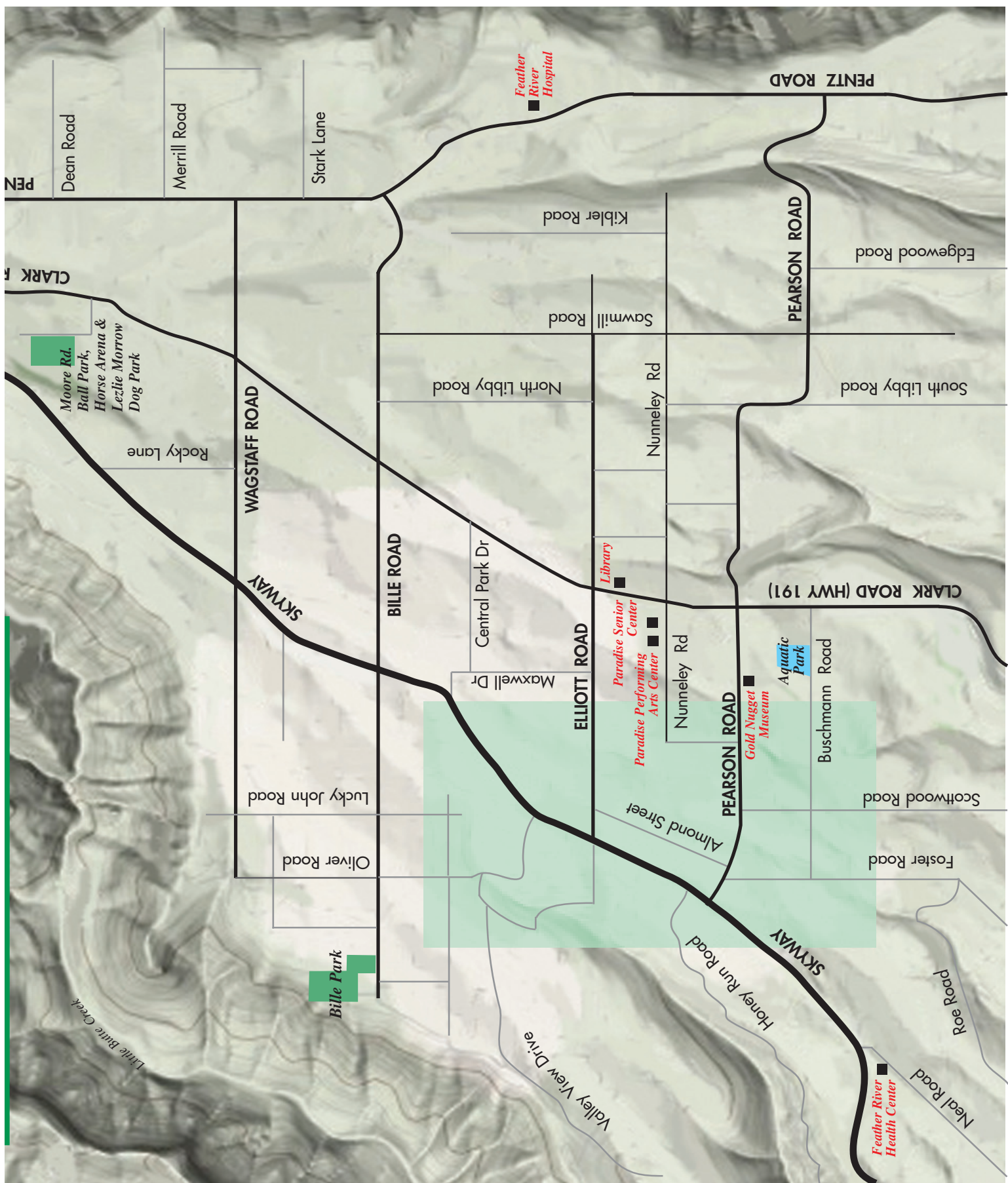
These include An Evening of Chocolate, Wine & Brew, the Beyond Fitness Chocolate Chase 5 & 10 K Runs and 5 K Fun-Walk, Chocolate Thunder Motorcycle Run, BBQ & Rock & Roll, and the Paradise Tour 'de Chocolate Bike Ride.

For information about the Paradise Chocolate Festival, contact "Youth on the Ridge Community Foundation" Executive Director, Debbie LaPlant Moseley at 530/342-4896, email debbie@chocolatefest.us or visit the site website at www.chocolatefest.us

www.lesschwab.com

TIRES • WHEELS • BRAKES • SHOCKS • ALIGNMENTS
6308 Skyway • 877-2424





PARKS & NATURE TRAILS

From Paradise to Stirling City, area parks have something to offer everyone, with ponds, playgrounds, picnic areas, and nature trails. Making them interesting is the fact that some have historic backgrounds. For information on all parks and recreation events contact the Paradise Recreation and Park District at 6626 Skyway, 872-6393. paradisepripd.com. The PRPD is an independent special district serving the needs of the Paradise community.

Aquatic Park

Recreation Dr. at 5600 Buschmann Roar. 872-6386 or 872-6380. Paul Byrne Aquatic Park has a public pool that's open Memorial Day thru August. The Rotary Grove picnic area accommodates 150 people, children's playground area, and a beautiful duck pond with a fountain. Fishing is allowed for kids under 15. Stroll the 660 foot path around the pond.

Bille Park

501 Bille Road, about one mile off the Skyway. Open 7 a.m. to dusk. Bille Park offers a hiking trail along the south rim of Butte Canyon. Two children's playgrounds, a large grassy area, barbecues and picnic tables for groups or individual use.

Bille Park Expansion

6261 W. Wagstaff Road

Offers a pavilion with kitchen, tables and chairs to accommodate 120 people, a gazebo, a hiking trail and water features. Available by reservation.



Bille Park, Photo by Glenn Harrington, Artist by Design

Clotilde Merlo Park

Located in Stirling City. Take the first right off Skyway, then about 1/4 mile to the park. The beauty of this private 27 acre park is amazing. It was dedicated in August 1987 by Harry A. Merlo in memory of his mother. Harry was born in Stirling City and was founding president of Louisiana-Pacific Corporation. It features three large ponds, individual and group picnic areas, restrooms, horseshoe pits, a bocce court, nature trails, and a beautiful outdoor wedding chapel. To reserve the park call 873-1658. Open May to October, 10 a.m. to 7 p.m. Thursday-Sunday, no smoking and no dogs. www.stirlingcity.info. Bring quarters, so you can buy food to feed the fish.

Lezlie Morrow Memorial Dog Park

North on Clark (Past Wagstaff)

Left on Forest Service Road Right on Moore Road Open from sunrise to sunset, seven days per week. Any person bringing a dog into this facility assumes the legal responsibility, jointly and severally, with the owner of the dog, for any damage, disease or injury to persons, other dogs or property, caused by the dog. All persons using the facility, by entering it, agree to indemnify the Paradise Recreation and Park District and hold PRPD harmless for any harm resulting from the use of this facility.

Moore Road Park

On Moore Road, off Forest Service Road and Clark Road, offers two ball fields, a dog park and a horse arena.

Paradise Community Park

Pearson and Black Olive Roads, the Park features the original Paradise Depot restored as a railroad museum, established and maintained by members of the Gold Nugget Museum. Nearby a gazebo, constructed to depict a railroad roundhouse, is surrounded by an amphitheater that provides seating for outdoor performances. Other features include a train caboose, railroad signs, a children's playground, picnic areas, parking and walking paths. The Memorial Trailway winds through the park. 872-6291 www.townofparadise.com

Paradise Memorial Park

Adjacent to the Gold Nugget Museum is a tree covered picnic area with barbecue pits and tables for special events. The park can accommodate 150. Reservations required. www.goldnuggetmuseum.com

Terry Ashe Recreation Center & Park

Location of the Paradise Recreation & Park District Office, 6626 Skyway. Two acres with recreation center, playground, tiny tot play area, basketball court, horseshoes, shuffleboard, and picnic area. All are no smoking areas. Leave nothing, take nothing, obey all warning signs.

Bille Park Hiking Trail

Located on Bille Road, one mile west of Skyway. Bille Park dates back to 1907 when it was an olive and grape orchard. Indian artifacts and dwelling caves have been discovered at the site. The trail is .4 miles, one way. Sections of the trail to the canyon overlook are unimproved, use caution.

PARKS & NATURE TRAILS



Flume Trail, Photo by Glenn Harrington, Artist by Design

Paradise Memorial Trail

This trail is an old railroad right of way which goes the length of Paradise, approximately 4 miles, one way. Starting at Skyway and Neal Road, it takes an easy uphill climb to Skyway and Pentz Road. The section between Fir Street and Rocky Lane is paved, about 2 1/2 miles. Bicycles are allowed, and there is cross traffic at various locations where the trail crosses major streets.

Paradise Lake Trail

Trail runs east around the lake to North Lake Road. Paradise lake is 3 miles east of Skyway. From the Skyway, at the signal light in Magalia, take Coulotenc Road to Lucretia Road.

The Flume Trail

Starts at the lower end of Hupp's Ditch, an abandoned flume, and follows this ditch to a point about 1/4 mile north of Lil Falls where it joins the Upper Trail. Access to the lower end of the flume trail can be reached from the Lane Court entrance or from the new trail which cuts off of the old Carnegie Trail and follows close the seasonal creek. This new trail provides a very gradual descent to the lower end of Hupp's Ditch and is the more scenic of the two connecting trails. Entrance to the Carnegie Trail is located across from 14464 Carnegie Way. At about the mid-point of all trails you will find the "Lil Falls" interchange where all of the main trails join together. The elevation at Lil Falls is about 2100 feet and is one of the most beautiful spots in the Greenbelt. Plant identification signs have been placed on or near the best specimens of various plants (as listed on the trail map/brochure) found along the trails.

Upper Ridge Nature Preserve Trails

The Upper Ridge Nature Preserve has three major trails and several connecting trails or scenic loops. Stop by the Paradise Pines Property Owners Association recreation village at 14211 Wycliff Way for up-to-date map and trail access information. Take Creston Road off Skyway to Wycliff Way, about 1/2 mile.

Lower Trail

The south end of the Lower Trail starts where the gravel section of Ponderosa Way crosses the bridge over Middle Butte Creek at an elevation of just over 1900 feet. From this point the trail follows as close to Middle Butte Creek as the terrain will permit to about 1/4 mile north of "Lil Falls" where it climbs up through a lava bed and intersects with the upper trail.

The Upper Trail

Starts just north of 14452 Colter Way at the south end and runs generally north to Colter and Masterson. The elevation at the south entrance is about 2500 feet and drops rapidly through several switch-backs to about 2300 feet. From this point the trail climbs very gradually to about 2450 feet where it exits on Colter Way.

Note for Dog Owners

Paradise has very strict leash laws, as does Butte County. Very few if any parks and trails allow pets. If you must bring your dog, be aware of regulations where you go to avoid being cited for a violation. You must also pick up after your pet.



PARADISE RECREATION AND PARK DISTRICT:

Creating Community and Quality of Life Through People, Parks and Programs

The Paradise Recreation and Park District (PRPD) offers a wide array of youth and adult activities, events, services and excursions designed to enhance the quality of life for residents and visitors alike. Check out some of the PRPDs upcoming community events and activities below, and be sure to visit their website at www.paradisepprd.com for a complete list of current activities.

Community Halloween

Game booths, ghosts, and goblins will all help to make for a creepily fun time for Halloween. Put on your costume, grab your family and join the PRPD for a ghoulishly good time!

Saturday, October 28, 2017

6:30-8:30pm for all ages

LOCATION: Terry Ashe Recreation Center

Entrance is free

Fee for game booth tickets and Haunted House

Elk's Hoop Shoot

This national basketball free throw shooting contest is for boys and girls of ages 8 to 13 years. Free food and drinks will be provided. Winners can continue to the District finals in Redding.

Saturday 8-13yrs

8:30am – ages 8-9

9:45am – ages 10-11

11:00am – ages 12-13

SESSION: December 9, 2017

LOCATION: Pine Ridge School Gym

Fee: Free Sponsored by Elks Lodge

Easter Egg Hunt

Calling all children preschool to sixth grade to hop on over to the Aquatic Park and join in the PRPD's annual egg hunt with the Easter Bunny! This will be held the day before Easter starting at 9:30am.

Easter Egg Hunt & Children's Scholarship Fundraiser

Save the Date: Time TBD

SESSION: Saturday April 1, 2018

LOCATION: Aquatic Park

FEE: Free

Gold Nugget Craft Faire

This 40th annual event will be held at the renovated Terry Ashe Recreation Center "under the pines". See the variety of crafts created by approximately 90 artisans from all over Northern California, Oregon, Nevada and beyond. Musical entertainment, demonstrations and food will also be featured throughout the weekend. Artisan applications will be available beginning Thursday, January 4th. Sign-ups begin in February for new applicants.

BOOTH FEE: \$150 (crafts); \$175 (food-commercial); \$150 (food-local non-profit)

Saturday 9am-5pm

Sunday 9am-4pm

SESSION: April 28 & 29— RAIN OR SHINE

LOCATION: Terry Ashe Recreation Center

FEE: FREE Admission

Paradise On Ice: Paradise Ice Rink

November 10, 2017—January 15, 2018

(Rink is subject to closure during rainy weather)

Regular Hours:

Monday—Thursday 3-8 pm

Friday 3-10 pm

Saturday 12-10 pm

Sunday 12-8 pm

Holiday Hours:

Veterans Day (Nov. 10) 12-10 pm

(Veterans & Active Military Skate Free)

Thanksgiving Break: November 18-25 12-10 pm

Thanksgiving Day 12-5 pm

Winter Break: December 21-January 6 12-10 pm

Christmas Eve 12-5 pm

Christmas Day 12-5 pm

Martin Luther King Day: January 15 12-8 pm

Paradise Ice Rink Fees

Admission: Includes Skates, if needed

Daily Admission \$12

Individual Season Pass:

\$195 (non-member) / \$185 (member)

Family Season Pass: (up to 4 Family Members, \$50 for each additional) \$335 (non-member) / \$325 (member)

10 Visit Pass: \$100 (non-member) / \$90 (member)

"School Days 2 for 1 Nights"

On Monday through Thursday nights when school is in session, pay one regular admission and a friend can skate for free! 11/13-11/16, 11/27-11/30, 12/4-12/7, 12/11-12/14, 12/18-12/20

Private Rental: Field Trips, Birthday Parties, Corporate Events

Call 872.6393 for pricing and availability.

Rooms in the Terry Ashe Recreation Center can also be rented to coincide with your event when available.

PARADISE LAKE:

Exceptional Recreational Opportunities!

By Alice M. Patterson

With miles of pristine shoreline and a beauty that rivals even the most notorious lakes, Paradise Lake boasts recreational and relaxation opportunities for all. From boating and fishing, to running, cycling and kayaking, the lake is a “must do” for anyone living in or visiting the area. The lake’s recreational uses, though, take a backseat to keeping it clean; the lake also serves as the reservoir providing drinking water for the residents in the Paradise Irrigation District (PID).

The lake is located 10 miles from the center of Paradise, with the entrance to the Picnic Area on Lucretia, 2.7 miles from the Skyway/Coutolenc Road intersection. Entrance to the boat launch is on North Lake Road, 4.7 miles from the Skyway/Coutolenc Road. It includes seven and one-half miles of shoreline, most of it naturally forested and 244 surface acres of water.

Butte County resident John Petterson, an avid runner, loves hitting the trails at the Lake.

“I’ve been coming to the Lake for years,” he said. “It’s literally one of my favorite places in California to run. It’s

quiet, uncrowded, and the scenery is spectacular. In a way, it reminds me of a small Lake Tahoe,” he said.

The lake is open year-round from 5 a.m. to sunset. It’s closed on Wednesdays and two weeks during April. Cost to enter is \$3 per day, per vehicle, or \$20 for a full year beginning January 1. PID customers pay \$15 per year. For boating enthusiasts, the cost is \$10 per day for the first boat, and \$5 for additional single-occupancy boats or \$40 for a full year beginning January 1 and \$20 for additional single-occupancy boats.

For those who enjoy hittin’ the trail, there is a 4.5 mile (one-way) trail around part of the lake, marked at quarter-mile sections. There are portable toilets along the way. Walking, hiking, running and bicycling is encouraged, however there are no motorized vehicles allowed and no dogs (leashed or otherwise).

Two boat ramps can be found on the north shore of the lake, with parking. Kayaking, rowing and canoeing are encouraged, however only electric trolling motors are permitted. There is no swimming, stand-up paddling, jet skis or motorboats allowed on the lake. Fishing is allowed from the shore or by boat. The lake is stocked with trout, and also has bass and bluegill. Fishing rules are the same as state regulations, except no live minnows.



Black Bear Diner
Good Old-Fashioned Family Food!

Come taste for yourself our HUGE portions of home-style cooking. At Black Bear Diner there's something for everyone!

Turkey Pesto Sandwich

Volcano

Southern Fried Chicken Dinner

BREAKFAST
Served ALL Day

LUNCH
Quick & Satisfying

DINNER
Comfort Food Classics

Sun-Thurs 7am - 9pm | Fri-Sat 7am - 10pm

5791 Clark Rd. • Paradise, CA • (530) 877-0877

BlackBearDiner.com Facebook.com/BlackBearDiner #blackbeardiner



Little Caesars

FREE

CRAZY
BREAD AND SAUCE
WITH PURCHASE OF
DEEP DISH PIZZA
FOR
\$8.00

DEEP!DEEP! DISH

Chico
598 E 8th st
894-8300

Chico
118-A W. East Ave
894-5707

Paradise
6848 Skyway
(Holiday Shopping Center)
872-8000

PARADISE LAKE:

Exceptional Recreational Opportunities!

Pack a picnic with your favorite edibles for your visit! There's plenty of seating available in individual and group picnic areas. You'll also find a children's play area and a gazebo area available for rental for that special occasion. On your visit, you might be lucky enough to see some of the beautiful wildlife in the area, as well,

including eagles, osprey, waterfowl and deer. Bear sightings are rare.

Paradise Lake is just one of the many reasons that makes Paradise a special place to live and visit. Be sure to put it on your to-do list for your next trip to the area! For additional information, visit www.VisitParadiseLake.com



Paradise Lake, Photo by David Eakins

EYE LIFE EYE CARE & SURGERY



Your Center Of Excellence for Vision Care

- Eye Exams for Adults & Children
- Cataract, Glaucoma, & Laser Surgery
- Treatment of All Eye Diseases
- Board Certified Physicians

eyelife.net

5889 CLARK RD., PARADISE
530-877-2020



Yes we...

- have gift certificates
- do special orders
- have layaway
- honor competitors' coupons
- have **over 30** other brands of **SHOES** *SOCKS and accessories*

BIRKENSTOCK... *and more*

Downtown • Chico • 345-4880

5781 Clark Road • Paradise • 872-0812

Like us on facebook



- ✓ **Great Experience**
- ✓ **Great Office**
- ✓ **Great Team**

"New to Paradise and needed to find a dentist in the area. I found Paradise Gentle Dentistry online and thought I would give them a try. Really glad I did.

The staff was so friendly and professional. Appointment was on time, state of the art equipment, nice looking office, skilled care. Just Great!"

~Jan W.



Paradise Gentle Dentistry



Dr. Brent E. Parrott, DDS

\$197

\$382 value
Subject to insurance
restrictions.
Offer expires
12/31/17

Includes a
FREE gift!

**New Patient
Special
Exam & Cleaning
413-5225**

5975 Almond St, Paradise

Convenient Hours

**Implants • Root Canals • Cosmetic Dentistry
Emergencies • Invisalign • Dentures • Whitening
Oral Conscious Sedation • Same Day Crowns**

*Bring this ad with you at time of service to
receive this offer.*

FREE SECOND OPINIONS

valspar[®] NOW AVAILABLE AT **ACE**[®]



PREMIUM PAINT. INSPIRING COLORS. HELPFUL ADVICE.



IF YOU DON'T LIKE YOUR COLOR
GET ANOTHER FREE

Restrictions apply. See valsparpaint.com/guarantee for details.

THE PAINT STUDIO 
DREAM IN COLOR

The best tools for saving money. sm



Apply Today! Visit www.acerewardsvisa.com or see your local participating Ace Rewards retailer for more details.

The creditor and issuer of the Ace Rewards Visa Card is U.S. Bank National Association, pursuant to a license from Visa U.S.A. Inc. and the card is available to United States residents only.

FIND US ON:



Visit acehardware.com
for store services, hours, directions and more ...



Corner of Clark & Pearson Paradise • 877-4442

Thomas  Hardware