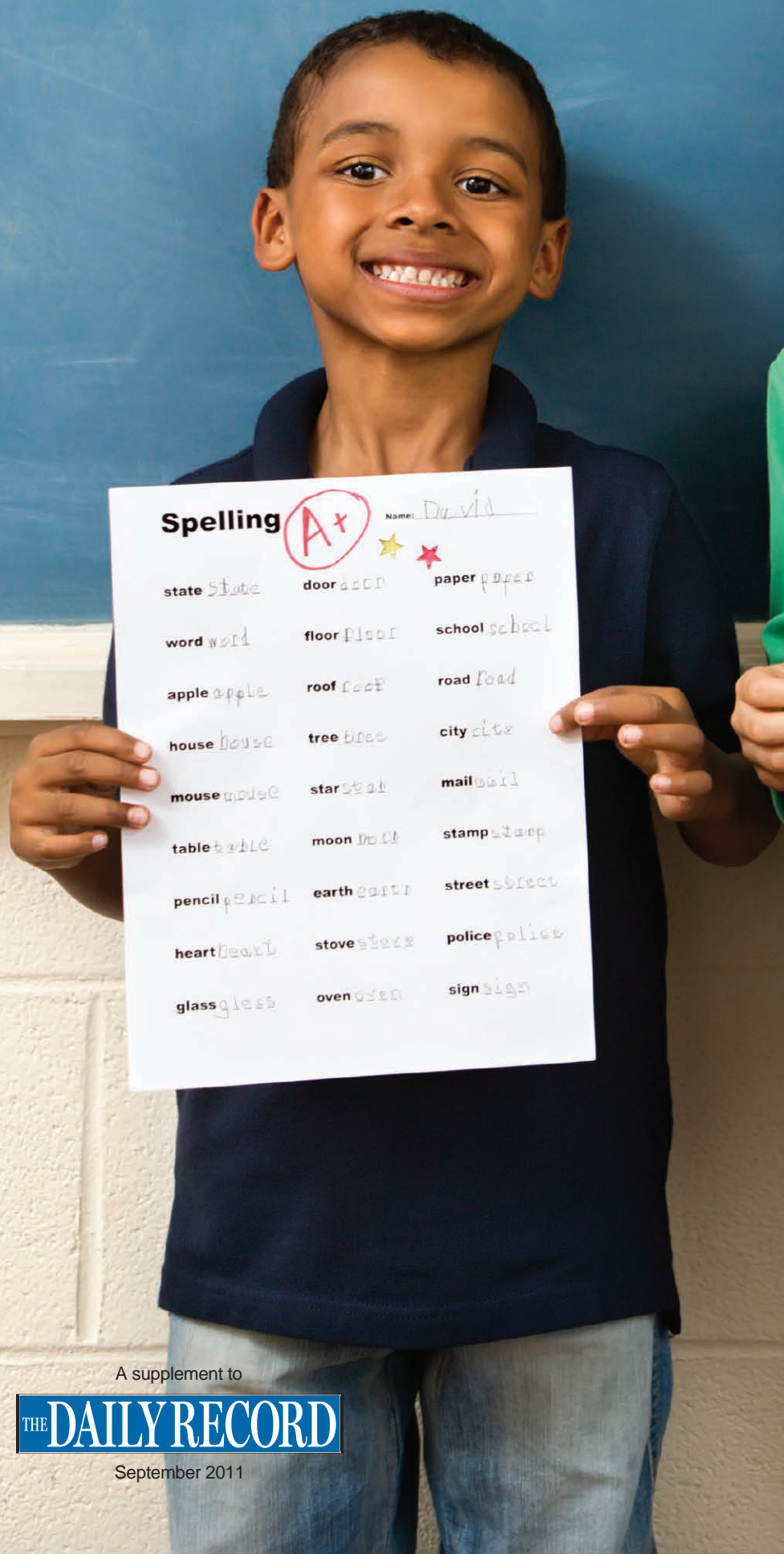


# PRIMARY & SECONDARY SCHOOLS GUIDE 2011



A supplement to

**THE DAILY RECORD**

September 2011



# Private schools reworking STEM

Is your child's school preparing her for the careers of tomorrow?

BY KATIE PALENCAR

Special to The Daily Record

The roster looks like something out of a STEM all-star dream team: Retired Intel CEO Craig Barrett and former astronaut Sally Ride, leading a lineup of companies that include Google, Microsoft, Facebook, Time Warner Cable, Xerox, Exxon Mobil and Accenture.

Those are just some of the 110 corporate members of Change the Equation, a Washington, D.C.-based educational organization dedicated to aligning corporate efforts with science, technology, engineering and math education — commonly referred to as STEM. Change the Equation reported recently that donations by these corporations have been singing to the tune of more than \$500 million a year to improve STEM education in the United States.

In August, the U.S. Labor Statistics Report showed the unemployment rate at 9.1 percent. Interestingly enough, The College Board projects a shortage of 3 million workers with U.S. college degrees, associates or higher, by 2018. What do those conflicting statistics mean?

"There are several million job vacancies in the country right now, but they often don't line up with skill sets



BRYN MAWR

Educators' focus at the all-girls Bryn Mawr School in Baltimore has been to make science, technology, engineering and mathematics applicable to the real world, says Jennifer Galambos, middle school principal.

provided by colleges. Degrees are actually being developed with advisory boards from companies where students may one day hold positions. We are try-

ing to bring the curriculum to the needs of the marketplace, instead of expecting the marketplace to simply accept what we offer," said David King, dean of Graduate Studies and Research at the State University of New York at Oswego and director of the SUNY system's Professional Science Master's Program.

It appears that's precisely what some Maryland private schools are doing.

Karen Smith, principal at St. John Regional Catholic School in Frederick, designated a STEM school by the Archdiocese of Baltimore in January, seems to have figured out the curricular/marketplace connection.

"Schools everywhere are increasing their STEM programs, but it's really about public awareness. We can't get away from the fact that we are educating our kids for careers that haven't been invented yet," Smith said.

Smith and her team created and are following a three-year long-range action plan to be put into place in 2011, which includes:

- Great 4 Business Partnership Program: A "return investment" program that gives local Frederick businesses the opportunity to donate money, time, resources and expertise in St. John classrooms. STEM curriculum partnerships start at \$2,500.

- University partnerships: Collaboration with Mount Saint Mary's University in Emmitsburg includes guidance and professional development for teachers and in-house professors in curricular and STEM content.

- Parent involvement: So far, about 40 parents of St. John students involved or affiliated with STEM-related fields

have volunteered their services and/or expertise in some format.

- Research clusters: In one designated afternoon each month, students focus on project-based learning and research around a chosen STEM topic.

The creation of a STEM Speakers Bureau, mentorship opportunities and an annual STEM Fair also are in the works, Smith said.

"Our STEM programs provide a curriculum that is rich in technology, problem solving, critical thinking and exploration," she said. "This is central to our mission statement in educating students for the 21st century."

## Bridging the gap

Private schools are not eligible to receive any of \$250 million Maryland is receiving as part of the U.S. Department of Education's \$4.35 billion Race to the Top education initiative. But independent schools do have the freedom to develop and adapt individual curricula as they see fit. It happens that STEM is in the educational spotlight today, especially as it is applied within female student populations. And for good reason: According to the National Science Foundation, about 26 percent of U.S.-based scientists and engineers are female. Claus Von Zastrow, chief operation officer of Change the Equation, said "Every year we fail to raise the numbers of girls studying STEM fields or going into STEM careers, we squander an enormous amount of talent."

Jennifer Galambos, middle school principal of the all-girls Bryn Mawr School in Baltimore, said educators' focus there has been to make STEM applicable to the real world.

"Often, subjects can be presented in a box, yet our world is linked together in so many areas," Galambos said. "We're creating curriculum that bridges multiple subject areas. ... It's the collaboration and conversations that teachers are sparking when they return from conferences and the classroom that allows them to put STEM project-based learning into place. We're taking experimentation and theoretical concepts and making

them apply in a real-world lens."

The curriculum also is preparing students well for their upper-school pursuits.

"We have been involved in many of these things before they were even known by the acronym STEM," Susan Solberg, director of Bryn Mawr's Upper School, said. "We have offered a course in computer programming for more than 20 years, and have required that all Upper School students take a technology course called Emerging Technologies

*Challenge.*

*Connection.*

*Confidence.*

*Character.*

877.466.6222

[www.militaryschool.com/bdailyrecord](http://www.militaryschool.com/bdailyrecord)

Campus Tours  
Mondays through  
Saturdays  
Co-Ed, Grades 7-12 & PG



# Keep each child's needs in mind

Student-athletes risk burning out, poor grades if proper balance is not achieved

BY GINA GALLUCCI-WHITE

Special to The Daily Record

Homework, studying, family, practices, games, dates and friends make up only a small list of priorities on the typical student-athlete's schedule.

While there are many demands on a student-athlete's time, there are good and bad ways to help busy students learn to balance school, sports and a social life, several private school athletic directors said.

"Parents and students need to remember that all three are important for healthy adolescent development," said Timothy Holley Jr., athletic director at the Gilman School in Baltimore. "Balanced and vigorous exercising of the mind, body and spirit promotes a well-adjusted and productive student-athlete."

Families must find their own balance, and learn to prioritize, he said. Keep track of how many hours are devoted to activities. If there is a large discrepancy, a reassessment may need to be done.

"Strong physical, mental and emotional health is crucial to positive productivity," Holley said.

One point Hyattsville-based DeMatha Catholic High School Athletic Director Ed King said he makes to students every year is the fact that "sports are temporary. Education is forever."

Once an individual has shot their last free throw, pitched their last ball or made their final touchdown, they need an education to fall back on, King said.

DeMatha is undergoing construction and renovation, and one of the architects is alumnus and former All-Pro NFL linebacker Mike Johnson, King said. Johnson graduated from Virginia Tech with a degree in architecture and is now using his education to make a good life for himself and his family, King said.

"School is number one," King said. "Everything here revolves around school."

## Handling the stress

There are many opportunities for student-athletes, but first and foremost parents should make sure their child is not overwhelmed, said Jeff Clarke, athletic director at Beth Tfiloh Dahan Commu-



MAXIMILIAN FRANZ

Soccer practice began in August at Baltimore's Gilman School, long before classes. Student-athletes must learn to carefully balance their social, athletic and educational lives.

“

The first step to reducing stress around school-related obligations is to have a reasonable mental outlook on what is expected.

**Timothy Holley Jr.**

Gilman School

”

nity School in Baltimore County. Academics, athletics, family, then social life, is an appropriate order for most students' priorities.

"The first step to reducing stress around school-related obligations is to have a reasonable mental outlook on what is expected," Holley said. "If a student-athlete is giving their absolute maximum effort, what else can be asked?"

Encouraging athletes to do their best and not be focused on results is a good way parents can help to reduce their children's stress, he said.

"Results can be used as an assessment tool, but should not be the bottom line to measure achievement," Holley said. "Encouragement comes in a lot of forms. Mostly, positive reinforcement seems to be the most effective. Children want to know that their parents are proud of them and love them, even when they have not been as successful as hoped."

When a student does not perform well, parents should try to intercede in a way that gives their child guidelines and expectations in a loving and gentle way, he said.

Parents should be careful that they do not put too much pressure on their children, Clarke said. Constant reprimands for poor performance almost always ensure an athlete will burn out.

King also advised that parents should allow their children to test out several different sports.

"Everyone wants to pick one sport and be done with it," King said. But students who aren't allowed to try other sports could end up burning or suffer serious injuries from overuse. King mentioned that he's heard of Little League pitchers undergoing ulnar collateral ligament reconstruction — more commonly known as Tommy John surgery — on an arm, which used to only be true of Major League Baseball players working under yearly, grueling schedules.

Trying another sport also can help a student discover a talent they otherwise may not have realized they have.

DeMatha alumnus Derek Mills initially tried out for the basketball team but was cut, King said. Mills decided to try out for the track team and went on to win a gold medal in the 1996 Olympics in the 4x400 meter relay.

"We like to have kids participate in as many sports as they can," King said.

## The field is a classroom

While involvement in sports may lead to more hectic schedules for many families, student-athletes tend to learn many lessons on the field, which can better prepare them for the real world, each athletic director interviewed agreed.

"You can't always be a winner," King said. "You learn from a defeat. You have to pick yourself up and move on."

Students learn many other skills, as well, such as appropriate relationship-building, ways to cope with and manage successes and disappointments, and the satisfaction of attaining goals as an individual and as part of a group or team, Holley said.

Clarke said he believes student-athletes who play more than one sport learn to manage their time more effectively than regular students.

"They plan for their study time and execute, often better than students with a lot of extra time," Clarke said.

Athletes who play a sport or sports all year round also tend to have higher energy levels, he said.

"Exercise makes your metabolism stay high, giving you more energy to complete all your work," Clarke said.



MAXIMILIAN FRANZ

Gilman School Athletic Director Timothy Holley Jr. says students' physical and emotional health are 'critical to positive productivity.'



## About our schools guide

The following pages list independent primary and secondary schools in the state of Maryland, including both secular and religious schools that are not part of the state's public school systems. The list is based on information provided by the website of the Maryland State Department of Education (MSDE) and by the schools themselves. In many cases we talked to school representatives; in some cases we relied on school websites.

A more complete list of independent schools that offer only nursery school or kindergarten classes can be found on the MSDE's website, [www.marylandpublicschools.org](http://www.marylandpublicschools.org); phone (410) 767-0100.

Tuition figures are the latest available. Schools often charge extra fees that are not considered part of tuition. We recommend that readers contact schools directly to check on tuition and to ask about additional fees, enrollment policies and waiting lists.

Readers also should be aware that just because the state licenses a school to teach certain grades, that does not mean all of those grades are offered.

It is important to us (and to our readers) to keep the information in this semiannual guide as accurate as possible. Please bring any discrepancies to our attention by emailing the special publications editor at [Tara.Buck@thedailyrecord.com](mailto:Tara.Buck@thedailyrecord.com).

### Daily Record Staff

Suzanne E. Fischer-Huettner  
Publisher

Tom Linthicum  
Executive Editor, Vice President

Tara E. Buck  
Special Publications Editor

Wayne Countryman  
Assistant Editor

Keith Minney  
Classified Supervisor

Jessica Zwirble  
Graphic Designer

Maximilian Franz  
Senior Photographer

Rich Dennison  
Photographer



ST. JOHN REGIONAL CATHOLIC SCHOOL

**The St. John Regional Catholic School in Frederick, designated a STEM school by the Archdiocese in Baltimore in January, created a three-year, long-range plan for improving STEM education that includes opportunities for partnerships with the local business community and an annual STEM fair.**

“

We can't get away from the fact that we are educating our kids for careers that haven't been invented yet.

**Karen Smith**

St. John Regional Catholic School

”

## STEM >> Problem-solving, critical-thinking skills required

Continued from 2

for nearly that long. The Emerging Tech course has obviously changed over the years. Current students spend their time learning about effective research techniques, presentation software, spreadsheets, web page creation and publication; they explore cloud computing and discuss the ethical and professional issues that can arise when using technology. We offer several other computer science courses, too, including AP Computer Science, and those evolve as the technology changes.”

This year, for instance, students may choose a new course that covers programming applications for iPhones.

Bryn Mawr students are immersed in STEM education outside of the classroom as well. Stacy Williams, director of communications, said students participated in several STEM internships/projects this past summer, including work with the Sickle Cell Science Program and research lab at Johns Hopkins University, the University of Maryland School of Pharmacy, the National Institutes of Health and the J. Craig Venter Institute. Other students assisted in cleaning up after the Gulf of Mexico oil spill near New Orleans and accompanied a medical mission trip to Honduras.

At the Catholic High School of Baltimore, also an all-girls school, students can choose from three academic tracks — STEM, Honors or College Prep. Courses include an introduction to project-based engineering, introduction to programming and digital engineering.

“Not choosing the STEM track does not mean students cannot participate in STEM courses,” Director of Admission Brooke Sterrett said. “We have students that have a passion for fine arts

that may choose a STEM class that interests them. There are correlations even between the arts and STEM learning.”

STEM exposure begins before a freshman's first day of classes at Catholic High. All incoming freshmen attend a mandatory robotics camp over the summer in preparation for their STEM journey. The school also has a strong working partnership with Johns Hopkins in implementing its STEM curriculum throughout the year.

Over the past four years, the school has worked closely with the Archdiocese of Baltimore to develop STEM standards and criteria by inviting educators,

universities and schools to observe and interact with their STEM program and students.

“Our curriculum is aligning core STEM subjects,” Sterrett said. “For example, research shows that students perform better when Physics and Algebra 2 are taught in tandem. We have made that happen.”

In addition to AP courses, motivated students are able to participate in the Distance Learning Center beginning in their sophomore year, and can take college-level courses and earn credit through Newman University in Philadelphia and Anne Arundel Community College.



ST. JOHN REGIONAL CATHOLIC SCHOOL

**A computer lab at St. John Regional Catholic School, Frederick.**



# International offerings emphasized

Growing global society encourages a more global mindset

BY EMILY MULLIN

Special to The Daily Record

When a dozen Prince George's County parents got together in 1988 after becoming frustrated with the quality of education their children were receiving, they decided to do something about it.

Two years later, the members of the group pitched in and bought an old public elementary school building in Landover Hills. The price: just over \$1 million in 1990.

The parents dubbed the building New Hope Academy and established the school with the mission of not just educating students, but promoting what they called "international harmony."

As the world becomes an increasingly globalized society, some independent schools in Maryland like New Hope are tailoring their curriculum to prepare students for college and beyond.

"It teaches you some diplomacy," New Hope Academy principal Joy Morrow said of international educational programs. "You gain a certain sensitivity and learn how to approach different issues in a sensitive manner."

Morrow was one of the original founders of the academy and has run the school since its inception. New Hope now has 225 students, from pre-kindergarten to grade 12. About 10 students every year come from outside of the United States and stay with host families in Maryland throughout the school year. Morrow said she works with foreign exchange student placement organizations to help recruit those students.

As part of its international experience, the academy runs a scholarship program that helps children in Zambia get an education. Students are directly involved in fundraising throughout the school year and act as sponsors to their African peers.

"The students really feel like they're making a difference on the other side of the world," Morrow said.

New Hope Academy also houses a dance studio, art studio, science and technology laboratories and the only Korean language program for primary and secondary school students in the United States. Students can take elective courses like golf, photography, technical design and animation. In addition to Korean, students have the option of studying Spanish, and international students take English as a second language.

The German School in Potomac is another private school with an emphasis on language as an important part of its curriculum.

Students graduate with a fluency in two, three and sometimes four languages, the school's development coordinator, Maureen Thomas, said. To be admitted, students must already speak some German since classes primarily are taught in that language.

With 620 students ranging from pre-K to 12th grade, the school attracts parents who are native Germans, as well as Americans or other nationalities who speak German as a second or third language.

"We have a lot of parents who recognize the value of having their children be bilingual," Thomas said.

The German School follows an educational model set by the German government and has a strong emphasis on



RICH DENNISON

A Garrison Forest School student plays a traditional Chinese instrument during the dedication of the school's Confucius Classroom, a Chinese language and cultural program sponsored by China's Hanban Institute and developed in collaboration with the University of Maryland's Confucius Institute. Students can study Mandarin (grades 6 to 12) and participate in events and programs promoting Chinese language, history, art and culture.

math, science and the arts. Students can receive a German Abitur, a secondary school graduation certificate, and a Maryland High School Diploma upon graduation.

In high school, students participate in a rigorous business competition in which they create and develop a business plan for a new product or service. Seniors

have the opportunity to do an eight-week internship or work-study program as part of their curriculum.

Outside of Baltimore, Garrison Forest School in Owings Mills offers an international experience for parents looking for an alternative to public school. The college preparatory school for girls enrolls 640, with international students

making up about 12 percent of its 280 students in grades 9 through 12.

"I think we see more and more now that students are being asked to not only compete with but also collaborate with people from other cultures," said Melinda Bihn, head of Garrison Forest's Upper School, which includes grades 9 through 12.

Bihn said that's why the school offers various language classes — including French, Spanish, Latin and Mandarin Chinese — and humanities courses such as world religion, peace studies and contemporary world issues. Last fall, the school dedicated a "Confucius Classroom," where assemblies and celebrations of Chinese culture are held and guest speakers can be hosted. The classroom accommodates the school's 70 to 75 students who study the Chinese language.

"So much of the value of international education comes from day-to-day contact with people from other parts of the world and that builds a kind of cultural competence and countenance," Bihn said.

Garrison Forest also allows students to participate in the Jenkins Fellows program, which supports student service programs abroad. Students apply for annual grants by submitting proposals detailing where they'd like to go and what kind of service work they plan to do. Students have visited Guatemala, Israel, Uganda and Romania.

St. Timothy's School, a four-year boarding high school for girls in Baltimore County, also offers students a global immersion program and grants the International Baccalaureate degree. The school's two-year program includes language study and classes such as literature, science, geography, integrated math, art, theater and a basic philosophy class.

Randy Stevens, head of schools, said St. Timothy's decided to institute the International Baccalaureate program six years ago after finding traditional courses too "restrictive."

"One of the failures of American education today is that it has become too specialized and has been too focused on memorization," Stevens said. Instead, IB emphasizes critical thinking skills and essay-based testing.

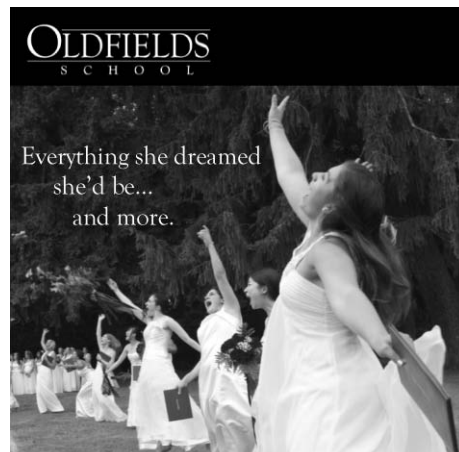
## The Little School is now accepting 3 and 4 year-olds.

Come for a tour and see why 85% of families who visit our classrooms enroll their children.



Tuition prices start at \$310 a month for ten months.

6788 Wilkins Lane  
Chestertown, MD 21620  
www.kentschool.org  
410-778-4100



Oldfields School  
Fall Open House Dates

October 10, 2011 . November 8, 2011  
December 7, 2011

8 a.m.-11 a.m.

RSVP to the Admission Office  
410-472-4800  
Admission@OldfieldsSchool.org  
www.OldfieldsSchool.org

We know how smart she is . . . and by the time she graduates from Trinity, she'll know it too!



Trinity School of Frederick  
Fall Open Houses

October 13, November 9  
9:30 - 11 am

Call to register: 301-228-2333

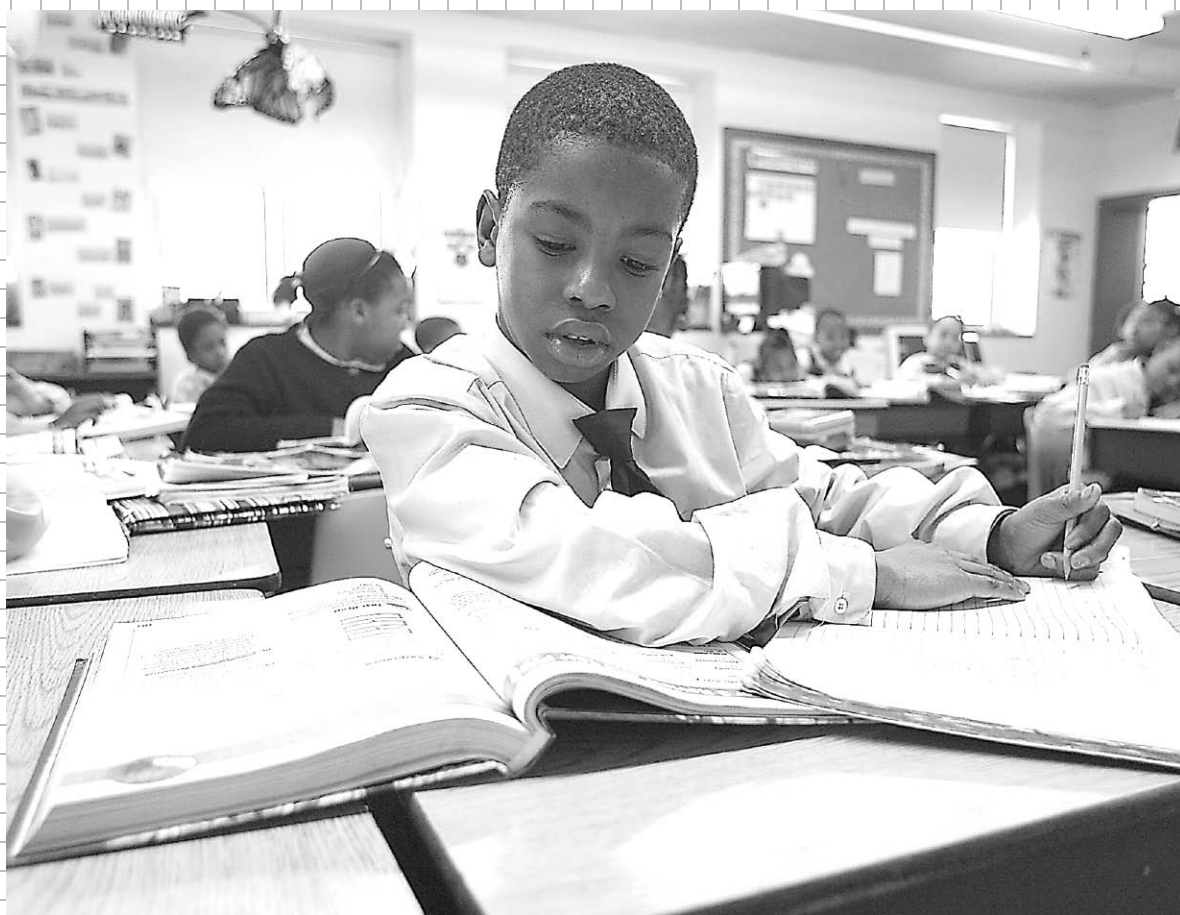
www.TrinitySchoolofFrederick.org

At Trinity School of Frederick, our students are challenged and nurtured to reach their full potential, in every way.

**Don't settle for anything less.**

6040 New Design Road Frederick, MD 21703





ARCHDIOCESE OF BALTIMORE



BRYN MAWR

## Allegany County

### Bishop Walsh School

700 Bishop Walsh Road  
Cumberland, MD 21502  
(301) 724-5360  
[www.bishopwalsh.org](http://www.bishopwalsh.org)  
Grades: N3-12  
Contact: Sister Phyllis McNally

## Anne Arundel County

### Aleph Bet Jewish Day School

1125 Spa Road  
Annapolis, MD 21403  
(410) 263-9044  
[www.alephbet.org](http://www.alephbet.org)  
Grades: K-5  
Contact: Nan Jarashow

### Annapolis Area Christian School

Lower School  
710 Ridgely Ave.  
Annapolis, MD 21401  
(410) 573-6868  
[www.aacsonline.org](http://www.aacsonline.org)  
Grades: Pre-K-5  
Tuition: \$3,961-\$10,252  
Contact: Caroline Stone

### Annapolis Area Christian School

Middle School  
716 Bestgate Road  
Annapolis, MD 21401  
(410) 266-8251  
[www.aacsonline.org](http://www.aacsonline.org)  
Grades: 6-8  
Tuition: \$10,318  
Contact: Drew Robison

### Annapolis Area Christian School

Upper School  
109 Burns Crossing Road  
Severn, MD 21144  
(410) 519-5300  
[www.aacsonline.org](http://www.aacsonline.org)  
Grades: 9-12  
Tuition: \$12,628  
Contact: Drew Robison

### Antioch Christian School

1535 Ritchie Hwy.  
Arnold, MD 21012  
(410) 757-5000, ext. 109  
Grades: K-12  
Tuition: \$3,695-\$4,547  
Contact: Alice Wright

### Archbishop Spalding High School

8080 New Cut Road  
Severn, MD 21144  
(410) 969-9105, ext. 232  
[www.archbishopspalding.org](http://www.archbishopspalding.org)  
Grades: 9-12  
Tuition: \$12,695  
Contact: Thomas Miller, director of admissions

### Arnold Christian Academy

365 Jones Station Road  
Arnold, MD 21012  
(410) 544-1882  
[www.arnoldchristianacademy.org](http://www.arnoldchristianacademy.org)  
Grades: K-8  
Tuition: \$5,500  
Contact: Joan Harris, Mandi McClain

### Arundel Bay Christian Academy

968-C Lower Pindell Road  
Lothian, MD 20711  
(301) 952-0123  
[www.arundelbay.org](http://www.arundelbay.org)  
Grades: Preschool-8  
Tuition: \$5,856-\$9,552  
Contact: Tammie Hall, principal

### Book of Life Academy

913 Cedar Park Road  
Annapolis, MD 21401  
(410) 263-2600  
[www.bookoflifeacademy.com](http://www.bookoflifeacademy.com)  
Grades: Pre-K-5

### Calvary Baptist Church Academy

407 Marley Station Road  
Glen Burnie, MD 21060  
(410) 768-5306  
[www.cbcknights.org](http://www.cbcknights.org)  
Grades: Pre-K-12  
Tuition: \$2,980-\$5,600  
Contact: John Bandy

### Calvary Chapel Christian Academy

8064 New Cut Road  
Severn, MD 21144  
(410) 969-5101  
[www.cccaschool.com](http://www.cccaschool.com)  
Grades: K(4)-8  
Tuition: \$4,500  
Contact: Barbara Fridy

### Chesapeake Academy

1185 Baltimore-Annapolis Blvd.  
Arnold, MD 21012  
(410) 647-9612  
[www.chesapeakeacademy.com](http://www.chesapeakeacademy.com)  
Grades: Preschool-5  
Tuition: \$4,000-\$13,570  
Contact: Sue Richburg

### Chesapeake Montessori School

30 Old Mill Bottom Road North  
Annapolis, MD 21409  
(410) 757-4740  
[www.chesapeake-montessori.com](http://www.chesapeake-montessori.com)  
Ages: 15 months-12  
Enrollment: 130  
Tuition: \$8,800-\$11,400  
Contact: Megan Matthews

### Church on the Rock Christian Academy

649 Old Mill Road  
Millersville, MD 21108  
(410) 987-4744  
[www.mdcotr.org](http://www.mdcotr.org)  
Grades: Pre-K-12  
Tuition: \$3,400-\$5,000  
Contact: Sandra Bolin

### Eagle Cove School

5191 Mountain Road  
Pasadena, MD 21122  
(410) 255-5370  
[www.eaglecoveschool.org](http://www.eaglecoveschool.org)  
Grades: Pre-K-5  
Tuition: \$8,275-\$12,510  
Contact: Laura Kang

### Focus Point School

(for students with emotional disturbances)  
1211 Farm Road  
Crownsville, MD 21032  
(410) 729-5862 or (301) 562-9370

[www.kobainstitute.org](http://www.kobainstitute.org)  
Ages: 13-21  
Contact: Ford T. Johnson Jr.

### Friendship Seventh-day Adventist School

901 Andover Road  
Linthicum Heights, MD 21090  
(410) 859-9909  
[www.friendshipadventistschool.org](http://www.friendshipadventistschool.org)  
Grades: Pre-K(2)-8  
Contact: Mary Springer

### The Harbour School

(for students with learning disabilities, autism, speech impairments and other disabilities)  
1277 Green Holly Drive  
Annapolis, MD 21409  
(410) 974-4248  
[www.harbourschool.org](http://www.harbourschool.org)  
Grades: 1-12

### Indian Creek School Lower/Middle School

680 Evergreen Road  
Crownsville, MD 21032  
(410) 923-3660  
[www.indiancreekschool.com](http://www.indiancreekschool.com)  
Grades: Pre-K-8  
Tuition: \$15,735-\$19,910  
Contact: Tiffany McCormick

### Indian Creek School Upper School

1130 Anne Chambers Way  
Crownsville, MD 21032  
(410) 849-5170  
[www.indiancreekschool.com](http://www.indiancreekschool.com)  
Grades: 9-12  
Tuition: \$21,425-\$26,245  
Contact: Robin DePaolis

### The Key School

534 Hillsmere Drive  
Annapolis, MD 21403  
(410) 263-9231  
[www.keyschool.org](http://www.keyschool.org)  
Grades: Pre-K-12  
Tuition: \$12,250-\$23,950  
Contact: Jessie Dunleavy



860 Swift Road  
Pasadena, MD 21122  
(410) 437-3529  
[www.lsbcb.org/index.htm](http://www.lsbcb.org/index.htm)  
Grades: Pre-K-12

3112 Arundel on the Bay Road  
Annapolis, MD 21403  
(410) 263-8650  
<http://St.AnnesSchool.org/>  
Grades: Preschool-8  
Tuition: \$7,675-\$18,900  
Contact: Caroline Aras

120 Dorsey Road  
Glen Burnie, MD 21061  
(410) 766-7130  
[www.msladeschool.com](http://www.msladeschool.com)  
Grades: K-8  
Tuition: \$5,198-\$5,848

1641 N. Winchester Road  
Annapolis, MD 21409  
(410) 757-7789  
[www.montessoriiinternational.org](http://www.montessoriiinternational.org)  
Grades: Pre-K (18 months)-6  
Tuition: \$7,300-\$9,300  
Contact: Jean Burgess

74 Greenbury Point Road  
Annapolis, MD 21402  
(410) 757-3090  
<http://napschool.com>  
Grades: Preschool-5  
Contact: Melanie Pasiuk

8410 Piney Orchard Parkway  
Odenton, MD 21113  
(410) 674-5625  
[www.ocs1.org](http://www.ocs1.org)  
Grades: Pre-K-12  
Tuition: \$399-\$469/mo.

2601 Symphony Lane  
Gambrills, MD 21054  
(410) 519-2285  
[www.schooloftheincarnation.org](http://www.schooloftheincarnation.org)  
Grades: K-8  
Enrollment: 780  
Tuition: \$5,975-\$6,725  
Contact: Jennifer RaVell

201 Water St.  
Severna Park, MD 21146  
(410) 647-7700  
[www.severnschool.com](http://www.severnschool.com)  
Grades: 6-12  
Tuition: \$21,550  
Contact: Wanda Ned


4 Wallace Manor Road  
Edgewater, MD 21037

(for emotionally-disturbed students)  
3800 Frederick Ave.  
Baltimore, MD 21229  
(410) 233-1400  
Grades: 6-12  
Contact: Ed Ball

109 W. Melrose Ave.  
Baltimore, MD 21210  
(410) 323-8800  
[www.brynnawrschool.org](http://www.brynnawrschool.org)  
Grades: K-12, girls only; preschool, co-ed  
Tuition: \$23,200-\$24,600  
Preschool Tuition: \$12,410-\$23,320  
Contact: Talia Busby Titus (K-12), Pat  
Sheridan (preschool)

**BUILDING BOYS INTO MEN.  
MEN WHO MATTER.**

Since 1876, we've been dedicated to preparing  
young men for college and beyond.

**MOUNT  
SAINT  
JOSEPH**   
A Xaverian Brothers Sponsored School

**OPEN HOUSE**  
Sunday, November 6, 2011  
11 a.m. to 2 p.m.

4403 Frederick Avenue, Baltimore, MD 21229  
410.644.3300  
[www.msjet.edu](http://www.msjet.edu)



# Schools

Continued from page 7

## Calvary Lutheran School

2625 E. Northern Parkway  
Baltimore, MD 21214  
(410) 426-4302  
www.calvarylutheralschoolmd.org  
Grades: Pre-K-5  
Contact: Irene Jenkins

## Calvert School

Lower school:  
105 Tuscany Road  
Baltimore, MD 21210  
Middle school:  
4300 N. Charles St.  
Baltimore, MD 21218  
(410) 243-6054  
www.calvertschoolmd.org  
Grades: Pre-K-8  
Tuition: \$10,700-\$21,400  
Contact: Nicole H. Webster

## Cardinal Shehan School

5407 Loch Raven Blvd.  
Baltimore, MD 21239  
(410) 433-2775  
www.cardinalshehanschool.org  
Grades: Pre-K(3)-8  
Enrollment: 300  
Tuition: \$4,990  
Contact: Yulander Byrd

## The Catholic High School of Baltimore

2800 Edison Highway  
Baltimore, MD 21213

(410) 732-6200, ext. 216  
www.thecatholichighschool.org  
Grades: 9-12, girls only  
Tuition: \$10,700  
Contact: Brooke Sterrett

## Community Initiatives Academy

1001-5 N. Caroline St.  
Baltimore, MD 21205  
(410) 563-2818  
Grades: 1-12  
Contact: Annie Peet

## Cristo Rey Jesuit High School

420 S. Chester St.  
Baltimore, MD 21231  
(410) 727-3255  
www.cristoreybalt.org  
Grades: 9-12  
Tuition: \$2,500  
Contact: Patricia Hill

## Friends School of Baltimore

5114 N. Charles St.  
Baltimore, MD 21210  
(410) 649-3211  
www.friendsbalt.org  
Grades: Pre-K-12  
Tuition: \$19,610-\$22,735  
Contact: Karen Dates Dunmore

## Gateway School

(for students with speech, language or communication disabilities)  
5900 Metro Drive  
Baltimore, MD 21215  
(410) 318-6780  
www.hasa.org  
Ages: 3-12  
Contact: Jill Berie

## Gilman School

5407 Roland Ave.  
Baltimore, MD 21210  
(410) 323-3800  
www.gilman.edu  
Grades: K-12, boys only  
Tuition: \$19,900-\$24,340  
Contact: Allison Conner

## Good Shepherd Center

(Residential treatment services and therapeutic day school program for adolescents experiencing emotional and behavioral difficulties)  
4100 Maple Ave.  
Baltimore, MD 21227  
(410) 247-2770  
www.goodshepherdcenter.org  
Grades: 8-12  
Contact: Terri Schindler, admissions director

## The GreenMount School

501 W. 30th St.  
Baltimore, MD 21211  
(410) 235-6295  
www.greenmountschool.org  
Grades: K-8  
Enrollment: 100  
Tuition: \$8,550  
Contact: Elaine Doyle-Gillespie

## Holy Angels Catholic School

1201 S. Caton Ave.  
Baltimore, MD 21227  
(443) 602-3200  
www.hacschool.org  
Grades: Pre-K-8  
Tuition: \$5,000  
Contact: Kathleen Filippelli

## H.O.P.E. Academy

1808 Edison Hwy.  
Baltimore, MD 21213  
(410) 327-9020  
Grades: K-5  
Tuition: \$4,000  
Contact: Kimberly Evans-Douglas

## Institute of Notre Dame

901 Aisquith St.  
Baltimore, MD 21202  
(410) 522-7800  
www.indofmd.org  
Grades: 9-12, girls only  
Tuition: \$12,500  
Contact: Amy Hoey Only

## Kennedy Krieger Lower/Middle School

(for students with a range of disabilities)  
1750 E. Fairmount Ave.  
Baltimore, MD 21231  
(443) 923-4589  
www.kennedykrieger.org  
Grades: Pre-K-8  
Contact: Lynn Kanzler

## Liberty's Northwest Child Development Center

4013 Liberty Heights Ave.  
Baltimore, MD 21207  
(410) 367-7877  
Grades: K-1  
Tuition: \$180/week  
Contact: Audrey Ware or Latronya Ware

## Maryland School for the Blind

(for visually impaired students)  
3501 Taylor Ave.



**Success!**  
It starts with the right fit.

Educating students ages 3 to 21 with emotional disability or autism

## The Forbush Schools

### The Forbush School at Glyndon

407 Central Avenue  
410-517-5400

### The Forbush School at Hunt Valley

11201 Pepper Road  
410-527-9505

### The Forbush Therapeutic Preschool at Towson

6501 N. Charles Street  
410-938-4411

### The Forbush School at Westminster

1135 Business Parkway South, Gateway Park, Suite 50  
410-751-6026

### The Forbush School at Anne Arundel

648 Old Mill Road  
410-729-9181

www.forbushschool.org



## Why choose a Catholic school?



Catholic schools empower students to reach their full potential - spiritually, intellectually, physically, socially, and morally - through an academically excellent, Christ-centered education.

We invite you to learn more about our schools.

**95%** College Attendance Rate

**97%** High School Graduation Rate



Scan the QR Code in the QR Reader on your smart phone.

1.800.5CATHOLIC  
**www.archbalt.org**

  
**Catholic SCHOOLS**  
A PLACE TO GROW



Baltimore, MD 21236  
(410) 444-5000  
www.mdschblind.org  
Ages: Infants-21  
Contact: Linda Rosendall

#### **Mercy High School**

1300 E. Northern Parkway  
Baltimore, MD 21239  
(410) 433-8880  
www.mercyhighschool.com  
Grades: 9-12, girls only  
Tuition: \$11,550  
Contact: Jacqueline A. Stilling

#### **Mount St. Joseph High School**

4403 Frederick Ave.  
Baltimore, MD 21229  
(410) 644-3300  
www.msjet.edu  
Grades: 9-12, boys only  
Tuition: \$11,300  
Contact: Marc Hoffman

#### **Mt. Zion Baptist Christian School**

2000 E. Belvedere Ave.  
Baltimore, MD 21239  
(410) 426-2309

#### **New Foundations**

20 E. Franklin St.  
Baltimore, MD 21202  
(410) 576-8600  
Grades: 4-12  
Contact: Mark McLendon

#### **The Peabody Preparatory of Johns Hopkins University**

21 E. Mt. Vernon Place, First Floor

Baltimore, MD 21202  
(410) 234-4630  
www.peabody.jhu.edu/prep  
Ages: Infants to adults  
Contact: Donna M. Young

#### **Queen of Peace St. Katherine School**

1201 N. Rose St.  
Baltimore, MD 21213  
(410) 327-4738  
Grades: Pre-K-8  
Contact: Angela Calamari

#### **Roland Park Country School**

5204 Roland Ave.  
Baltimore, MD 21210  
(410) 323-5500  
www.rpcs.org  
Grades: K-12, girls only;  
Preschool, co-ed  
Tuition: \$14,000, preschool; \$23,335  
Contact: Peggy Wolf

#### **The School of the Cathedral of Mary Our Queen**

111 Amberly Way  
Baltimore, MD 21210  
(410) 464-4100  
www.schoolofthecathedral.org  
Grades: K-8  
Tuition: \$7,420-\$8,650  
Contact: John Moran

#### **Seton Keough High School**

1201 Caton Ave.  
Baltimore, MD 21227  
(410) 646-4444  
www.setonkeough.com

Grades: 9-12, girls only  
Tuition: \$10,800-\$12,800  
Contact: Danielle Moran

#### **The Shoshana S. Cardin School**

7310 Park Heights Ave.  
Baltimore, MD 21208  
(410) 585-1400  
www.shoshanascardin.org  
Grades: 9-12  
Tuition: \$17,500  
Contact: Barbie Prince

#### **St. Casimir Catholic School**

1035 S. Kenwood Ave.  
Baltimore, MD 21224  
(410) 342-2681  
www.stcasimirschool.us  
Grades: Pre-K-8  
Tuition: \$3,750-\$4,750  
Contact: Noreen Heffner

#### **St. Elizabeth School**

(for students with intellectual disabilities and orthopedic impairments, autism and autism spectrum disorders)  
801 Argonne Drive  
Baltimore, MD 21218  
(410) 889-5054  
www.stelizabeth-school.org  
Ages: 11-21  
Contact: Judy Malin

#### **St. Frances Academy**

501 E. Chase St.  
Baltimore, MD 21202  
(410) 539-5794  
www.sfacademy.org

Grades: 9-12  
Tuition: \$9,000  
Contact: Sister John Francis Schilling

#### **St. Francis of Assisi School**

3617 Harford Road  
Baltimore, MD 21218  
(410) 467-1683  
www.sfa-school.org  
Grades: Pre-K-8  
Tuition: \$5,177-\$5,930  
Contact: Carol Will

#### **St. Ignatius Loyola Academy**

740 N. Calvert St.  
Baltimore, MD 21202  
(410) 539-8268  
www.saintignatius.org  
Grades: 6-8, boys only  
Contact: Teresa Scott

#### **St. Thomas Aquinas**

3710 Roland Ave.  
Baltimore, MD 21211  
(410) 889-4618  
www.stthomasaquinasschool.us  
Grades: Pre-K-8  
Tuition: \$5,000-\$6,000  
Contact: Sister Marie Rose

#### **Unsel'd's School**

250 S. Hilton St.  
Baltimore, MD 21229  
(410) 947-1110  
Grades: Preschool-8  
Contact: Connie Unsel'd

SEE **SCHOOLS** PAGE 10



**SMART... COMPASSIONATE... GLOBAL**

HEAR WHAT WE HAVE TO SAY AT OUR

**FALL OPEN HOUSE**

**NOVEMBER 5, 2011 12-3 PM**

FOR MORE INFORMATION, CALL 410.433.8880



**MERCY  
HIGH SCHOOL**

1300 EAST NORTHERN PKWY, BALTIMORE MARYLAND 21239

WWW.MERCYHIGHSCHOOL.COM



**THE PEABODY  
PREPARATORY'S  
FALL SEMESTER OF  
INSTRUCTION  
FOR ALL AGES  
STARTS WEDNESDAY  
SEPTEMBER 7**

Early childhood classes, dance, and instruction in a variety of orchestral instruments, guitar, voice, and piano are offered at the Preparatory's main campus in historic Mount Vernon and the Towson campus on Dulaney Valley Road.



## Schools

Continued from page 9

### Waldorf School of Baltimore

4801 Tamarind Road  
Baltimore, MD 21209  
(410) 367-6808  
www.waldorfschoolofbaltimore.org  
Grades: Preschool-12  
Tuition: \$7,000-\$19,100  
Contact: Pat Whitehead

### Wilkes School at Grace & St. Peter's

707 Park Ave.  
Baltimore, MD 21201  
(410) 539-1395  
www.wilkesschool.org  
Grades: 3-5  
Tuition: \$12,475  
Contact: Nancy DeBell

### Woodbourne Day School

(for emotionally disabled students)  
1301 Woodbourne Ave.  
Baltimore, MD 21239  
(410) 433-1000  
www.woodbourne.org  
Grades: 6-12, boys only

### Zion Christian Middle School

4915 Holder Ave.  
Baltimore, MD 21214  
(410) 444-9267  
www.zcms.zionbaptistchurchmd.org  
Grades: 6-8  
Tuition: \$5,000  
Contact: Geraldine H. Hill

## Baltimore County

### Al-Rahmah School

6631 Johnnycake Road  
Baltimore, MD 21244  
(410) 719-0921  
http://alrahmah.org  
Grades: K-9  
Tuition: \$3,900-\$5,200

### Apple Ridge Montessori School

200 Ingleside Ave.  
Catonsville, MD 21228  
(410) 818-2000  
www.appleridgemontessori.org  
Grades: Preschool-1  
Tuition: \$4,700-\$7,400  
Contact: Sue Eustis

### Apple Tree Children's Center

221 Old Padonia Road  
Cockeysville, MD 21030  
(410) 560-0611  
www.appletreecenter.com  
Grades: K-1

### Arlington Baptist School

3030 N. Rolling Road  
Baltimore, MD 21244  
(410) 655-9300  
www.arlingtonbaptistschool.org  
Grades: K(3)-12  
Tuition: \$3,670-\$6,100  
Contact: LeAnn Peterson

### Bais Hamedrash and Mesivta of Baltimore

6823 Old Pimlico Road  
Baltimore, MD 21209

(410) 486-0006  
Grades: 9-12

### Bais Yaakov School for Girls Elementary School

11111 Park Heights Ave.  
Owings Mills, MD 21117  
(410) 363-3300  
www.baisyaakov.net  
Grades: Preschool-5, girls only  
Contact: Rabbi Zalman Nissel

### Bais Yaakov School for Girls Middle School

6300 Smith Ave.  
Baltimore, MD 21209  
(410) 486-0411  
www.baisyaakov.net  
Grades: 6-8, girls only  
Contact: Rabbi Zalman Nissel

### Bais Yaakov School for Girls High School

6302 Smith Ave.  
Baltimore, MD 21209  
(443) 548-7700  
www.baisyaakov.net  
Grades: 9-12, girls only  
Contact: Rabbi Zalman Nissel

### Baltimore Actors' Theatre Conservatory

300 Dumbarton Road  
Baltimore, MD 21212  
(410) 337-8519  
www.baltimoreactorstheatre.org/academy.html  
Grades: K-12

### Baltimore Lutheran School

1145 Concordia Drive  
Towson, MD 21286  
(410) 825-2323  
www.baltimorelutheran.org  
Grades: 6-12  
Tuition: \$9,454-\$10,521  
Contact: Ruth Heilman

### Baltimore White Marsh Christian School

7427 Rossville Blvd.  
Rosedale, MD 21237  
(410) 663-1819  
www.bwmschool.org  
Grades: K-8  
Tuition: \$435-\$450/month  
Contact: Heather Hastick

### Beth Tfiloh Dahan Community School

3300 Old Court Road  
Baltimore, MD 21208  
(410) 486-1905  
www.bethfiloh.com  
Grades: Pre-K-12  
Tuition: \$13,550-\$17,700  
Contact: Laurie Kott

### Calvert Hall College High School

8102 La Salle Road  
Baltimore, MD 21286  
(410) 825-4266  
www.calverthall.com  
Grades: 9-12, boys only  
Tuition: \$11,900;  
\$19,300, La Salle program  
Contact: Chris Bengel

If communication difficulties are a child's primary barrier to progress in other areas, Gateway School is an excellent place for him or her to grow.



Gateway School, a program of The Hearing and Speech Agency, is a nonpublic school for children ages 3 - 12 with communication disorders related to hearing loss, autism or other conditions. Our highly qualified professionals have an excellent track record of helping children overcome barriers to language and communication—and greatly expanding their possibilities for better social and academic development.



THE HEARING AND  
SPEECH AGENCY  
www.hasa.org

For more information or  
to arrange a tour, call  
410-318-6780  
or visit [www.hasa.org](http://www.hasa.org)

## CAPTURING THE HEARTS & MINDS OF CHILDREN



**OPEN HOUSE: WEDNESDAY NOV. 2 9:00 - 11:00 AM**

A classical, Christ-centered, co-educational community of learners, existing to educate the hearts and minds of K-8 children through hands-on learning and meaningful experiences. Our integral approach ties all the subjects together through common themes, forming strong connections and deep roots in the minds of our students. Cambridge students graduate with a firm foundation of character, skills, and knowledge and are well-equipped to proceed to high school and beyond.

410-486-3686 | [CambridgeSchool.org](http://CambridgeSchool.org) | [hjordan@cambridgeschool.org](mailto:hjordan@cambridgeschool.org)





**Cambridge School**

110 Sudbrook Lane  
Pikesville, MD 21208  
(410) 486-8792  
www.cambridgeschool.org  
Grades: K-8  
Tuition: \$7,100-\$9,700  
Contact: Heather Jordan

**Colonial Christian Academy**

9411 Liberty Road  
Randallstown, MD 21133  
(410) 521-7191  
www.colonialca.org  
Grades: K-6  
Contact: Antoinette Murray

**The Day School at  
Baltimore Hebrew**

7401 Park Heights Ave.  
Baltimore, MD 21208  
(410) 764-1867  
www.thedayschoolbh.org  
Grades: pre-K (18 months)-8  
Tuition: \$8,000-\$16,400  
Contact: Gerri Chizeck

**Dayspring Christian Academy**

2122 W. Joppa Road  
Lutherville, MD 21093  
(410) 821-5876  
www.mydayspringchristian.com  
Grades: K-8  
Tuition: \$2,000-\$6,500  
Contact: Judi Hengst

**Emmanuel Lutheran School**

929 Ingleside Ave.  
Baltimore, MD 21228  
(410) 744-0015  
www.elsbaltimore.org  
Grades: K-8  
Tuition: \$5,100-\$5,900  
Contact: Del Riemer

**Forbush School**

(for students with complex needs;  
multiple area locations)  
407 Central Ave.  
Reisterstown, MD 21136  
(410) 517-5400  
www.forbushschool.org  
Grades: Preschool-12  
Contact: Jim Truscello

**Free State Montessori School**

12536 Harford Road  
P.O. Box 179  
Fork, MD 21051  
(410) 592-3324  
www.freestatemontessori.org  
Grades: Preschool-6  
Contact: Anya Karp

**Garrison Forest School**

300 Garrison Forest Road  
Owings Mills, MD 21117  
(410) 559-3110  
www.gfs.org  
Grades: 3's-12, day; 8-12, boarding; co-  
ed preschool; girls only, pre-1st-12  
Tuition: \$4,650-\$23,990, day;  
\$34,600-\$43,860, boarding  
Contact: Leslie Tinati

**Grace Bible Baptist  
Christian School**

1518 N. Rolling Road  
Baltimore, MD 21228  
(410) 788-6132  
www.gracebiblebaptist.org  
Grades: K-12

**The Hannah More School**

(for autistic or emotionally or learning  
disabled students)  
12039 Reisterstown Road  
Reisterstown, MD 21136  
(410) 526-5000  
www.hannahmore.org  
Grades: 5-12  
Contact: Carolyn Martin,  
admissions director

**The Harbour School**

(for students with learning disabilities,  
autism, speech impairments and other  
disabilities)  
11251 Dolfield Blvd.  
Owings Mills, MD 21117  
(443) 394-3760  
www.harbourschool.org  
Grades: 1-12

**Immaculate Conception School**

112 Ware Ave.  
Towson, MD 21204  
(410) 427-4800  
www.theimmaculate.org  
Grades: Pre-K-8  
Tuition: \$1,960-\$6,540  
Contact: Deborah Thomas

**Immaculate Heart of Mary**

8501 Loch Raven Blvd.  
Towson, MD 21286  
(410) 668-8466  
www.immaculateheartofmary.com  
Grades: Pre-K-8  
Tuition: \$4,420-\$5,760  
Contact: Amy Belz

**Israel Henry Beren High School**

400 Mt. Wilson Lane  
Baltimore, MD 21208  
(410) 484-7200  
Grades: 9-12  
Contact: Rabbi Joseph Tendler

**The Jemicy School**

**Lower & Middle School**

(for dyslexia or other related language-  
based learning differences)  
11 Celadon Road  
Owings Mills, MD 21117  
(410) 653-2700  
www.jemicyschool.org  
Grades: 1-8  
Enrollment: 175  
Tuition: \$29,500  
Contact: Patricia Utz

**The Jemicy School  
Upper School**

(for dyslexia or other related  
language-based learning differences)  
11202 Garrison Forest Road  
Owings Mills, MD 21117  
(410) 653-2700  
www.jemicyschool.org  
Grades: 9-12 and Upper School  
Prep Program  
Enrollment: 120  
Tuition: \$30,750  
Contact: Patricia Utz

**John Paul Regional Catholic  
School**

6946 Dogwood Road  
Woodlawn, MD 21244  
(410) 944-0367  
www.jpccs.org  
Grades: Preschool-8  
Tuition: \$5,500  
Contact: Jayne Pohl

**Kennedy Krieger High School  
Career and Technology Program**

(for students with a range of  
disabilities)  
3825 Greenspring Ave.  
Baltimore, MD 21211  
(443) 923-7800  
www.kennedykrieger.org  
Ages: 14-21  
Contact: Patrick Seay

**Krieger Schechter Day School**

8100 Stevenson Road  
Baltimore, MD 21208  
(410) 486-8640  
www.ksds.edu  
Grades: K-8  
Enrollment: 467  
Tuition: \$15,890-\$17,235  
Contact: Ilene Wise

**Lamb of God School**

1810 Fairview Ave.  
Baltimore, MD 21227  
(410) 242-4100  
www.lambofgodschool.org

Grades: K-8

Tuition: \$3,920-\$6,370

Contact: Diane Felts

**Liberty Christian School**

11303 Liberty Road  
Owings Mills, MD 21117  
(410) 655-5527  
www.libertychristian.us  
Grades: K-8  
Tuition: \$4,212-\$6,948  
Contact: Steven Kennedy

**Loyola Blakefield**

500 Chestnut Ave.  
Towson, MD 21204  
(410) 823-0601  
www.loyolablakefield.org  
Grades: 6-12, boys only  
Tuition: \$16,845  
Contact: Michael Breschi

**Maryvale Preparatory School**

11300 Falls Road  
Brooklandville, MD 21022  
(410) 252-3366  
www.maryvale.com  
Grades: 6-12, girls only  
Tuition: \$15,415  
Contact: Monica Graham

**McDonogh School**

8600 McDonogh Road  
Owings Mills, MD 21117  
(410) 581-4719  
www.mcdonogh.org  
Grades: K-12  
Enrollment: 1,296  
Tuition: \$21,800-\$24,250;  
\$32,600, boarding  
Contact: Anita Hilson

**Montessori Manor**

3526 Sweet Air Road  
Phoenix, MD 21131  
(410) 683-1771  
www.montessorimanor.com  
Grades: K-3  
Tuition: \$3,860-\$7,595  
Contact: Cheri Isles

**The Montessori School**

10807 Tony Drive  
Lutherville, MD 21093  
(410) 321-8555  
www.montessorischool.net  
Grades: Preschool-8  
Tuition: \$7,500-\$15,750  
Contact: Beth Callahan

SEE **SCHOOLS** PAGE 12



Inspiring the best in every boy.

IT STARTS AT **THE BOYS' LATIN** SCHOOL OF MARYLAND

**OPEN HOUSE - October 23**



11am in the Iglehart Center Grades K–12, Parents & Students

For more information, please call 410.377.5192 x1137 or email admissions@boyslatinmd.com

822 West Lake Avenue Baltimore, MD 21210 [www.boyslatinmd.com](http://www.boyslatinmd.com)



**2011-2012  
Gerstell Academy Open House Schedule**

Come and see for yourself all that Gerstell Academy has to offer. Gerstell Academy is the only leadership school in the area for students in Pre-Kindergarten through Grade 12. Located on 250 acres of beautiful countryside, the values based curriculum provides college preparatory academics, physical training and competitive athletics, modern language fluency, as well as significant opportunities in art and music.

**Call 410-861-4400 to schedule a private tour today.**

2500 Old Westminster Pike, Finksburg, MD 21048  
[www.gerstell.org](http://www.gerstell.org)

**Tuesday, October 11th**  
10:00 a.m.

**Sunday, October 30th**  
2:00 p.m.

**Wednesday, November 2nd**  
10:00 a.m.

**Sunday, November 13th**  
2:00 p.m.

**Wednesday, November 30th**  
10:00 a.m.



## Schools

Continued from page 11

### Mount de Sales Academy

700 Academy Road  
Catonsville, MD 21228  
(410) 744-8498  
www.mountdesales.org  
Grades: 9-12, girls only  
Tuition: \$11,300  
Contact: Claire Cohagan

### Mount Pleasant Christian School

6000 Radecke Ave.  
Baltimore, MD 21206  
(410) 325-3080  
www.mpcsonline.org  
Grades: Pre-K(4)-8  
Tuition: \$4,190-\$4,500  
Contact: Brenda Haynes

### The New Mark of Excellence School

2605 N. Rolling Road, Suite 401  
Windsor Mill, MD 21244  
(410) 594-0745  
www.newmarkofexcellence.com  
Grades: Nursery 2- Grade 12  
Tuition: \$5,300  
Contact: Beverly Davis

### New Monarch Scholastic Academy

11639 Red Run Blvd.  
Reisterstown, MD 21136  
(410) 526-2573  
Contact: Maxine Taylor

### Notre Dame Preparatory School

815 Hampton Lane  
Towson, MD 21286  
(410) 825-6202  
www.notredameprep.com  
Grades: 6-12, girls only  
Enrollment: 770  
Tuition: \$16,300  
Contact: Katherine Goetz

### The Odyssey School

(for dyslexia and language-based learning differences)  
3257 Bridle Ridge Lane  
Stevenson, MD 21153  
(410) 580-5551  
www.theodysseyschool.org  
Grades: K-8  
Enrollment: 159  
Tuition: \$27,900  
Contact: Martha Nesbitt-Dewey

### Oldfields School

1500 Glencoe Road  
Sparks Glencoe, MD 21152  
(410) 472-4800  
www.OldfieldsSchool.org  
Grades: 8-12, girls only  
Tuition: \$21,650-\$27,400, day;  
\$42,950-\$44,700, boarding  
Contact: Cory Jackson, director of day admission

### Open Bible Christian Academy

13 Open Bible Way  
Kingsville, Maryland 21087  
(410) 593-9940  
www.obschool.org  
Grades: Pre-K-12

Tuition: \$4,000-\$5,000  
Contact: William Trautman

### Our Lady of Grace School

18310 Middletown Road  
Parkton, MD 21120  
(410) 329-6956  
www.olgs.org  
Grades: Preschool-8  
Tuition: \$2,420-\$6,540  
Contact: Byrdie Ricketts

### Our Lady of Hope St. Luke School

8003 N. Boundary Road  
Dundalk, MD 21222  
(410) 288-2793  
www.olhsl.com  
Grades: Pre-K-8  
Enrollment: 239  
Tuition: \$2,604-\$5,596  
Contact: Sister Irene Pryle

### Our Lady of Mt. Carmel School

1704 Old Eastern Ave.  
Baltimore, MD 21221  
(410) 238-1163  
www.olmcmd.org  
Grades: Pre-K-12  
Tuition: \$1,930-\$10,712  
Contact: Laura Cummins

### Our Lady of Victory School

4416 Wilkens Ave.  
Baltimore, MD 21229  
(410) 242-3688  
www.olvschoolmd.org  
Grades: Pre-K-8  
Tuition: \$4,550-\$5,600  
Contact: Thomas Riddle

### The Park School

2425 Old Court Road  
Baltimore, MD 21208  
(410) 339-7070  
www.parkschool.net  
Grades: Pre-K-12  
Tuition: \$23,990-\$24,470  
Contact: Megan Ford

### Perry Hall Christian School

3919 Schroeder Ave.  
Perry Hall, MD 21128  
(410) 256-4886  
www.phcsweb.org  
Grades: Preschool-12  
Tuition: \$1,404-\$5,949  
Contact: Nancy Melhorn

### Pilgrim Christian Day School

7200 Liberty Road  
Baltimore, MD 21207  
(410) 484-9240  
www.lutheransonline.com/pilgrim  
Grades: Pre-K-5  
Tuition: \$4,725  
Contact: Samuel Pettijohn

### Redeemer Classical Christian School

6415 Mt. Vista Road  
Kingsville, MD 21087  
(410) 592-9625  
www.rccs.org  
Grades: Pre-K-12  
Enrollment: 320  
Tuition: \$1,515-\$7,370  
Contact: Deborah Glasgow (grammar school); Pam Doyle (7-12)



**HIGH SCHOOL OPEN HOUSE**  
Tuesday, October 25  
6:00-9:00 p.m.

**Our Lady of Mt. Carmel School**

**Our Lady of Mt. Carmel is proud to announce open enrollment for Pre-K to 12**

"One School, One Community"

**410-238-1163**  
**www.olmcmd.org**  
1704 Old Eastern Avenue, Baltimore, MD 21221

- Competitive Athletic Programs
- Instrumental and Choral Music programs
- Quality Catholic education
- Financial aid available
- Bus service

**Catholic SCHOOLS**  
ARCHDIOCESE OF BALTIMORE  
A PLACE TO GROW

## Explore all that The Highlands School has to offer!

### OPEN HOUSE DATES:

Oct., 27, 2011 (7 p.m.), Nov. 17, 2011 (7 p.m.),  
Jan. 11, 2012 (7 p.m.), Feb. 9, 2012 (7 p.m.)



- Full academic program specializing in teaching children Kindergarten – 8th grade with dyslexia and ADHD.
- Unique teaching environment includes an individualized approach, low student/teacher ratio and small group instruction in reading and math.

**THE HIGHLANDS**  
SCHOOL, INC.  
at the James T. and Virginia M. Dresher Campus

2409 Creswell Road | Bel Air, MD 21015  
(410) 836-1415 | [info@highlandsschool.net](mailto:info@highlandsschool.net)  
[WWW.HIGHLANDSSCHOOL.NET](http://WWW.HIGHLANDSSCHOOL.NET)

**A child who learns differently needs to be taught differently**



**Relay Children’s Center**  
1620 S. Rolling Road  
Baltimore, MD 21227  
(410) 247-2811  
[www.relaychildrenscenter.com](http://www.relaychildrenscenter.com)  
Grades: Preschool-7  
Contact: Elizabeth Vinton

**Sacred Heart School**  
63 Sacred Heart Lane  
Glyndon, MD 21071  
(410) 833-0857  
[www.shgschool.org](http://www.shgschool.org)  
Grades: Pre-K-8  
Tuition: \$1,500-\$7,995  
Contact: Jeanne Cossentino

**Sisters Academy of Baltimore**  
139 First Ave.  
Baltimore, MD 21227  
(410) 242-1212  
<http://sistersacademy.org>  
Grades: 5-8, girls only  
Contact: Sister Delia Dowling

**St. Agnes School**  
603 St. Agnes Lane  
Catonsville, MD 21229  
(410) 747-4070  
[www.stagnesschool.net](http://www.stagnesschool.net)  
Grades: Preschool-8  
Tuition: \$1,150-\$6,270  
Contact: Susan Banks

**St. Ambrose School**  
4506 Park Heights Ave.  
Baltimore, MD 21215  
(410) 664-2373  
[www.saintambrose.com/school](http://www.saintambrose.com/school)

Grades: K-8  
Tuition: \$4,700

**St. Clement Mary Hofbauer**  
1216 Chesaco Ave.  
Rosedale, MD 21237  
(410) 686-3316  
[www.stclemmh.org](http://www.stclemmh.org)  
Grades: Pre-K-8  
Tuition: \$1,400-\$5,250  
Contact: Mary Bellone

**St. James Academy**  
3100 Monkton Road  
Monkton, MD 21111  
(410) 329-3292  
[www.saintjamesacademy.org](http://www.saintjamesacademy.org)  
Grades: K-8  
Tuition: \$9,900-\$15,100  
Contact: Dianne Fowler

**St. John the Evangelist School**  
13311 Long Green Pike  
Hydes, MD 21082  
(410) 592-9585  
[www.stjohnhydes.org](http://www.stjohnhydes.org)  
Grades: Pre-K-8  
Tuition: \$2,455-\$6,570  
Contact: Jean Delcher

**St. Joseph School, Cockeysville**  
105 Church Lane  
Cockeysville, MD 21030  
(410) 683-0600  
[www.sjpmd.org/Home/St.\\_Joseph\\_School](http://www.sjpmd.org/Home/St._Joseph_School)  
Grades: K-8  
Tuition: \$5,400-\$5,600  
Contact: Sister Anne O'Donnell

**St. Joseph School, Fullerton**  
8416 Belair Road  
Baltimore, MD 21236  
(410) 256-8026  
[www.stjoeschool.org](http://www.stjoeschool.org)  
Grades: Pre-K-8  
Tuition: \$1,975-\$6,050  
Contact: Phyllis Karko

**St. Mark School**  
26 Melvin Ave.  
Catonsville, MD 21228  
(410) 744-6560  
[www.stmark-school.org](http://www.stmark-school.org)  
Grades: Preschool-8  
Tuition: \$2,805-\$5,613  
Contact: Mary Morrison

**St. Michael the Archangel School**  
10 Willow Ave.  
Baltimore, MD 21206  
(410) 668-8797  
[www.smoverlea.org/school](http://www.smoverlea.org/school)  
Grades: Pre-K-8  
Tuition: \$4,895-\$5,445  
Contact: Patricia Kelly

**St. Paul Lutheran School**  
2001 Old Frederick Road  
Catonsville, MD 21228  
(410) 747-1924  
<http://school.stpaulcatonsville.org>  
Grades: Pre 2-4, K-5  
Tuition: \$2,850-\$8,000  
Contact: Timothy Gabbert

**St. Paul’s Lutheran School**  
12022 Jerusalem Road  
Kingsville, MD 21087  
(410) 592-8100  
<http://stpaulseagles.org>

**St. Paul’s School**  
11152 Falls Road  
Brooklandville, MD 21022  
(410) 825-4400  
[www.stpaulsschool.org](http://www.stpaulsschool.org)  
Grades: K-4, coed; 5-12, boys only  
Enrollment: 851  
Tuition: \$19,250-\$22,520  
Contact: Amy Hall Furlong

**St. Paul’s School for Girls**  
11232 Falls Road  
Brooklandville, MD 21022  
(443) 632-1046  
[www.spsfg.org](http://www.spsfg.org)  
Grades: 5-12, girls only  
Tuition: \$22,950, upper;  
\$21,950, middle  
Contact: Susan Hasler

**St. Peter’s Christian Day School**  
7910 Belair Road  
Baltimore, MD 21236  
(410) 665-4521  
[www.st-peters.com](http://www.st-peters.com)  
Grades: Pre-K(4)-5  
Tuition: \$4,250  
Contact: Carole Hengen

**St. Pius X School**  
6432 York Road  
Baltimore, MD 21212  
(410) 427-7400  
<http://stpious10school.org>  
Grades: Pre-K-8  
Tuition: \$5,150-\$5,850  
Contact: Maggie Dates

SEE **SCHOOLS** PAGE 14

THE BRYN MAWR SCHOOL  
GREAT MINDS. STRONG HEARTS. BOLD VOICES.

“Beyond college, beyond law school, beyond all other challenges and experiences that pushed me to become better in some way than I started, it has always been my Bryn Mawr that is my touchstone, that is the whisper in my ear to be bold though I feel meek; to be unafraid though I am scared.”

JULIE R. RUBIN '91

THE EXCELLENCE OF A BRYN MAWR  
EDUCATION AWAITS YOUR DAUGHTER.  
JOIN US TO LEARN MORE.

BRYN MAWR’S FALL VISITING DAYS

SEPTEMBER - NOVEMBER

[www.brynmawrschool.org/fvd](http://www.brynmawrschool.org/fvd)  
or 410-323-8800 x1232



## Schools

Continued from page 13

### St. Stephen School

8028 Bradshaw Road  
Bradshaw, MD 21087  
(410) 592-7617  
www.ssschool.org  
Grades: Pre-K-8  
Tuition: \$1,544-\$5,476  
Contact: Mary Patrick

### St. Timothy's School

8400 Greenspring Ave.  
Stevenson, MD 21153  
(410) 486-7401  
www.stt.org  
Grades: 9-12, girls only  
Tuition: \$26,300, day;  
\$45,200, boarding  
Contact: Deborah Haskins

### St. Ursula School

8900 Harford Road  
Parkville, MD 21234  
(410) 665-3533  
www.stursula.org  
Grades: K-8  
Tuition: \$2,460-\$5,245  
Contact: Sister Joan Kelly

### Talmudical Academy of Baltimore

4445 Old Court Road  
Baltimore, MD 21208  
(410) 484-6600  
www.talmudicalacademy.org  
Grades: Preschool-12, boys only  
Contact: B. Rosen (preschool), Rabbi  
N. Kahana (elementary), Rabbi Y.

Schwartz (middle), Rabbi S. Steinberg  
(high)

### Torah Institute of Baltimore

35 Rosewood Lane  
Owings Mills, MD 21117  
(410) 654-3500  
www.torahinstitute.org  
Grades: Preschool-8, boys only  
Contact: Yaakov Goldstein

### Trellis School

(for students with autism and  
language impairment)  
102 Lakefront Drive  
Hunt Valley, MD 21030  
(410) 785-3845  
www.trellisservices.com  
Grades: Preschool-2  
Contact: Josselyn Ensor

### UCP Delrey School

(for students with orthopedic  
disabilities, feeding issues and  
sensory integration concerns)  
3610 Commerce Drive, Suite 804-807  
Baltimore, MD 21227  
(410) 314-5000  
www.delreyschool.org  
Ages: 2-21  
Contact: Mimi Wang or Dorothy  
Lemon-Thompson

### Willow Park Academy

2914 N. Rolling Road  
Baltimore, MD 21244  
(410) 277-9354  
www.willowparkacademy  
schools.com  
Grades: K-4  
Contact: Van Speights

### Youth in Transition School

(for students with emotional distur-  
bance, mental retardation or autism)  
7205 Rutherford Road  
Baltimore, MD 21244  
(410) 944-9994  
www.ncianet.org  
Ages: 11-21  
Contact: Larry G. Norris

## Calvert County

### The Calverton School

300 Calverton School Road  
Huntingtown, MD 20639  
(410) 535-0216  
www.calvertonschool.org  
Grades: Preschool-12  
Tuition: \$8,788-\$18,308  
Contact: Holly Lee

### The Tidewater School

120 Cox Road  
Huntingtown, MD 20639  
(410) 257-0533  
www.thetidewaterschool.org  
Grades: Preschool-5  
Tuition: \$7,020-\$11,755  
Contact: Nancy Libertini

## Carroll County

### Carroll Lutheran School

1738 Old Taneytown Road  
Westminster, MD 21158  
(410) 848-1050

www.carrolllutheralschool.org  
Grades: K-8  
Tuition: \$4,970-\$5,390  
Contact: Amy Hackett

### Faith Christian School

30 N. Cranberry Road  
Westminster, MD 21157  
(410) 848-8875  
www.faith-christian-school.com  
Grades: Pre-K-12  
Tuition: \$1,690-\$5,750  
Contact: Sandy Smith

### Friendship School

1545 Progress Way  
Eldersburg, MD 21784  
(410) 552-6880  
www.friendshipschool.org  
Grades: 1-8  
Tuition: \$28,098  
Contact: Teresa Ankney

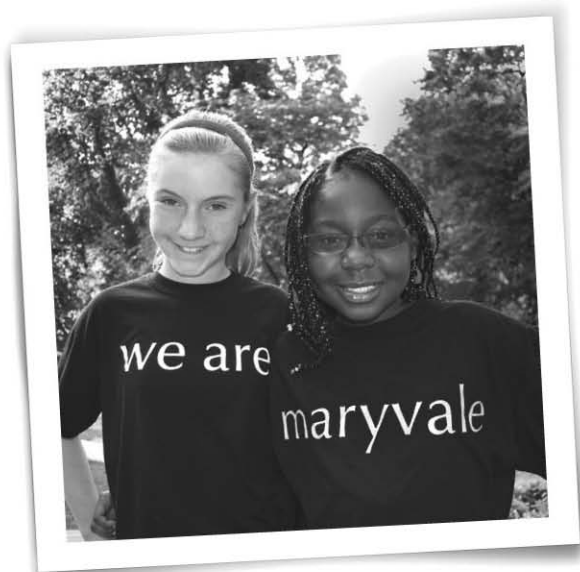
### Gerstell Academy

2500 Old Westminster Pike  
Finksburg, MD 21048  
(410) 861-3000  
www.gerstell.org  
Grades: Pre-K-12  
Contact: Mary Louque

### The Montessori School of Westminster

1055 Montessori Drive  
Westminster, MD 21158  
(410) 848-6283  
www.montessorischoolofwestminster.org  
Ages: 2-15  
Tuition: \$4,875-\$9,475  
Contact: Liv Sutherland

**OPEN HOUSE**  
Saturday, October 8, 2011  
10 a.m. to 1 p.m.



## MARYVALE PREPARATORY SCHOOL

- Academically challenging environment
- New humanities hall and auditorium
- School-wide iPad® program
- New turf field, track and practice fields
- Financial aid options
- County transportation options

11300 Falls Road ▪ Brooklandville, MD 21022  
410-252-3366 ▪ www.maryvale.com



**NATIONAL AQUARIUM.**  
BALTIMORE, MD

**NOW SHOWING!**



October 22  
10 a.m.-2 p.m.

Meet Nickelodeon's Dora at the  
National Aquarium!

**Purchase tickets today at [aqua.org](http://aqua.org)**

**PRICES  
DIVE,  
FRIDAYS  
AFTER FIVE**

**\$8 Admission after 5 p.m.**





**North Carroll Community School**

531 Old Westminster Pike, Suite 100  
Westminster, MD 21157  
(410) 386-0655  
www.nccschool.info  
Grades: K-8  
Tuition: \$6,100  
Contact: Scot Lynn

**St. Stephen's Classical Christian Academy**

2275 Liberty Road  
Eldersburg, MD 21784  
(410) 795-1249  
http://web.mac.com/mommavitek/Site\_3/Home.html  
Grades: Pre-K-12  
Tuition: \$1,950-\$4,900

**Cecil County****The Elijah School**

245 Old Zion Road  
North East, MD 21901  
(410) 658-2244  
http://elijahschool.com  
Grades: 6-12  
Tuition: \$12,000  
Contact: Richard Starr

**Mount Aviat Academy**

399 Childs Road  
Childs, MD 21916  
(410) 398-2206  
www.mountaviat.org  
Grades: Preschool-8  
Contact: Connie Lucatamo

**The Tome School**

581 S. Maryland Ave.  
North East, MD 21901  
(410) 287-2050  
www.tomeschool.org  
Grades: K-12  
Tuition: \$4,025-\$6,700  
Contact: Elizabeth Wohner

**West Nottingham Academy**

1079 Firetower Road  
Colora, MD 21917  
(410) 658-5556  
www.wna.org  
Grades: 9-12  
Enrollment: 130  
Tuition: \$16,050, day;  
\$40,750, boarding  
Contact: Jesse Roberts

**Charles County****Annie's Early Learning Center**

6420 Trust Place, Route 231  
Hughesville, MD 20637  
(301) 274-9500  
www.annieselc.com  
Ages: 6 weeks-12  
Contact: Jaime Ryce

**The Beddow School**

(high school listing: see Prince George's County)  
6008 Hampshire Circle  
Waldorf, MD 20603  
(301) 870-8660  
www.thebeddowschool.org  
Ages: Preschool-6  
Tuition: \$6,080-\$8,672

**Grace Christian Academy of Maryland**

13000 Zekiah Drive  
Waldorf, MD 20601  
(301) 645-0406

www.graceknights.org

Grades: pre-K(3)-12  
Tuition: \$2,330-\$7,598  
Contact: Wayne Knode

**Frederick County****The Banner School**

1730 N. Market St.  
Frederick, MD 21701  
(301) 695-9320  
www.bannerschool.org  
Grades: Preschool-8  
Tuition: \$5,725-\$11,450  
Contact: Lauren Webb

**Frederick Academy of the Visitation**

200 E. Second St.  
Frederick, MD 21701  
(301) 662-2814  
www.thevisitationacademy.org  
Grades: Pre-K(3)-8, girls only  
Tuition: \$4,380-\$7,300  
Contact: Carol Guaccero

**Friends Meeting School**

3232 Green Valley Road  
Ijamsville, MD 21754  
(301) 798-0288  
www.friendsmeetingschool.org  
Grades: Pre-K-11  
Tuition: \$5,550-\$15,200  
Contact: Kim Mulhern

**The Jefferson School**

(for behavioral and developmental learning differences; multiple area locations)  
2940 Point of Rocks Road  
Jefferson, MD 21755  
(240) 315-0200  
www.thejeffersonschool.org  
Grades: 6-12  
Enrollment: 110  
Tuition: Funded by Medicaid  
Contact: Meghan Jancuck

**Lucy School**

9117 Frostown Road  
Middletown, MD 21769  
(301) 293-1163  
www.lucyschool.com  
Grades: K-2  
Tuition: \$1,100-\$9,500

**Mother Seton School**

100 Creamery Road  
Emmitsburg, MD 21727  
(301) 447-3161  
www.mothersetonschool.org  
Grades: Pre-K-8  
Tuition: \$2,895-\$4,595  
Contact: JoAnne Goecke

**St. John Regional Catholic School**

8414 Opossumtown Pike  
Frederick, MD 21702  
(301) 662-6722  
www.sjracs.org  
Grades: Pre-K-8  
Tuition: \$4,000-\$8,265  
Contact: Karen O'Boyle

**St. John's Catholic Prep**

889 Butterfly Lane  
Frederick, MD 21703  
(301) 662-4210  
www.saintjohnsprep.org  
Grades: 9-12  
Tuition: \$12,995  
Contact: Michael Schultz

# AMAZING

vs. The Same Old Thing

## SAINT JAMES SCHOOL



**301-733-9330**  
**www.stjames.edu**



ST. JAMES, MARYLAND







BETH TFILOH



MAXIMILIAN FRANZ



MAXIMILIAN FRANZ

## Schools

Continued from page 15

### St. Thomas More Academy

3989 Buckeystown Pike  
P.O. Box 879  
Buckeystown, MD 21717  
(301) 874-9014  
[www.stmamd.org](http://www.stmamd.org)  
Grades: Pre-K-8; before and after-school care  
Tuition: \$6,625  
Contact: Marge Lyburn

### Trinity School of Frederick

6040 New Design Road  
Frederick, MD 21703  
(301) 228-2333  
[www.trinityschooloffrederick.org](http://www.trinityschooloffrederick.org)  
Grades: K-8  
Tuition: \$9,900  
Contact: Barbara Cartwright

## Harford County

### Advent Lutheran Elementary School

2230 Rock Spring Road

Forest Hill, MD 21050  
(410) 838-4892  
[www.adventluth.com](http://www.adventluth.com)  
Grades: K-5  
Tuition: \$5,400  
Contact: Paul Bickel

### Awakening Child Montessori

2529 Conowingo Road  
Bel Air, MD 21015  
(410) 836-0833  
[www.awakeningchild.com](http://www.awakeningchild.com)  
Grades: Preschool-1  
Tuition: \$3,300-\$5,500  
Contact: Gaye Novak

### Bel Forest Christian Academy

603 Vale Road  
Bel Air, MD 21014  
(410) 838-6074  
[www.bfchristianacademy.org](http://www.bfchristianacademy.org)  
Grades: Preschool-8  
Tuition: \$1,800-\$5,225  
Contact: William Rivers

### Harford Christian School

1736 Whiteford Road  
Darlington, MD 21034  
(410) 457-5103  
[www.harfordchristian.org](http://www.harfordchristian.org)  
Grades: Pre-K-12  
Tuition: \$1,900-\$5,700  
Contact: Bryan Wilson

### Harford Day School

715 Moores Mill Road  
Bel Air, MD 21014  
(410) 838-4848  
[www.harfordday.org](http://www.harfordday.org)  
Grades: Pre-K-8  
Tuition: \$13,250  
Contact: Ellen Kelly

### Harford Friends School

708 Highland Road  
P.O. Box 200  
Street, MD 21154  
(410) 452-5507  
[www.harfordfriends.org](http://www.harfordfriends.org)  
Grades: K-8  
Tuition: \$5,600-\$11,385  
Contact: Jonathan Huxtable

### The Highlands School

(for dyslexia, ADHD and other language-based learning differences)  
2409 Creswell Road  
Bel Air, MD 21015  
(410) 836-1415  
[www.highlandsschool.net](http://www.highlandsschool.net)  
Grades: K-8  
Contact: Beth Maahs-Hoagberg

### The John Carroll School

703 Churchville Road  
Bel Air, MD 21014

(410) 879-2480  
[www.johncarroll.org](http://www.johncarroll.org)  
Grades: 9-12  
Enrollment: 735  
Tuition: \$13,700  
Contact: Jesse Roberts or Kim Brueggemann

### Legacy High School

603 Vale Road  
Bel Air, MD 21014  
(410) 838-1502  
[www.legacyhs.org](http://www.legacyhs.org)  
Grades: 9-12  
Tuition: \$8,500  
Contact: Terry Cieslak

### Mountain Christian School

1824 Mountain Road  
Joppa, MD 21085  
(410) 877-7333  
[www.mountainchristianschool.info](http://www.mountainchristianschool.info)  
Grades: K-8  
Tuition: \$6,000-6,300  
Contact: Deborah Imhoff

### New Covenant Christian School

128 St. Mary's Church Road  
Abingdon, MD 21009  
(443) 512-0771  
<http://school.ncpres.org>  
Grades: Preschool-12



## OPEN HOUSES

All 9:00 — 11:00 a.m.

|               |              |
|---------------|--------------|
| Tues, Oct. 18 | Fri, Dec. 2  |
| Sat, Nov. 5   | Fri, Jan. 6  |
| Tues, Nov. 15 | Sat, Jan. 21 |

*One minute inside the beltway!*

## Friends Community School

*Progressive Quaker Education ~ K — 8*

5901 Westchester Park Drive  
College Park, MD 20740

Tel: 301-441-2100  
Fax: 301-441-2105

[www.friendscommunityschool.org](http://www.friendscommunityschool.org)

small classes — individual attention — dynamic teachers  
experiential learning — rich curriculum — green campus — camps

*Life-long learners, courageous risk-takers, & joyous peacemakers*

## Visit Roland Park



Open House  
October 16 - 1:30 pm  
Educating Girls K-12, coed Preschool

[www.rpcs.org](http://www.rpcs.org)





Tuition: \$1,200-\$5,900  
Contact: Karen Bloom

**St. Joan of Arc School**  
230 S. Law St.  
Aberdeen, MD 21001  
(410) 272-1387  
www.stjoanarc.org/school.html  
Grades: K-8  
Tuition: \$4,950-\$6,350  
Contact: Kathy Ruth

**St. Margaret School Elementary**  
205 Hickory Ave.  
Bel Air, MD 21014  
(410) 879-1113  
www.smsch.org  
Grades: Pre-K-5  
Tuition: \$1,641-\$8,728  
Contact: Cecilia Pleiss

**St. Margaret School Middle**  
1716A Churchville Road  
Bel Air, MD 21015  
(410) 877-9660  
www.smsch.org  
Grades: 6-8  
Tuition: \$5,177-\$8,728  
Contact: Cecilia Pleiss

**Trinity Lutheran Church School**  
1100 Philadelphia Road  
Joppa, MD 21085  
(410) 679-4000  
www.tlsonline.org  
Grades: Pre-K-8  
Enrollment: 395  
Tuition: \$350-\$386/week  
Contact: Bev Reed

Howard County

**Bethel Christian Academy Preschool & Lower**  
8455 Savage Guilford Road  
Savage, MD 20763  
(301) 725-4673  
www.bethelchristianacademy.com  
Grades: Pre-K-4  
Tuition: \$5,000-\$6,200  
Contact: Alice Green

**Bethel Christian Academy Middle**  
9001 Vollmerhausen Road  
Jessup, MD 20794  
(301) 490-7451  
www.bethelchristianacademy.com  
Grades: 5-8

Tuition: \$6,400-\$6,700  
Contact: Alice Green

**Bright Stars Learning Academy**  
5890 Cedar Lane  
Columbia, MD 21044  
(410) 730-5234  
www.brightstarslearningacademy.com  
Grades: Pre-K-1  
Tuition: \$375-\$450/two weeks

**Brookfield Christian School**  
6347 Ten Oaks Road  
Clarksville, MD 21029  
(410) 531-9443  
www.brookfieldchristianschool.com  
Grades: Preschool-1  
Contact: Barbara Gibson

**Chapelgate Christian Academy**  
2600 Marriottsville Road  
Marriottsville, MD 21104  
(410) 442-5888  
www.chapelgateacademy.org  
Grades: 6-12  
Tuition: \$6,040-\$9,500  
Contact: Linda Cassell

**Children’s Manor Montessori School**  
(multiple area locations)  
4465 Montgomery Road  
Ellicott City, MD 21043  
(410) 461-6070  
www.childrensmanormontessori.com  
Grades: Preschool-5  
Tuition: \$615-\$900/month  
Contact: Pradip K. Ghosh

**Columbia Academy**  
(multiple area locations)  
10380 Old Columbia Road  
Columbia, MD 21046  
(410) 312-9790  
www.columbiaacademy.com  
Grades: Pre-K-8  
Tuition: \$8,400-\$9,650  
Contact: Gail Jordan

**Columbia Montessori School**  
10508 Marble Faun Court  
Columbia, MD 21044  
(410) 772-8353  
www.columbiamontessori.com  
Grades: Preschool-1  
Tuition: \$4,845-\$8,645  
Contact: Maria Garcia

**Cornerstone Academy**  
17455 Old Frederick Road  
Mt. Airy, MD 21771  
(410) 489-5775  
www.csag.us

Grades: 6-12  
Tuition: \$17,301-\$18,375  
Contact: Martha Zeher

**Crossroads Adventist Preparatory School**  
3291 St. John Lane  
Ellicott City, MD 21042  
(866) 715-7752  
www.crossroadsadventist.org  
Grades: Pre-K-8  
Tuition: \$5,200-\$6,773  
Contact: Jaqueline Farquharson

**Gan Israel Day School**  
770 Howes Lane  
Columbia, MD 21044  
(410) 740-2424  
www.ganisraelhowardcounty.org  
Grades: Pre-K-4  
Contact: Connie Baron

**Glenelg Country School**  
12793 Folly Quarter Road  
Ellicott City, MD 21042  
(410) 531-8600  
www.glenelg.org  
Grades: Pre-K(3)-12  
Tuition: \$7,600-\$23,460  
Contact: Karen Wootton

**Glenwood Country Day School Preschool**  
14785 Bushy Park Road  
Woodbine, MD 21797  
(410) 489-5203  
www.glenwoodcountrydayschool.com  
Grades: Preschool (2)-K  
Contact: Barbara Cade

**Glenwood Country Day School Elementary and Middle**  
1615 Old Frederick Road  
Mount Airy, MD 21771  
(410) 489-6959  
Grades: 1-8  
Tuition: \$11,900  
Contact: Cheryl Stradling

**High Road Academy**  
(for students with learning disabilities)  
9705 Washington Blvd.  
Laurel, MD 20723  
(301) 483-8605  
www.highroadacademy.net  
Grades: 4-12  
Contact: Matt Cooper

**The Julia Brown Montessori Schools**  
(multiple area locations)  
9450 Madison Ave.  
Laurel, MD 20723

(301) 498-0604  
www.juliabrownmontessorischools.com  
Grades: Pre-K-3  
Contact: Administrator

**Love of Learning Montessori School**  
9151 Rumsey Road  
Columbia, MD 21045  
(410) 715-9600  
www.lolms.com  
Grades: Preschool-6  
Enrollment: 200  
Tuition: \$10,000-\$15,500  
Contact: Awilda Torres

**Mt. Airy Christian Academy**  
16700 Old Frederick Road  
Mt. Airy, MD 21771  
(410) 489-4321  
Grades: K-12  
http://mabcmd.org/maca  
Contact: Vicky Webster

**Norbel School**  
6135 Old Washington Road  
Elkridge, MD 21075  
(410) 796-6700  
www.norbelschool.org  
Grades: 1-12  
Tuition: \$22,175-\$23,875  
Contact: Frank Pugliese

**Our Lady of Perpetual Help School**  
4801 Ilchester Road  
Ellicott City, MD 21043  
(410) 744-4251  
www.olphschool.org  
Grades: Pre-K-8  
Enrollment: 235  
Tuition: \$6,400  
Contact: Rose Goeres

**Resurrection-St. Paul School**  
3155 Paulskirk Drive  
Ellicott City, MD 21042  
(410) 461-9111, ext. 241  
www.resstpaul.org  
Grades: Pre-K-8  
Enrollment: 517  
Tuition: \$3,450-\$9,000  
Contact: Karen Murphy

**St. Augustine School**  
5990 Old Washington Road  
Elkridge, MD 21075  
(410) 796-3040  
www.staug-md.org  
Grades: Pre-K-8  
Enrollment: 310  
Tuition: \$4,650-\$5,450, K-8; \$1,725-\$3,835, preschool  
Contact: Patricia Schratz (preschool); Sherry Mobley (K-8)

SEE SCHOOLS PAGE 18



*The Catholic High School of Baltimore* | Empowering Women to Make a Difference

**VISIT. LEARN. BELONG.**

Visit our **Fall Open House** on **Saturday, November 5**  
9:30 - 11:30 a.m.

*A Quality College Preparatory Education in the Franciscan Tradition Since 1939*

2800 Edison Hwy | Baltimore, MD 21213 | 410.732.6200  
www.thecatholichighschool.org





**BaltimoreLutheran**  
SCHOOL

**Enrich the Mind.  
Empower the Spirit.  
Embrace the opportunity!**




**FALL OPEN HOUSE**

SATURDAY, NOVEMBER 5 10 AM — 1 PM

COLLEGE-PREPARATORY CURRICULUM  
IN GRADES 6-12

**1145 Concordia Drive • Towson, MD 21286**  
**410-825-2323 • www.baltimorelutheran.org**



"Educating the Whole Child" since 1966

**BOWIE MONTESSORI CHILDREN'S HOUSE**

TODDLER & PRIMARY PROGRAMS AGES 2-6

ELEMENTARY & JR. HIGH PROGRAMS GRADES 1-8

EXTENDED DAY CARE

AMI Teachers  
22-Acre Wooded Campus  
Promoting independence, a sense of order, and life skills needed for children to reach their full potential.

**5004 Randonstone Lane, Bowie, MD**  
**301-262-3566**  
**www.bmch.net**

**FREE STATE**  
MONTESSORI SCHOOL

12536 Harford Rd. / Fork, MD 21051 / 410-592-3324



Saturday Toddler Classes Begin  
**September 24th!**  
410-592-3324

*Photo Credit: Tony Strauss*

**Fall Open House Dates**  
*Nov 20 / 1-3 pm Jan 19 / 6-8 pm*

**www.freestatemontessori.org**



## Schools

Continued from page 17

### St. John's Parish Day School

9130 Frederick Road  
Ellicott City, MD 21042  
(410) 465-7644  
www.stjohnspds.org  
Grades: Early childhood-Grade 5  
Tuition: \$2,950-\$10,700  
Contact: Jane Tolen

### Temple Isaiah Supplementary School

12200 Scaggsville Road  
Fulton, MD 20759  
(301) 317-1101  
www.templeisaiah.org  
Grades: Pre-K-12  
Contact: Margaret Gold

### Trinity School

4985 Ilchester Road  
Ellicott City, MD 21043  
(410) 744-1524  
www.trinityschoolmd.org  
Grades: Pre-K-8  
Tuition: \$3,300-\$11,995  
Contact: Joan Voshell

## Kent County

### Kent School

6788 Wilkins Lane  
Chestertown, MD 21620  
(410) 778-4100

www.kentschool.org  
Grades: Pre-K-8  
Tuition: \$3,100-\$12,980  
Contact: Beth Collins

### The Radcliffe Creek School

(for students with dyslexia and other learning challenges)  
201 Talbot Blvd.  
Chestertown, MD 21620  
(410) 778-8150  
www.radcliffecreekschool.org  
Grades: Pre-K-8

## Montgomery County

### Academy of the Child

19711 Waters Road  
Germantown, MD 20874  
(301) 601-0991  
www.academyofthechild.com  
Grades: Preschool-6  
Tuition: \$7,680-\$9,300  
Contact: Michele Hutchinson

### Academy of the Holy Cross

4920 Strathmore Ave.  
Kensington, MD 20895  
(301) 942-2100  
www.academyoftheholycross.org  
Grades: 9-12, girls only  
Enrollment: 555  
Tuition: \$16,800  
Contact: Louise Hendon

### The Avalon School

200 W. Diamond Ave.  
Gaithersburg, MD 20877

(301) 320-0668  
www.avalonschools.org  
Grades: 2-12, boys only  
Tuition: \$10,950-\$13,000  
Contact: Kevin Davern

### The Barnesville School

21830 Peach Tree Road  
Barnesville, MD 20838  
(301) 972-0341  
www.barnesvilleschool.org  
Grades: Preschool-8  
Tuition: \$1,145-\$17,530  
Contact: Georganna Glen

### Barrie School

13500 Layhill Road  
Silver Spring, MD 20906  
(301) 576-2800  
www.barrie.org  
Grades: Pre-K-12  
Tuition: \$11,985-\$24,565  
Contact: Andrea Williams

### Brookewood School

10401 Armory Ave.  
Kensington, MD 20895  
(301) 949-7997  
www.brookewood.org  
Grades: 1-12, girls only  
Tuition: \$10,000, grades 1-5; \$11,250, grades 6-12  
Contact: Charmie C. Vince

### Bullis School

10601 Falls Road  
Potomac, MD 20854  
(301) 299-8500  
www.bullis.org  
Grades: 3-12

Tuition: \$27,340-\$30,495  
Contact: Tim Simpson

### Butler School

15951 Germantown Road  
Darnestown, MD 20874  
(301) 977-6600  
www.butlerschool.org  
Grades: re-K-8  
Tuition: \$9,350-\$13,335  
Contact: Diana Jellett

### Charles E. Smith Jewish Day School

Lower School  
1901 E. Jefferson St.  
Rockville, MD 20852  
(301) 881-1400  
www.cesjds.org  
Grades: K-6  
Tuition: \$19,510  
Contact: Susan Cohen

### Charles E. Smith Jewish Day School

Upper School  
11710 Hunters Lane  
Rockville, MD 20852  
(301) 881-1400  
www.cesjds.org  
Grades: 7-12  
Tuition: \$25,040  
Contact: Robin Shapiro

### Chelsea School

(for language-based learning differences)  
711 Pershing Drive  
Silver Spring, MD 20910  
(301) 585-1430



# CHOOSE THE RIGHT SCHOOL FOR YOUR CHILD.

In a Christian environment SJA students experience a vigorous academic program coupled with strong athletics, performing and visual arts, and world languages. Small class size allows teachers to cultivate individual student gifts and develop a strong bond with students and parents that often lasts a lifetime.

SJA awards the Elizabeth I. Legenhausen half scholarship to one new student annually.

Find out if we are the right school for your child.

**CALL 410.329.3292**

**TO SCHEDULE A TOUR.**





www.chelseaschool.edu  
 Grades: 5-12  
 Tuition: \$35,610  
 Contact: Deborah Lourie

#### The Children's Learning Center

4511 Bestor Drive  
 Rockville, MD 20853  
 (301) 871-6600  
 www.clcmd.org  
 Grades: Infant-5  
 Tuition: \$6,850-\$17,750  
 Contact: Dottie Harris

#### Christ Episcopal School

109 S. Washington St.  
 Rockville, MD 20850  
 (301) 424-6550  
 www.ces-rockville.org  
 Grades: Preschool-8  
 Tuition: \$1,427-\$14,450  
 Contact: Vicki Hart

#### Concord Hill School

6050 Wisconsin Ave.  
 Chevy Chase, MD 20815  
 (301) 654-2626  
 www.concordhill.org  
 Grades: Preschool-3  
 Enrollment: 100  
 Tuition: \$14,675-\$22,038  
 Contact: Susan Arzt

#### Connelly School of the Holy Child

9029 Bradley Blvd.  
 Potomac, MD 20854  
 (301) 365-0955  
 www.holychild.org  
 Grades: 6-12, girls only  
 Tuition: \$21,350-\$22,850  
 Contact: Meg Mayo

#### The Diener School

(for students with learning disabilities, language and sensory processing disorders, attention challenges, executive functioning issues and social pragmatic delays)  
 11510 Falls Road  
 Potomac, MD 20854  
 (301) 299-4602  
 www.TheDienerSchool.org  
 Grades: Pre-K-6  
 Contact: Lois McCabe

#### Evergreen School

10700 Georgia Ave.  
 Wheaton, MD 20902  
 (301) 942-5979  
 www.evergreenschool.com  
 Grades: Preschool-3  
 Tuition: \$9,370-\$14,450  
 Contact: Marcia Jacques

#### Executive Child Development Center

(serving employees of NIH)  
 6006 Executive Blvd.  
 Rockville, MD 20852  
 (301) 496-9411  
 Grades: Preschool-1

#### Faith Arts Academy

13618 Layhill Road  
 Silver Spring, MD 20906  
 (301) 438-2012  
 Grades: K-8  
 Contact: Dominique Harris

#### Fourth Presbyterian School

10701 S. Glen Road  
 Potomac, MD 20854  
 (301) 765-8133  
 www.fourthschool.org  
 Grades: Pre-K-8  
 Tuition: \$7,900-\$15,900  
 Contact: Karen Janes

#### The Frost School

(for students with autism or emotional troubles)  
 4915 Aspen Hill Road  
 Rockville, MD 20853  
 (301) 933-3452  
 www.frostcenter.com  
 Grades: 1-12  
 Contact: Chris Eacho

#### Georgetown Hill Early Childhood Center

(multiple area locations)  
 8311 Bells Mill Road  
 Potomac, MD 20854  
 (301) 299-7360  
 www.georgetownhill.com  
 Grades: Preschool-2  
 Tuition: \$925-\$1,185/month  
 Contact: Joyce Zier

#### Georgetown Preparatory School

10900 Rockville Pike  
 North Bethesda, MD 20852  
 (301) 214-1215  
 www.gprep.org  
 Grades: 9-12, boys only  
 Tuition: \$28,215, day;  
 \$48,160, boarding  
 Contact: Brian J. Gilbert

#### German School

8617 Chateau Drive  
 Potomac, MD 20854  
 (301) 365-4400  
 www.dswashington.org  
 Grades: Preschool-12  
 Tuition: \$3,280-\$12,800  
 Contact: Julia Merck-Rocha

#### Grace Episcopal Day School

(two campuses)  
 9115 Georgia Ave.  
 Silver Spring, MD 20910  
 (301) 585-3513  
 www.geds.org  
 Grades: Preschool-8  
 Tuition: \$18,401-\$18,635  
 Contact: Courtney Hundley

#### Green Acres School

11701 Danville Drive  
 Rockville, MD 20852  
 (301) 881-4100  
 www.greenacres.org  
 Grades: Pre-K-8  
 Tuition: \$28,855  
 Contact: Susan Friend

#### Griggs International Academy

(offers distance-learning services)  
 12501 Old Columbia Pike  
 Silver Spring, MD 20904  
 (301) 680-6570  
 Grades: Pre-K-12  
 Tuition: \$325/semester hour

#### The Harbor School

7701 Bradley Blvd.  
 Bethesda, MD 20817  
 (301) 365-1100  
 www.theharborschool.org  
 Grades: Pre-K(3)-Grade 2  
 Tuition: \$9,975-\$18,260  
 Contact: Steven Greisdorf

#### Hebrew Day Institute

2200 Baltimore Road  
 Rockville, MD 20851  
 (240) 399-6100  
 www.hebrewdayinstitute.org  
 Grades: K-6  
 Tuition: \$13,500-\$17,500  
 Contact: Renee Salzberg

# I Went to Public Middle School and Was Afraid I'd Be Lost in High School.



# I Chose Cardin.

Why? Cardin isn't a big school. It's small, on purpose. Cardin encourages questioning, exploring, and discussion, over rote memorization. And Cardin integrates Jewish values into a college preparatory curriculum.



**The Shoshana S. Cardin School**  
*Baltimore's Independent Jewish High School*  
 Above all, learning.

7310 Park Heights Avenue • Baltimore, MD 21208-5436  
 (410) 585-1400 • [www.shoshanascardin.org](http://www.shoshanascardin.org)



# Schools

Continued from page 19

### The Heights School

10400 Seven Locks Road  
Potomac, MD 20854  
(301) 365-4300  
www.heights.edu  
Grades: 3-12  
Tuition: \$14,885-\$19,800  
Contact: Rich Moss

### The Holton-Arms School

7303 River Road  
Bethesda, MD 20817  
(301) 365-5300  
www.holton-arms.edu  
Grades: 3-12, girls only  
Tuition: \$30,957-\$32,388  
Contact: Leslie Nelson

### Jamon Montessori Day School

52 Randolph Road  
Silver Spring, MD 20904  
(301) 384-3131  
www.jamonmontessori.com  
Grades: Preschool-1  
Tuition: \$8,250-\$8,400  
Contact: Lisa Miller

### John Nevins Andrews School

117 Elm Ave.  
Takoma Park, MD 20912  
(301) 270-1400  
www.jna.org  
Grades: Pre-K-8  
Tuition: \$4,250-\$7,900  
Contact: Maria Armenta

### The Julia Brown Montessori Schools

(multiple area locations)  
1300 Milestone Drive  
Silver Spring, MD 20904  
(301) 622-7808  
www.juliabrownmontessorischools.com  
Grades: Pre-K-3  
Contact: Julia Brown

### Kemp Mill Montessori School

120 Claybrook Drive  
Silver Spring, MD 20902  
(301) 593-4343  
http://kehillatmontessori.org  
Grades: Preschool-6  
Contact: Karen Gejdenson

### Landon School for Boys

6101 Wilson Lane  
Bethesda, MD 20817

(301) 320-3200  
www.landon.net  
Grades: 3-12, boys only  
Tuition: \$29,935-\$31,027  
Contact: Chris Predmore

### Lone Oak Montessori School

(multiple area locations)  
10201 Democracy Blvd.  
Potomac, MD 20854  
(301) 469-4888  
www.loneoakmontessori.com  
Grades: Preschool-6  
Tuition: \$3,810-\$10,852  
Contact: Eleanor Harris

### Lycée Rochambeau French International School Nursery

7108 Bradley Blvd.  
Bethesda, MD 20817  
(301) 767-1683  
www.rochambeau.org  
Grades: Pre-Nursery, Nursery and K  
Tuition: \$15,918  
Contact: Agnes Finucan

### Lycée Rochambeau French International School Lower School

3200 Woodbine St.  
Chevy Chase, MD 20815  
(301) 907-3265  
www.rochambeau.org  
Grades: Preschool-4  
Tuition: \$14,183-\$15,918  
Contact: Agnes Finucan

### Lycée Rochambeau French International School Upper School

9600 Forest Road  
Bethesda, MD 20814  
(301) 530-8260  
www.rochambeau.org  
Grades: 4-12  
Tuition: \$14,183-\$18,820  
Contact: Agnes Finucan

### The Manor Montessori School

(multiple area locations)  
10500 Oaklyn Drive  
Potomac, MD 20854  
(301) 299-7400  
www.manormontessori.com  
Grades: Preschool-3  
Contact: Katherine Damico

### The Mater Amoris School

18501 Mink Hollow Road  
Ashton, MD 20861  
(301) 774-7468  
www.materamoris.com

Grades: Preschool-6  
Tuition: \$8,500-\$11,500  
Contact: Charlotte Shea

### Mater Dei School

9600 Seven Locks Road  
Bethesda, MD 20817  
(301) 365-2700  
www.materdeischool.net  
Grades: 1-8, boys only  
Tuition: \$14,200  
Contact: Edward Williams

### McLean School of Maryland

8224 Lochinver Lane  
Potomac, MD 20854  
(301) 299-8277  
www.mcleanschool.org  
Grades: K-12  
Tuition: \$25,775-\$31,150  
Contact: Judy Jankowski

### Melvin J. Berman Hebrew Academy

13300 Arctic Ave.  
Rockville, MD 20853  
(301) 962-9400  
www.mjbha.org  
Grades: Preschool-12  
Enrollment: 700  
Tuition: \$4,550-\$20,250  
Contact: Sharon Butler

### Montrose Christian School

5100 Randolph Road  
Rockville, MD 20852  
(301) 770-5335  
www.montrosecchristian.org  
Grades: K-12  
Tuition: \$9,500-\$10,700  
Contact: Stephanie Waller

### Muslim Community School

7917 Montrose Road  
Potomac, MD 20854  
(301) 340-6713  
www.mymcs.org  
Grades: Preschool-12  
Tuition: \$3,900-\$5,900  
Contact: Janice Nahidian

### The Nora School

955 Sligo Ave.  
Silver Spring, MD 20910  
(301) 495-6672  
www.nora-school.org  
Grades: 9-12  
Tuition: \$23,650  
Contact: Janette Patterson

### The Norwood School

8821 River Road  
Bethesda, MD 20817

(301) 841-2130  
www.norwoodschool.org  
Grades: K-8  
Tuition: \$25,530-\$27,190  
Contact: Mimi Mulligan

### Oneness-Family School

6701 Wisconsin Ave.  
Chevy Chase, MD 20815  
(301) 652-7751  
www.onenessfamily.org  
Grades: Age 2-Grade 8  
Tuition: \$10,850-\$20,750  
Contact: Andrew Kutt

### Our Lady of Good Counsel High School

17301 Old Vic Blvd.  
Olney, MD 20832  
(240) 283-3200  
www.olgchs.org  
Grades: 9-12  
Tuition: \$16,550  
Contact: Kevin Collins

### Paint Branch Montessori School

10309 New Hampshire Ave.  
Silver Spring, MD 20903  
(301) 434-0373  
www.pbmontessori.com  
Grades: Preschool-6  
Tuition: \$10,899-\$13,840  
Contact: Rebecca A. Guyot

### The Primary Day School

7300 River Road  
Bethesda, MD 20817  
(301) 365-4355  
www.theprimarydayschool.org  
Grades: Pre-K-2  
Tuition: \$16,500-\$19,500  
Contact: Julie McCaffery

### The Primary Montessori Day School

14138 Travilah Road  
Rockville, MD 20850  
(301) 309-9532  
www.primarymontessori.com  
Grades: Preschool-2  
Tuition: \$1,953-\$13,950

### Quality Care Nursery & Day School

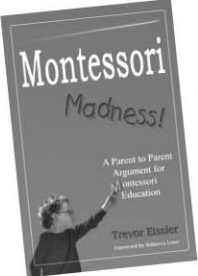
8041 Cessna Ave., #232  
Gaithersburg, MD 20879  
(301) 519-8775  
http://qualitycareearlylearningservices.com  
Grades: Preschool-1  
Tuition: \$175-\$275/week

## EDUCATION FOR LIFE...

- Certified Montessori teachers
- Outstanding Montessori curriculum
- Nurturing learning environment
- Beautiful rural setting • Convenient location

### Open Houses

Toddler/Primary: Sept. 15 & Oct. 6, 9:15 a.m.  
Elementary/Middle School:  
Oct. 13 & Nov. 10, 9:00 a.m.



**Trevor Eissler**  
Author of  
“Montessori Madness!”  
September 27 at 7 p.m.

**Tickets: \$15.00**  
MontessoriSchool.net  
410-321-8555, ext. 116

*The first 100 tickets purchased includes  
a complimentary copy of the book!*

### The Montessori School


(Toddlers–Grade 6)  
**Emerson Farm  
Middle School**  
(Grades 7 & 8)

Falls & Greenspring Valley Rds.,  
Lutherville, Md.  
MontessoriSchool.net  
410-321-8555

Explore a world of ideas  
while building a strong foundation!

# The Wilkes School

— at Grace and St. Peter’s



Age 3 · Grade 5  
410-539-1395  
www.wilkesschool.org



**Quality Time Early Learning Center**

8101 Georgia Ave.  
Silver Spring, MD 20910  
(301) 588-3350  
www.qtelc.com  
Grades: K-2  
Contact: Richard Crump

**Redwood Montessori Academy**

1605 Viers Mill Road  
Rockville, MD 20851  
(301) 762-2524  
www.redwoodmontessorimd.com  
Grades: Pre-K(2)-Grade 3  
Tuition: \$7,245-\$13,770  
Contact: Dianna Souder

**Sandy Spring Friends School**

16923 Norwood Road  
Sandy Spring, MD 20860  
(301) 774-7455  
www.ssfs.org  
Grades: Pre-K-12; boarding, 9-12  
Tuition: \$19,900-\$27,500;  
boarding \$40,500-\$50,700  
Contact: Yasmin McGinnis

**Seneca Academy**

15601 Germantown Road  
Darnestown, MD 20874  
(301) 869-3728  
www.SenecaAcademy.org  
Grades: Preschool-6  
Tuition: \$2,470-\$10,450  
Contact: Jennifer Serenyi

**The Siena School**

9727 Georgia Ave.  
Silver Spring, MD 20910

(301) 592-0567  
www.thesienaschool.org  
Grades: 4-12  
Tuition: \$29,000-\$32,000  
Contact: Bekah Atkinson

**Sligo Adventist School**

8300 Carroll Ave.  
Takoma Park, MD 20912  
(301) 434-1417  
www.sligoadventistschool.org  
Grades: K-8  
Tuition: \$4,250-\$7,900  
Contact: Brenda Peace

**St. Andrew's Episcopal School Lower School**

10033 River Road  
Potomac, MD 20854  
(301) 983-5200  
www.saes.org  
Grades: Preschool-3  
Tuition: \$6,150-\$19,990  
Contact: Spring Swinehart

**St. Andrew's Episcopal School Intermediate, Middle & Upper School**

8804 Postoak Road  
Potomac, MD 20854  
(301) 983-5200  
www.saes.org  
Grades: 4-12  
Tuition: \$24,500-\$32,345  
Contact: Julie Jameson

**St. John's Episcopal School**

3427 Olney Laytonsville Road  
Olney, MD 20832  
(301) 774-6804

http://stjes.org  
Grades: Preschool-8  
Tuition: \$8,500-\$16,300  
Contact: Mark Woodson

**Stone Ridge School of the Sacred Heart**

9101 Rockville Pike  
Bethesda, MD 20814  
(301) 657-4322, ext. 321  
www.stoneridgeschool.org  
Grades: Pre-K and K, coed;  
1-12, girls only  
Tuition: \$20,250-\$25,200  
Contact: Mary Burke Tobias

**Sulam School**

(for children with special learning needs)  
13300 Arctic Ave.  
Rockville, MD 20853  
(301) 962-9400, ext. 5523  
www.sulam.org  
Grades: K-8

**Takoma Academy**

8120 Carroll Ave.  
Takoma Park, MD 20912  
(301) 434-4700  
www.ta.edu  
Grades: 9-12  
Tuition: \$14,050  
Contact: David Daniels

**Thomas Jefferson Preparatory School**

12801 Darnestown Road  
Darnestown, MD 20878  
(301) 330-7550  
www.tjprep.org

Grades: Pre-K-8  
Tuition: \$8,200-\$13,500  
Contact: Z. Harabatch

**Torah School of Greater Washington**

2010 Linden Lane  
Silver Spring, MD 20910  
(301) 962-8003  
www.tsgw.org  
Grades: K-6  
Tuition: \$11,440-\$12,190  
Contact: Rabbi Hershel Lutch

**Village Montessori School**

20301 Fulks Farm Road  
Montgomery Village, MD 20886  
(301) 977-5766  
www.villagemontessorimd.com  
Grades: Preschool-2  
Tuition: \$7,120-\$11,130  
Contact: Laura Kerwin

**Walden Montessori Academy**

7730 Bradley Blvd.  
Bethesda, MD 20817  
(301) 469-8123  
Grades: Preschool-1

**Washington Christian Academy**

16227 Batchellors Forest Road  
Olney, MD 20832  
(240) 390-0429  
www.washingtonchristian.org  
Grades: K-12  
Tuition: \$6,999-\$16,898  
Contact: Karen Fleming

SEE **SCHOOLS** PAGE 22

# Learning together.

**Beth Tfiloh** is school.

It's community. It's home.

It's where our friends are. When we're  
at BT we know who we are. **For more  
information about your place  
in our school, contact the Office  
of Admission at 410.413.2308.**

**Open House**  
Sunday, Nov. 6 / 2 pm

# For life.



PreSchool through Grade 12  
**Beth Tfiloh** Dahan Community School  
3300 Old Court Road, Baltimore, MD 21208  
**bethtfiloh.com/410.486.1905**

## Reflections from Michael Lemon's Valedictorian Speech – June 4, 2011



Calvert Hall exposed me to a community where  
faith was not only present, it flourished.

We all can identify a teacher, coach or  
administrator that pushed us harder, inspired  
us, and made us stronger than we could ever  
dream of becoming.

I chose to go to Calvert Hall because that's  
where I could be myself. Not entitled and not  
just another face in the crowd, but a man of  
faith, intellect, and integrity.

**These experiences and others  
await you Calvert Hall!**

## OPEN HOUSE

Sunday, November 6 • 12 noon – 4 p.m.

## CALVERT HALL COLLEGE HIGH SCHOOL

8102 La Salle Road  
Towson, MD 21286  
410-825-4266  
www.calverthall.com



# Schools

Continued from page 21

## Washington Episcopal School

5600 Little Falls Pkwy.  
Bethesda, MD 20816  
(301) 652-7878  
www.w-e-s.org  
Grades: Preschool-8  
Tuition: \$13,885-\$27,725  
Contact: Debra Duff

## Washington Hebrew Congregation Early Childhood Center & Primary School

11810 Falls Road  
Potomac, MD 20854  
(301) 279-7505  
www.whcecc.org  
Grades: Toddlers-kindergarten  
Tuition: \$2,225-\$14,625  
Contact: Phyllis Shankman

## Washington-McLaughlin Christian School

6501 Poplar Ave.  
Takoma Park, MD 20912  
(301) 270-2760  
www.wmcsschool.com  
Grades: Pre-K-8  
Contact: Pauline Washington

## Washington Waldorf School

4800 Sangamore Road  
Bethesda, MD 20816  
(301) 229-6107  
www.washingtonwaldorf.org  
Grades: Pre-K-12  
Tuition: \$4,800-\$21,750  
Contact: Lezlie Lawson

## The Winchester School

3223 Bel Pre Road  
Silver Spring, MD 20906  
(301) 598-2266  
www.thewinchesterschool.org  
Grades: Pre-K-2  
Tuition: \$900-\$1,025/month

## Woodmont Academy

2000 Woodmont Drive  
Cooksville, MD 21723  
(443) 574-8100  
www.woodmontacademy.org  
Grades: Pre-K-8  
Tuition: \$4,220-\$7,950  
Contact: Stephanie Blake

## The Woods Academy

6801 Greentree Road  
Bethesda, MD 20817  
(301) 365-3080  
www.woodsacademy.org  
Grades: Pre-K-8  
Tuition: \$11,500-\$18,790  
Contact: Jodie Shoemaker

## Yeshiva of Greater Washington Boys Division

1216 Arcola Ave.  
Silver Spring, MD 20902  
(301) 649-7077  
www.yeshiva.edu  
Grades: 7-12  
Tuition: \$15,225-\$17,500  
Contact: Rabbi Dovid Niman

## Yeshiva of Greater Washington Girls Division

2010 Linden Lane  
Silver Spring, MD 20910  
(301) 962-5111  
www.yeshiva.edu  
Grades: 7-12

Tuition: \$15,225-\$17,500  
Contact: Rabbi Zev Katz

# Prince George’s County

## Beddow Jr./Sr. High School

501 Bryan Point Road  
Accokeek, MD 20607  
(301) 292-1968  
www.thebeddowschool.org  
Grades: 7-12  
Tuition: \$11,500

## The Beddow School

8600 Loughran Road  
Fort Washington, MD 20744  
(301) 567-0330  
www.thebeddowschool.org  
Ages: Preschool-6  
Tuition: \$6,080-\$8,672

## Bishop McNamara High School

6800 Marlboro Pike  
Forestville, MD 20747  
(301) 735-8401  
www.bmhs.org  
Grades: 9-12  
Tuition: \$10,600  
Enrollment: 875  
Contact: Patricia Garber

## Bowie Christian School

2518 Kenhill Drive  
Bowie, MD 20715  
(301) 352-7106  
www.bowiechristianschool.com  
Grades: Preschool-12  
Tuition: \$6,750  
Contact: Beth Wilson

## Bowie Montessori Children’s House

5004 Randonstone Lane  
Bowie, MD 20715  
(301) 262-3566  
www.bmch.net  
Grades: Preschool-8  
Tuition: \$9,700  
Contact: Tina Arminio

## Cornerstone Christian Academy

16010B Annapolis Road  
Bowie, MD 20715  
(301) 262-7683  
http://ccabowie.org  
Grades: Pre-K-8  
Tuition: \$5,700  
Contact: Millie Lauffer

## DeMatha Catholic High School

4313 Madison St.  
Hyattsville, MD 20781  
(240) 764-2200  
www.dematha.org  
Grades: 9-12, boys only  
Enrollment: 950  
Tuition: \$13,200  
Contact: Patrick Smith

## Elizabeth Seton High School

5715 Emerson St.  
Bladensburg, MD 20710  
(301) 864-4532  
www.setonhs.org  
Grades: 9-12, girls only  
Tuition: \$10,950  
Contact: Melissa Davey

## First Baptist School of Laurel

15002 First Baptist Lane  
Laurel, MD 20707  
(301) 490-1076  
www.fbslaurel.com  
Grades: Preschool-8

Tuition: \$4,800-\$6,000  
Contact: Tom Hudson

## Friends Community School

5901 Westchester Park Drive  
College Park, MD 20740  
(301) 441-2100  
www.friendscommunityschool.org  
Grades: K-8  
Tuition: \$15,310-\$17,590  
Contact: Connie Belfiore

## Genesis Christian Day Schools

(multiple area locations)  
6717 Glenn Dale Road  
Glenn Dale, MD 20769  
(301) 464-3981  
www.genesislearningcenters.com  
Grades: Preschool-3  
Tuition: \$5,040-\$11,550

## Glenn Dale Montessori School

7500 Hillmeade Road  
Glenn Dale, MD 20769  
(301)805-2845

## Grace Brethren Christian School

6501 Surratts Road  
Clinton, MD 20735  
(301) 868-1600  
www.gbcseagles.org  
Grades: K(3)-12  
Tuition: \$7,495-\$7,995  
Contact: George Hornickel

## Henson Valley Montessori School

13400 Edgemeade Road  
Upper Marlboro, MD 20772  
(301) 449-4442  
www.hvms.org  
Ages: 2½ to 15 years old  
Enrollment: 250  
Contact: Jennifer Beall

## Holy Trinity Episcopal Day School

Lower School  
13106 Annapolis Road  
Bowie, MD 20720  
(301) 262-5355  
www.htrinity.org  
Grades: K-4  
Tuition: \$9,305  
Contact: Rosalyn Cruz-Williams

## Holy Trinity Episcopal Day School

Preschool & Middle School  
11902 Daisy Lane  
Glenn Dale, MD 20769  
(301) 464-3215  
www.htrinity.org  
Grades: Preschool; 5-8  
Tuition: \$8,670-\$11,035  
Contact: Rosalyn Cruz-Williams

## Jericho Christian Academy

8500 Jericho City Drive  
Landover, MD 20785  
(301) 333-9400  
www.jerichocop.org/academy.htm  
Grades: Preschool-5  
Tuition: \$6,700

## Mitchellville Montessori School

12112 Central Ave.  
Mitchellville, MD 20762  
(301) 249-9187  
www.mmontessorisch.com  
Grades: Preschool-4  
Tuition: \$6,000-\$8,900  
Contact: Gloria Panton-Harvey

## The Mitchellville School of Mathematics, Science & Technology

3501 Moylan Drive

Bowie, MD 20715  
(301) 249-0203  
www.themitchellvilleschool.org  
Grades: Pre-K-6  
Tuition: \$11,500  
Contact: Sherrell James

## New Chapel Christian Academy

5601 Old Branch Ave.  
Camp Springs, MD 20748  
(301) 899-0877  
Grades: Pre-K-4  
Contact: Donna Hill

## New Hope Academy

7009 Varnum St.  
Landover Hills, MD 20784  
(301) 459-7311  
www.newhopeacademy.org  
Grades: Preschool-12  
Tuition: \$6,575-\$9,310  
Contact: Joy Morrow

## New Horizon Child Development Center

5664 Silver Hill Road  
Forestville, MD 20747  
(301) 420-5900  
2200 Old Washington Road  
Waldorf, MD 20601  
(301) 843-9632  
www.newhorizonchildcare.org  
Grades: K-2

## Our Savior’s School

3111 Forestville Road  
Forestville, MD 20747  
(301) 420-5076  
www.ossforestville.org  
Grades: Pre-K-6  
Tuition: \$6,100-\$6,400  
Contact: Elizabeth Cottrell

## Patuxent Montessori School

14210 Old Stage Road  
Bowie, MD 20720  
(301) 464-4506  
www.patuxent-montessori.org  
Grades: Preschool-6  
Tuition: \$7,600-\$9,300  
Contact: Suzanne Damadio

## Phillips School

(for students with a range of disabilities)  
8920 Whiskey Bottom Road  
Laurel, MD 20723  
(301) 470-1620  
www.phillipsprograms.org  
Contact: Don Downing

## Reid Temple Christian Academy

11400 Glenn Dale Blvd.  
Glenn Dale, MD 20769  
(301) 860-6570  
www.reidtempleacademy.com  
Tuition: \$7,350  
Grades: K-6

## Riverdale Baptist School

1133 Largo Road  
Upper Marlboro, MD 20774  
(301) 249-7000  
www.rbschool.org  
Grades: K-12  
Enrollment: 900  
Tuition: \$8,340-\$10,356

## St. John the Evangelist School

8912 Old Branch Ave.  
Clinton, MD 20735  
(301) 868-2010  
www.saintjohnsschool.org  
Grades: Pre-K-8  
Enrollment: 234





BRYN MAWR



BRYN MAWR

Tuition: \$5,995-\$9,185  
Contact: Susan Scott

**St. Mary of the Mills School**

106 St. Mary's Place  
Laurel, MD 20707  
(301) 498-1433  
www.stmaryofthemills.org  
Grades: K-8  
Tuition: \$5,750-\$7,830  
Contact: Maggie Hubbard

**St. Vincent Pallotti High School**

113 St. Mary's Place  
Laurel, MD 20707  
(301) 725-3228  
www.pallottihs.org  
Grades: 9-12  
Enrollment: 510  
Tuition: \$12,585  
Contact: Kelly Hawse

**Queen Anne's County**

**The Gunston School**

911 Gunston Road  
Centreville, MD 21617  
(410) 758-0620  
www.gunston.org  
Grades: 9-12  
Tuition: \$21,730  
Contact: David Henry

**Wye River Upper School**

(for ADHD, dyslexia and other learning differences)  
P.O. Box 36  
Wye Mills, MD 21679  
(410) 793-4662  
www.wyeriverupperschool.org  
Grades: 9-12  
Contact: Katie Theeke

**St. Mary's County**

**The King's Christian Academy**

20738 Point Lookout Road  
Callaway, MD 20620  
(301) 994-3080

www.kcademy.net  
Grades: Pre-K-12  
Tuition: \$6,521-7,701  
Contact: Betsy Barreto

**Leonard Hall Junior Naval Academy**

41740 Baldrige St.  
Leonardtown, MD 20650  
(301) 475-8029  
www.lhjna.com  
Grades: 6-12  
Tuition: \$7,650  
Contact: Suzanne Wisnieski

**St. Mary's Ryken High School**

22600 Camp Calvert Road  
Leonardtown, MD 20650  
(301) 475-2814  
www.smrhs.org  
Grades: 9-12  
Tuition: \$10,700  
Contact: Bob Harmon

**Starmaker Learning Center**

23443 Cottonwood Parkway  
California, MD 20619  
(301) 863-7740  
www.starmakerschool.org  
Grades: Preschool-3  
Contact: Lynn Ennis

**Talbot County**

**The Country School**

716 Goldsborough St.  
Easton, MD 21601  
(410) 822-1935  
www.countryschool.org  
Grades: K-8  
Tuition: \$9,750-\$13,250  
Contact: Kimerly Balderson

**Sts. Peter and Paul Schools**

900 High St.  
Easton, MD 21601  
(410) 822-2275  
www.sspeaston.org/schools  
Grades: Pre-K-12  
Tuition: \$4,575-\$10,600  
Contact: Connie Webster, elementary;  
James Nemeth, high school

**Washington County**

**Grace Academy**

13321 Cearfoss Pike  
Hagerstown, MD 21740  
(301) 733-2033  
www.graceacademyonline.org  
Grades: Pre-K-12  
Tuition: \$4,092-\$5,100  
Contact: Jack Appleby

**Heritage Academy**

12215 Walnut Pt. West  
Hagerstown, MD 21740  
(301) 582-2600  
www.heritage-academy.net  
Grades: K(4)-12  
Tuition: \$4,215-\$4,549  
Contact: Linda Richesson

**Highland View Academy**

10100 Academy Drive  
Hagerstown, MD 21740  
(301) 739-8480  
www.highlandviewacademy.com  
Grades: 9-12  
Tuition: \$9,155-\$14,415  
Contact: Kim Brown

**St. James School**

17641 College Road  
St. James, MD 21740  
(301) 733-9330  
www.stjames.edu  
Grades: 8-12  
Enrollment: 220  
Tuition: \$25,200, day;  
\$37,800, boarding  
Contact: Drew Lineberger

**St. Maria Goretti High School**

1535 Oak Hill Ave.  
Hagerstown, MD 21742  
(301) 739-4266  
www.goretti.org  
Grades: 9-12  
Tuition: \$10,750-\$12,250  
Contact: Holly Katrina

**St. Mary Catholic School**

218 W. Washington St.  
Hagerstown, MD 21740  
(301) 733-1184  
www.st.marycatholicsschool.org  
Grades: Pre-K-8  
Tuition: \$4,200-\$6,000  
Contact: Patricia McDermott

**Wicomico County**

**Salisbury Christian School**

807 Parker Road  
Salisbury, MD 21804  
(410) 546-0661  
www.salisburychristian.org  
Grades: Pre-K-12  
Tuition: \$2,623-\$5,994  
Contact: James T. Fox Jr.

**The Salisbury School**

6279 Hobbs Drive  
Salisbury, MD 21804  
(410) 742-4464  
www.thesalisburyschool.org  
Grades: Preschool-12  
Contact: Gail Carozza

**Stepping Stones Learning Academy**

402 W. Main St.  
Fruitland, Md. 21826  
(410) 341-7668  
www.steppingstoneslearningacademy.net  
Grades: K-9  
Tuition: \$95-\$120/week  
Contact: Linda Brannock

**Wicomico Day School**

1315 Old Ocean City Road  
Salisbury, MD 21804  
(410) 546-5451  
www.wicomicodayschool.com  
Grades: Preschool-8  
Tuition: \$140-\$195/week  
Contact: Sheila Zimmer

**Worcester County**

**Worcester Preparatory School**

508 S. Main St.  
Berlin, MD 21811  
(410) 641-3575  
www.worcesterprep.org  
Grades: Preschool-12  
Tuition: \$7,960-\$11,490  
Contact: Tara Becker





**Filter the noise.**

**THE DAILY RECORD**

***Essential knowledge* for more than 120 years.**

**TheDailyRecord.com**

**Subscribe to The Daily Record Online  
at the rate of \$66.**

*Enter promo code: IOZFTN2*